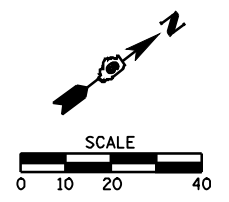


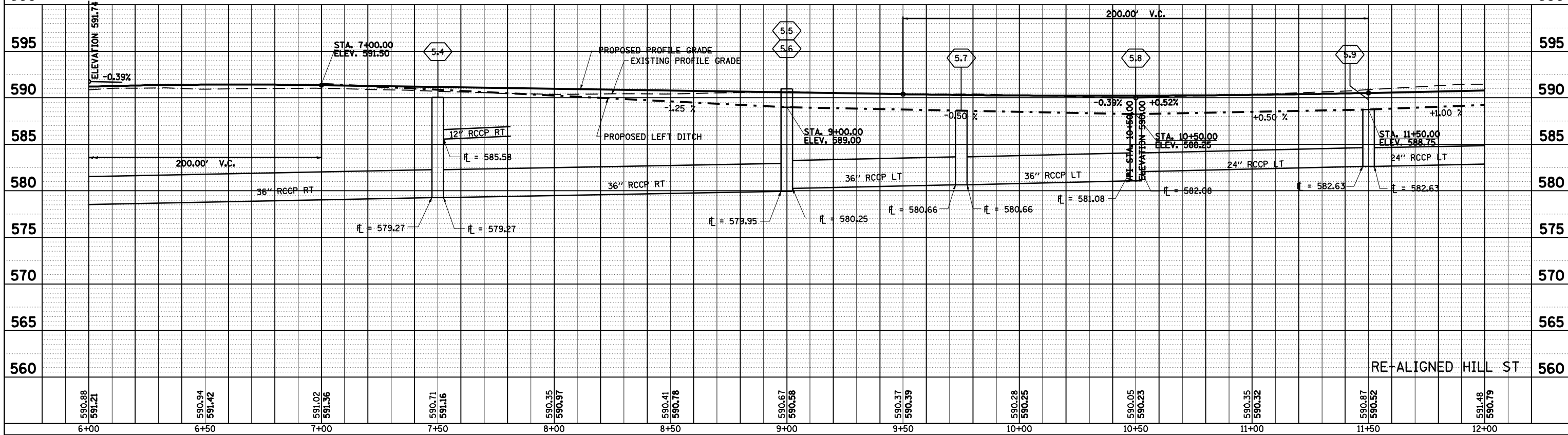
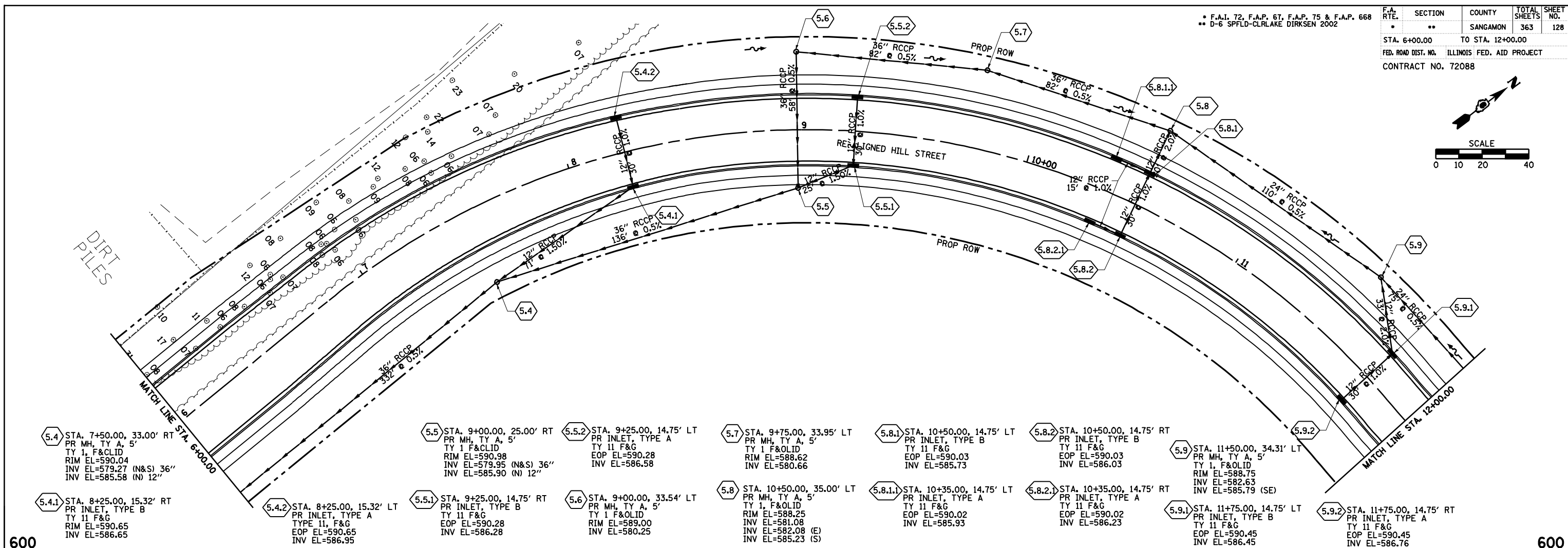
F.A.I. 72, F.A.P. 67, F.A.P. 75 & F.A.P. 668
 ** D-6 SPFLD-CLRLAKE DIRKSEN 2002

F.A. RTE.	SECTION	COUNTY	TOTAL SHEETS	SHEET NO.
•	••	SANGAMON	363	128
STA. 6+00.00		TO STA. 12+00.00		
FED. ROAD DIST. NO.		ILLINOIS FED. AID PROJECT		
CONTRACT NO. 72088				



PLAN	SURVEYED	DATE
	PLOTTED	
	CHECKED	
	BY	
	NO. OF WAY CHECKED	
	CADD FILE NAME	
	NO.	

PROFILE	SURVEYED	DATE
	PLOTTED	
	CHECKED	
	BY	
	NO. OF WAY CHECKED	
	STRUCTURE NOTATIONS CHKD	



- 5.4 STA. 7+50.00, 33.00' RT
PR MH, TY A, 5'
TY 1, F&CLID
RIM EL=590.04
INV EL=579.27 (N&S) 36"
INV EL=585.58 (N) 12"
- 5.4.1 STA. 8+25.00, 15.32' RT
PR INLET, TYPE B
TY 11 F&G
RIM EL=590.65
INV EL=586.65
- 5.4.2 STA. 8+25.00, 15.32' LT
PR INLET, TYPE A
TYPE 11, F&G
EOP EL=590.65
INV EL=586.95
- 5.5 STA. 9+00.00, 25.00' RT
PR MH, TY A, 5'
TY 1 F&CLID
RIM EL=590.98
INV EL=579.95 (N&S) 36"
INV EL=585.90 (N) 12"
- 5.5.1 STA. 9+25.00, 14.75' RT
PR INLET, TYPE B
TY 11 F&G
EOP EL=590.28
INV EL=586.28
- 5.5.2 STA. 9+25.00, 14.75' LT
PR INLET, TYPE A
TY 11 F&G
EOP EL=590.28
INV EL=586.58
- 5.6 STA. 9+00.00, 33.54' LT
PR MH, TY A, 5'
TY 1 F&OLID
RIM EL=589.00
INV EL=580.25
- 5.7 STA. 9+75.00, 33.95' LT
PR MH, TY A, 5'
TY 1 F&OLID
RIM EL=588.62
INV EL=580.66
- 5.8 STA. 10+50.00, 35.00' LT
PR MH, TY A, 5'
TY 1, F&OLID
RIM EL=588.25
INV EL=581.08
INV EL=582.08 (E)
INV EL=585.23 (S)
- 5.8.1 STA. 10+50.00, 14.75' LT
PR INLET, TYPE B
TY 11 F&G
EOP EL=590.03
INV EL=585.73
- 5.8.1.1 STA. 10+35.00, 14.75' LT
PR INLET, TYPE A
TY 11 F&G
EOP EL=590.02
INV EL=585.93
- 5.8.2 STA. 10+50.00, 14.75' RT
PR INLET, TYPE B
TY 11 F&G
EOP EL=590.03
INV EL=586.03
- 5.8.2.1 STA. 10+35.00, 14.75' RT
PR INLET, TYPE A
TY 11 F&G
EOP EL=590.02
INV EL=586.23
- 5.9 STA. 11+50.00, 34.31' LT
PR MH, TY A, 5'
TY 1, F&OLID
RIM EL=588.75
INV EL=582.63
INV EL=585.79 (SE)
- 5.9.1 STA. 11+75.00, 14.75' LT
PR INLET, TYPE B
TY 11 F&G
EOP EL=590.45
INV EL=586.45
- 5.9.2 STA. 11+75.00, 14.75' RT
PR INLET, TYPE A
TY 11 F&G
EOP EL=590.45
INV EL=586.76