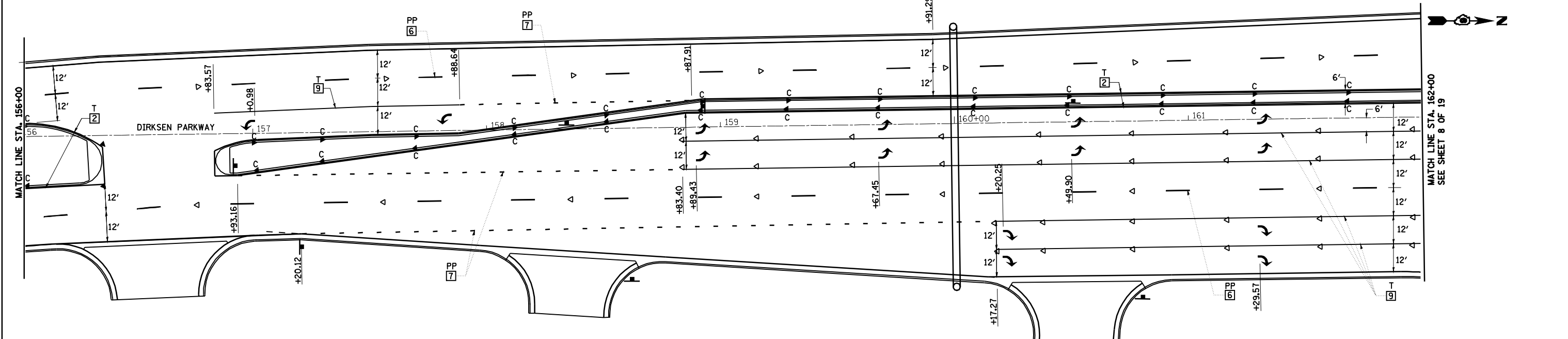
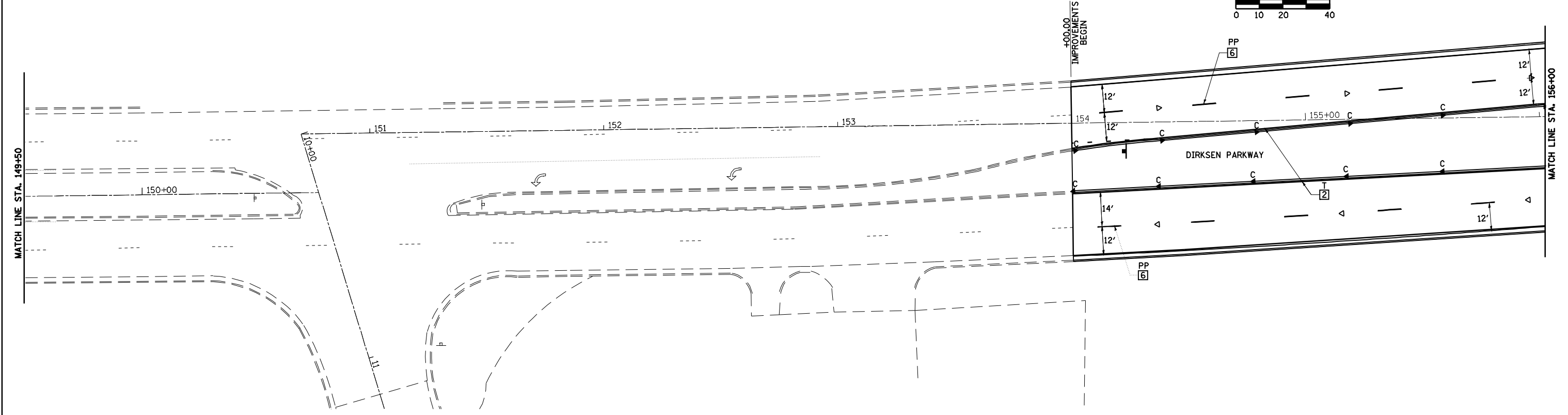
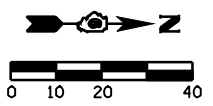


• F.A.P. 72, F.A.P. 67, F.A.P. 75 & F.A.P. 668
 ** D-6 SPFLD-CLRLAKE DIRKSEN 2002

F.A.P. RTE.	SECTION	COUNTY	TOTAL SHEETS	SHEET NO.
•	••	SANGAMON	363	154
STA. 149+00.00		TO STA. 162+00.00		
FED. ROAD DIST. NO.	ILLINOIS	FED. AID PROJECT		
CONTRACT NO. 72088				

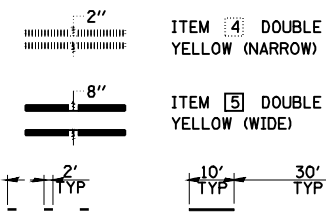


TYPICAL PAVEMENT MARKING LEGEND

- | | | |
|---------------------------|-----------------------|--------------------------------|
| 1 5" SKIP-DASH YELLOW | 7 6" SKIP-DASH WHITE | U - URETHANE |
| 2 5" SOLID YELLOW | 8 5" SOLID WHITE | PP - PREFORMED PLASTIC, TYPE B |
| 3 12" DIAGONAL YELLOW | 9 6" SOLID WHITE | T - THERMOPLASTIC |
| 4 5" DOUBLE YELLOW NARROW | 10 8" SOLID WHITE | P - PAINT |
| 5 5" DOUBLE YELLOW WIDE | 11 24" STOP BAR WHITE | ALL TRAFFIC ARROWS ARE "PP" |
| 6 5" SKIP-DASH WHITE | 12 12" DIAGONAL WHITE | |

LEGEND

- | | | | |
|--|--|--|--|
| | RAISED REFL PAVT MKR AMBER BIDIRECTIONAL | | PRISMATIC CURB REFLECTOR AMBER BIDIRECTIONAL |
| | RAISED REFL PAVT MKR AMBER MONODIRECTIONAL | | PRISMATIC CURB REFLECTOR AMBER MONODIRECTIONAL |
| | RAISED REFL PAVT MKR CRYSTAL MONODIRECTIONAL | | PRISMATIC CURB REFLECTOR CRYSTAL MONODIRECTIONAL |
| | EXISTING PAVEMENT MARKING | | |



SEE STANDARDS 780001 & 781001 AND DISTRICT PAVEMENT MARKING DETAILS FOR ADDITIONAL DETAILS FOR PAVEMENT MARKING AND RAISED REFLECTIVE PAVEMENT MARKERS.

REVISIONS	
NAME	DATE

ILLINOIS DEPARTMENT OF TRANSPORTATION

**PAVEMENT MARKING PLAN
DIRKSEN PARKWAY**

SCALE: VERT. 1"=10'
HORIZ. 1"=40'
DATE 08/05

DRAWN BY MLO
CHECKED BY SJK