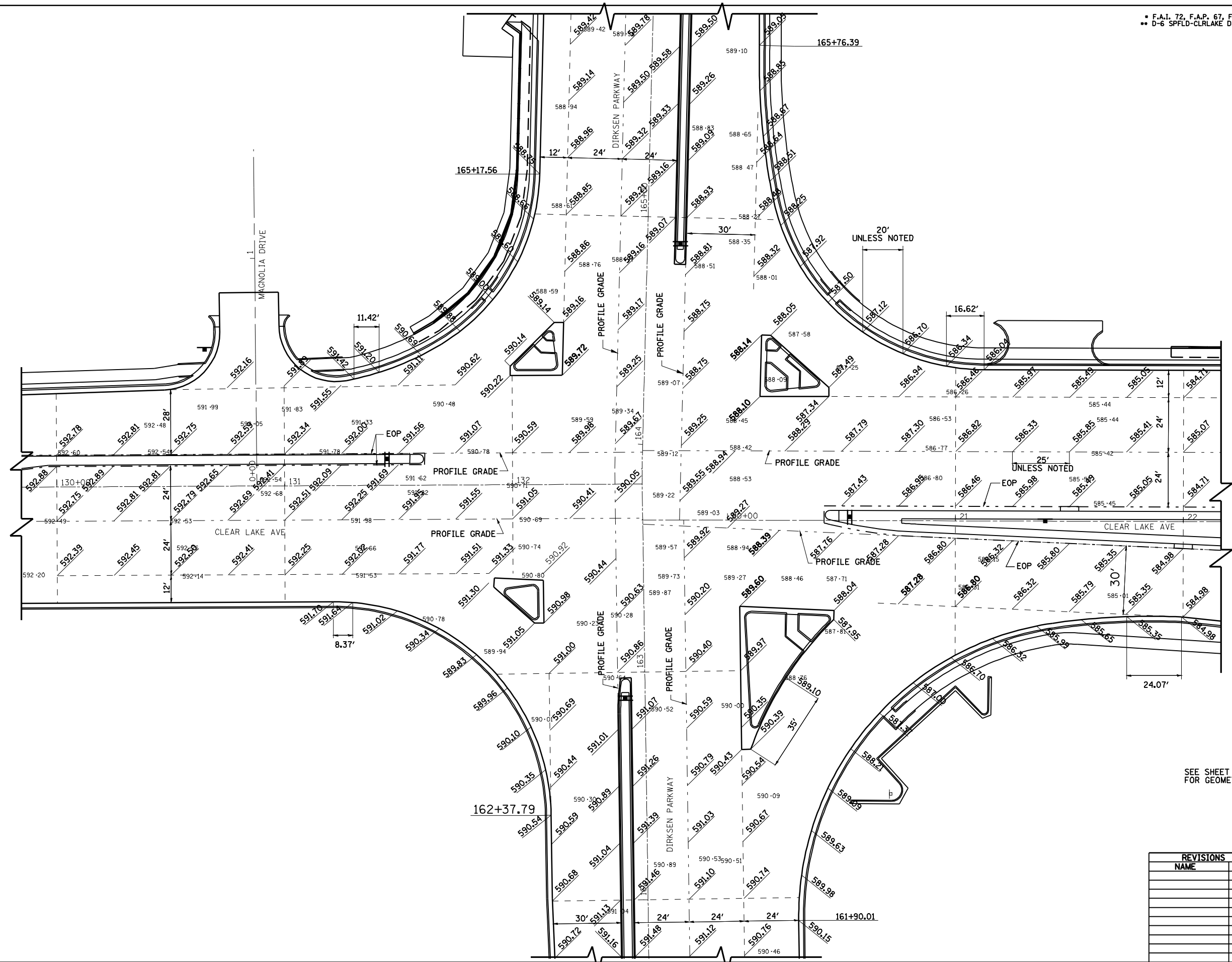
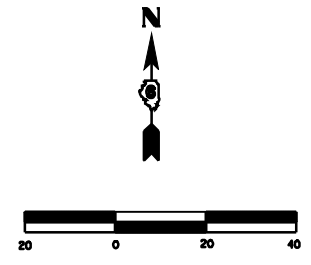


F.A.I. 72, F.A.P. 67, F.A.P. 75 & F.A.P. 668  
 \*\* D-6 SPFLD-CLRLAKE DIRKSEN 2002

F.A.P. RTE.	SECTION	COUNTY	TOTAL SHEETS	SHEET NO.
*	**	SANGAMON	363	168
STA.		TO STA.		
FED. ROAD DIST. NO.	ILLINOIS	FED. AID PROJECT		
CONTRACT NO. 72088				



**LEGEND**

- XXX.XX PROPOSED FINISHED ELEVATION
- XXX.XX EXISTING SURFACE ELEVATION

SEE SHEET 1 OF 9 FOR GEOMETRY.

**SHEET 2 OF 9**

REVISIONS	
NAME	DATE

ILLINOIS DEPARTMENT OF TRANSPORTATION

**INTERSECTION GEOMETRICS**

SCALE: 1"=30'  
 DATE 7/13/05

DRAWN BY NJV  
 CHECKED BY RMD