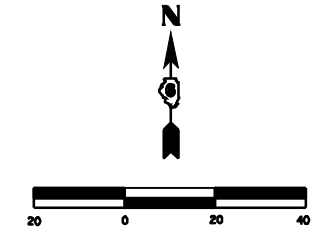
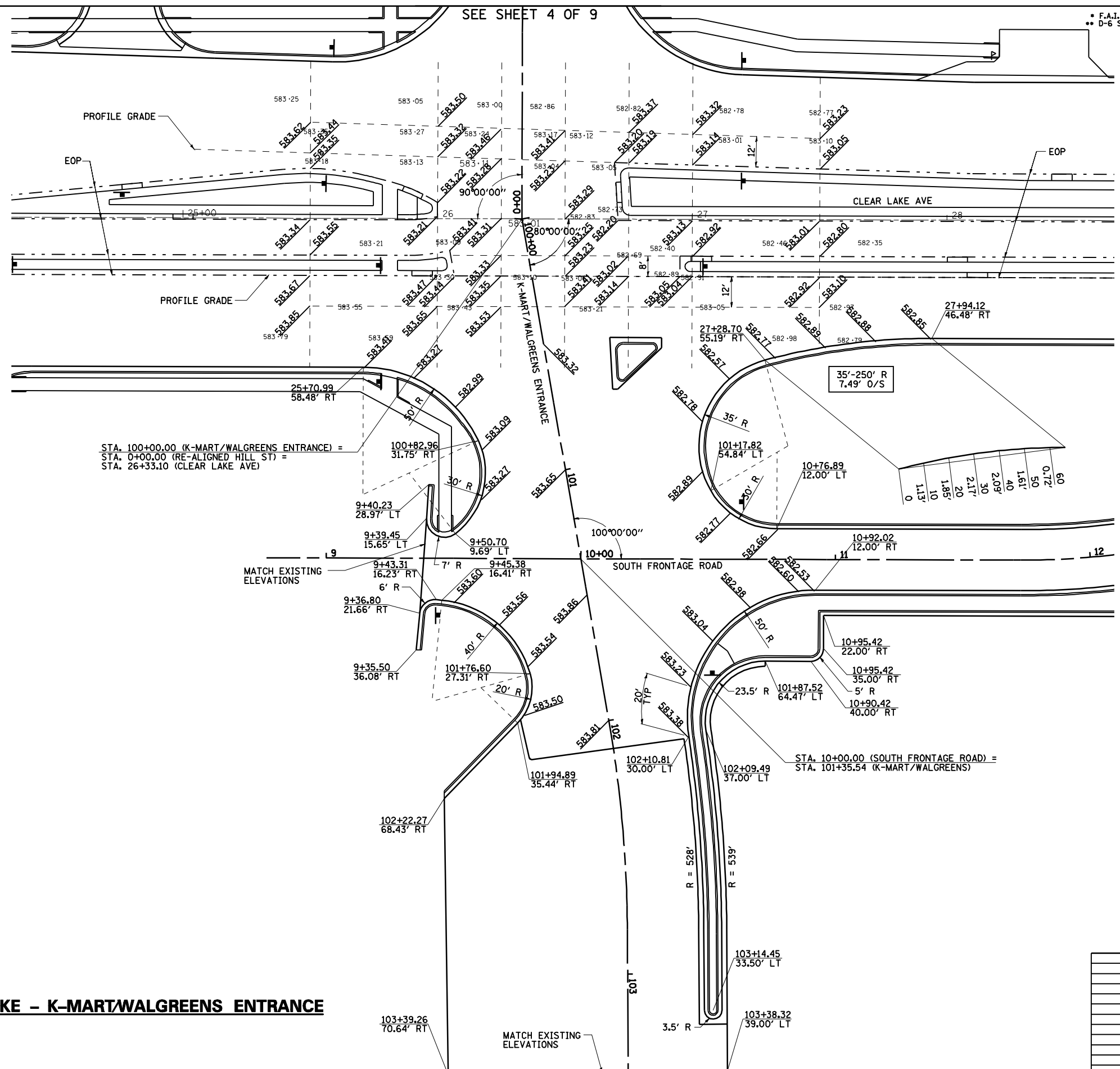
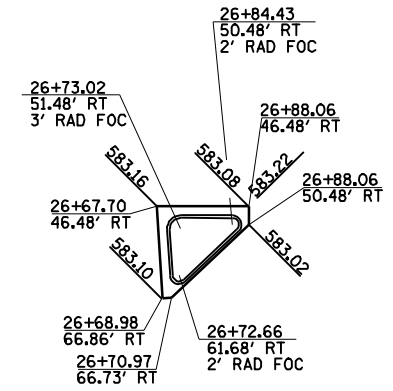


F.A.P. RTE.	SECTION	COUNTY	TOTAL SHEETS	SHEET NO.
*	**	SANGAMON	363	169
STA.		TO STA.		
FED. ROAD DIST. NO.	ILLINOIS	FED. AID PROJECT		
CONTRACT NO. 72088				



LEGEND

- XXX.XX PROPOSED FINISHED ELEVATION
- xxx.xx EXISTING SURFACE ELEVATION



ISLANDS PER STD 606301

CLEAR LAKE - K-MART/WALGREENS ENTRANCE

REVISIONS	
NAME	DATE

ILLINOIS DEPARTMENT OF TRANSPORTATION
INTERSECTION GEOMETRICS
 SCALE: 1"=20'
 DATE 7/13/05
 DRAWN BY NJV
 CHECKED BY PBB