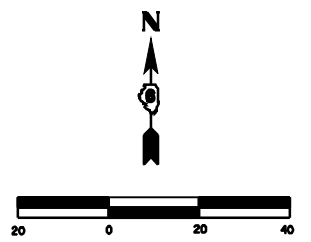
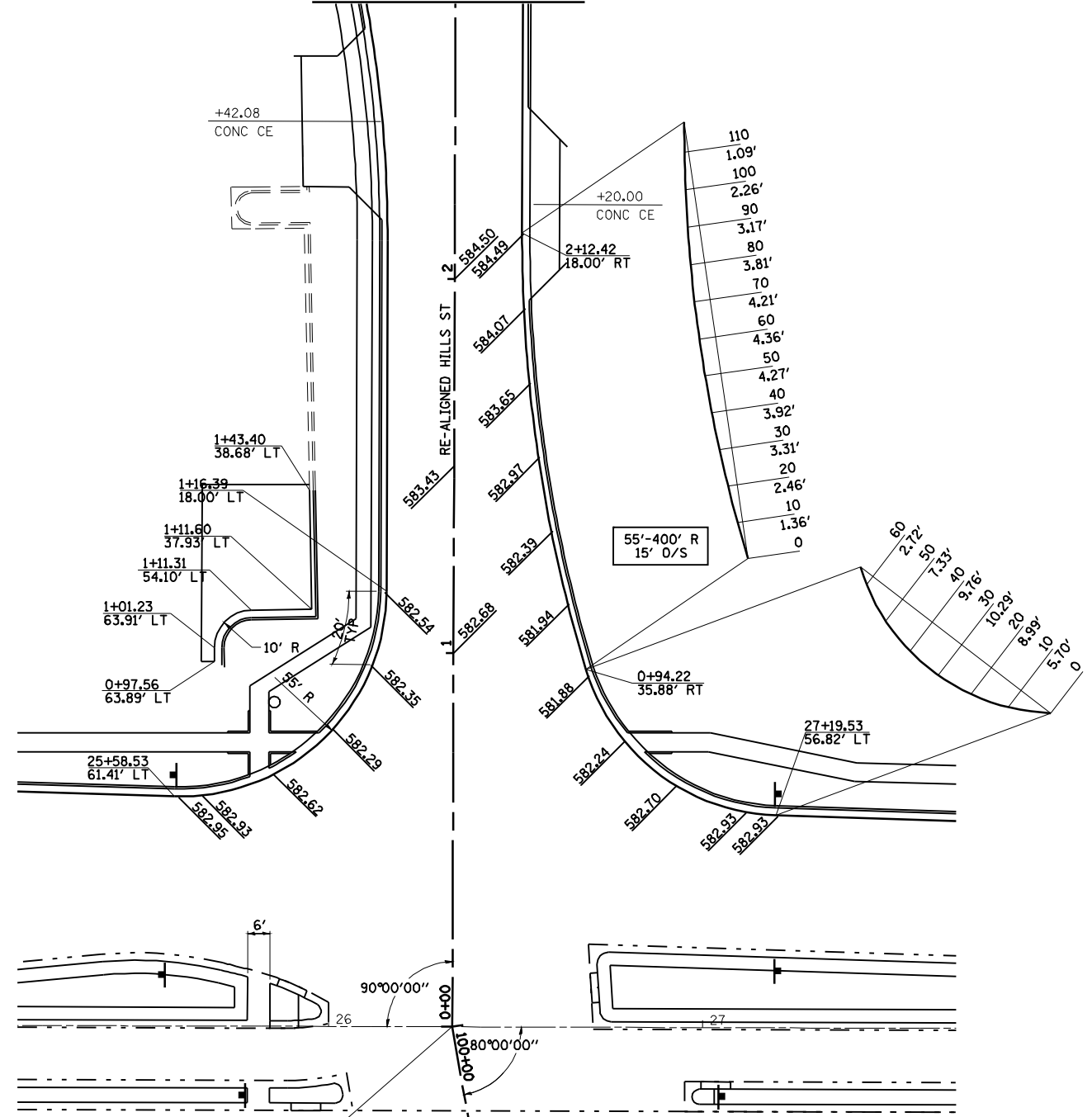


• F.A.I. 72, F.A.P. 67, F.A.P. 75 & F.A.P. 668  
 •• D-6 SPFLD-CLRLAKE DIRKSEN 2002

|                     |          |                  |              |           |
|---------------------|----------|------------------|--------------|-----------|
| F.A.P. RTE.         | SECTION  | COUNTY           | TOTAL SHEETS | SHEET NO. |
| •                   | ••       | SANGAMON         | 363          | 170       |
| STA.                |          | TO STA.          |              |           |
| FED. ROAD DIST. NO. | ILLINOIS | FED. AID PROJECT |              |           |
| CONTRACT NO. 72088  |          |                  |              |           |



SEE SHEET 8 OF 9



SEE SHEET 3 OF 9

STA. 100+00.00 (K-MART/WALGREENS ENTRANCE) =  
 STA. 0+00.00 (RE-ALIGNED HILL ST) =  
 STA. 26+33.10 (CLEAR LAKE AVE)

**CLEAR LAKE - RE-ALIGNED HILL ST**

**LEGEND**

*xxx.xx* PROPOSED FINISHED ELEVATION

**SHEET 4 OF 9**

| REVISIONS |      |
|-----------|------|
| NAME      | DATE |
|           |      |
|           |      |
|           |      |
|           |      |
|           |      |
|           |      |
|           |      |
|           |      |
|           |      |
|           |      |

ILLINOIS DEPARTMENT OF TRANSPORTATION

**INTERSECTION GEOMETRICS**

SCALE: 1"=20'  
 DATE 7/13/05

DRAWN BY NJV  
 CHECKED BY RMD