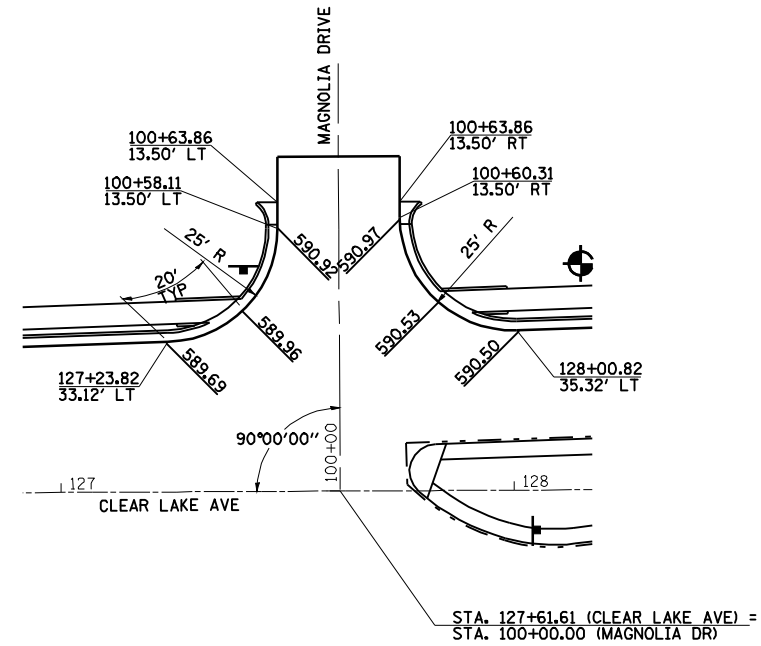
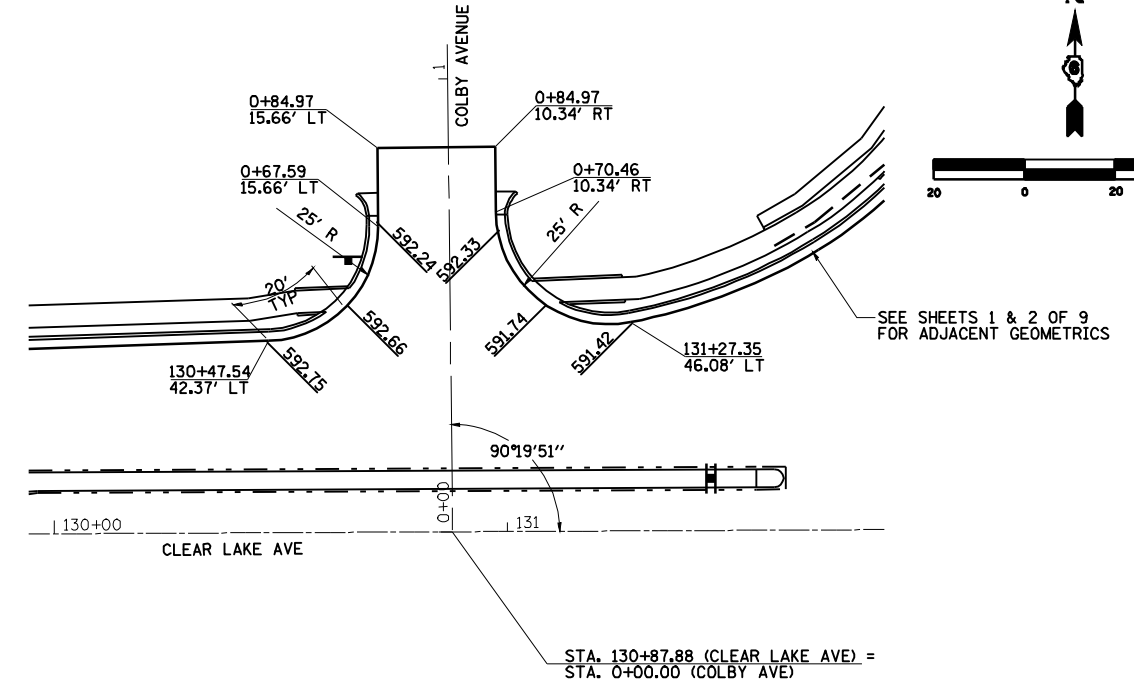


F.A.P. 72, F.A.P. 67, F.A.P. 75 & F.A.P. 668
 D-6 SPFLD-CLRLAKE DIRKSEN 2002

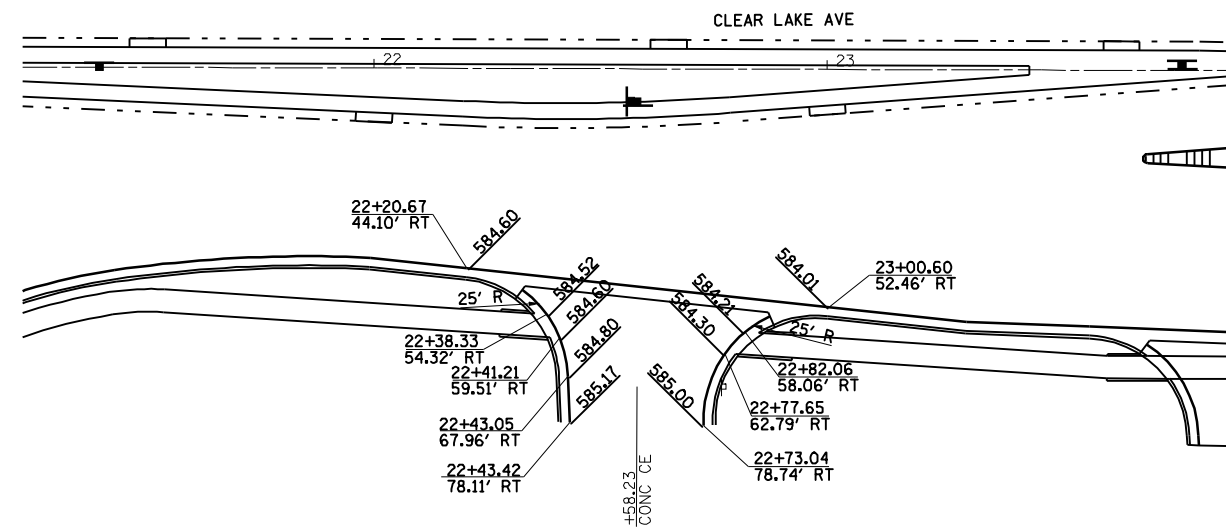
F.A.P. RTE.	SECTION	COUNTY	TOTAL SHEETS	SHEET NO.
*	**	SANGAMON	363	171
STA. TO STA.		ILLINOIS FED. AID PROJECT		
FED. ROAD DIST. NO.		CONTRACT NO. 72088		



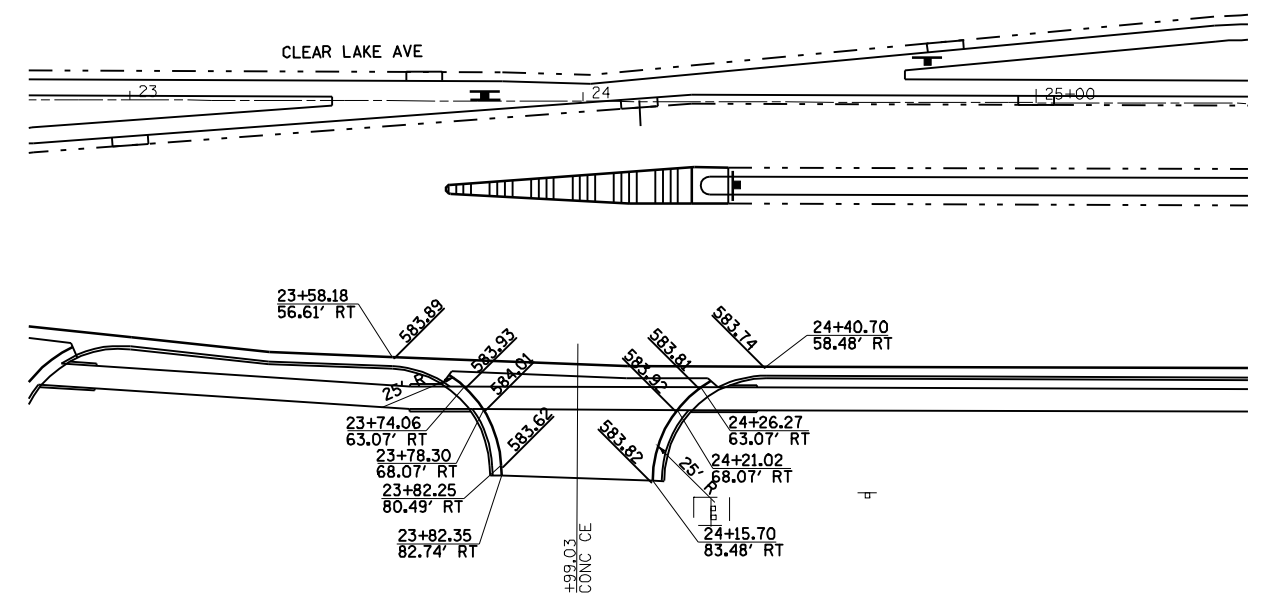
CLEAR LAKE - MAGNOLIA DR



CLEAR LAKE - COLBY AVE



CLEAR LAKE - MCDONALD'S ENTRANCE



CLEAR LAKE - MCDONALD'S / WALGREENS ENTRANCE

LEGEND

XXXXX PROPOSED FINISHED ELEVATION

REVISIONS	
NAME	DATE

ILLINOIS DEPARTMENT OF TRANSPORTATION

INTERSECTION GEOMETRICS

SCALE: 1"=20'
 DATE 7/13/05

DRAWN BY NJV
 CHECKED BY RMD