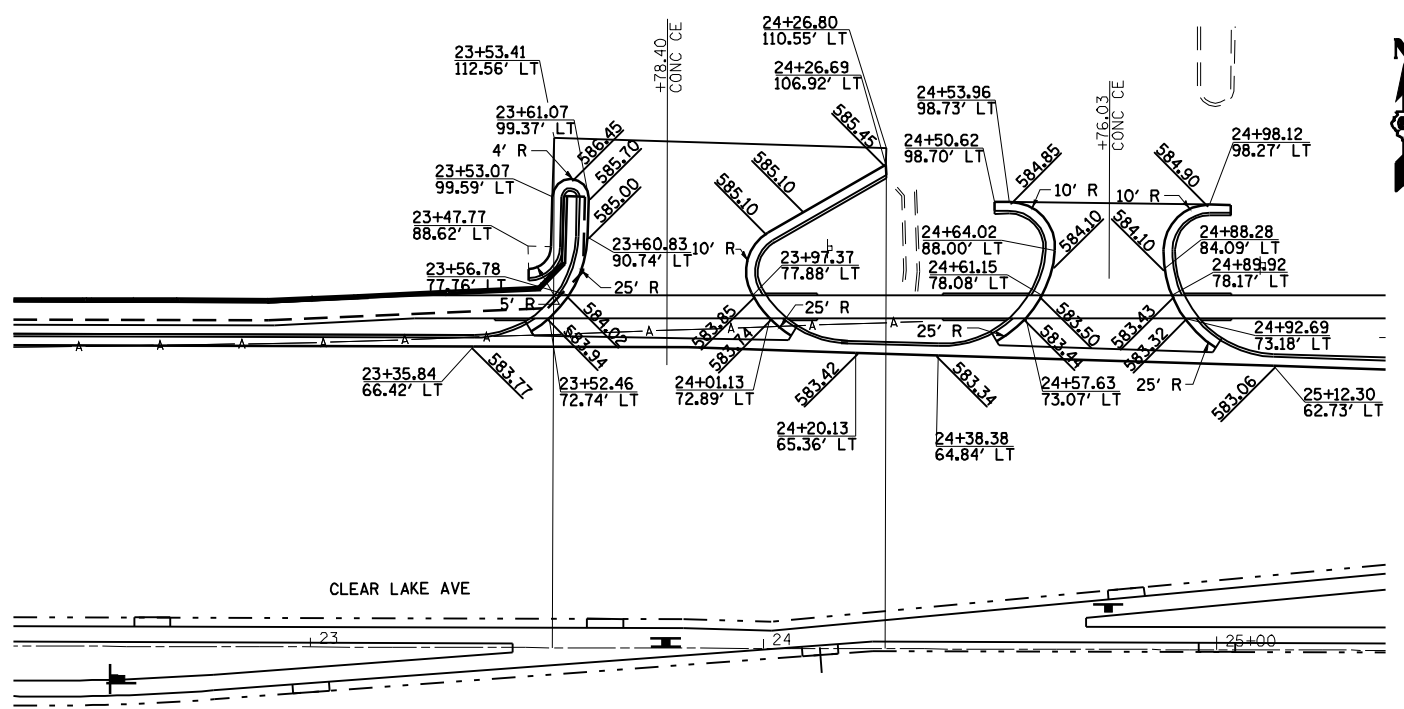
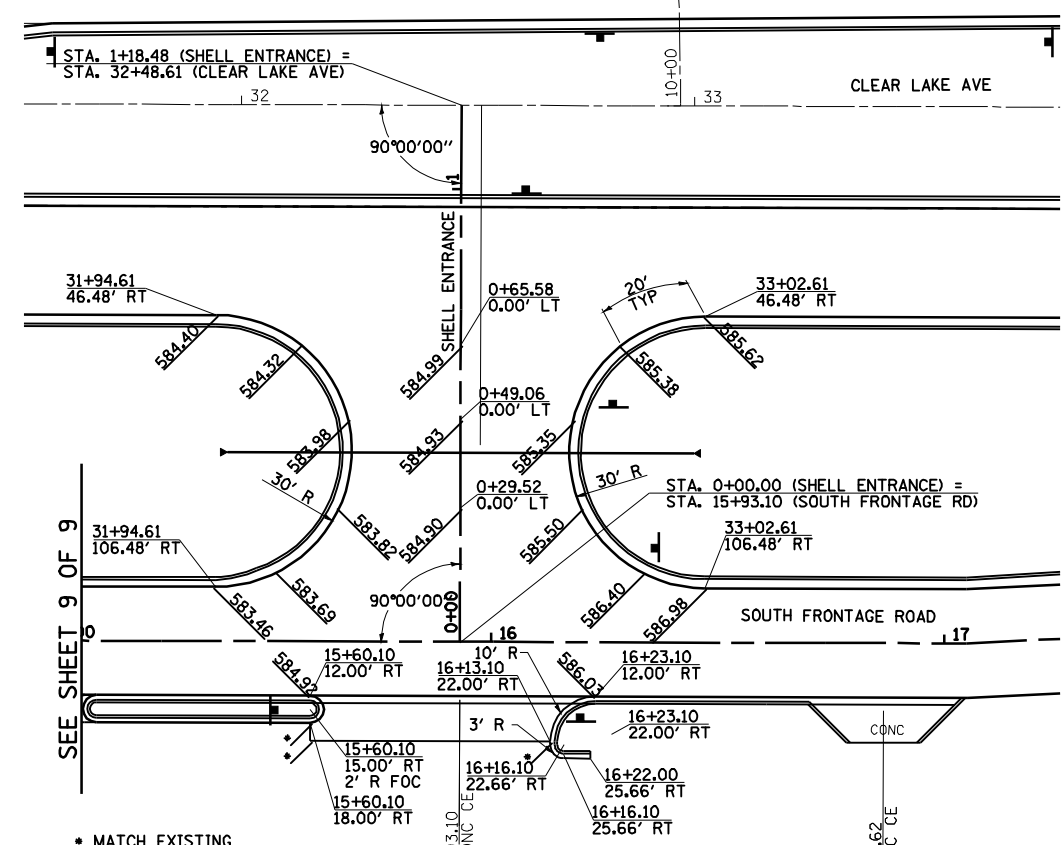


• F.A.P. 72, F.A.P. 67, F.A.P. 75 & F.A.P. 668  
 \*\* D-6 SPFLD-CLRLAKE DIRKSEN 2002

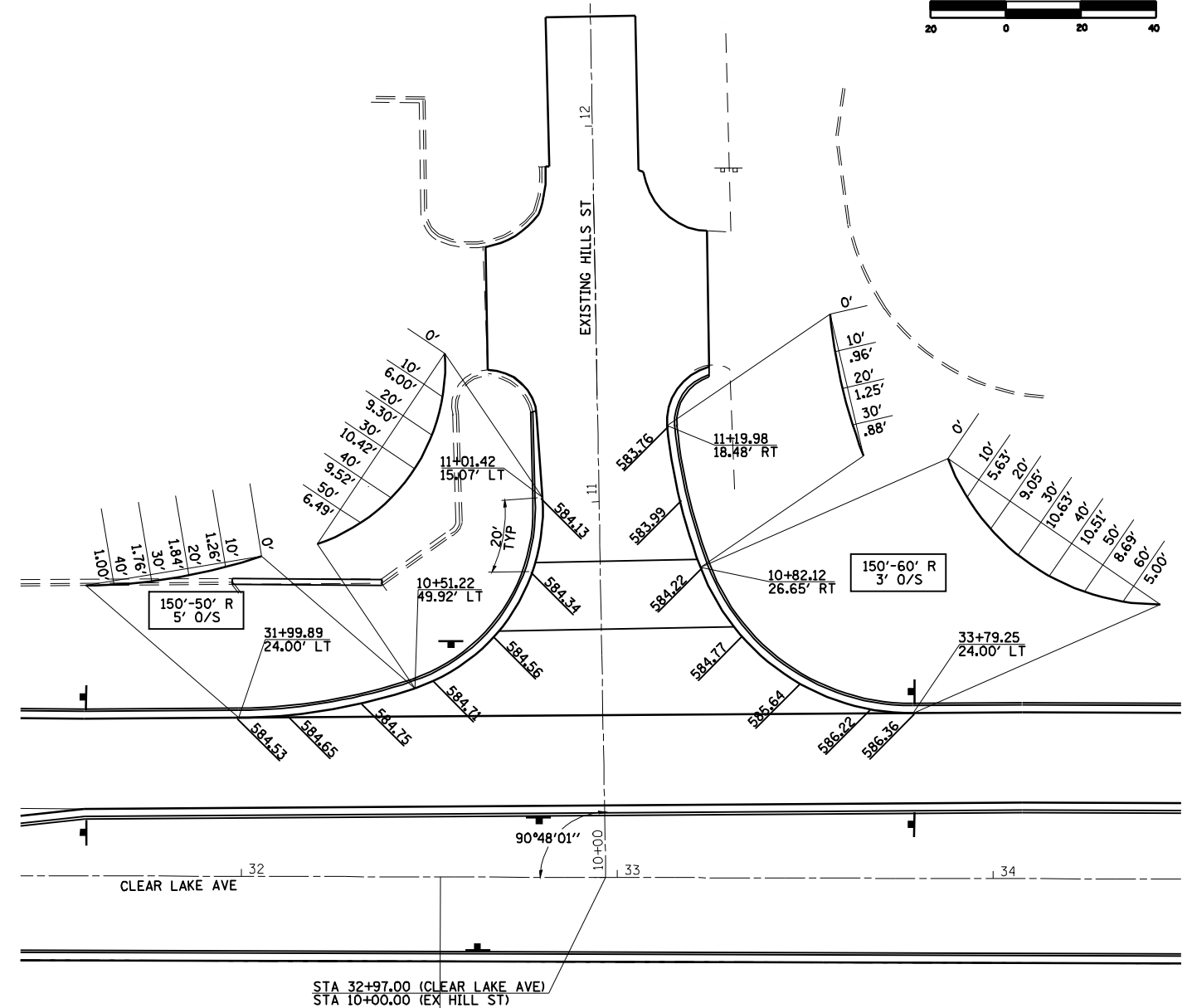
F.A.P. RTE.	SECTION	COUNTY	TOTAL SHEETS	SHEET NO.
*	**	SANGAMON	363	172
STA.		TO STA.		
FED. ROAD DIST. NO.		ILLINOIS FED. AID PROJECT		
CONTRACT NO. 72088				



**CLEAR LAKE - HARDEE'S / WENDY'S ENTRANCE**



**CLEAR LAKE - SHELL ENTRANCE**



**CLEAR LAKE - EXISTING HILL ST**

**LEGEND**

XXX-XX PROPOSED FINISHED ELEVATION

REVISIONS	
NAME	DATE

ILLINOIS DEPARTMENT OF TRANSPORTATION  
**INTERSECTION GEOMETRICS**  
 SCALE: 1"=20'  
 DATE 7/13/05  
 DRAWN BY NJV  
 CHECKED BY RMD