

• F.A.I. 72, F.A.P. 67, F.A.P. 75 & F.A.P. 668
• D-6 SPFLD-CLR LAKE DIRKSEN 2002

F.A.P. RTE.	SECTION	COUNTY	TOTAL SHEETS	SHEET NO.
•	••	SANGAMON	363	215A
STA.		TO STA.		
FED. ROAD DIST. NO.	ILLINOIS	FED. AID PROJECT		
CONTRACT NO. 72088				

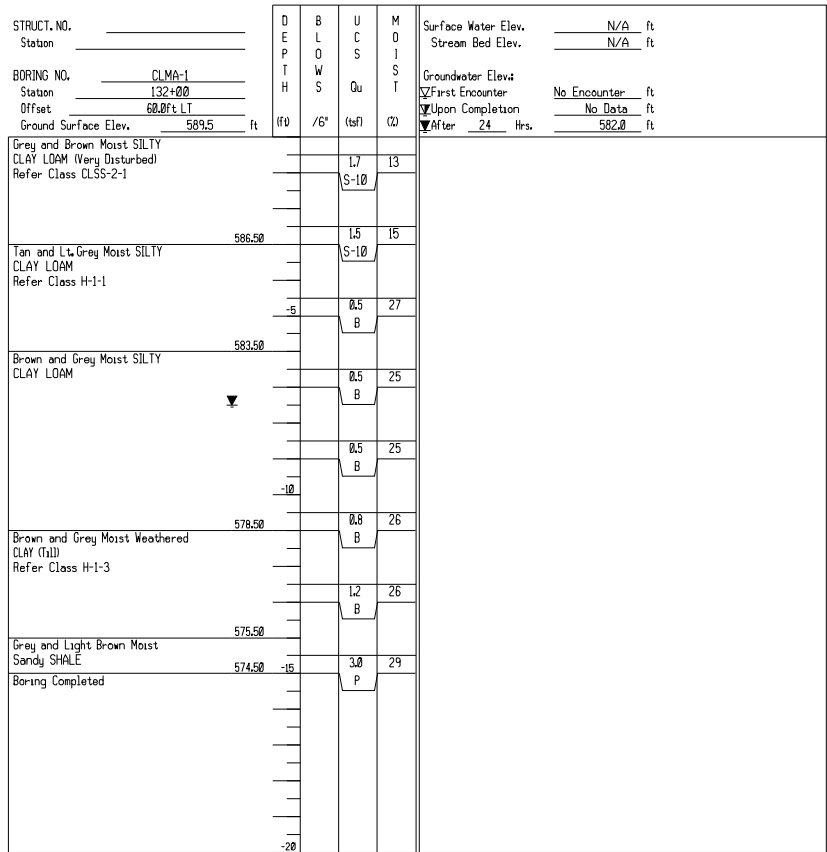


Illinois Department of Transportation
Division of Highways
District 6

SOIL BORING LOG

Page 1 of 1
Date 9/6/06

ROUTE Clear Lake-Dirksen DESCRIPTION Clear Lake Mast Arm LOGGED BY M. Toppin
SECTION D-6 Spfld-Clear-lake LOCATION S 1/4, SEC. 25, TWP. 16 N, RNG. 5 W, 3 PM
COUNTY Sangamon DRILLING METHOD Push Split Spoon HAMMER TYPE N/A



The Unconfined Compressive Strength (UCS) Failure Mode is indicated by (B-Bulge, S-Shear, P-Penetrometer, E-Estimated)
Abbreviations: W.O.H - Sampler Advanced By Weight of Hammer, W.D.P - Advanced by Weight of Pipe, B.S. - Before Seating
The SPT (N value) is the sum of the last two blow values in each sampling zone (ASTM D 1586) (BS, from 137 (Rev. 8-99))

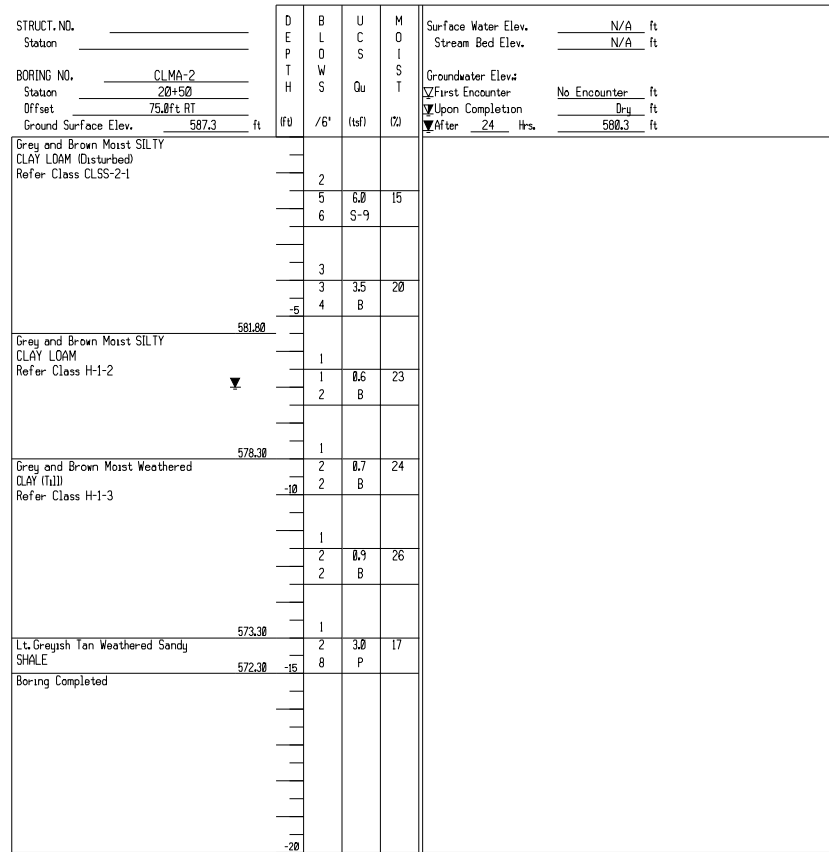


Illinois Department of Transportation
Division of Highways
District 6

SOIL BORING LOG

Page 1 of 1
Date 9/5/06

ROUTE Clear Lake-Dirksen DESCRIPTION Clear Lake Mast Arm LOGGED BY M. Toppin
SECTION D-6 Spfld-Clear-lake LOCATION N 1/4, SEC. 36, TWP. 16 N, RNG. 5 W, 3 PM
COUNTY Sangamon DRILLING METHOD HSA HAMMER TYPE Auto



The Unconfined Compressive Strength (UCS) Failure Mode is indicated by (B-Bulge, S-Shear, P-Penetrometer, E-Estimated)
Abbreviations: W.O.H - Sampler Advanced By Weight of Hammer, W.D.P - Advanced by Weight of Pipe, B.S. - Before Seating
The SPT (N value) is the sum of the last two blow values in each sampling zone (ASTM D 1586) (BS, from 137 (Rev. 8-99))

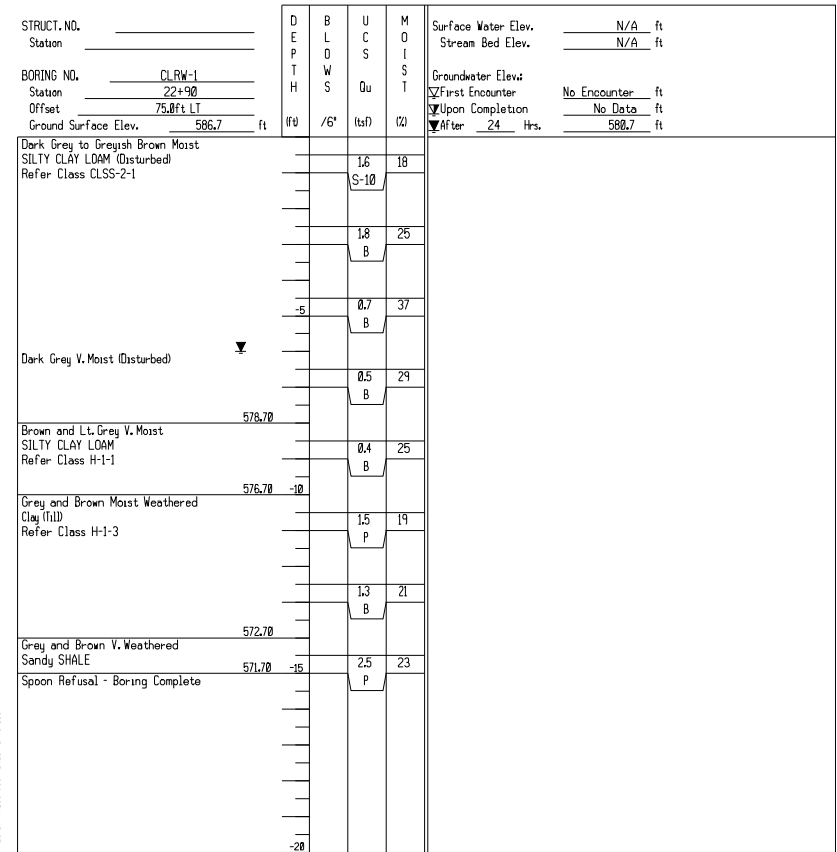


Illinois Department of Transportation
Division of Highways
District 6

SOIL BORING LOG

Page 1 of 1
Date 9/6/06

ROUTE Clear Lake-Dirksen DESCRIPTION Clear Lake Retaining Wall LOGGED BY M. Toppin
SECTION D-6 Spfld-Clear-lake LOCATION S 1/4, SEC. 25, TWP. 16 N, RNG. 5 W, 3 PM
COUNTY Sangamon DRILLING METHOD Push Split Spoon HAMMER TYPE N/A



The Unconfined Compressive Strength (UCS) Failure Mode is indicated by (B-Bulge, S-Shear, P-Penetrometer, E-Estimated)
Abbreviations: W.O.H - Sampler Advanced By Weight of Hammer, W.D.P - Advanced by Weight of Pipe, B.S. - Before Seating
The SPT (N value) is the sum of the last two blow values in each sampling zone (ASTM D 1586) (BS, from 137 (Rev. 8-99))

REVISIONS		ILLINOIS DEPARTMENT OF TRANSPORTATION DRAINAGE STRUCTURE BORINGS SCALE: NONE DATE 02/06	DRAWN BY MLO CHECKED BY CWG
NAME	DATE		