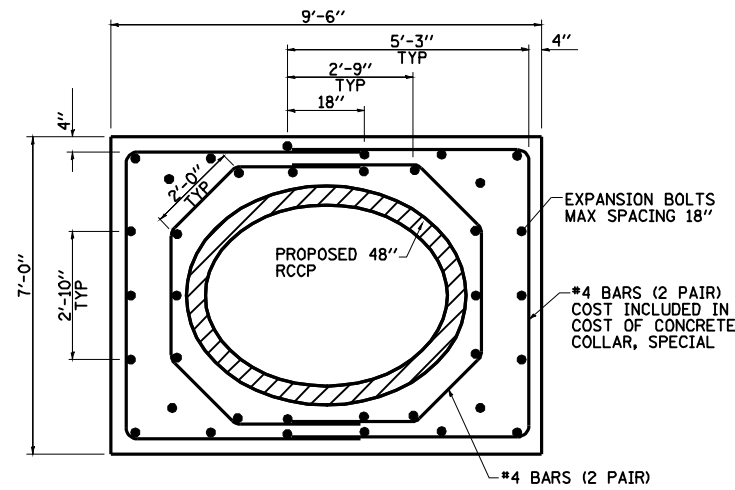
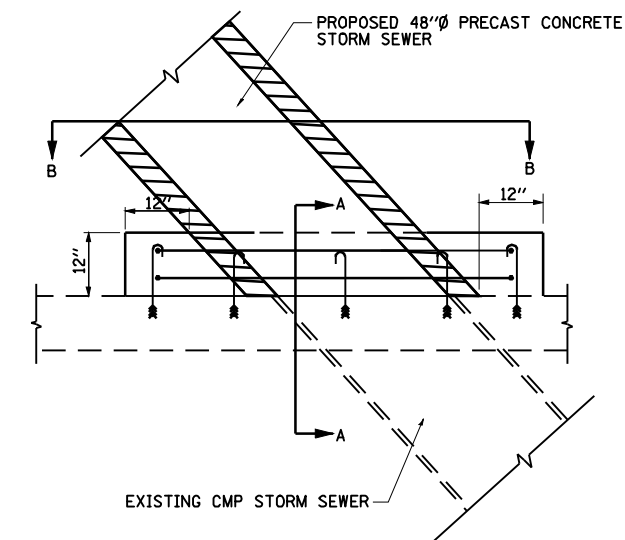


SECTION A-A

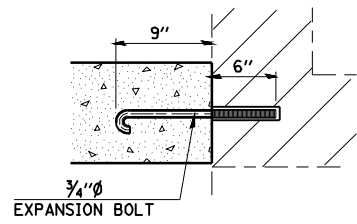


SECTION B-B



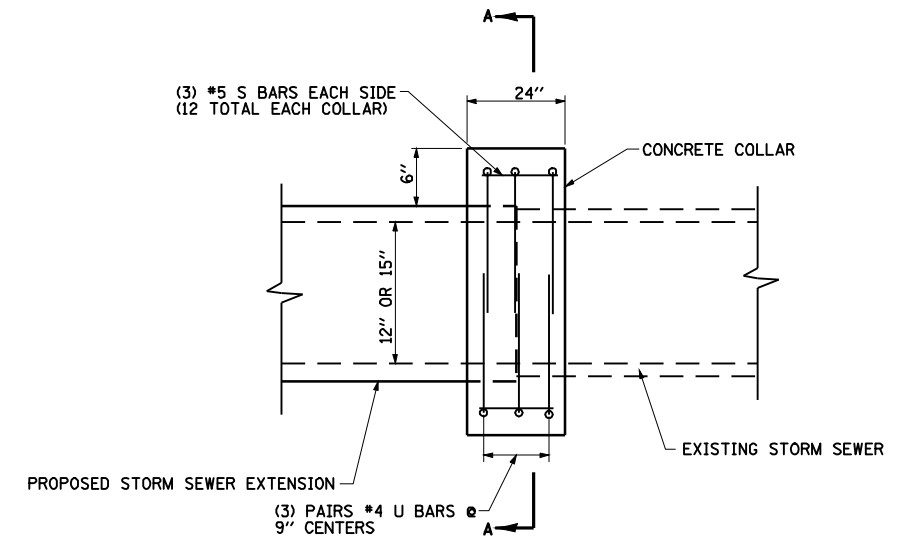
PLAN VIEW

CONCRETE COLLAR, SPECIAL
 STA. 30 + 15.00, 109' RT



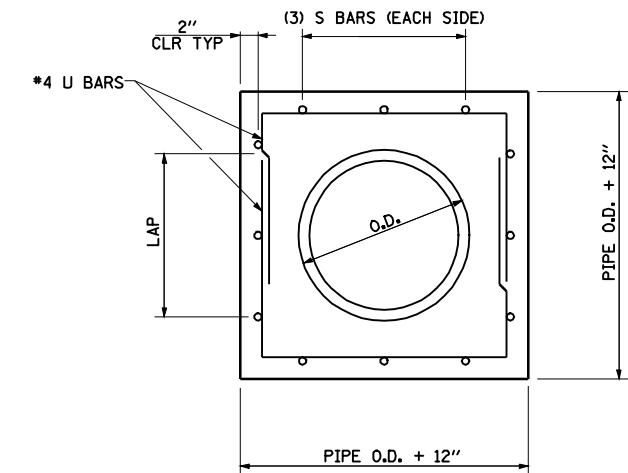
EXPANSION BOLT DETAIL

NOTE: EXPANSION BOLTS SHALL CONSIST OF SELF-DRILLING EXPANSION SHIELDS AND HOOKED BOLTS. HOOKED BOLTS SHALL EXTEND A MINIMUM OF 9" INTO THE NEW CONCRETE.



ELEVATION

- NOTE:
- EXISTING DRAINAGE STRUCTURE TO BE REMOVED AS APPLICABLE (NOT SHOWN FOR CLARITY).
 - THE COST OF REINFORCING BARS TO BE INCLUDED IN THE COST OF CONCRETE COLLAR.



SECTION A-A

CONCRETE COLLAR
 12" & 15" STORM SEWER

REVISIONS	
NAME	DATE

ILLINOIS DEPARTMENT OF TRANSPORTATION

CONCRETE COLLAR DETAILS

DATE 8/05
 DRAWN BY MLO
 CHECKED BY CWG