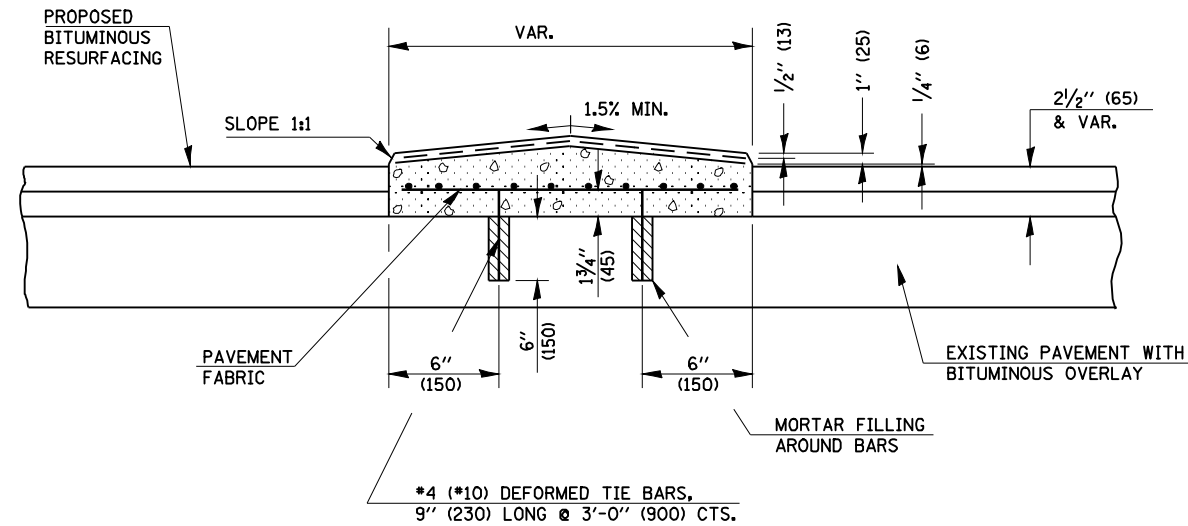
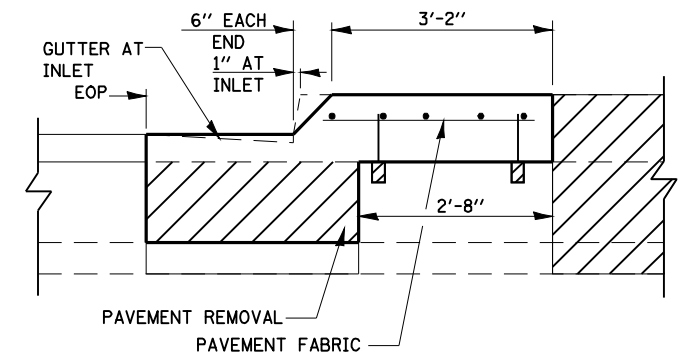


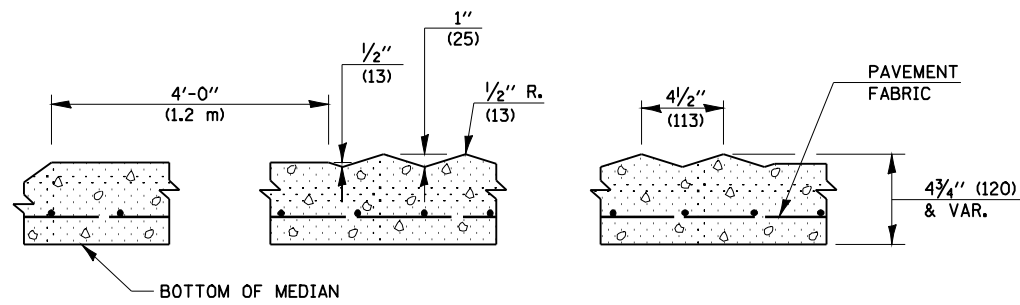
F.A.P. RTE.	SECTION	COUNTY	TOTAL SHEETS	SHEET NO.
*	**	SANGAMON	363	221A
STA.		TO STA.		
FED. ROAD DIST. NO.	ILLINOIS	FED. AID PROJECT		
CONTRACT NO. 72088				



TRANSVERSE SECTION



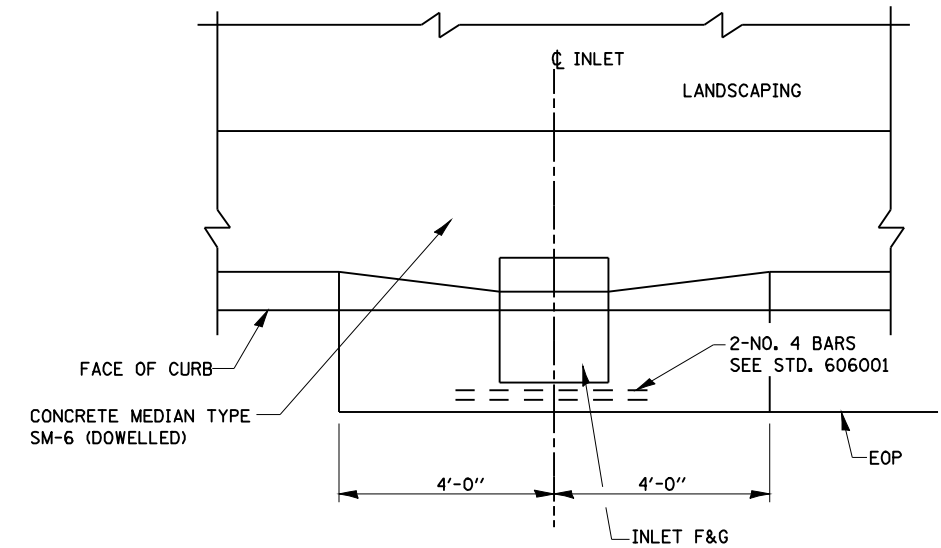
SECTION A-A



SECTION A-A

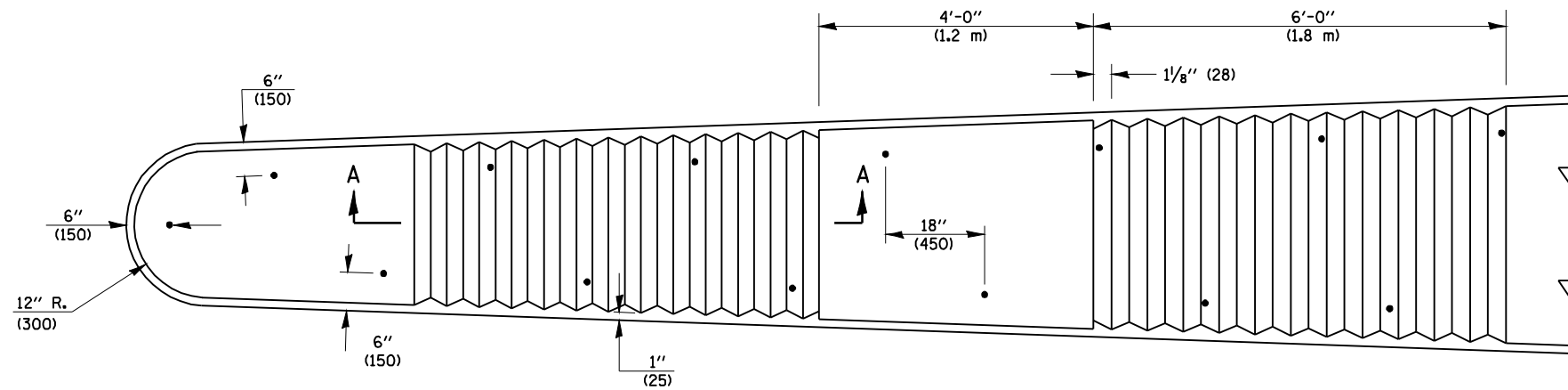
GENERAL NOTES

1. DOWELS AT 3'-0" (900) INTERVALS OR AS DIRECTED BY THE ENGINEER.
2. THE COST OF FURNISHING AND INSTALLING DOWEL BARS AND MORTAR FILLING SHALL BE INCLUDED IN THE CONTRACT UNIT PRICE PER SQ. FT. (m²) FOR CORRUGATED MEDIAN (DOWELLED).
3. SEE STANDARDS 420001 AND 420701 FOR DETAILS NOT SHOWN.



PLAN

INLET GUTTER AT DOWELLED MEDIANS
 INCLUDED IN THE UNIT PRICE OF CONCRETE MEDIAN, TYPE SM-6 (DOWELLED)



PLAN

REVISIONS	
NAME	DATE

ILLINOIS DEPARTMENT OF TRANSPORTATION

MISCELLANEOUS ROADWAY DETAILS

SCALE: NONE
 DATE 08/05

DRAWN BY MLO
 CHECKED BY SJK