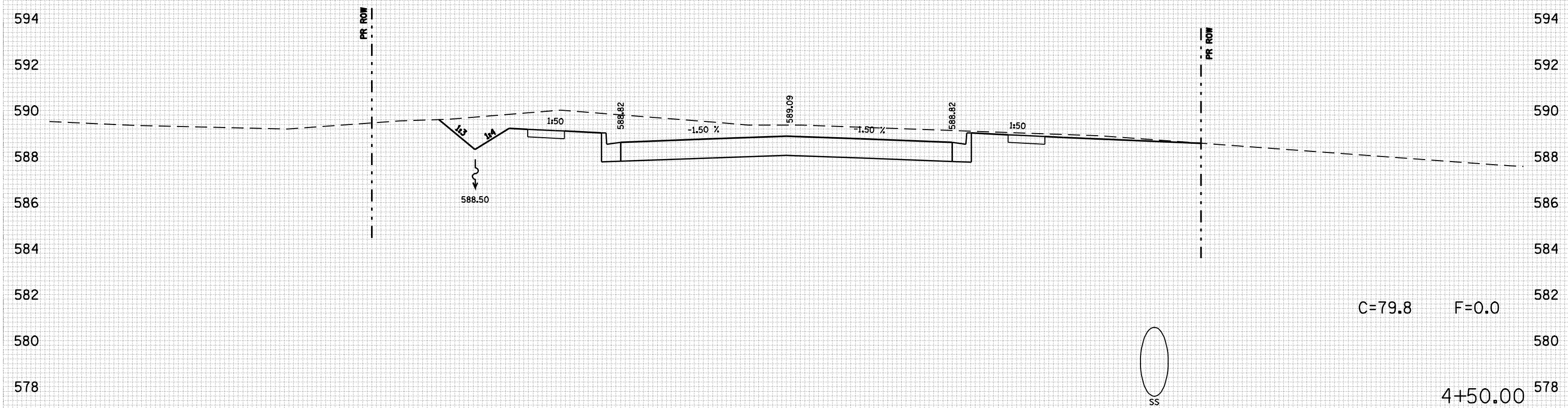


80 75 70 65 60 55 50 45 40 35 30 25 20 15 10 5 0 5 10 15 20 25 30 35 40 45 50 55 60 65 70 75 80

F.A. RTE.	SECTION	COUNTY	TOTAL SHEETS	SHEET NO.
•	••	SANGAMON	363	304
STA. 4+50.00		TO STA. 4+50.00		
FED. ROAD DIST. NO. ILLINOIS FED. AID PROJECT				
CONTRACT NO. 72088				
• F.A.I. 72, F.A.P. 67, F.A.P. 75 & F.A.P. 668				
•• D-6 SPFLD-CLRLAKE DIRKSEN 2002				

DATE	BY

DATE	BY



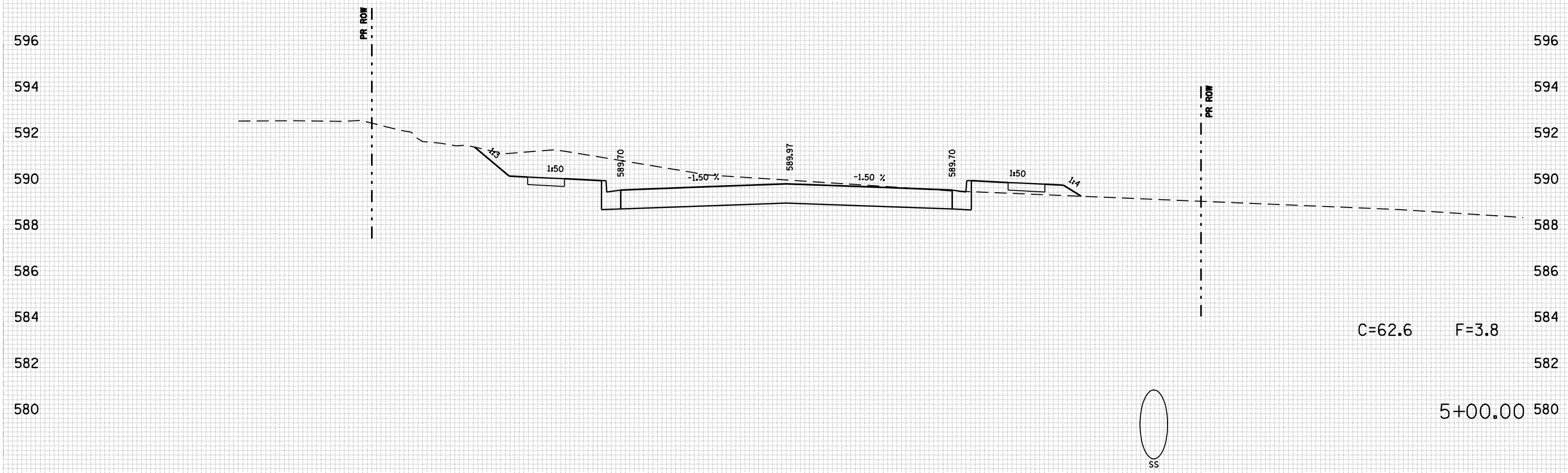
80 75 70 65 60 55 50 45 40 35 30 25 20 15 10 5 0 5 10 15 20 25 30 35 40 45 50 55 60 65 70 75 80

80 75 70 65 60 55 50 45 40 35 30 25 20 15 10 5 0 5 10 15 20 25 30 35 40 45 50 55 60 65 70 75 80

F.A. RTE.	SECTION	COUNTY	TOTAL SHEETS	SHEET NO.
•	••	SANGAMON	363	305
STA. 5+00.00		TO STA. 5+00.00		
FED. ROAD DIST. NO. ILLINOIS FED. AID PROJECT				
CONTRACT NO. 72088				
• F.A.I. 72, F.A.P. 67, F.A.P. 75 & F.A.P. 668				
•• D-6 SPFLD-CLRLAKE DIRKSEN 2002				

BY	DATE

BY	DATE



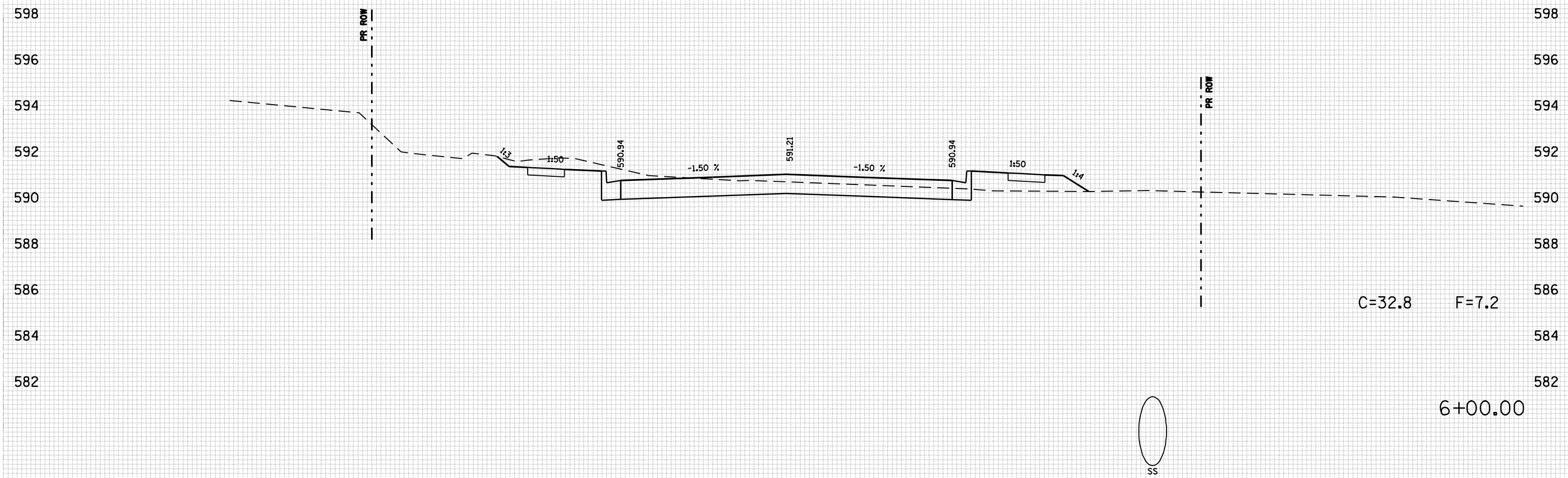
80 75 70 65 60 55 50 45 40 35 30 25 20 15 10 5 0 5 10 15 20 25 30 35 40 45 50 55 60 65 70 75 80

80 75 70 65 60 55 50 45 40 35 30 25 20 15 10 5 0 5 10 15 20 25 30 35 40 45 50 55 60 65 70 75 80

F.A. RTE.	SECTION	COUNTY	TOTAL SHEETS	SHEET NO.
•	••	SANGAMON	363	307
STA. 6+00.00		TO STA. 6+00.00		
FED. ROAD DIST. NO. ILLINOIS FED. AID PROJECT				
CONTRACT NO. 72088				
• F.A.I. 72, F.A.P. 67, F.A.P. 75 & F.A.P. 668				
•• D-6 SPFLD-CLRLAKE DIRKSEN 2002				

BY	DATE

BY	DATE



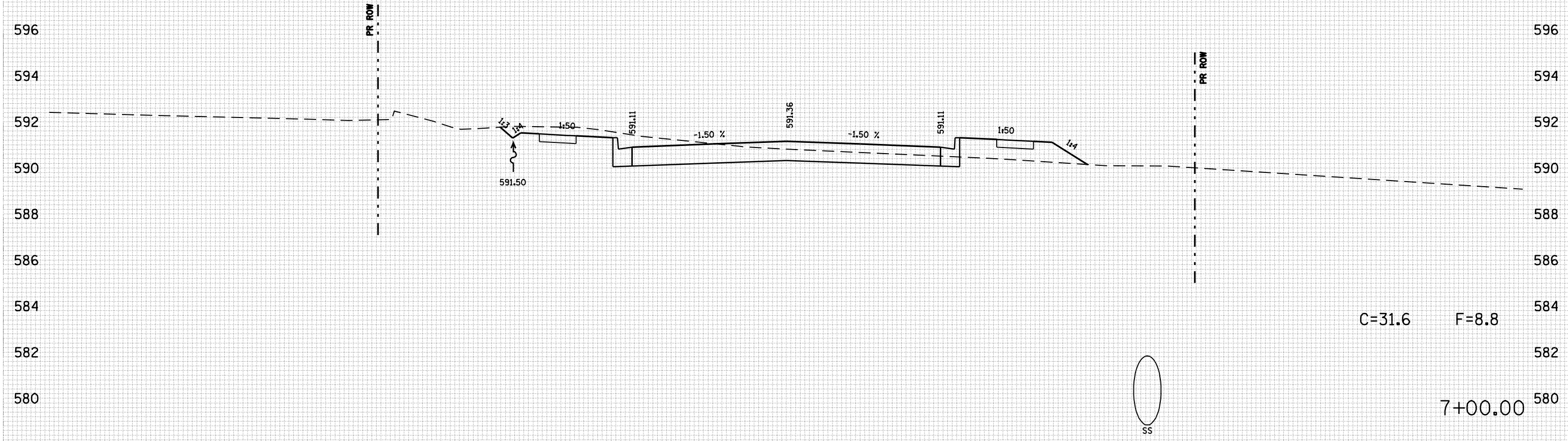
80 75 70 65 60 55 50 45 40 35 30 25 20 15 10 5 0 5 10 15 20 25 30 35 40 45 50 55 60 65 70 75 80

80 75 70 65 60 55 50 45 40 35 30 25 20 15 10 5 0 5 10 15 20 25 30 35 40 45 50 55 60 65 70 75 80

F.A. RTE.	SECTION	COUNTY	TOTAL SHEETS	SHEET NO.
•	••	SANGAMON	363	309
STA. 7+00.00		TO STA. 7+00.00		
FED. ROAD DIST. NO. ILLINOIS FED. AID PROJECT				
CONTRACT NO. 72088				
• F.A.I. 72, F.A.P. 67, F.A.P. 75 & F.A.P. 668				
•• D-6 SPFLD-CLRLAKE DIRKSEN 2002				

BY	DATE

BY	DATE



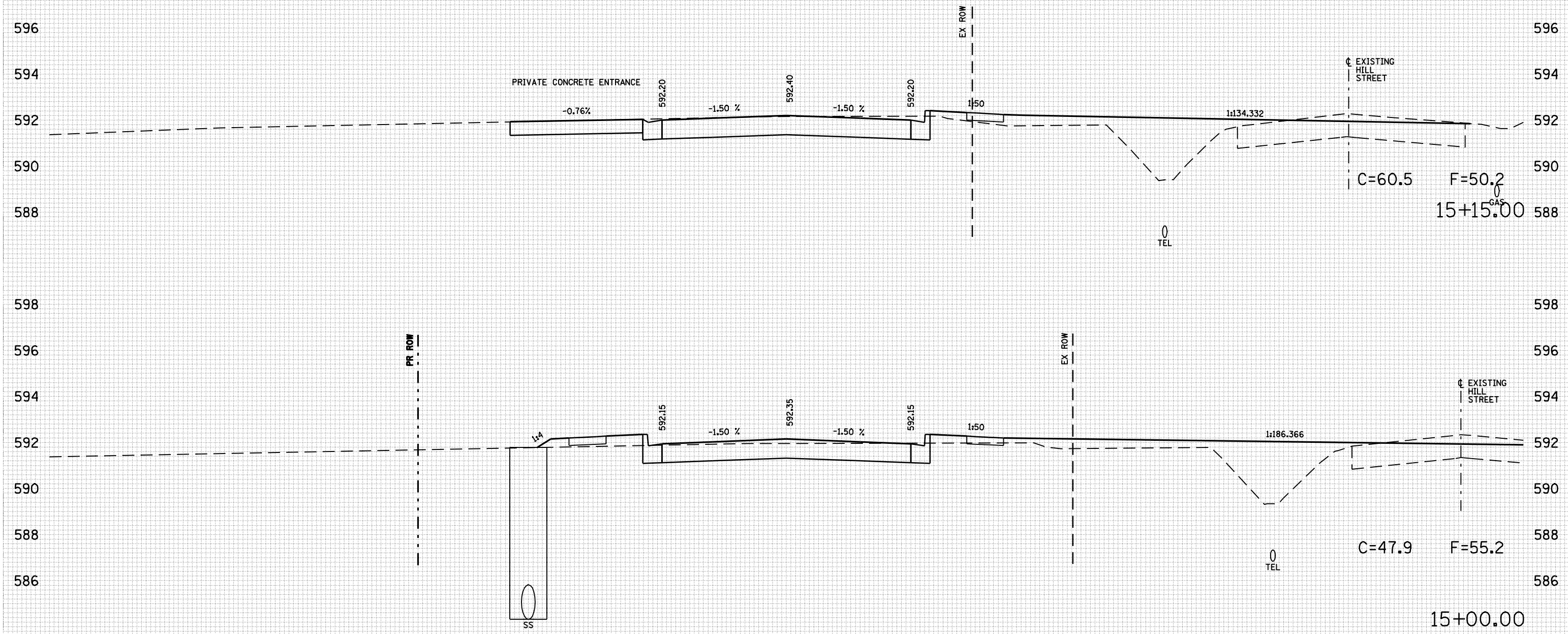
80 75 70 65 60 55 50 45 40 35 30 25 20 15 10 5 0 5 10 15 20 25 30 35 40 45 50 55 60 65 70 75 80

80 75 70 65 60 55 50 45 40 35 30 25 20 15 10 5 0 5 10 15 20 25 30 35 40 45 50 55 60 65 70 75 80

F.A. RTE.	SECTION	COUNTY	TOTAL SHEETS	SHEET NO.
•	••	SANGAMON	363	320
STA. 15+00.00		TO STA. 15+15.00		
FED. ROAD DIST. NO. ILLINOIS FED. AID PROJECT				
CONTRACT NO. 72088				
• F.A.I. 72, F.A.P. 67, F.A.P. 75 & F.A.P. 668				
•• D-6 SPFLD-CLRLAKE DIRKSEN 2002				

BY	DATE

BY	DATE



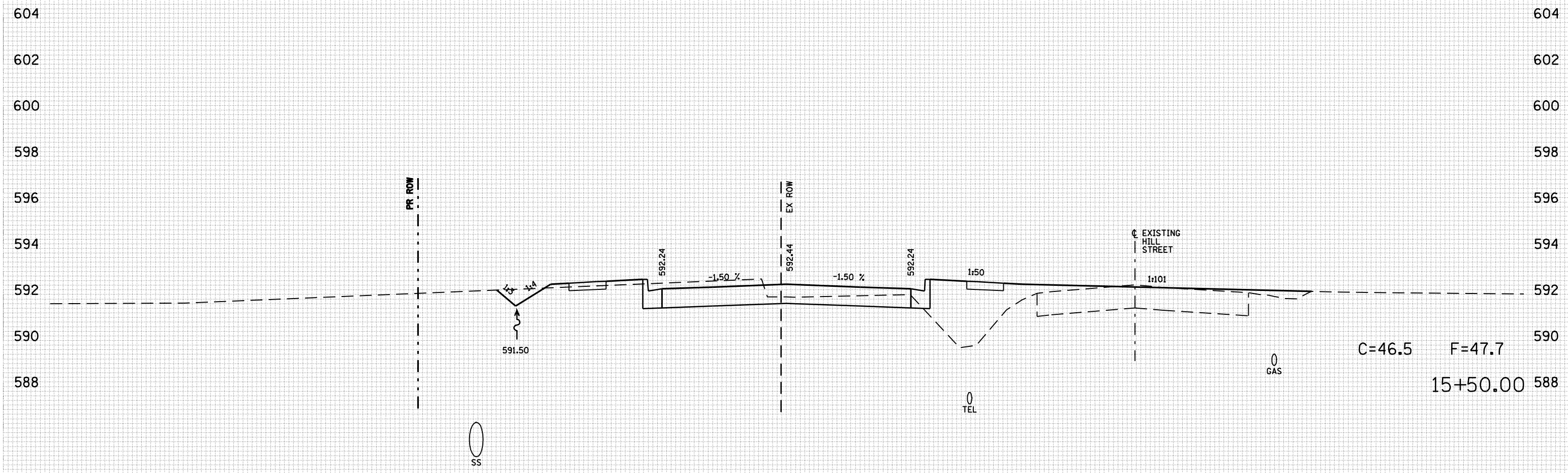
80 75 70 65 60 55 50 45 40 35 30 25 20 15 10 5 0 5 10 15 20 25 30 35 40 45 50 55 60 65 70 75 80

80 75 70 65 60 55 50 45 40 35 30 25 20 15 10 5 0 5 10 15 20 25 30 35 40 45 50 55 60 65 70 75 80

F.A. RTE.	SECTION	COUNTY	TOTAL SHEETS	SHEET NO.
•	••	SANGAMON	363	321
STA. 15+50.00		TO STA. 15+50.00		
FED. ROAD DIST. NO. ILLINOIS FED. AID PROJECT				
CONTRACT NO. 72088				
• F.A.I. 72, F.A.P. 67, F.A.P. 75 & F.A.P. 668				
•• D-6 SPFLD-CLRLAKE DIRKSEN 2002				

BY	DATE

BY	DATE



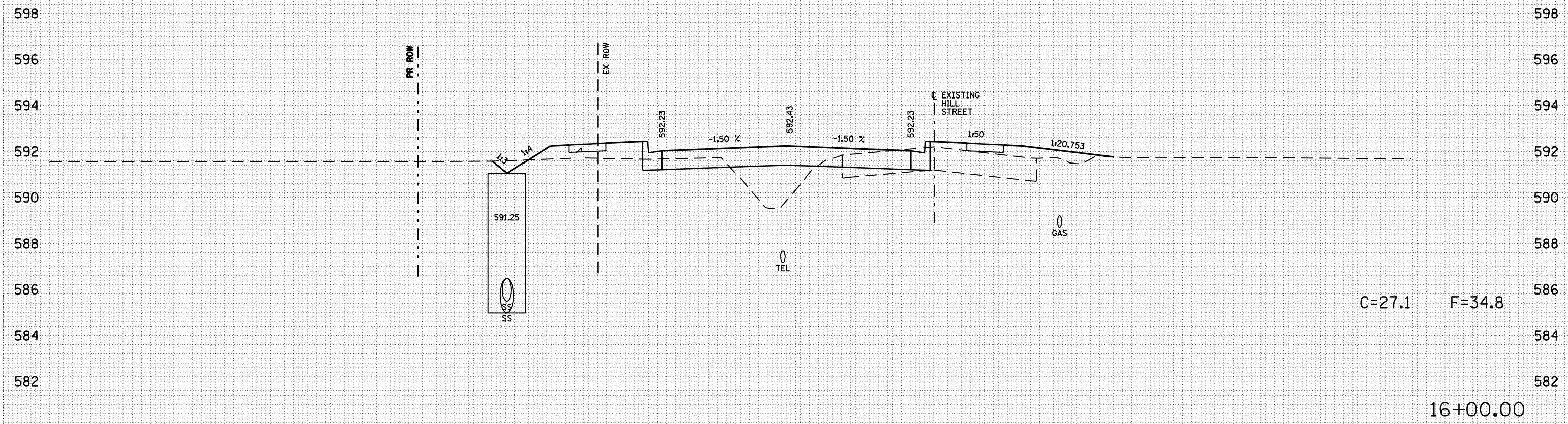
80 75 70 65 60 55 50 45 40 35 30 25 20 15 10 5 0 5 10 15 20 25 30 35 40 45 50 55 60 65 70 75 80

80 75 70 65 60 55 50 45 40 35 30 25 20 15 10 5 0 5 10 15 20 25 30 35 40 45 50 55 60 65 70 75 80

F.A. RTE.	SECTION	COUNTY	TOTAL SHEETS	SHEET NO.
•	••	SANGAMON	363	322
STA. 16+00.00		TO STA. 16+00.00		
FED. ROAD DIST. NO. ILLINOIS FED. AID PROJECT				
CONTRACT NO. 72088				
• F.A.I. 72, F.A.P. 67, F.A.P. 75 & F.A.P. 668				
•• D-6 SPFLD-CLRLAKE DIRKSEN 2002				

BY	DATE

BY	DATE



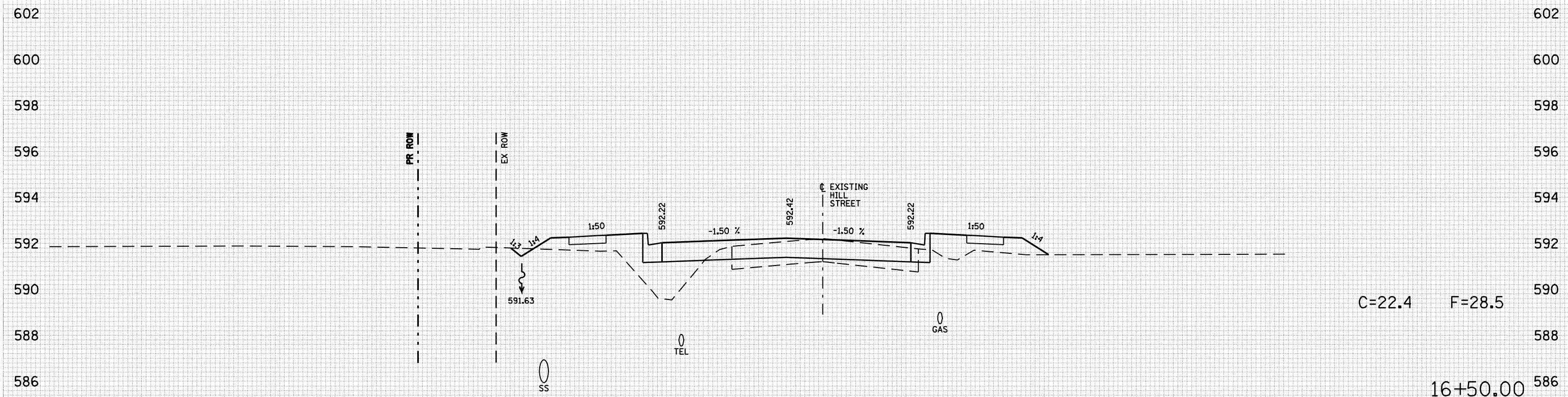
80 75 70 65 60 55 50 45 40 35 30 25 20 15 10 5 0 5 10 15 20 25 30 35 40 45 50 55 60 65 70 75 80

80 75 70 65 60 55 50 45 40 35 30 25 20 15 10 5 0 5 10 15 20 25 30 35 40 45 50 55 60 65 70 75 80

F.A. RTE.	SECTION	COUNTY	TOTAL SHEETS	SHEET NO.
•	••	SANGAMON	363	323
STA. 16+50.00		TO STA. 16+50.00		
FED. ROAD DIST. NO. ILLINOIS FED. AID PROJECT				
CONTRACT NO. 72088				
• F.A.I. 72, F.A.P. 67, F.A.P. 75 & F.A.P. 668				
•• D-6 SPFLD-CLRLAKE DIRKSEN 2002				

BY	DATE

BY	DATE



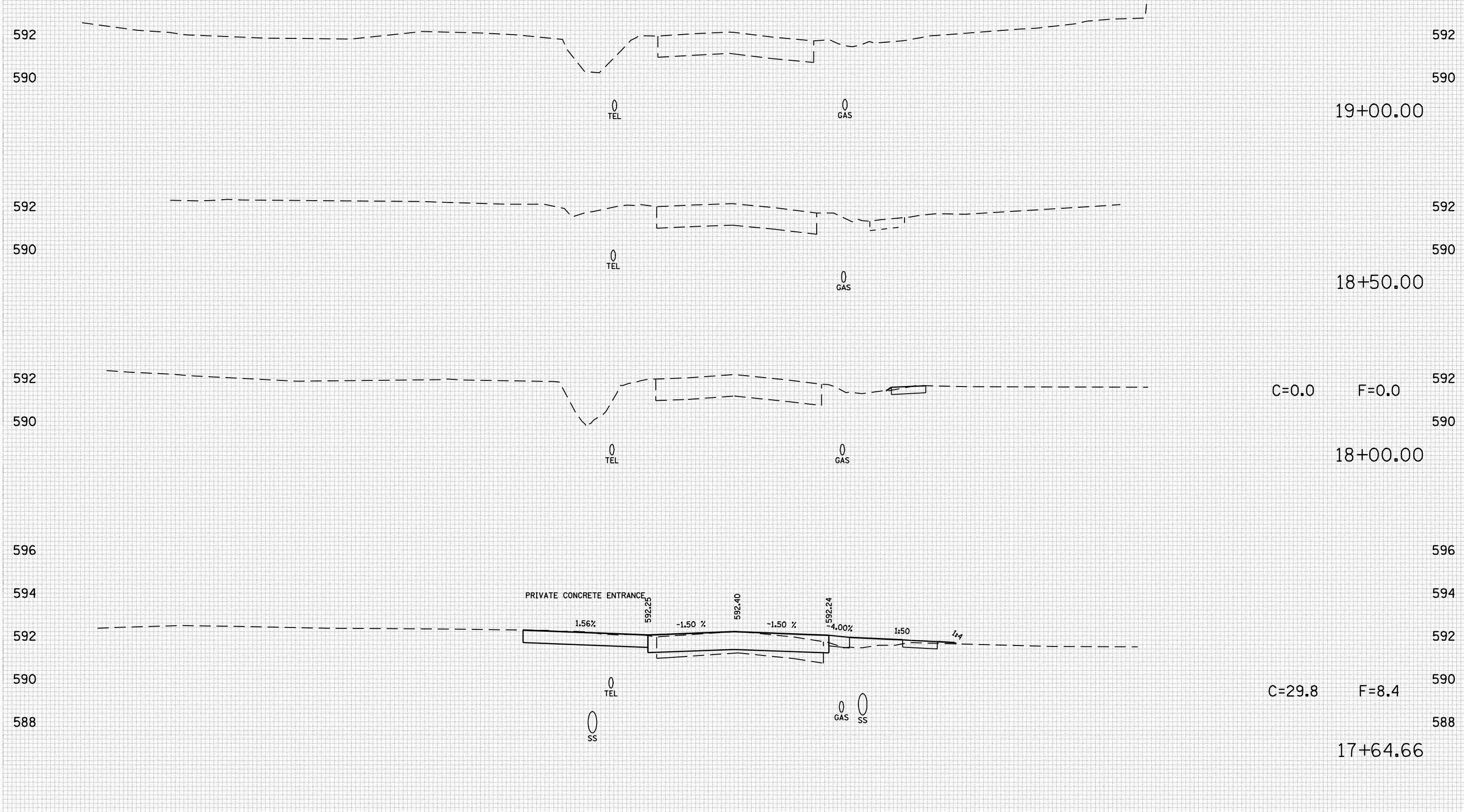
80 75 70 65 60 55 50 45 40 35 30 25 20 15 10 5 0 5 10 15 20 25 30 35 40 45 50 55 60 65 70 75 80

80 75 70 65 60 55 50 45 40 35 30 25 20 15 10 5 0 5 10 15 20 25 30 35 40 45 50 55 60 65 70 75 80

F.A. RTE.	SECTION	COUNTY	TOTAL SHEETS	SHEET NO.
•	••	SANGAMON	363	326
STA. 17+64.66		TO STA. 19+00.00		
FED. ROAD DIST. NO. ILLINOIS FED. AID PROJECT				
CONTRACT NO. 72088				
• F.A.I. 72, F.A.P. 67, F.A.P. 75 & F.A.P. 668				
•• D-6 SPFLD-CLRLAKE DIRKSEN 2002				

BY	DATE

BY	DATE



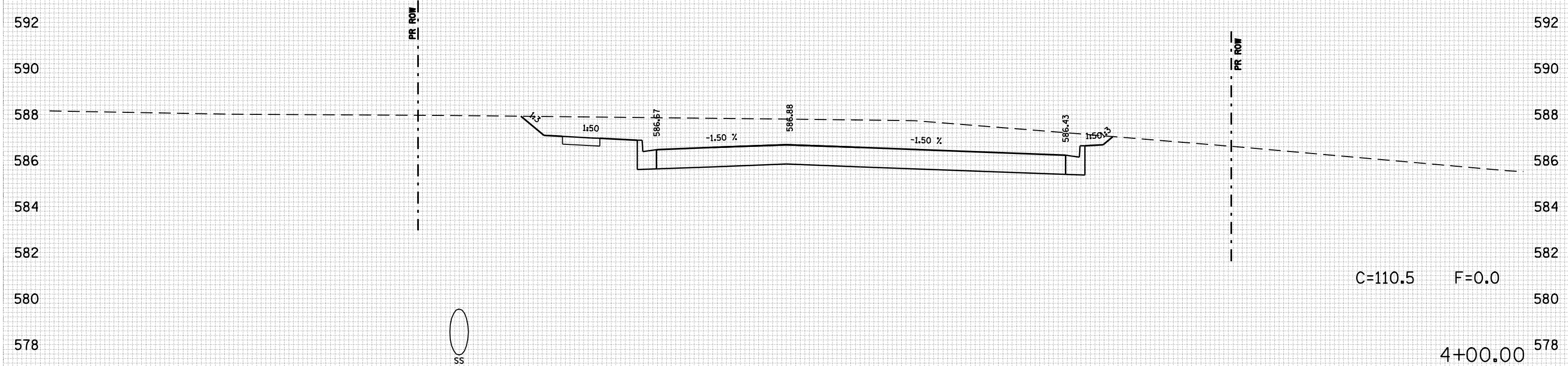
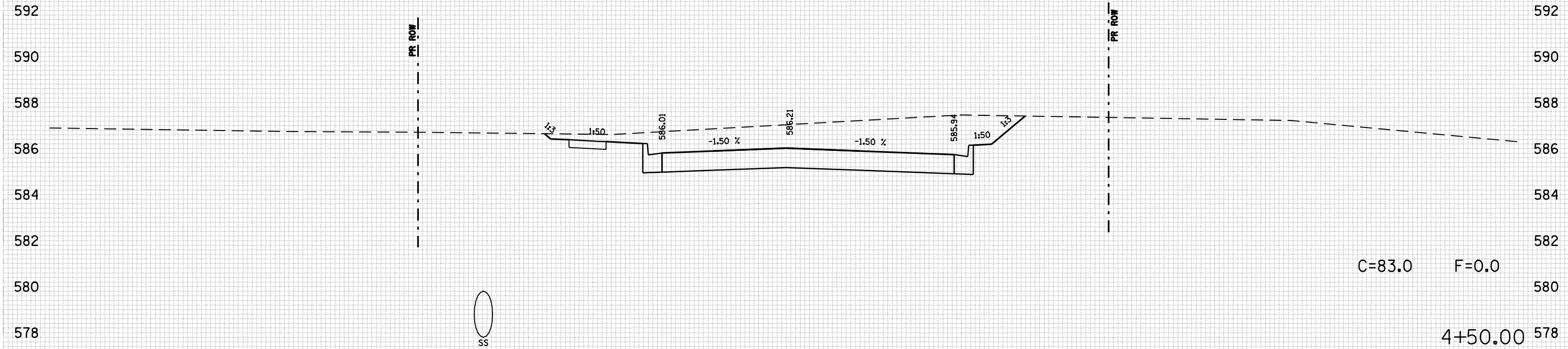
80 75 70 65 60 55 50 45 40 35 30 25 20 15 10 5 0 5 10 15 20 25 30 35 40 45 50 55 60 65 70 75 80

80 75 70 65 60 55 50 45 40 35 30 25 20 15 10 5 0 5 10 15 20 25 30 35 40 45 50 55 60 65 70 75 80

F.A. RTE.	SECTION	COUNTY	TOTAL SHEETS	SHEET NO.
•	••	SANGAMON	363	331
STA. 4+00.00		TO STA. 4+50.00		
FED. ROAD DIST. NO. ILLINOIS FED. AID PROJECT				
CONTRACT NO. 72088				
• F.A.I. 72, F.A.P. 67, F.A.P. 75 & F.A.P. 668				
•• D-6 SPFLD-CLRLAKE DIRKSEN 2002				

BY	DATE

BY	DATE



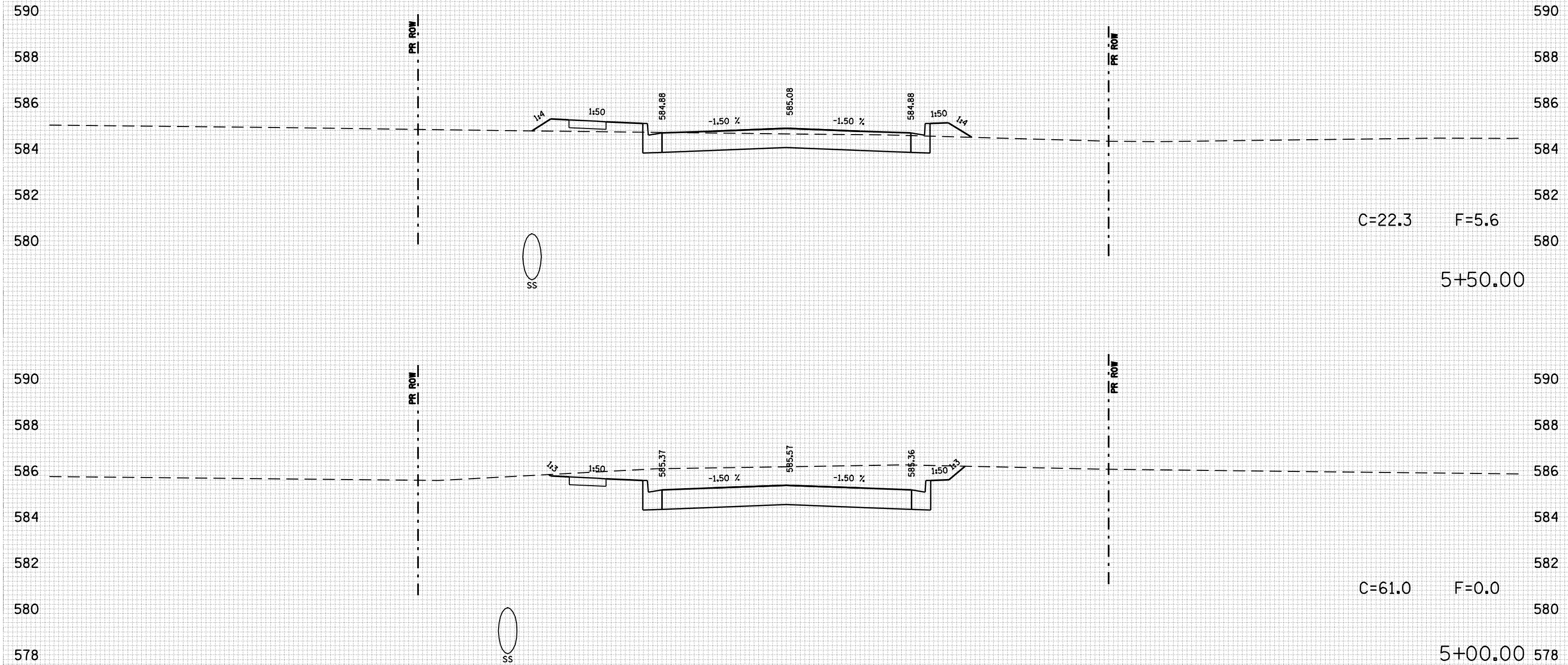
80 75 70 65 60 55 50 45 40 35 30 25 20 15 10 5 0 5 10 15 20 25 30 35 40 45 50 55 60 65 70 75 80

80 75 70 65 60 55 50 45 40 35 30 25 20 15 10 5 0 5 10 15 20 25 30 35 40 45 50 55 60 65 70 75 80

F.A. RTE.	SECTION	COUNTY	TOTAL SHEETS	SHEET NO.
•	••	SANGAMON	363	332
STA. 5+00.00		TO STA. 5+50.00		
FED. ROAD DIST. NO. ILLINOIS FED. AID PROJECT				
CONTRACT NO. 72088				
• F.A.I. 72, F.A.P. 67, F.A.P. 75 & F.A.P. 668				
•• D-6 SPFLD-CLRLAKE DIRKSEN 2002				

BY	DATE

BY	DATE



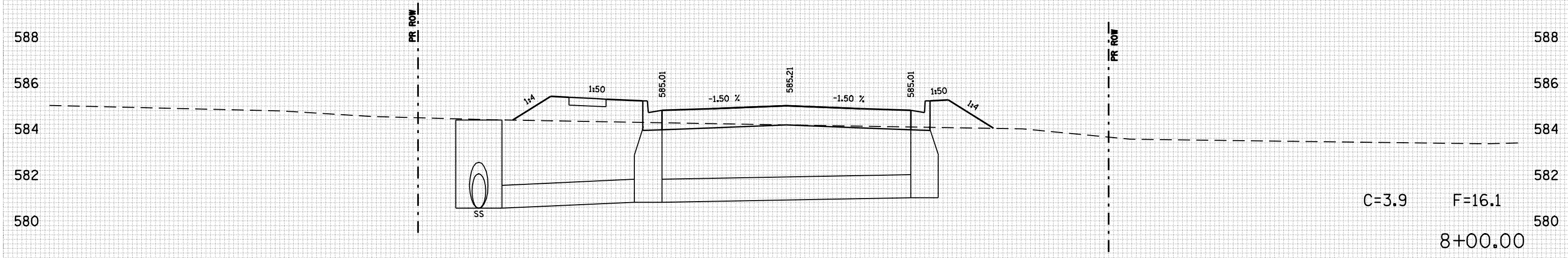
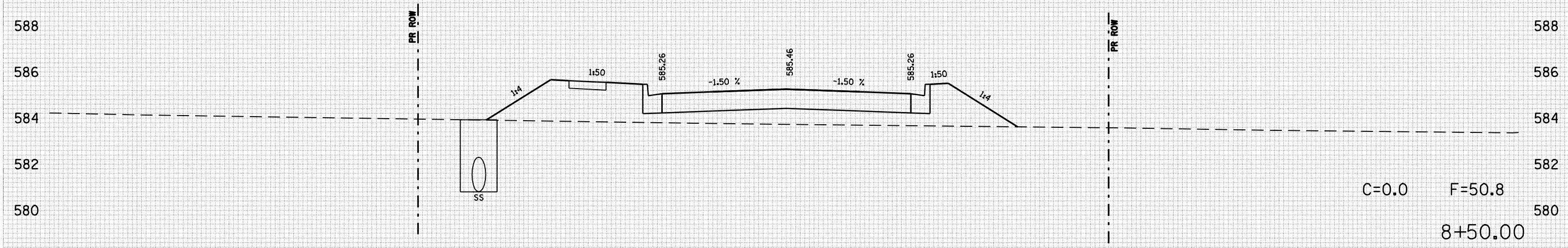
80 75 70 65 60 55 50 45 40 35 30 25 20 15 10 5 0 5 10 15 20 25 30 35 40 45 50 55 60 65 70 75 80

80 75 70 65 60 55 50 45 40 35 30 25 20 15 10 5 0 5 10 15 20 25 30 35 40 45 50 55 60 65 70 75 80

F.A. RTE.	SECTION	COUNTY	TOTAL SHEETS	SHEET NO.
•	••	SANGAMON	363	335
STA. 8+00.00		TO STA. 8+50.00		
FED. ROAD DIST. NO. ILLINOIS FED. AID PROJECT				
CONTRACT NO. 72088				
• F.A.I. 72, F.A.P. 67, F.A.P. 75 & F.A.P. 668				
•• D-6 SPFLD-CLRLAKE DIRKSEN 2002				

BY	DATE

BY	DATE



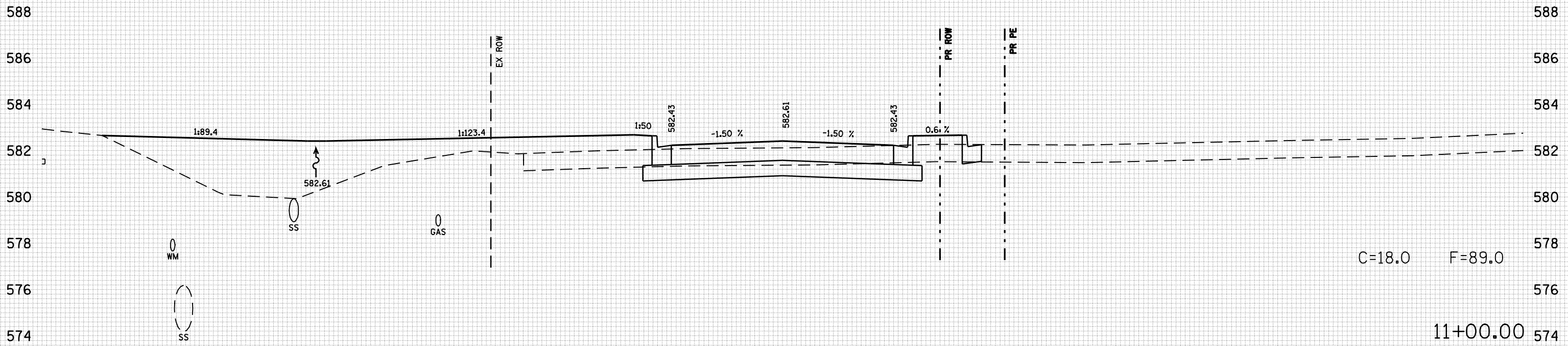
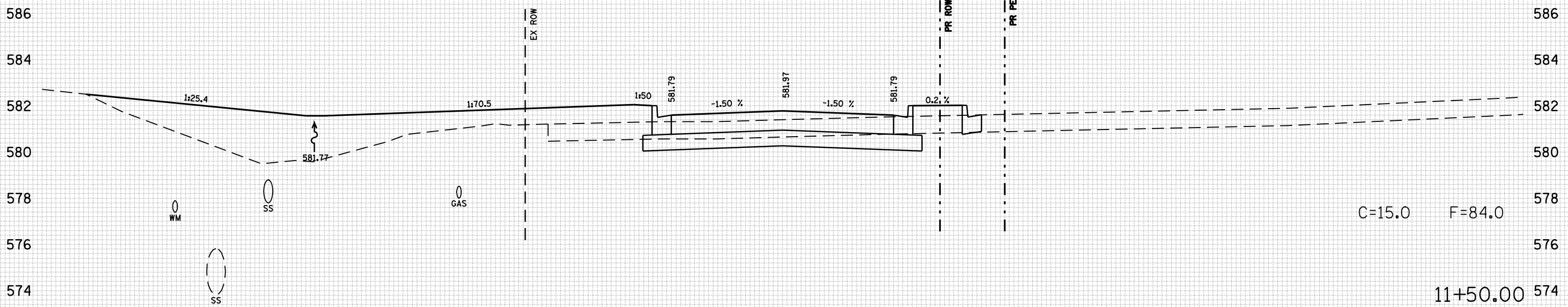
80 75 70 65 60 55 50 45 40 35 30 25 20 15 10 5 0 5 10 15 20 25 30 35 40 45 50 55 60 65 70 75 80

80 75 70 65 60 55 50 45 40 35 30 25 20 15 10 5 0 5 10 15 20 25 30 35 40 45 50 55 60 65 70 75 80

F.A. RTE.	SECTION	COUNTY	TOTAL SHEETS	SHEET NO.
•	••	SANGAMON	363	337
STA. 11+00.00		TO STA. 11+50.00		
FED. ROAD DIST. NO. ILLINOIS FED. AID PROJECT				
CONTRACT NO. 72088				
• F.A.I. 72, F.A.P. 67, F.A.P. 75 & F.A.P. 668				
•• D-6 SPFLD-CLRLAKE DIRKSEN 2002				

BY	DATE

BY	DATE



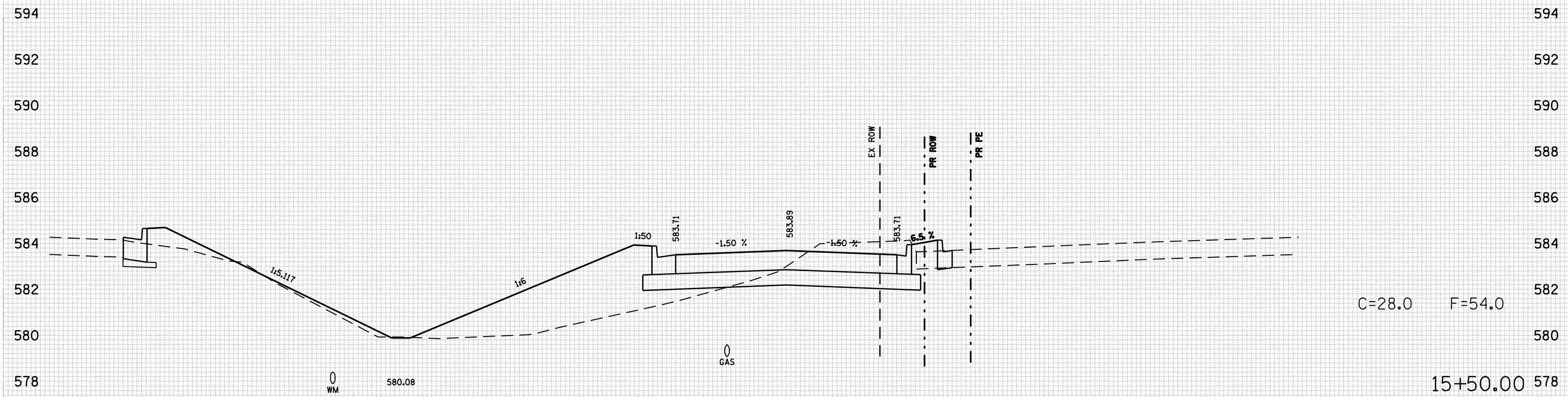
80 75 70 65 60 55 50 45 40 35 30 25 20 15 10 5 0 5 10 15 20 25 30 35 40 45 50 55 60 65 70 75 80

80 75 70 65 60 55 50 45 40 35 30 25 20 15 10 5 0 5 10 15 20 25 30 35 40 45 50 55 60 65 70 75 80

F.A. RTE.	SECTION	COUNTY	TOTAL SHEETS	SHEET NO.
•	••	SANGAMON	363	343
STA. 15+50.00		TO STA. 15+50.00		
FED. ROAD DIST. NO. ILLINOIS FED. AID PROJECT				
CONTRACT NO. 72088				
• F.A.I. 72, F.A.P. 67, F.A.P. 75 & F.A.P. 668				
•• D-6 SPFLD-CLRLAKE DIRKSEN 2002				

BY	DATE

BY	DATE



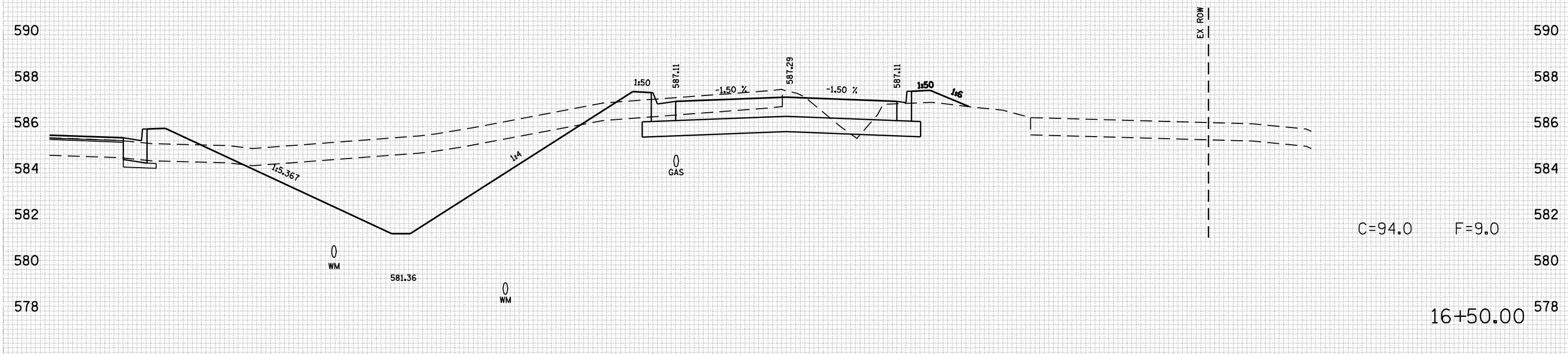
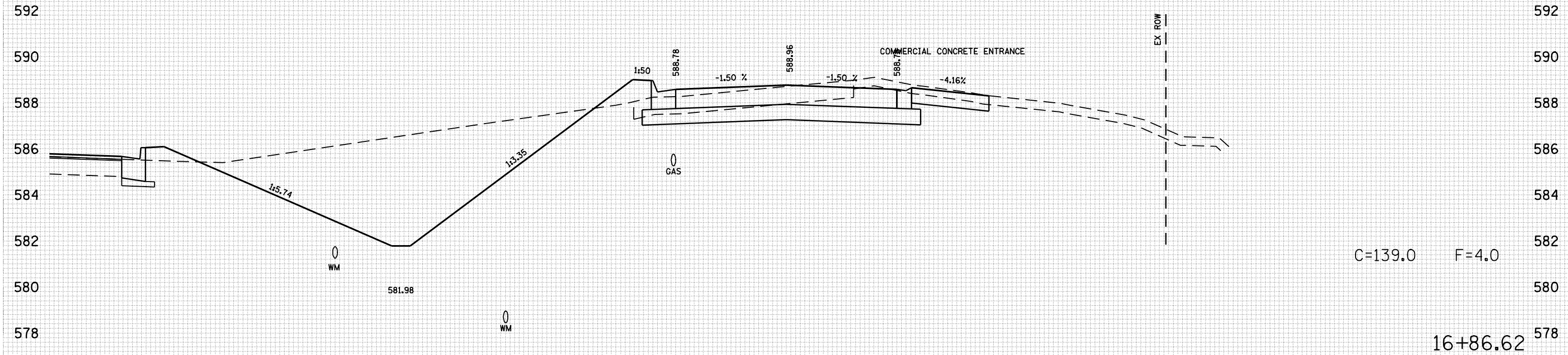
80 75 70 65 60 55 50 45 40 35 30 25 20 15 10 5 0 5 10 15 20 25 30 35 40 45 50 55 60 65 70 75 80

80 75 70 65 60 55 50 45 40 35 30 25 20 15 10 5 0 5 10 15 20 25 30 35 40 45 50 55 60 65 70 75 80

F.A. RTE.	SECTION	COUNTY	TOTAL SHEETS	SHEET NO.
•	••	SANGAMON	363	345
STA. 16+50.00		TO STA. 16+86.62		
FED. ROAD DIST. NO. ILLINOIS FED. AID PROJECT				
CONTRACT NO. 72088				
• F.A.I. 72, F.A.P. 67, F.A.P. 75 & F.A.P. 668				
•• D-6 SPFLD-CLRLAKE DIRKSEN 2002				

BY	DATE

BY	DATE

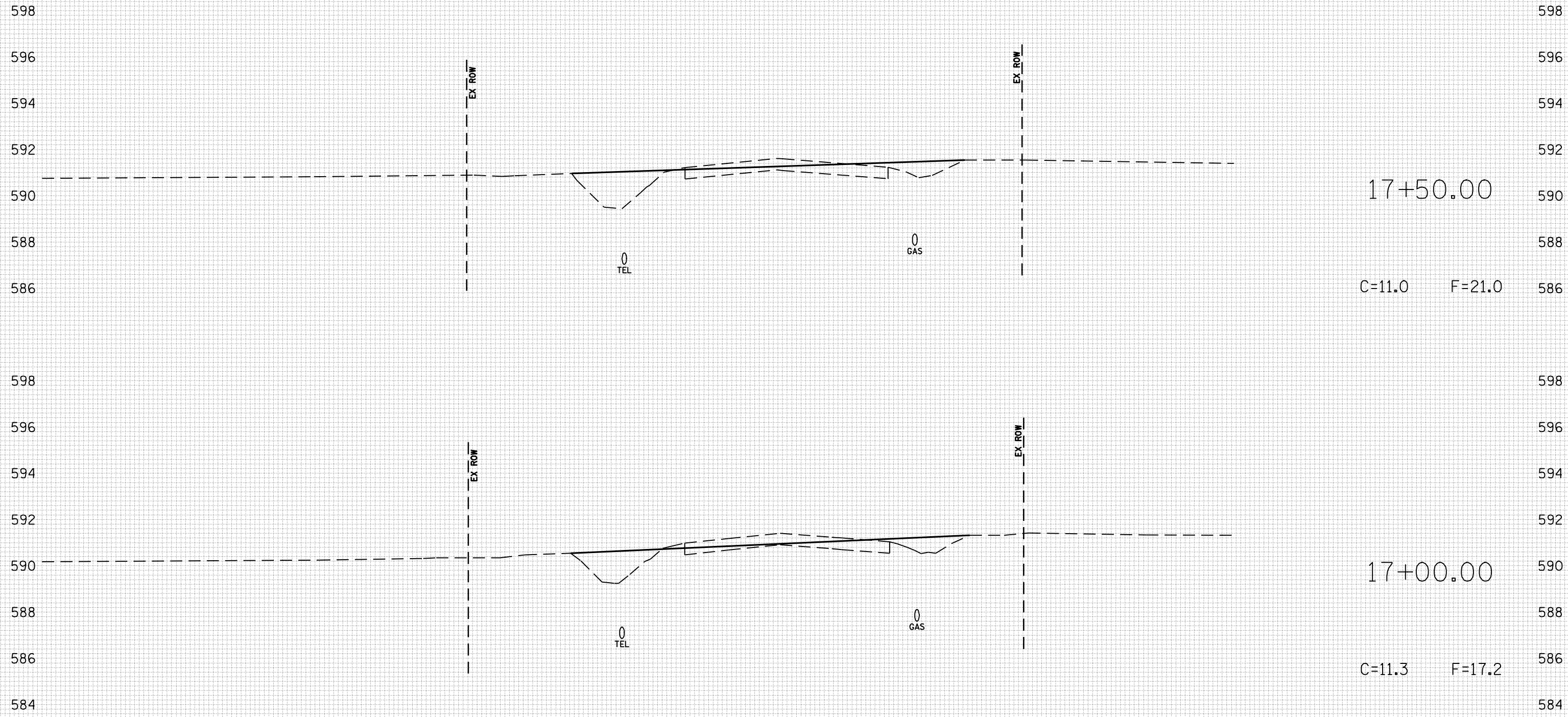


80 75 70 65 60 55 50 45 40 35 30 25 20 15 10 5 0 5 10 15 20 25 30 35 40 45 50 55 60 65 70 75 80

F.A. RTE.	SECTION	COUNTY	TOTAL SHEETS	SHEET NO.
•	••	SANGAMON	363	353
STA. 17+00.00		TO STA. 17+50.00		
FED. ROAD DIST. NO. ILLINOIS FED. AID PROJECT				
CONTRACT NO. 72088				
• F.A.I. 72, F.A.P. 67, F.A.P. 75 & F.A.P. 668				
•• D-6 SPFLD-CLRLAKE DIRKSEN 2002				

BY	DATE

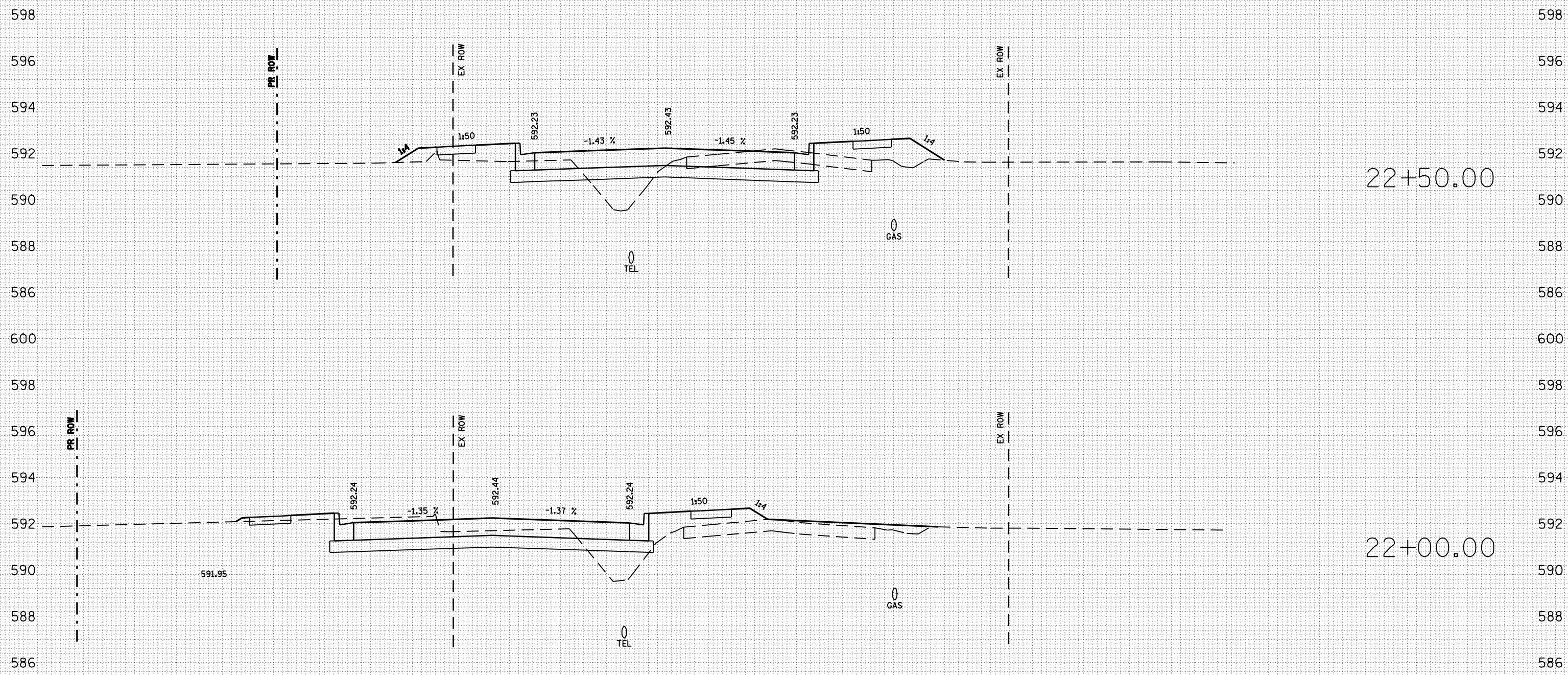
BY	DATE



F.A. RTE.	SECTION	COUNTY	TOTAL SHEETS	SHEET NO.
•	••	SANGAMON	363	358
STA. 22+00.00		TO STA. 22+50.00		
FED. ROAD DIST. NO. ILLINOIS FED. AID PROJECT				
CONTRACT NO. 72088				
• F.A.I. 72, F.A.P. 67, F.A.P. 75 & F.A.P. 668				
•• D-6 SPFLD-CLRLAKE DIRKSEN 2002				

BY	DATE

BY	DATE

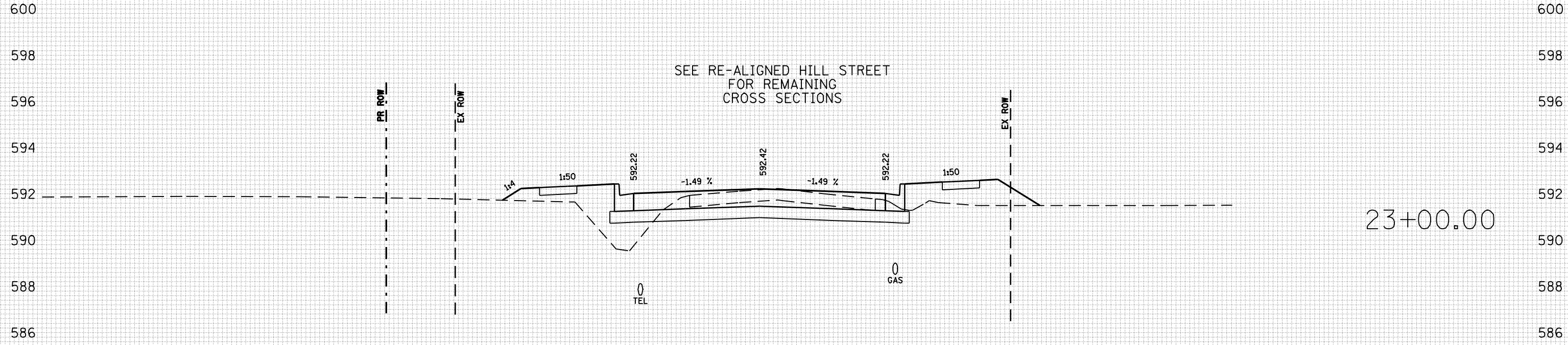


75 70 65 60 55 50 45 40 35 30 25 20 15 10 5 0 5 10 15 20 25 30 35 40 45 50 55 60 65 70 75

F.A. RTE.	SECTION	COUNTY	TOTAL SHEETS	SHEET NO.
•	••	SANGAMON	363	359
STA. 23+00.00		TO STA. 23+00.00		
FED. ROAD DIST. NO. ILLINOIS FED. AID PROJECT				
CONTRACT NO. 72088				
• F.A.I. 72, F.A.P. 67, F.A.P. 75 & F.A.P. 668				
•• D-6 SPFLD-CLRLAKE DIRKSEN 2002				

BY	DATE

BY	DATE

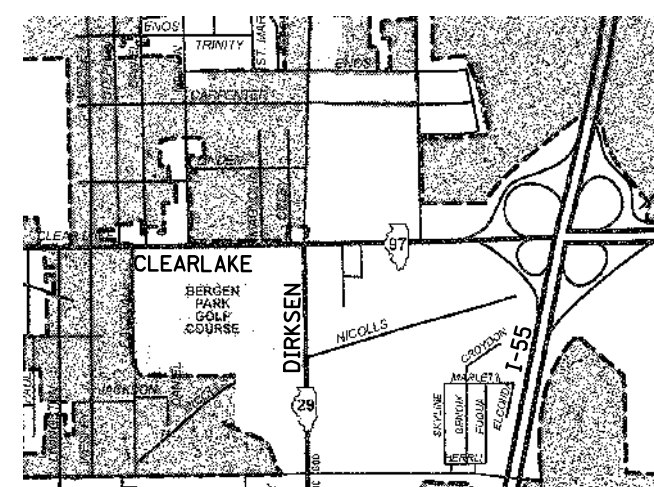
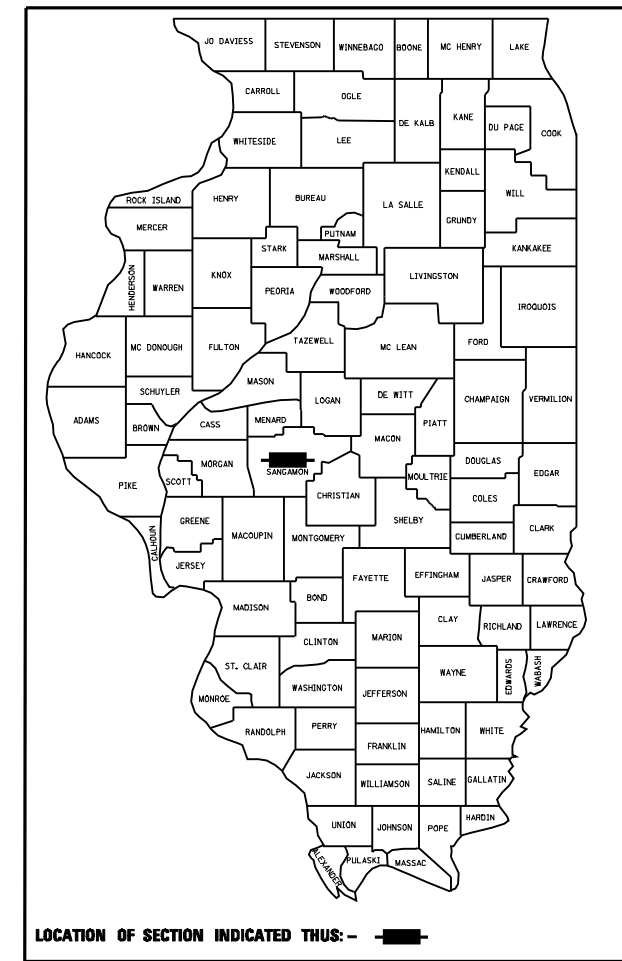


STATE OF ILLINOIS
DEPARTMENT OF TRANSPORTATION
DIVISION OF HIGHWAYS
PLANS FOR PROPOSED
FEDERAL AID HIGHWAY

F.A.P. ROUTE 67
SECTION (19X-3)R
PROJECT R-96-028-01
RIGHT OF WAY PLAN
SANGAMON COUNTY
JOB NO. R-96-028-01

INDEX OF PARCEL NUMBERS

SHEET NO. 2	SHEET NO. 3	SHEET NO. 4
6281109A	6281101TE	6281126A
6281109B	6281102	6281126B
6281109TE-1	6281102TE-1	6281126TE
6281109TE-2	6281102TE-2	6281127
6281110TE	6281103	6281127TE
6281111PE	6281103TE	6281128
6281111TE-1	6281104	6281128PE
6281111TE-2	6281104TE-1	6281128TE
6281113	6281104TE-2	6281129TE
6281114A	6281105TE	
6281114B	6281106	
6281114C	6281106TE	
6281114TE-1	6281107	
6281114TE-2	6281107PE	
6281114TE-3	6281107TE	
6281114TE-4	6281108	
6281114TE-5	6281108PE-1	
6281117	6281108PE-2	
6281117TE	6281108TE	
6281118		
6281119		
6281119TE		
6281120		
6281121		
6281124A		
6281124B		
6281124TE-1		
6281124TE-2		
6281125A		
6281125B		
6281125C		
6281125TE-1		
6281125TE-2		
6281125TE-3		



LOCATION MAP

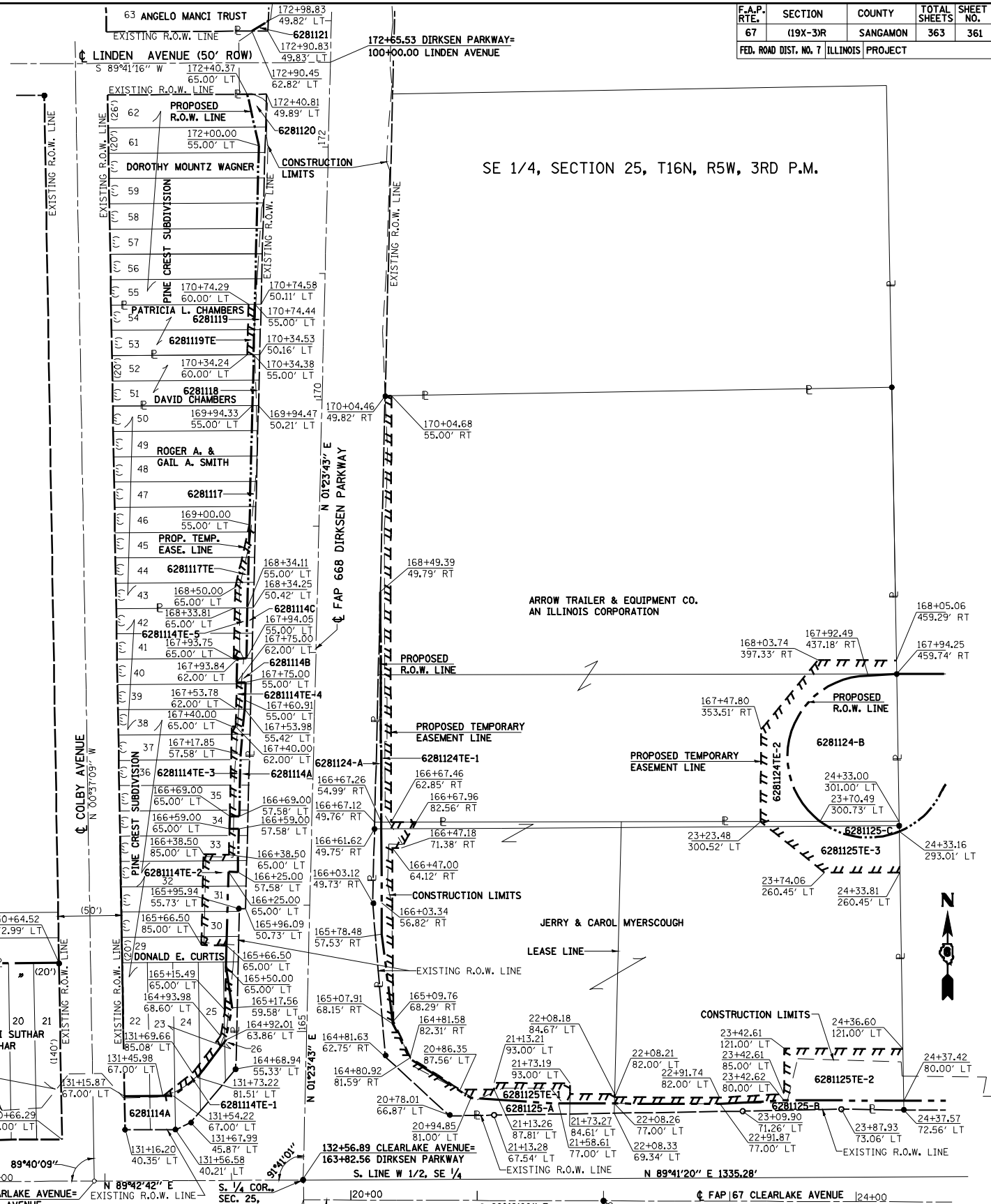
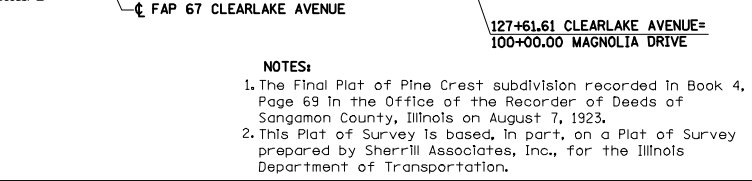
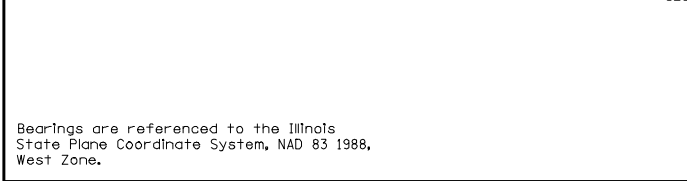
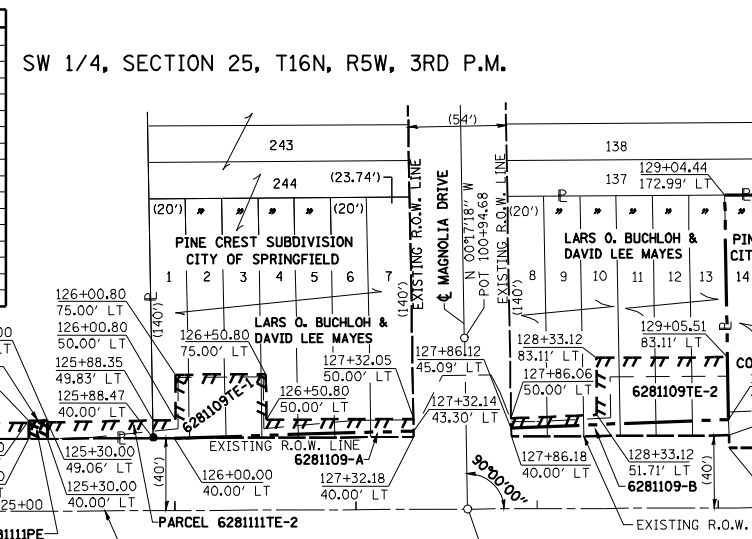
————— **LEGEND** —————

- () = Record Measurement
- = Found Iron Pin or Pipe
- ⌞ = Property Line
- ↔ = Same Ownership
- = Proposed R.O.W. Line
- ////// = Proposed Permanent Easement Line
- ||||| = Proposed Temporary Easement Line

STATE OF ILLINOIS	
DEPARTMENT OF TRANSPORTATION	
DIVISION OF HIGHWAYS	
SUBMITTED _____	20 _____
DISTRICT ENGINEER	
EXAMINED _____	20 _____
ENGINEER OF PLANS AND CONTRACTS	
PASSED _____	20 _____
ENGINEER OF DESIGN	
APPROVED _____	20 _____
DIRECTOR OF HIGHWAYS	
APPROVED _____	20 _____
SECRETARY OF DEPARTMENT OF TRANSPORTATION	

PARCEL NO.	LOT NO.	OWNER	TOTAL AREA SQ. FT.	AREA TAKEN SQ. FT.	REMAINING AREA SQ. FT.	EASEMENT AREA SQ. FT.
SW 1/4, SECTION 25, T16N, R5W, 3rd P.M., PINE CREST SUBDIVISION TO CITY OF SPRINGFIELD						
6281110TE	NONE	GRANT F. MUELLER	NA	NA	NA	331
6281111TE-1	NONE	NELL B. MUELLER	NA	NA	NA	1982
6281111TE-2	NONE	NELL B. MUELLER	NA	NA	NA	552
6281111PE	NONE	NELL B. MUELLER	NA	NA	NA	100
6281109A	PT. OF LOTS 1,2,3,4,5,6 & 7	LARS O. BUCHLOH & DAVID LEE MAYES	34,932	218	33,868	NA
6281109B	PT. OF LOTS 8,9,10,11,12, & 13	LARS O. BUCHLOH & DAVID LEE MAYES	34,932	846	33,868	NA
6281109TE-1	PT. OF LOTS 1,2,3,4,5,6 & 7	LARS O. BUCHLOH & DAVID LEE MAYES	NA	NA	NA	2468
6281109TE-2	PT. OF LOTS 8,9,10,11,12, & 13	LARS O. BUCHLOH & DAVID LEE MAYES	NA	NA	NA	2796
6281113	PT. OF LOTS 14,15,16,17, 18,19,20 & 21	ISHWARBHAI MULAJBAHI SUTHAR AND MANIBAHEN I. SUTHAR	22,418	22,418	0	NA
6281114A	PT. OF LOTS 22,23,24,25,26,29, 30,31,32,33,34,35,36,37 & 38	DONALD E. CURTIS	41,965	4,679	34,129	NA
6281114B	PT. OF LOTS 39 & 40	DONALD E. & JOETTE R. CURTIS	41,965	1,679	34,129	NA
6281114C	PT. OF LOTS 41 & 42	DONALD E. CURTIS	41,965	1,478	34,129	NA
6281114TE-1	PT. OF LOTS 22,23,24,25, & 26	DONALD E. CURTIS	NA	NA	NA	530
6281114TE-2	PT. OF LOTS 29, 30,31, 32, 33 & 34	DONALD E. CURTIS	NA	NA	NA	1692
6281114TE-3	PT. OF LOTS 34,35,36,37 & 38	DONALD E. CURTIS	NA	NA	NA	627
6281114TE-4	PT. OF LOTS 39 & 40	DONALD E. & JOETTE R. CURTIS	NA	NA	NA	146
6281114TE-5	PT. OF LOTS 41 & 42	DONALD E. CURTIS	NA	NA	NA	401
6281117	PT. OF LOTS 43,44,45,46,47, 48,49 & 50	ROGER A. & GAIL A. SMITH	22,424	5,273	17,187	NA
6281117TE	PT. OF LOTS 43,44,45 & 46	ROGER A. & GAIL A. SMITH	NA	NA	NA	410
6281118	PT. OF LOTS 51 & 52	DAVID CHAMBERS	5,606	1,141	4,465	NA
6281119	PT. OF LOTS 53 & 54	PATRICIA L. CHAMBERS	5,606	1,074	4,532	NA
6281119TE	PT. OF LOTS 53 & 54	PATRICIA L. CHAMBERS	NA	NA	NA	200
6281120	PT. OF LOTS 55,56,57,58, 59,60,61 & 62	DOROTHY MOUNTZ WAGNER	23,266	3,939	19,327	NA
6281121	PT. OF LOT 63	ANGELO MANCI TRUST	39,714	52	39,662	NA
SE 1/4, SECTION 25, T16N, R5W, 3rd P.M.						
6281124A	NONE	ARROW TRAILER & EQUIPMENT CO. AN ILLINOIS CORPORATION	138,811	477	129,522	NA
6281124B	NONE	ARROW TRAILER & EQUIPMENT CO. AN ILLINOIS CORPORATION	138,811	8,812	129,522	NA
6281124TE-1	NONE	ARROW TRAILER & EQUIPMENT CO. AN ILLINOIS CORPORATION	NA	NA	NA	2466
6281124TE-2	NONE	ARROW TRAILER & EQUIPMENT CO. AN ILLINOIS CORPORATION	NA	NA	NA	3766
6281125A	NONE	JERRY AND CAROL MYERSCOUGH	94,073	3,631	88,210	NA
6281125B	NONE	JERRY AND CAROL MYERSCOUGH	94,073	1,627	88,210	NA
6281125C	NONE	JERRY AND CAROL MYERSCOUGH	94,073	605	88,210	NA
6281125TE-1	NONE	JERRY AND CAROL MYERSCOUGH	NA	NA	NA	2750
6281125TE-2	NONE	JERRY AND CAROL MYERSCOUGH	NA	NA	NA	4543
6281125TE-3	NONE	JERRY AND CAROL MYERSCOUGH	NA	NA	NA	2813

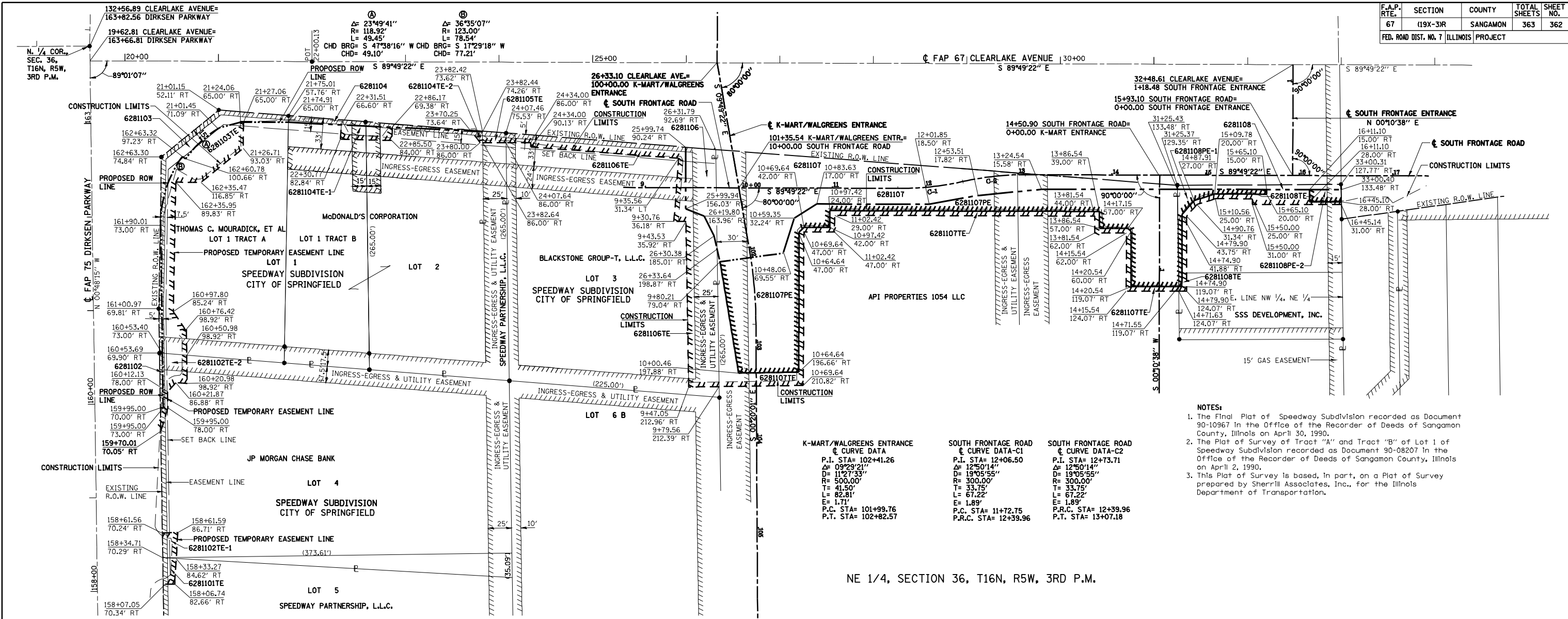
REASONS FOR TEMPORARY EASEMENTS
6281110TE SIDEWALK CONSTRUCTION & GRADING
6281111TE-1 SIDEWALK CONSTRUCTION & GRADING
6281111TE-2 SIDEWALK CONSTRUCTION & GRADING
6281109TE-1 ENTRANCE & SIDEWALK CONSTRUCTION & GRADING
6281109TE-2 ENTRANCE & SIDEWALK CONSTRUCTION & GRADING
6281114TE-1 RETAINING WALL CONSTRUCTION
6281114TE-2 ENTRANCE CONSTRUCTION
6281114TE-3 GRADING & SHAPING
6281114TE-4 CURB & GUTTER CONSTRUCTION
6281114TE-5 SIDEWALK CONSTRUCTION & GRADING
6281117TE SIDEWALK CONSTRUCTION & GRADING
6281119TE GRADING
6281124TE-1 SIDEWALK & CURB CONSTRUCTION
6281124TE-2 FRONTAGE ROAD CONSTRUCTION
6281125TE-1 CONSTRUCTION OF ENTRANCE, SIDEWALKS & CURBS
6281125TE-2 CONSTRUCTION OF ENTRANCE, SIDEWALKS & CURBS
6281125TE-3 FRONTAGE ROAD CONSTRUCTION



Bearings are referenced to the Illinois State Plane Coordinate System, NAD 83 1988, West Zone.

NOTES:
 1. The Final Plat of Pine Crest subdivision recorded in Book 4, Page 69 in the Office of the Recorder of Deeds of Sangamon County, Illinois on August 7, 1923.
 2. This Plat of Survey is based, in part, on a Plat of Survey prepared by Sherrill Associates, Inc., for the Illinois Department of Transportation.

RIGHT OF WAY PLANS
 ROUTE FAP 67 (CLEARLAKE)
 SECTION (19X-3R)
 PROJECT
 COUNTY SANGAMON
 JOB NO. R-96-028-01
 STA TO STA
 SCALE: 1"=50'
 SHEET NO. 2 OF 4



- NOTES:**
- The Final Plat of Speedway Subdivision recorded as Document 90-10967 in the Office of the Recorder of Deeds of Sangamon County, Illinois on April 30, 1990.
 - The Plat of Survey of Tract "A" and Tract "B" of Lot 1 of Speedway Subdivision recorded as Document 90-08207 in the Office of the Recorder of Deeds of Sangamon County, Illinois on April 2, 1990.
 - This Plat of Survey is based, in part, on a Plat of Survey prepared by Sherrill Associates, Inc., for the Illinois Department of Transportation.

K-MART/WALGREENS ENTRANCE
 CURVE DATA
 P.I. STA= 102+41.26
 Δ= 09°29'21"
 D= 11°27'33"
 R= 500.00'
 T= 41.50'
 L= 82.81'
 E= 1.71'
 P.C. STA= 101+99.76
 P.T. STA= 102+82.57

SOUTH FRONTAGE ROAD
 CURVE DATA-C1
 P.I. STA= 12+06.50
 Δ= 12°50'14"
 D= 19°05'55"
 R= 300.00'
 T= 33.75'
 L= 67.22'
 E= 1.89'
 P.C. STA= 11+72.75
 P.R.C. STA= 12+39.96

SOUTH FRONTAGE ROAD
 CURVE DATA-C2
 P.I. STA= 12+73.71
 Δ= 12°50'14"
 D= 19°05'55"
 R= 300.00'
 T= 33.75'
 L= 67.22'
 E= 1.89'
 P.C. STA= 12+39.96
 P.T. STA= 13+07.18

NE 1/4, SECTION 36, T16N, R5W, 3RD P.M.

PARCEL NO.	LOT NO.	OWNER	TOTAL AREA SQ. FT.	AREA TAKEN SQ. FT.	REMAINING AREA SQ. FT.	EASEMENT AREA SQ. FT.
NE 1/4, SECTION 36, T16N, R5W, 3rd P.M., SPEEDWAY SUBDIVISION TO CITY OF SPRINGFIELD						
6281101TE	LOT 5	SPEEDWAY PARTNERSHIP, L.L.C.	NA	NA	NA	362
6281102	LOT 4	JP MORGAN CHASE BANK	82,198	178	82,020	NA
6281102TE-1	LOTS 4 & 5	JP MORGAN CHASE BANK	NA	NA	NA	425
6281102TE-2	LOT 4	JP MORGAN CHASE BANK	NA	NA	NA	1069
6281103	PART OF LOT 1	THOMAS C. MOURADICK, ET AL	33,977	2,584	31,393	NA
6281103TE	PART OF LOT 1	THOMAS C. MOURADICK, ET AL	NA	NA	NA	5,563
6281104	PART OF LOTS 1 & 2	MCDONALD'S CORPORATION	52,185	703	51,482	NA
6281104TE-1	PART OF LOTS 1 & 2	MCDONALD'S CORPORATION	NA	NA	NA	846
6281104TE-2	PART OF LOTS 1 & 2	MCDONALD'S CORPORATION	NA	NA	NA	88
6281105TE	PART OF LOT 2	SPEEDWAY PARTNERSHIP, L.L.C.	NA	NA	NA	286
6281106	PART OF LOT 3	BLACKSTONE GROUP-T, L.L.C.	59,329	2,472	56,857	NA
6281106TE	PART OF LOT 3	BLACKSTONE GROUP-T, L.L.C.	NA	NA	NA	8,856
6281107	NONE	API PROPERTIES 1054 LLC	520,106	20,539	499,567	NA
6281107PE	NONE	API PROPERTIES 1054 LLC	NA	NA	NA	21,224
6281107TE	NONE	API PROPERTIES 1054 LLC	NA	NA	NA	5,987
6281108	NONE	SSS DEVELOPEMENT, INC.	43,516	861	42,655	NA
6281108PE-1	NONE	SSS DEVELOPEMENT, INC.	NA	NA	NA	1,149
6281108PE-2	NONE	SSS DEVELOPEMENT, INC.	NA	NA	NA	441
6281108TE	NONE	SSS DEVELOPEMENT, INC.	NA	NA	NA	1,826

REASONS FOR TEMPORARY EASEMENTS
6281101TE ENTRANCE CONSTRUCTION
6281102TE-1 ENTRANCE CONSTRUCTION
6281102TE-2 ENTRANCE CONSTRUCTION
6281103TE ENTRANCE CONSTRUCTION
6281104TE-1 ENTRANCE CONSTRUCTION
6281104TE-2 ENTRANCE CONSTRUCTION
6281105TE ENTRANCE CONSTRUCTION
6281106TE SIDEWALK CONSTRUCTION & GRADING
6281107TE PARKING LOT & ENTRANCE RECONSTRUCTION
6281108TE PARKING LOT & ENTRANCE RECONSTRUCTION

RIGHT OF WAY PLANS

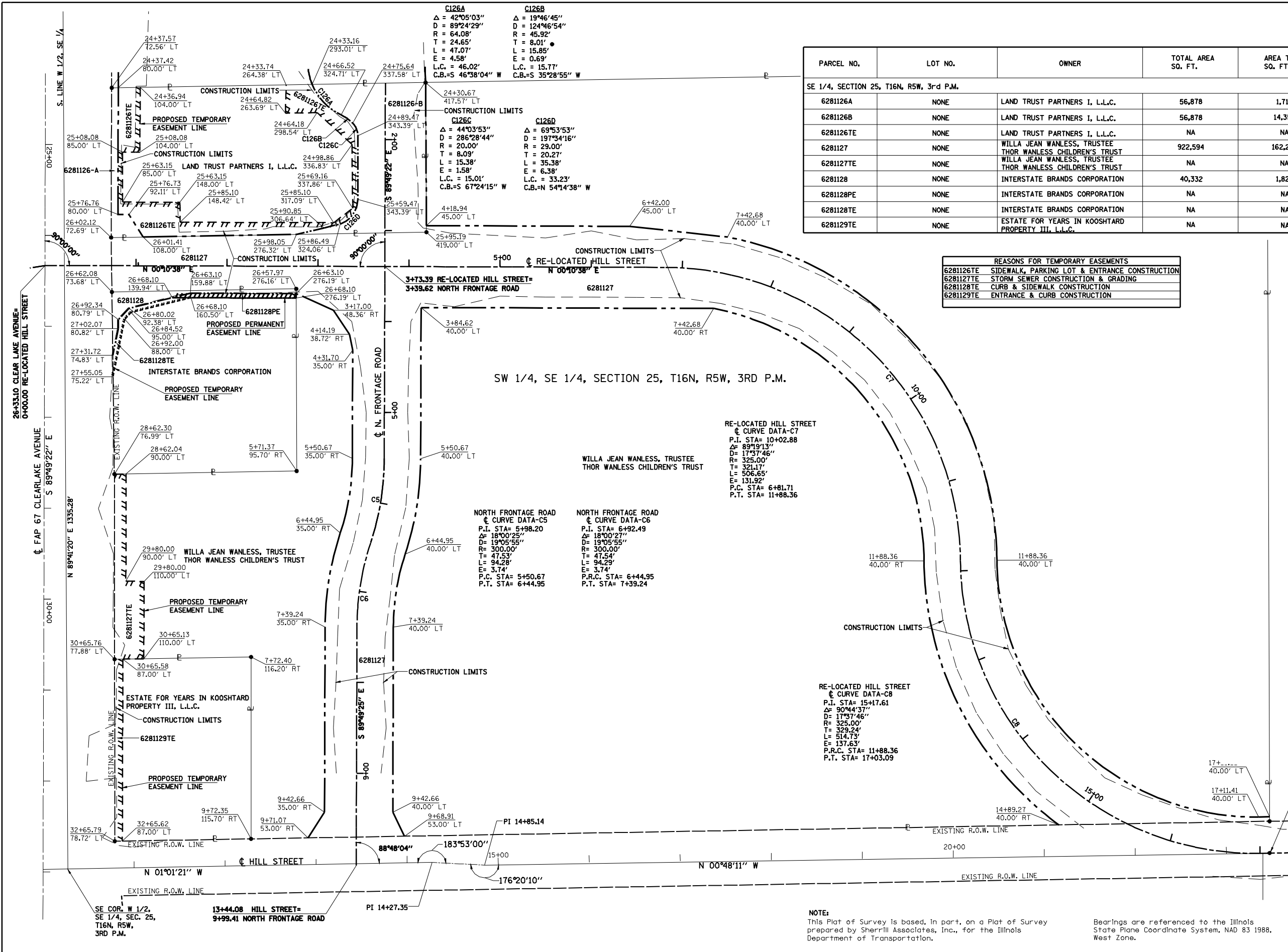
ROUTE FAP 67 (CLEARLAKE)
 SECTION (19X-3R)
 PROJECT
 COUNTY SANGAMON
 JOB NO. R-96-028-01
 STA TO STA
 SCALE: 1"=50'

SHEET NO. 3 OF 4

Bearings are referenced to the Illinois State Plane Coordinate System, NAD 83 1988, West Zone.

PARCEL NO.	LOT NO.	OWNER	TOTAL AREA SQ. FT.	AREA TAKEN SQ. FT.	REMAINING AREA SQ. FT.	EASEMENT AREA SQ. FT.
SE 1/4, SECTION 25, T16N, R5W, 3rd P.M.						
6281126A	NONE	LAND TRUST PARTNERS I, L.L.C.	56,878	1,716	40,805	NA
6281126B	NONE	LAND TRUST PARTNERS I, L.L.C.	56,878	14,357	40,805	NA
6281126TE	NONE	LAND TRUST PARTNERS I, L.L.C.	NA	NA	NA	8,748
6281127	NONE	WILLA JEAN WANLESS, TRUSTEE THOR WANLESS CHILDREN'S TRUST	922,594	162,284	760,310	NA
6281127TE	NONE	WILLA JEAN WANLESS, TRUSTEE THOR WANLESS CHILDREN'S TRUST	NA	NA	NA	4,263
6281128	NONE	INTERSTATE BRANDS CORPORATION	40,332	1,821	38,511	NA
6281128PE	NONE	INTERSTATE BRANDS CORPORATION	NA	NA	NA	631
6281128TE	NONE	INTERSTATE BRANDS CORPORATION	NA	NA	NA	632
6281129TE	NONE	ESTATE FOR YEARS IN KOOSHTARD PROPERTY III, L.L.C.	NA	NA	NA	1,740

REASONS FOR TEMPORARY EASEMENTS	
6281126TE	SIDEWALK, PARKING LOT & ENTRANCE CONSTRUCTION
6281127TE	STORM SEWER CONSTRUCTION & GRADING
6281128TE	CURB & SIDEWALK CONSTRUCTION
6281129TE	ENTRANCE & CURB CONSTRUCTION



RIGHT OF WAY PLANS

ROUTE FAP 67 (CLEARLAKE)
SECTION (19X-3R)
PROJECT
COUNTY SANGAMON
JOB NO. R-96-028-01
STA TO STA
SCALE: 1"=50'

NE COR. SW 1/4,
SE 1/4, SEC. 25,
T16N, R5W,
3RD P.M.

NOTE:
This Plat of Survey is based, in part, on a Plat of Survey prepared by Sherrill Associates, Inc., for the Illinois Department of Transportation.

Bearings are referenced to the Illinois State Plane Coordinate System, NAD 83 1988, West Zone.

SHEET NO. 4 OF 4