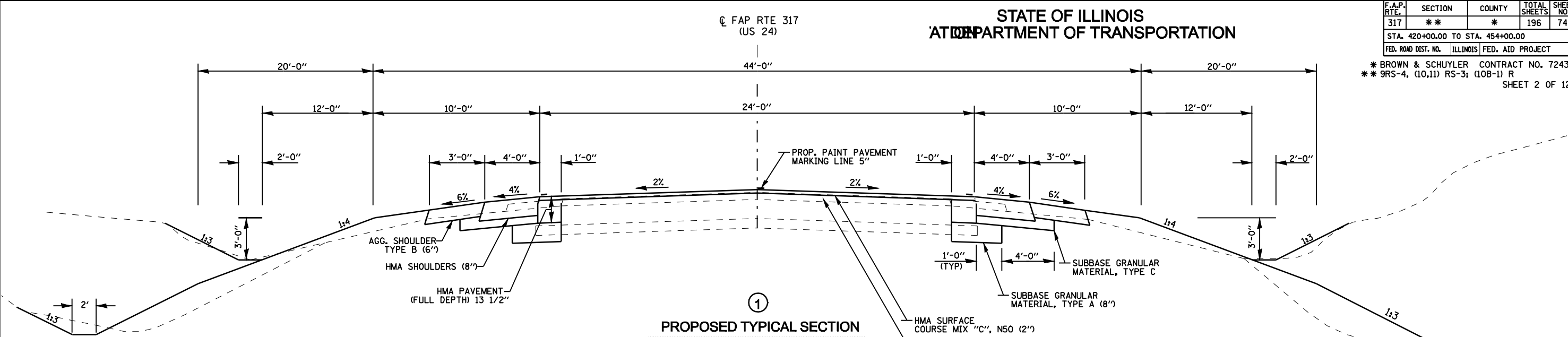


STATE OF ILLINOIS
DEPARTMENT OF TRANSPORTATION

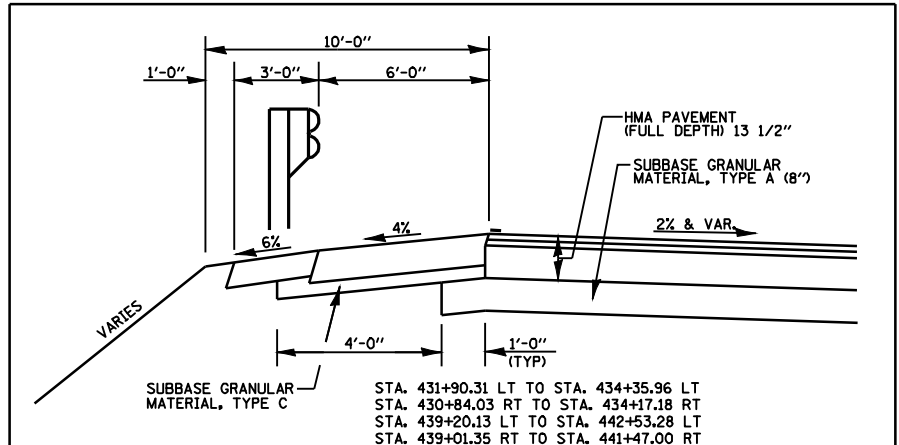
F.A.P. RTE.	SECTION	COUNTY	TOTAL SHEETS	SHEET NO.
317	**	*	196	74
STA. 420+00.00 TO STA. 454+00.00				
FED. ROAD DIST. NO. ILLINOIS FED. AID PROJECT				

* BROWN & SCHUYLER CONTRACT NO. 72432
** 9RS-4, (10,11) RS-3; (10B-1) R
SHEET 2 OF 123

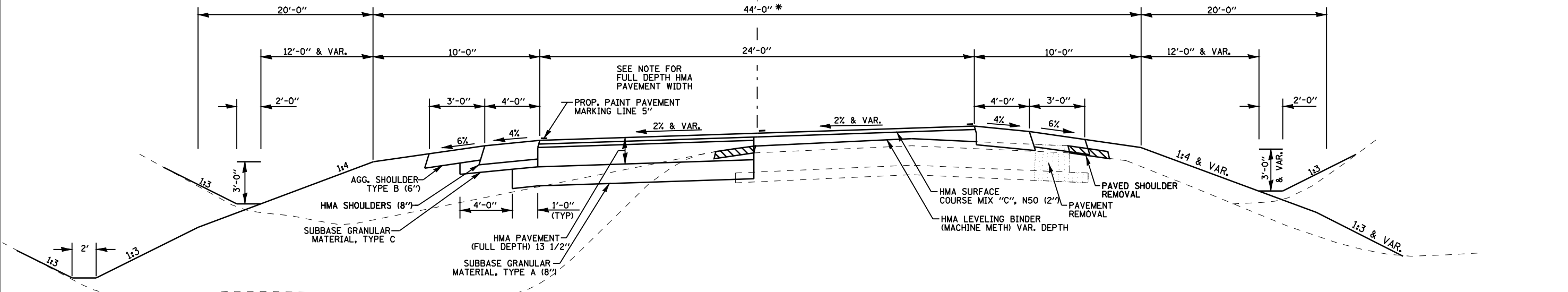


①
PROPOSED TYPICAL SECTION
STA. 420+00 TO STA. 420+14.24
STA. 453+67.28 TO STA. 454+00

- NOTE:** FULL DEPTH WIDTH VARIES 1'-0" TO 24'-0"
STA 420+00 TO STA 427+21.02 AND STA 449+82 TO STA 454+00
- NOTE:** HOT-MIX ASPHALT (HMA) PAVEMENT (FULL-DEPTH) 13 1/2"
- 2" LAYER-HMA SURFACE COURSE (TOPLIFT)
- 2 1/4" LAYER-HMA TOP BINDER LIFT
- 9 1/4" LAYER-HMA LOWER BINDER LIFT
(SEE MIXTURE REQUIREMENTS TABLE)
- NOTE:** SUBBASE GRANULAR MATERIAL, TYPE A IS 8" THICK EXCEPT BETWEEN STA. 439+25 AND STA. 444+25 WHERE IT IS 4" THICK. THE LIMITS OF 4 INCH SUBBASE GRANULAR MATERIAL, TYPE A ARE ESTIMATED AND MAY BE ADJUSTED TO MATCH THE ACTUAL LIMITS OF ROCK ENCOUNTERED.
- NOTE:** TOPSOIL EXCAVATION WILL BE FROM THE AREAS INDICATED ON THE CROSS SECTIONS. TOPSOIL PLACEMENT 4" WILL BE PLACED AS SHOWN ON THE CROSS SECTIONS.



STA. 431+90.31 LT TO STA. 434+35.96 LT
STA. 430+84.03 RT TO STA. 434+17.18 RT
STA. 439+20.13 LT TO STA. 442+53.28 LT
STA. 439+01.35 RT TO STA. 441+47.00 RT



②
PROPOSED TYPICAL SECTION
STA. 420+14.24 TO STA. 427+21.02
STA. 446+61.38 TO STA. 453+67.28

STATION EQUATION
STA. 452+80.20 (BK) =
STA. 452+78.48 (AH)

* IN AREAS OF SUPERELEVATION AND WHERE EXISTING PAVEMENT IS TO REMAIN A BINDER COURSE WILL BE USED TO ESTABLISH THE REQUIRED CROSS SLOPE.

SUPERELEVATION TABLE

P.I. STA.	SE RATE	SUPER ATTAINED	FULL SUPER	SUPER REMOVED
CURVE 1423+94.36	0.020 FT/FT	420+14.24 TO 421+20.80	421+20.80 TO 426+67.74	426+67.74 TO 427+21.02
CURVE 2430+49.42	0.020 FT/FT	427+22.56 TO 427+75.84	427+75.84 TO 433+22.82	433+22.82 TO 434+29.38
CURVE 3443+34.36	0.020 FT/FT	439+54.30 TO 440+60.80	440+60.80 TO 446+07.68	446+07.68 TO 446+60.96
CURVE 4449+89.14	0.020 FT/FT	446+61.38 TO 447+15.66	447+15.66 TO 452+62.44	452+62.44 TO 453+67.28

PROPOSED TYPICAL SECTIONS
SHEET 1 OF 2
US 24 OVER LAMOINE RIVER
F.A.P. RTE 317 (US RTE 24)
SECTION 9RS-4, (10,11) RS-3; (10B-1) R
BROWN & SCHUYLER COUNTY