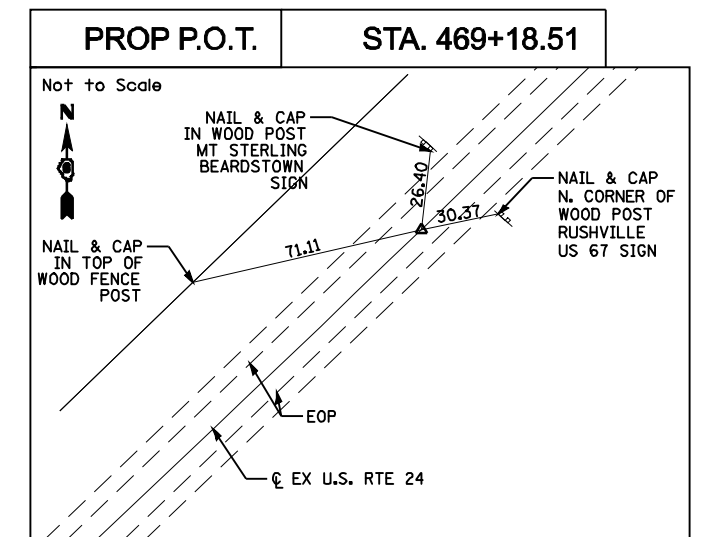
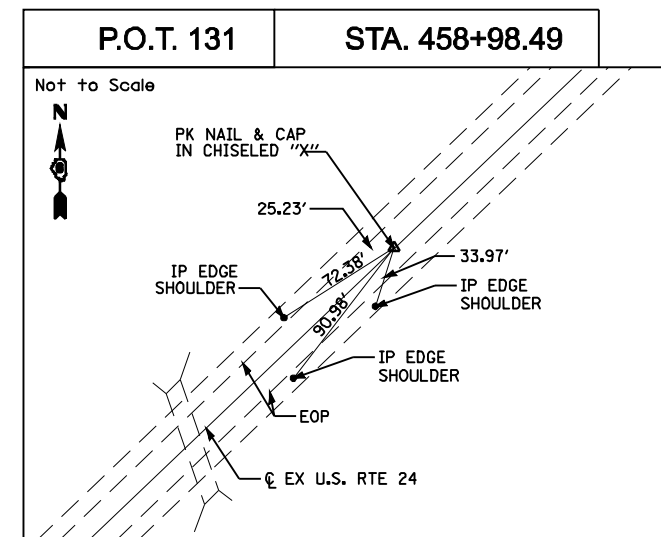
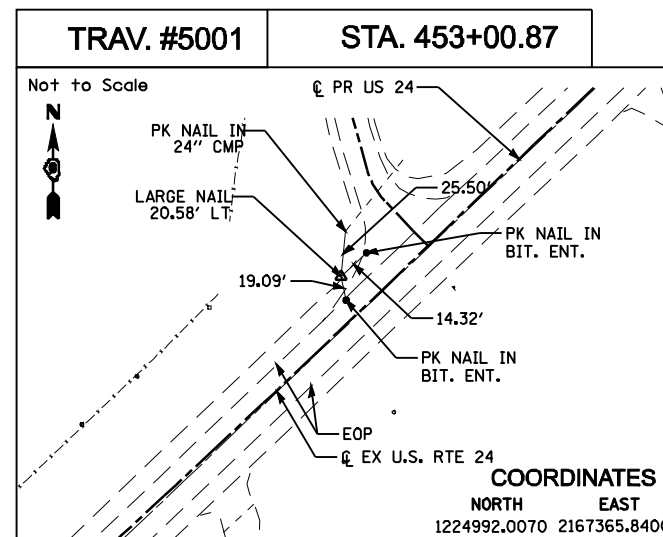
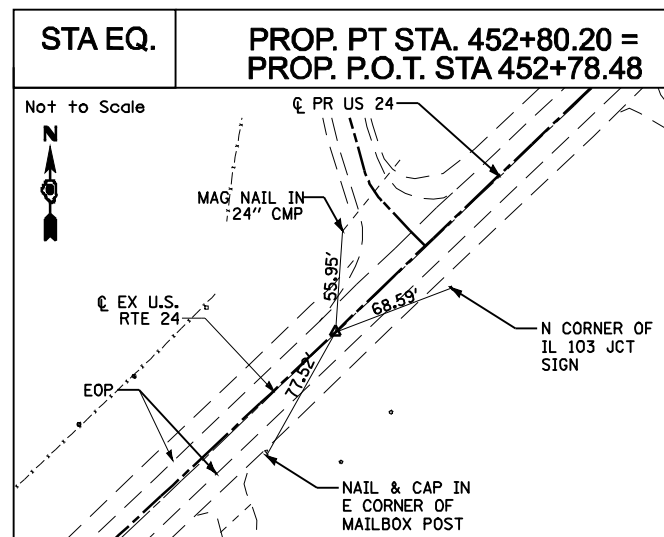
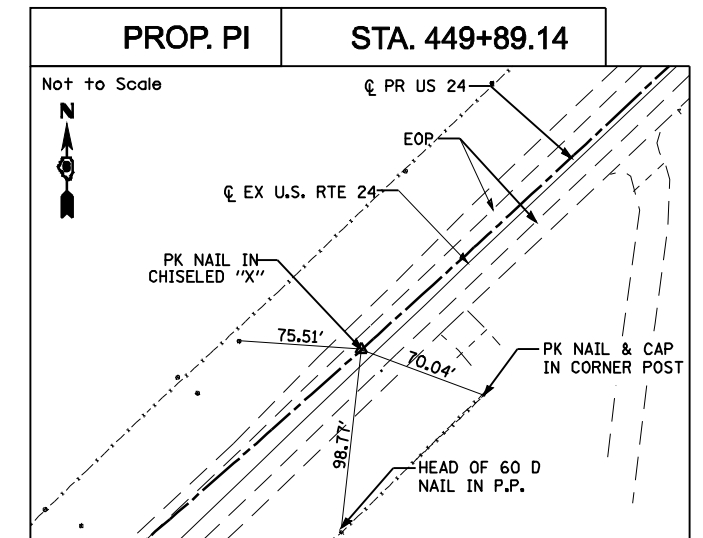
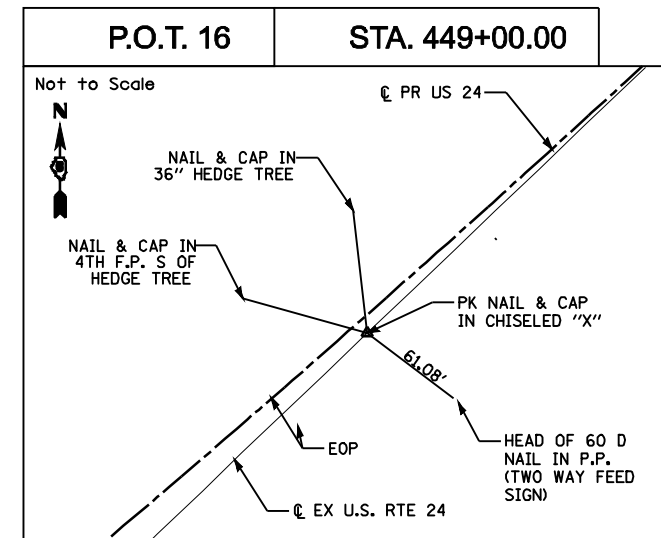
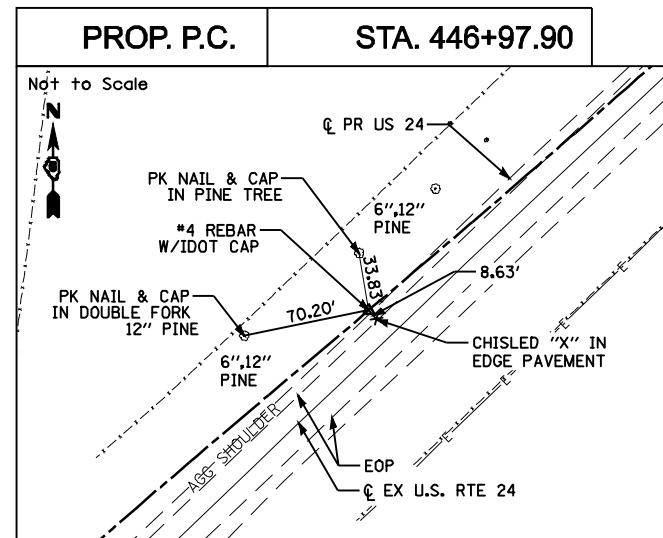
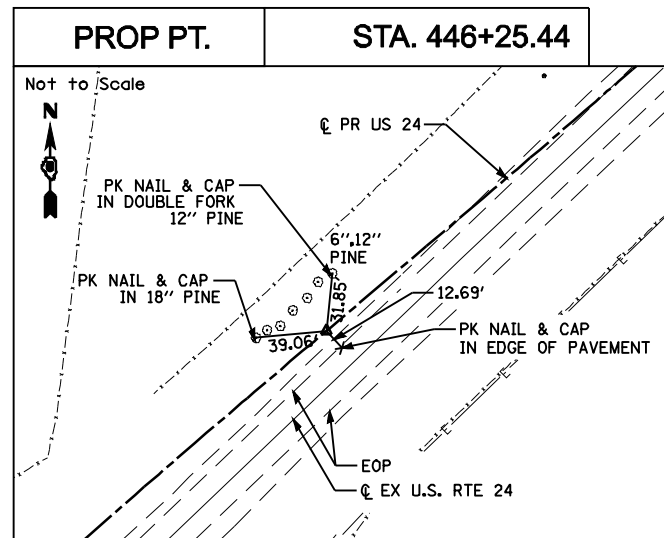


STATE OF ILLINOIS
DEPARTMENT OF TRANSPORTATION

F.A.P. RTE.	SECTION	COUNTY	TOTAL SHEETS	SHEET NO.
317	**	*	196	78

STA. 420+00.00 TO STA. 454+00.00
FED. ROAD DIST. NO. ILLINOIS FED. AID PROJECT
* BROWN & SCHUYLER CONTRACT NO. 72432
** 9RS-4, (10,11) RS-3; (10B-1) R
SHEET 6 OF 123



HORIZONTAL & VERTICAL CONTROL TIE POINTS
SHEET 3 OF 3
US 24 OVER LAMOINE RIVER
F.A.P. RTE 317 (US RTE 24)
SECTION 9RS-4, (10,11) RS-3; (10B-1) R
BROWN & SCHUYLER COUNTY