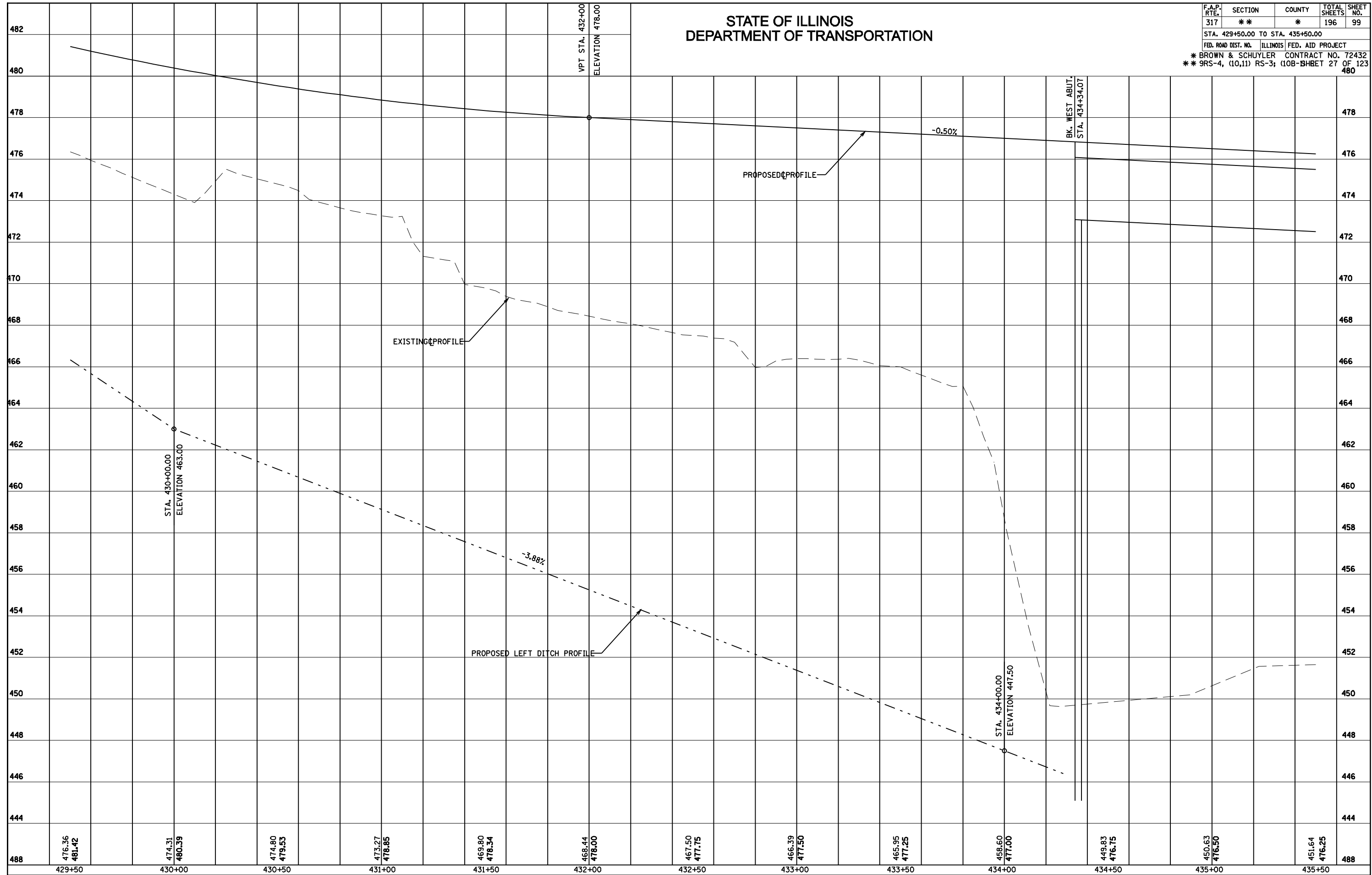


STATE OF ILLINOIS
DEPARTMENT OF TRANSPORTATION

F.A.P. RTE.	SECTION	COUNTY	TOTAL SHEETS	SHEET NO.
317	**	*	196	99
STA. 429+50.00 TO STA. 435+50.00				
FED. ROAD DIST. NO. ILLINOIS FED. AID PROJECT				
* BROWN & SCHUYLER CONTRACT NO. 72432				
** 9RS-4, (10,11) RS-3; (10B-BH) 27 OF 123				



PROFILE - STA. 429+50 TO STA. 435+50