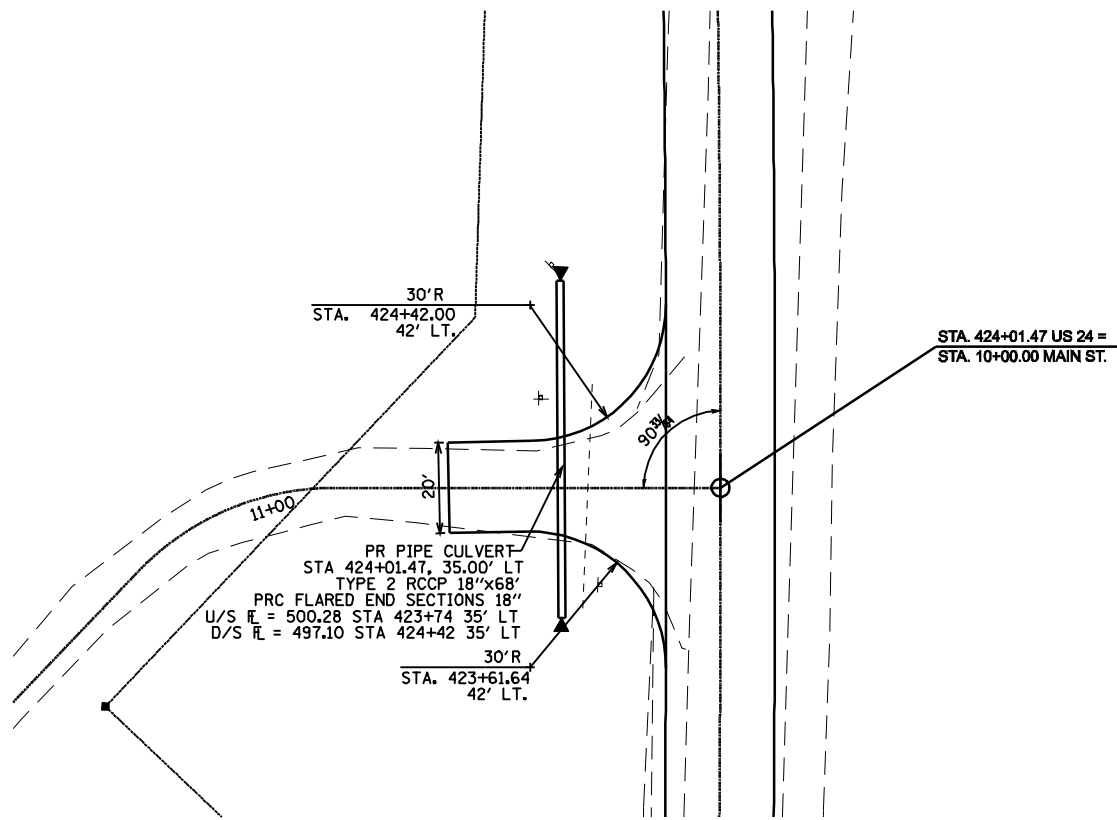


STATE OF ILLINOIS
DEPARTMENT OF TRANSPORTATION

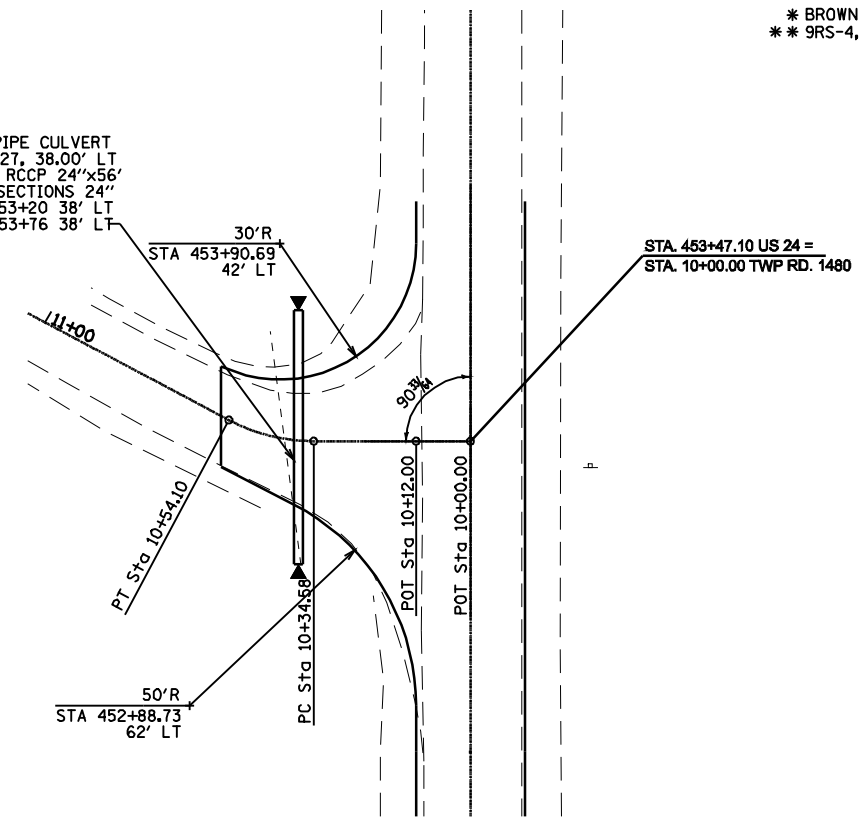
F.A.P. RTE.	SECTION	COUNTY	TOTAL SHEETS	SHEET NO.
317	**	*	196	114

STA. 420+00.00 TO STA. 454+00.00
FED. ROAD DIST. NO. ILLINOIS FED. AID PROJECT
* BROWN & SCHUYLER CONTRACT NO. 72432
** 9RS-4, (10,11) RS-3; (10B-1) R
SHEET 42 OF 123



PR PIPE CULVERT
STA 453+47.27, 38.00' LT
TYPE 1 RCCP 24"x56"
PRC FLARED END SECTIONS 24"
U/S E = 463.22 STA 453+20 38' LT
D/S E = 462.87 STA 453+76 38' LT

PROP. CURVE TWP1480-1
PI STA. = 10+44.54
 $\Delta = 27^\circ 58' 02''$ (RT)
D = 143' 14' 22"
R = 40.00'
T = 9.96'
L = 19.52'
E = 1.22'
e = -----
T.R. = -----
S.E. RUN = -----
P.C. STA. = 10+34.58
P.T. STA. = 10+54.10



MAIN ST.

TWP. RD. 1480

