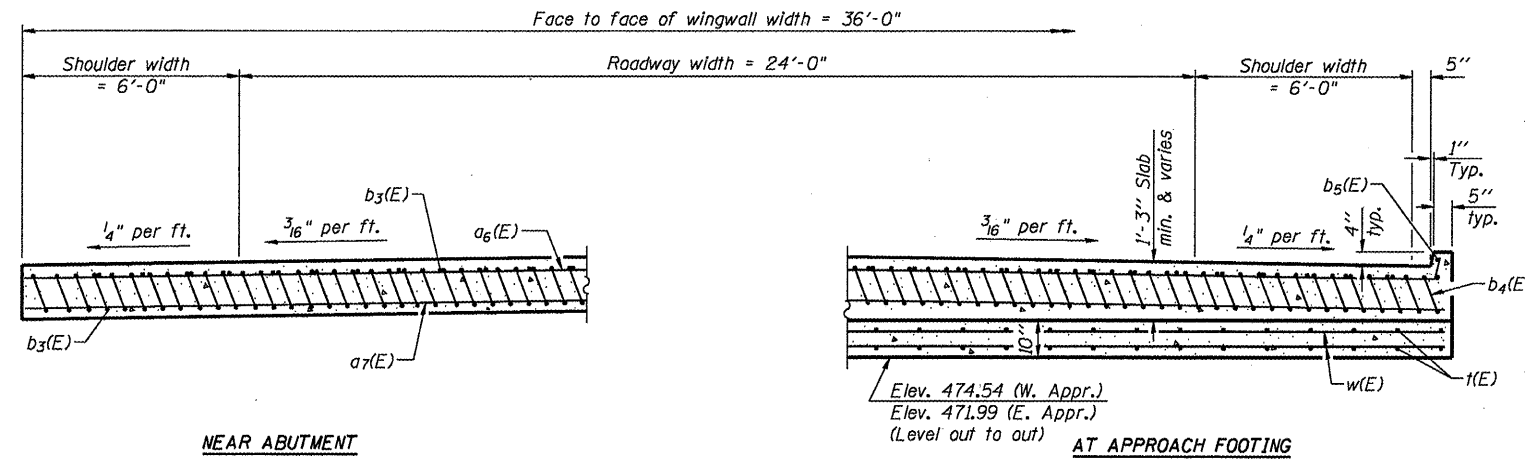
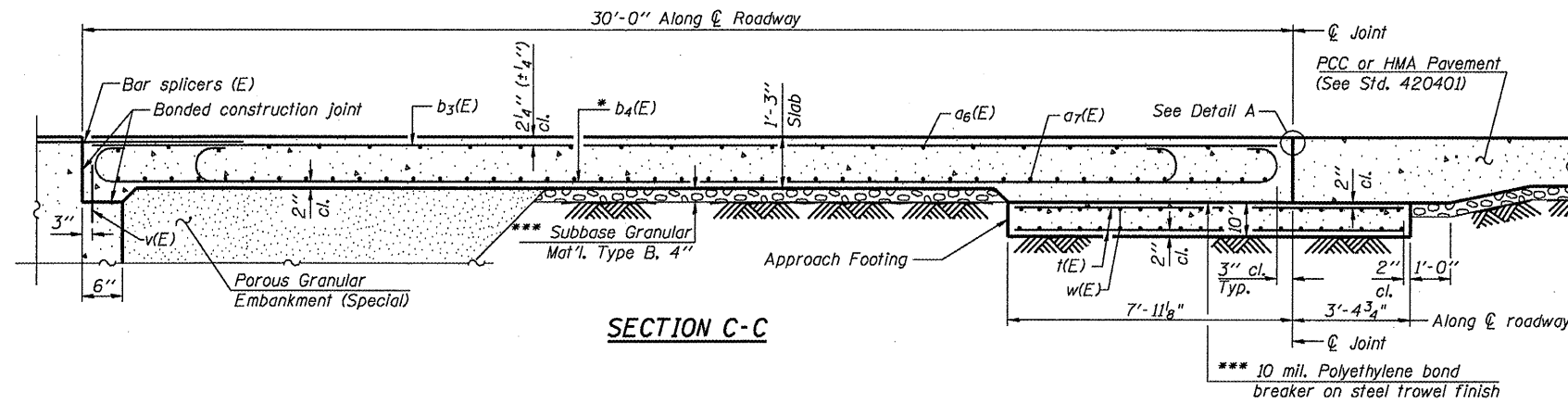


STATE OF ILLINOIS  
DEPARTMENT OF TRANSPORTATION

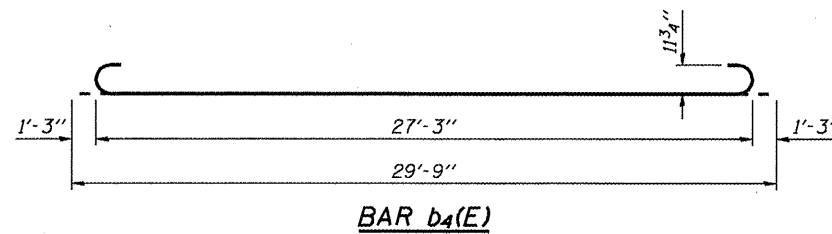
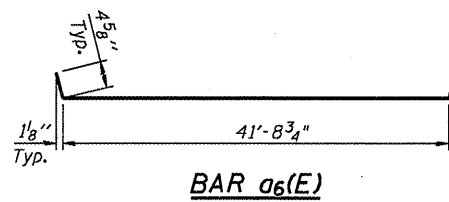
Notes:  
See sheet 10 of 29 for Detail A.  
Approach slab concrete shall be paid for as Concrete Superstructure.  
Approach footing concrete shall be paid for as Concrete Structures.  
Reinforcement shall be paid for as Reinforcement Bars, Epoxy Coated.  
For v(E) bar details, see sheet 19 of 29 and sheet 21 of 29.  
The approach footing maximum applied service bearing pressure (Q<sub>max</sub>) = 2.0 ksf.  
For bar splicer details, see sheet 24 of 29.  
Cost of excavation for approach footing included with Concrete Structures.  
For Porous Granular Embankment (Special) and drainage treatment details, see sheet 2 of 29.



\* Tilt #9 b<sub>4</sub>(E) bars as required to maintain clearance.  
\*\*\* Cost included with Concrete Superstructure.

TWO APPROACHES  
BILL OF MATERIAL

Bar	No.	Size	Length	Shape
a <sub>6</sub> (E)	50	#4	43'-1"	—
a <sub>7</sub> (E)	92	#5	40'-5"	—
b <sub>3</sub> (E)	72	#4	29'-8"	—
b <sub>4</sub> (E)	172	#9	29'-9"	—
b <sub>5</sub> (E)	4	#4	13'-0"	—
k(E)	152	#4	11'-0"	—
w(E)	80	#5	42'-6"	—
Concrete Superstructure		Cu. Yd.	104.1	
Concrete Structures		Cu. Yd.	26.4	
Reinforcement Bars, Epoxy Coated		Pound	28840	



BRIDGE APPROACH SLAB DETAILS-2  
STRUCTURE NO. 005-0500

 LIN ENGINEERING, LTD. Consulting Engineers Chattanooga, Illinois	SHEET NO. 11	F.A.P. RTE.	SECTION	COUNTY	TOTAL SHEETS	SHEET NO.
	29 SHEETS	317	(10B-1)R	BROWN/SCHUYLER	196	130
Designed By: ADB Checked By: MTH Date: 06/2009	Drawn By: A.F. File: 005-0500.DWG	CONTRACT NO. 72432		ILLINOIS FED. AID PROJECT		