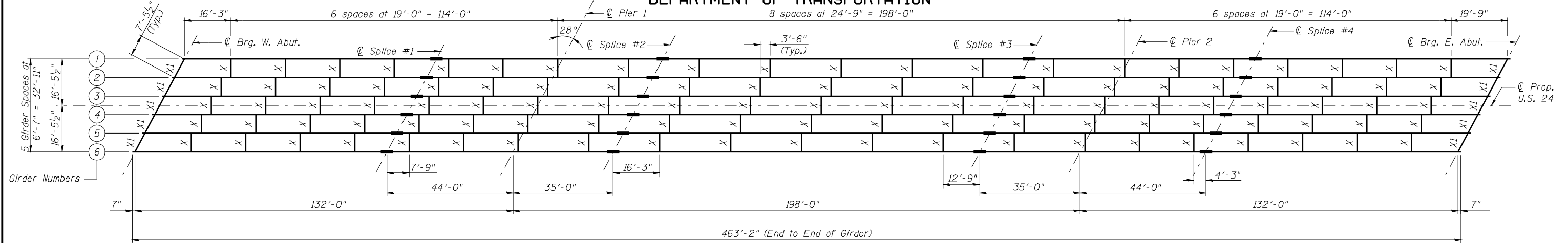
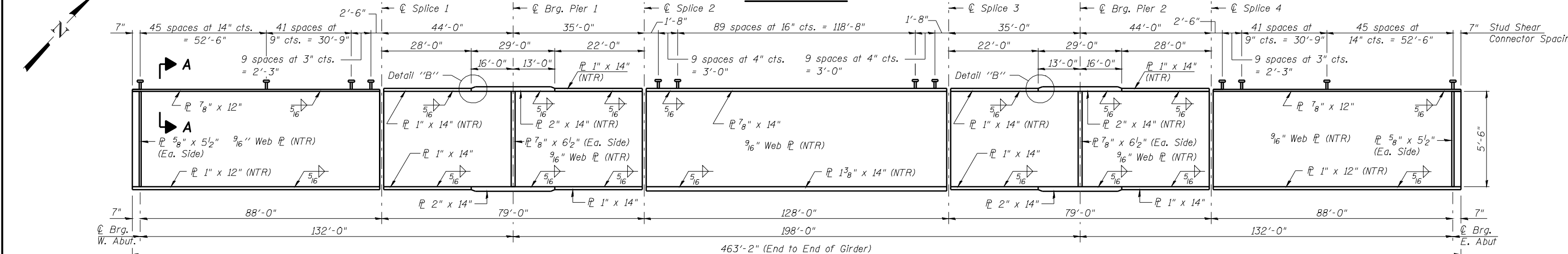


STATE OF ILLINOIS  
DEPARTMENT OF TRANSPORTATION

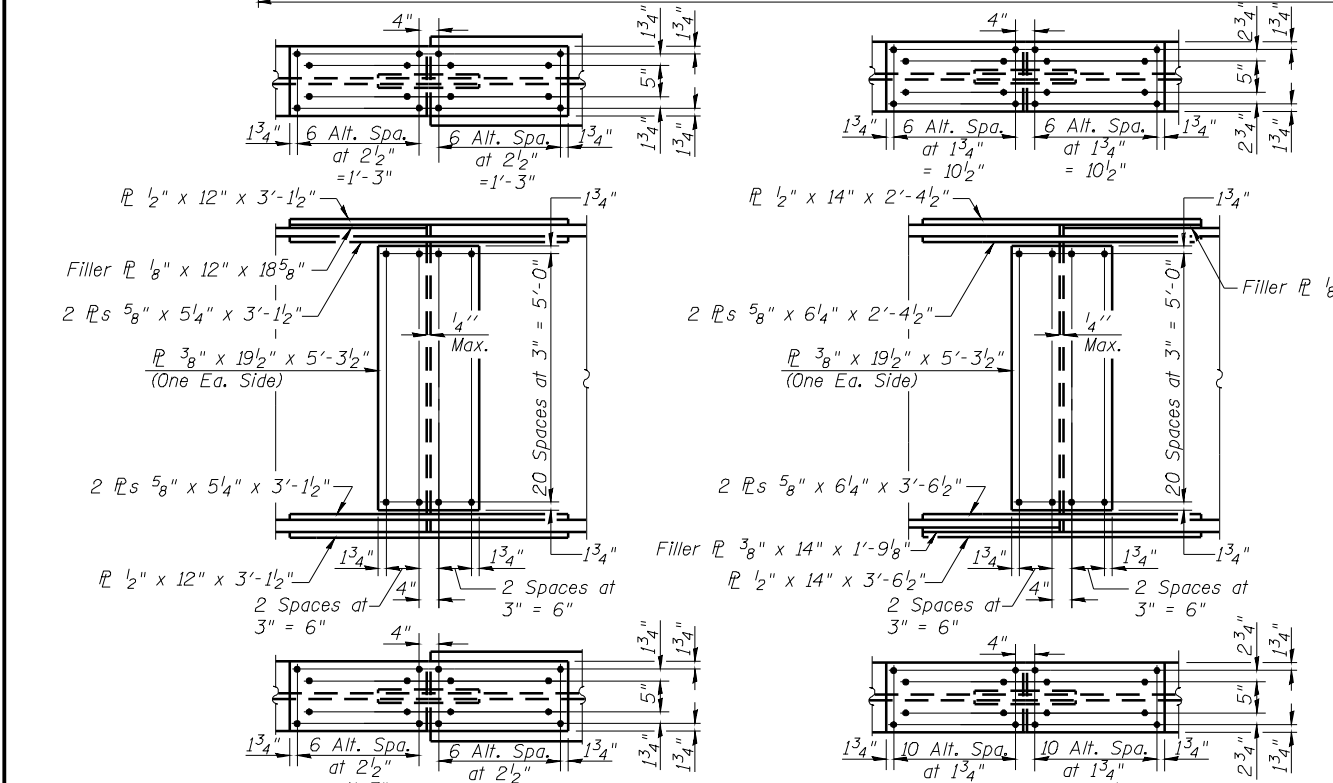


**FRAMING PLAN**



**GIRDER ELEVATION**

"NTR" denotes plates to which notch toughness requirements are applicable.

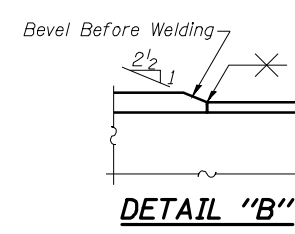


**FIELD SPLICE DETAIL**

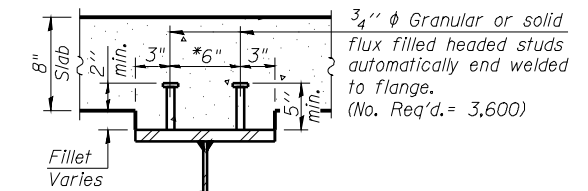
(Splice #1 shown, Splice #4 similar)

**FIELD SPLICE DETAIL**

(Splice #2 shown, Splice #3 similar)

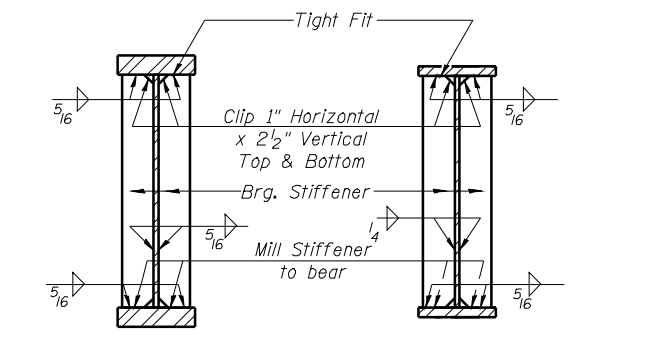


**DETAIL "B"**



**SECTION A-A**

\*8" on 14" top flange



**SECTION AT PIER**

**SECTION AT ABUTMENT**

- Notes:
1. All flange and web splice plates, except filler plates, shall be M270 Grade 50 and meet notch toughness requirements.
  2. Load carrying components designated "NTR" shall conform to the Supplemental Requirements for Notch Toughness, Zone 2.
  3. All girder flanges, webs and bearing stiffeners shall be M270 Grade 50.
  4. Work this sheet with sheet 16 of 29.

<p>LIN ENGINEERING, LTD. Consulting Engineers Chatham, Illinois</p>	SHEET NO. 15	F.A.P. RTE. 317	SECTION (10B-1)R	COUNTY BROWN/SCHUYLER	TOTAL SHEETS 196	SHEET NO. 134
	29 SHEETS	CONTRACT NO. 72432		ILLINOIS FED. AID PROJECT		