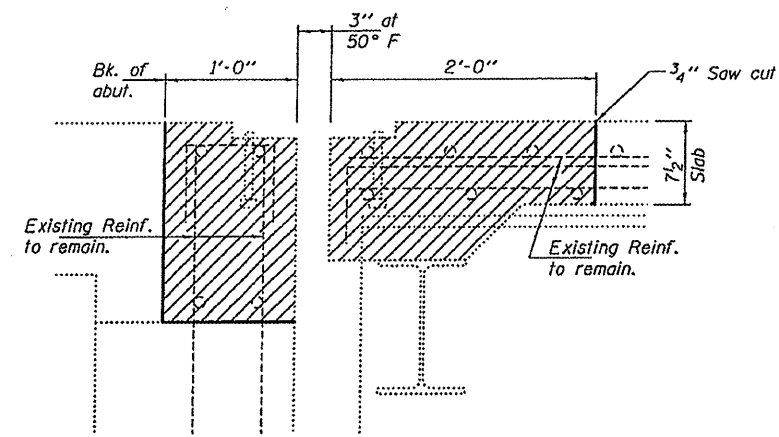
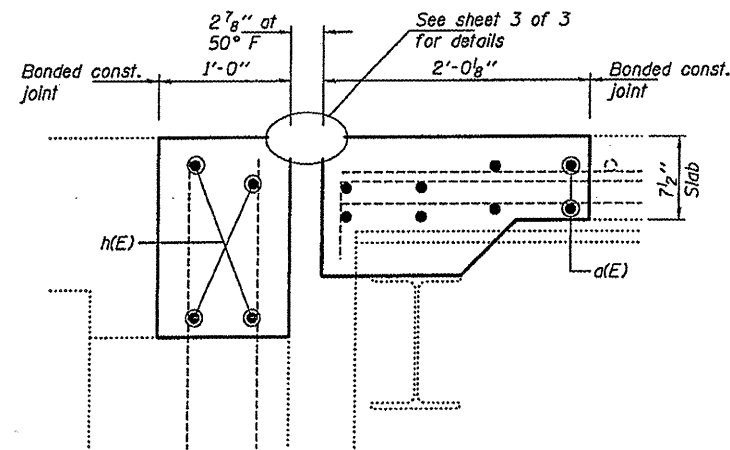


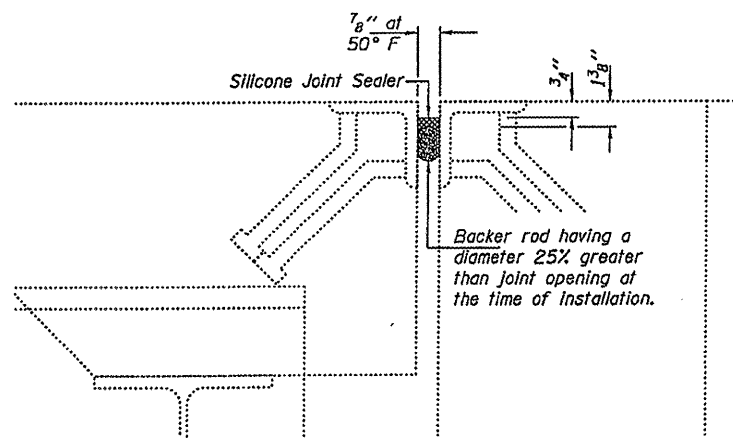
STATE OF ILLINOIS
DEPARTMENT OF TRANSPORTATION



SECTION A-A
(Near Centerline Roadway)



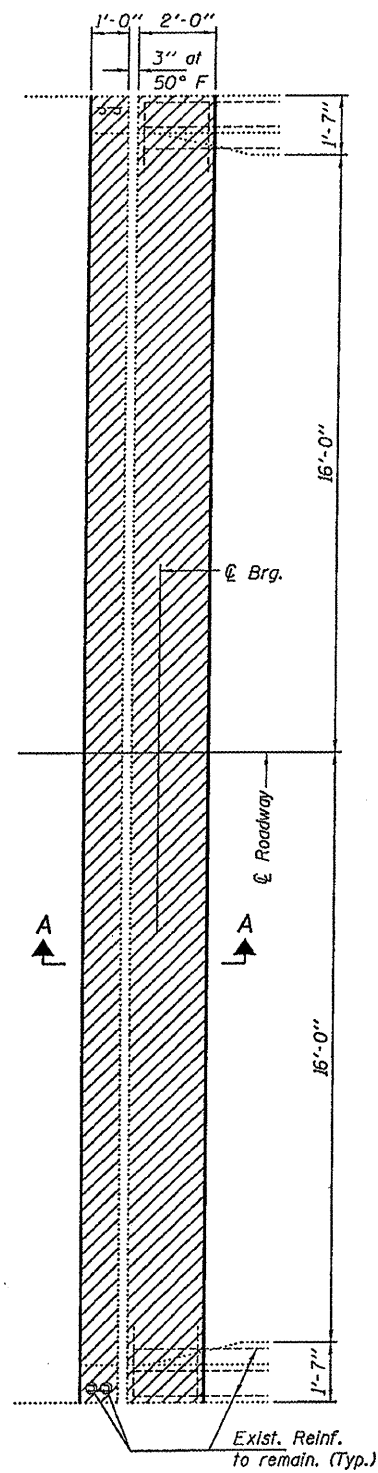
SECTION B-B
(Near Centerline Roadway)



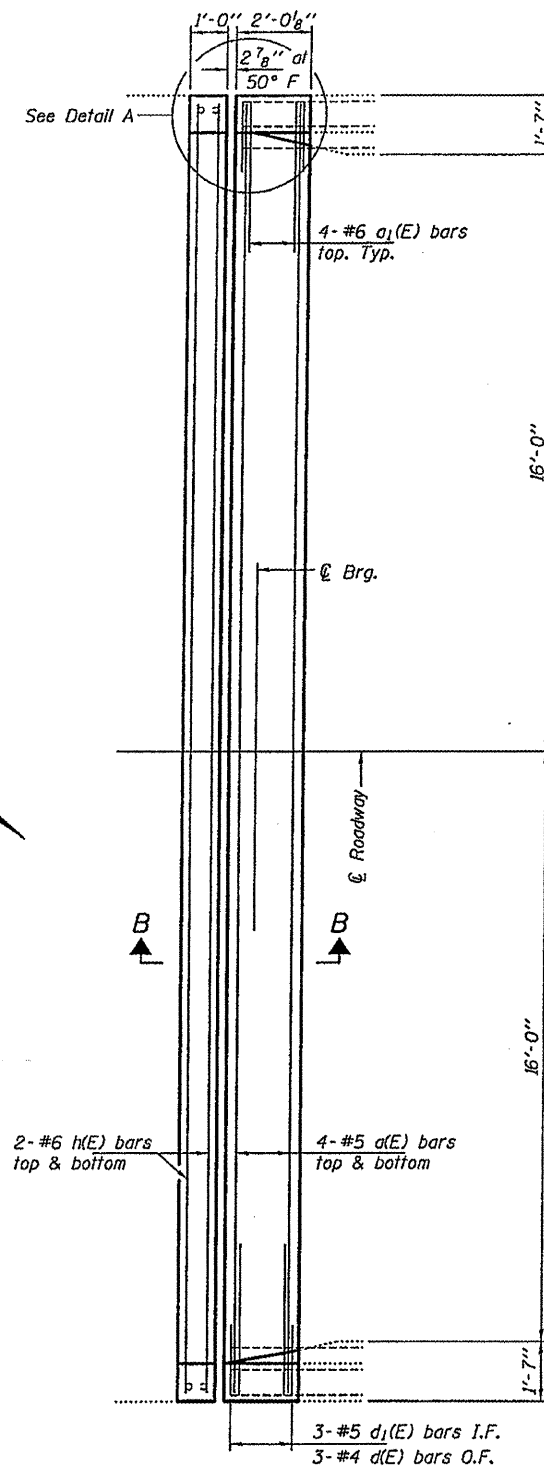
SECTION AT NORTH ABUTMENT
(Near Centerline Roadway)

| | |
|----------|---------|
| DESIGNED | IJL |
| CHECKED | ATH |
| DRAWN | baliva |
| CHECKED | IJL ATH |

APRIL 26, 2010
EXAMINED *Carl Poyner*
ENGINEER OF STRUCTURAL SERVICES
PASSED *Ralph E. Anderson*
ENGINEER OF BRIDGES AND STRUCTURES

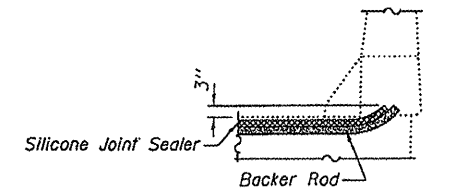


REMOVAL PLAN
(South Abutment)

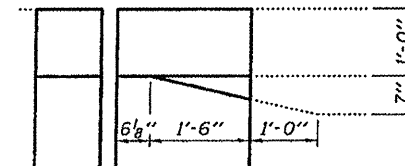


REPLACEMENT PLAN
(South Abutment)

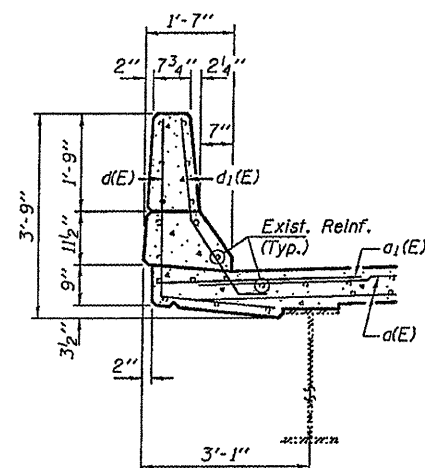
Notes:
Hatched areas indicate removal.



END OF SEAL TREATMENT
(North Abutment only)



DETAIL A

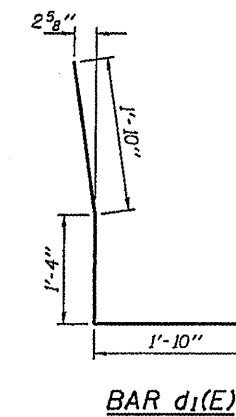


TYPICAL PARAPET SECTION

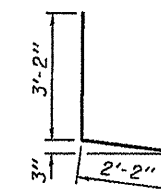
BILL OF MATERIAL

| Bar | No. | Size | Length | Shape |
|----------------------------------|-----|---------|---------|-------|
| a(E) | 8 | #5 | 33'-2" | — |
| a1(E) | 8 | #6 | 4'-0" | — |
| d(E) | 6 | #4 | 5'-4" | L |
| d1(E) | 6 | #5 | 5'-0" | L |
| h(E) | 4 | #6 | 34'-10" | — |
| Concrete Removal | | Cu. Yd. | 4.5 | |
| Concrete Superstructure | | Cu. Yd. | 4.5 | |
| Reinforcement Bars, Epoxy Coated | | Lbs. | 590 | |

JOINT REPLACEMENT DETAILS
FA 550 OVER CEDAR CREEK
SN 085-0029



BAR d1(E)



BAR d(E)

| | | | | | |
|---------------------|-----------|---------------------------|--------------------|--------------|-----------|
| SHEET NO. 2 | F.A. RTE. | SECTION | COUNTY | TOTAL SHEETS | SHEET NO. |
| 3 SHEETS | 550 | (9,10)I; 11(RS-1),BI | SCHUYLER | 86 | 42 |
| | | | CONTRACT NO. 72802 | | |
| FED. ROAD DIST. NO. | | ILLINOIS FED. AID PROJECT | | | |

Rev. Sheet 5-26-10