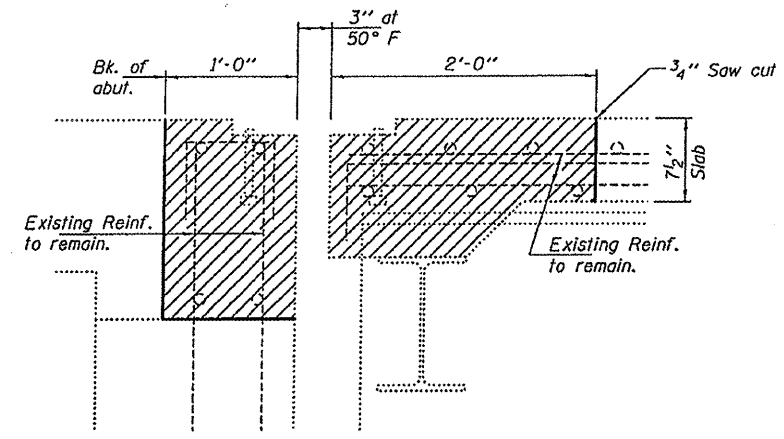
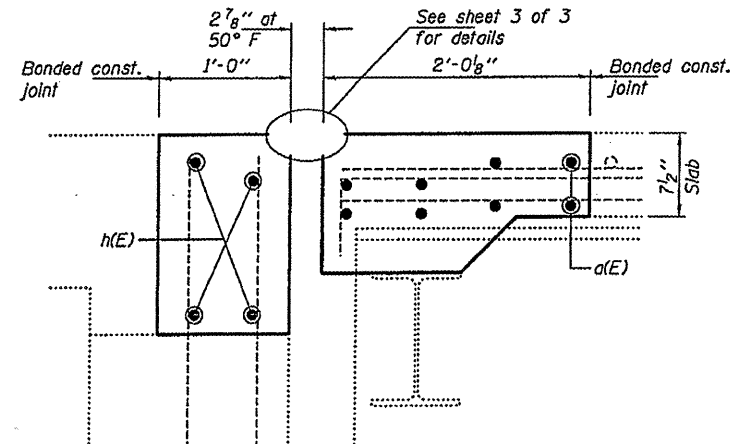


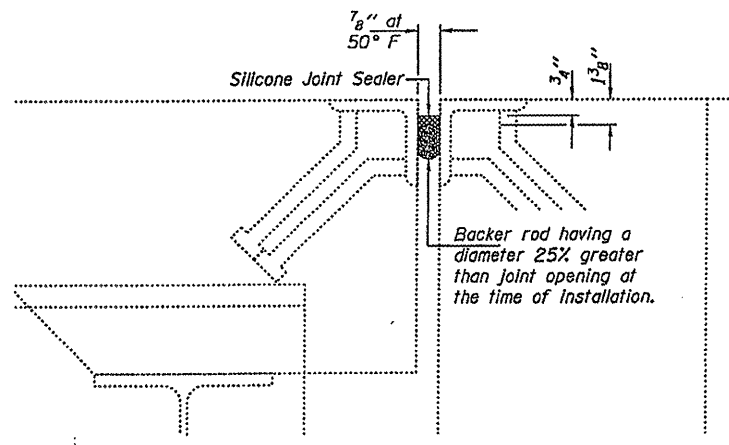
STATE OF ILLINOIS
DEPARTMENT OF TRANSPORTATION



SECTION A-A
(Near & Roadway)



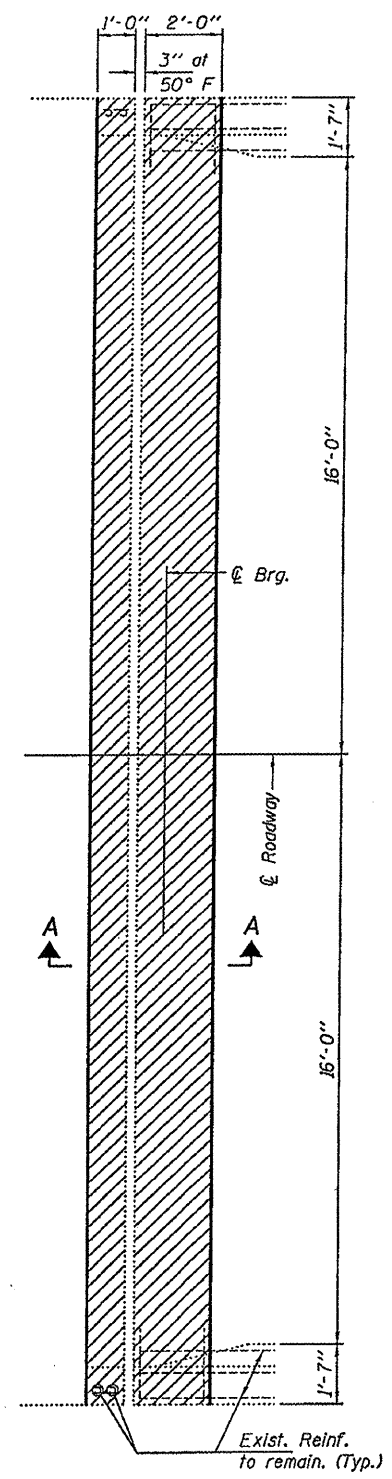
SECTION B-B
(Near & Roadway)



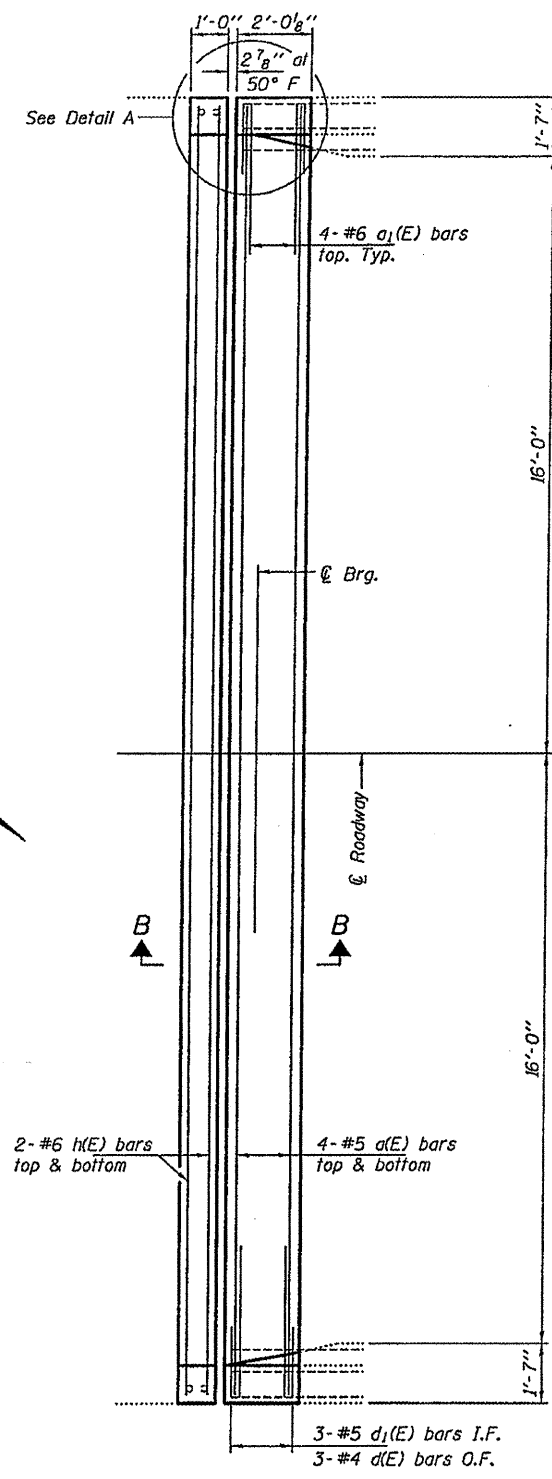
SECTION AT NORTH ABUTMENT
(Near & Roadway)

DESIGNED	IJL
CHECKED	ATH
DRAWN	baliva
CHECKED	IJL ATH

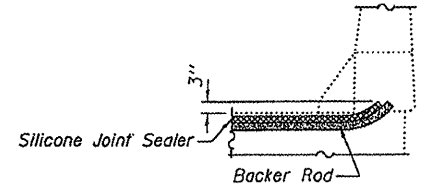
APRIL 26, 2010
EXAMINED *Carl Poyner*
ENGINEER OF STRUCTURAL SERVICES
PASSED *Ralph E. Anderson*
ENGINEER OF BRIDGES AND STRUCTURES



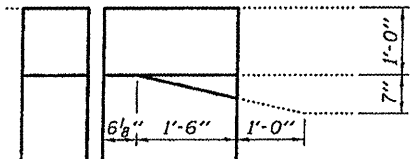
REMOVAL PLAN
(South Abutment)



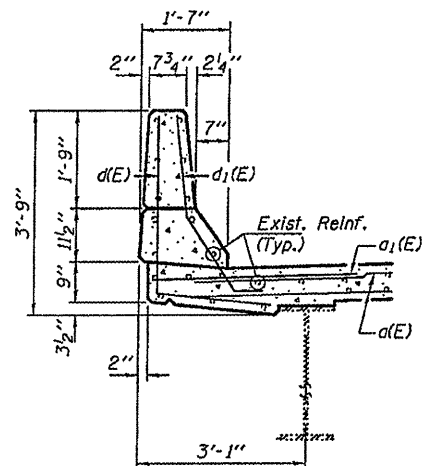
REPLACEMENT PLAN
(South Abutment)



END OF SEAL TREATMENT
(North Abutment only)



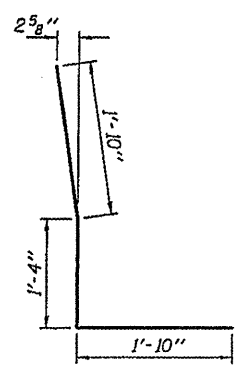
DETAIL A



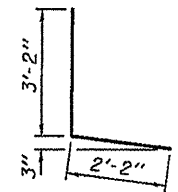
TYPICAL PARAPET SECTION

BILL OF MATERIAL

Bar	No.	Size	Length	Shape
a(E)	8	#5	33'-2"	—
a1(E)	8	#6	4'-0"	—
d(E)	6	#4	5'-4"	L
d1(E)	6	#5	5'-0"	L
h(E)	4	#6	34'-10"	—
Concrete Removal			Cu. Yd.	4.5
Concrete Superstructure			Cu. Yd.	4.5
Reinforcement Bars, Epoxy Coated			Lbs.	590



BAR d1(E)



BAR d(E)

JOINT REPLACEMENT DETAILS
FA 550 OVER CEDAR CREEK
SN 085-0029

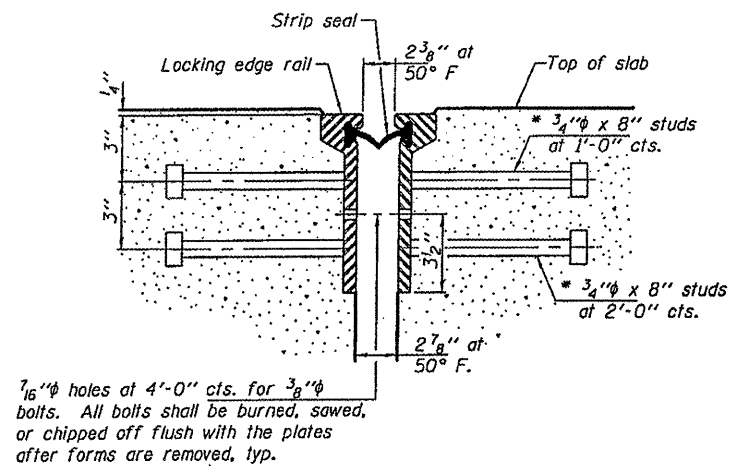
Notes:
Hatched areas indicate removal.

SHEET NO. 2 3 SHEETS	F.A. RTE.	SECTION	COUNTY	TOTAL SHEETS	SHEET NO.
	550	(9,10)I; 11(RS-1,BI)	SCHUYLER	86	42
FED. ROAD DIST. NO.			ILLINOIS FED. AID PROJECT		
CONTRACT NO. 72802					

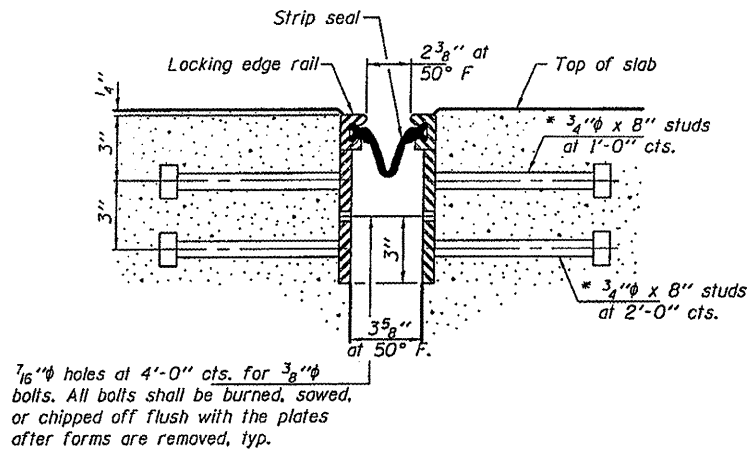
Rev. Sheet 5-26-10

STATE OF ILLINOIS
DEPARTMENT OF TRANSPORTATION

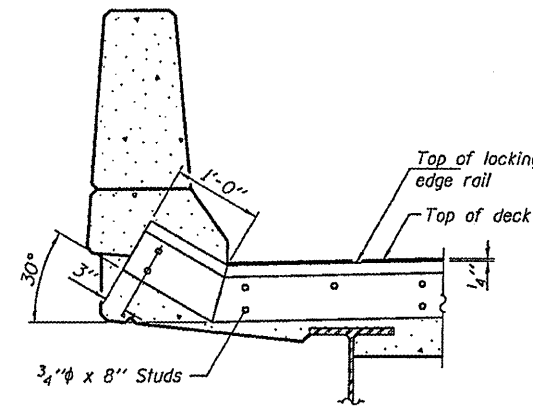
* Granular or solid flux filled headed studs conforming to Article 1006.32 of the Std. Specs., automatically end welded.



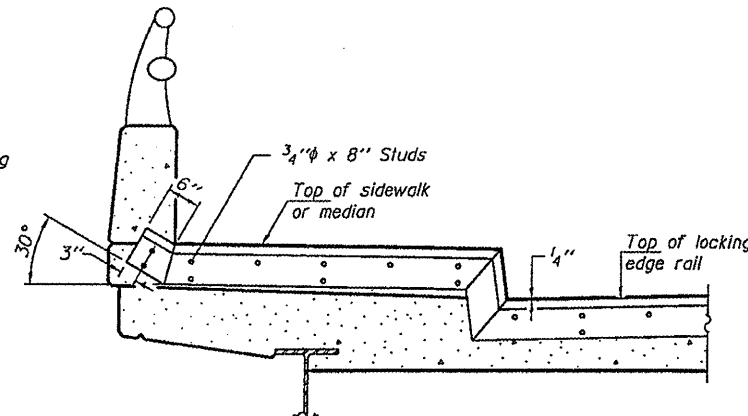
SECTION THRU
ROLLED RAIL JOINT



SECTION THRU
WELDED RAIL JOINT



AT PARAPET
See Section A-A for end treatment of skews > 30°.



AT SIDEWALK OR MEDIAN
Shorter plates with a single row of studs at 12" cts. may be necessary on medians which are shallower than 9". See manufacturer's recommendation.

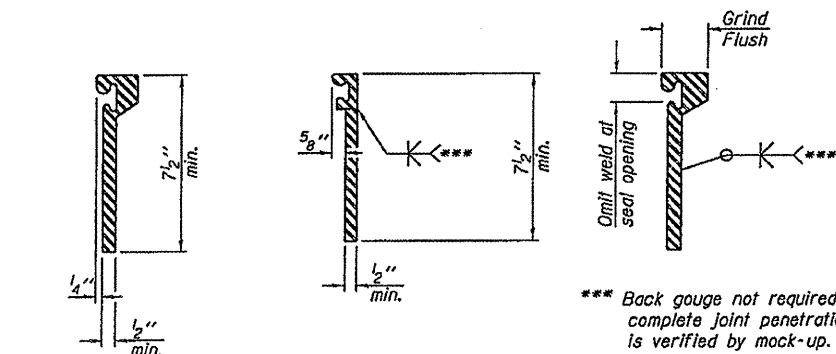
7/16" holes at 4'-0" cts. for 3/8" bolts. All bolts shall be burned, sawed, or chipped off flush with the plates after forms are removed, typ.

7/16" holes at 4'-0" cts. for 3/8" bolts. All bolts shall be burned, sawed, or chipped off flush with the plates after forms are removed, typ.

TYPICAL END TREATMENTS

Notes:

The strip seal shall be made continuous and shall have a minimum thickness of 1/4". The configuration of the strip seal shall match the configuration of the Locking Edge Rails. Open or "webbed" strip seal gland configurations are not permitted. The gland shall be sized for a maximum rated movement of 4 inches. The Locking Edge Rails depicted are conceptual only, except for the minimum dimensions shown. The actual configuration of the Locking Edge Rails and matching strip seal may vary from manufacturer to manufacturer. Flanged edge rails will not be allowed. Locking Edge Rails may be spliced at slope discontinuities. The manufacturer's recommended installation methods shall be followed. The joint opening and deck dimensions detailed on the superstructure are based on a rolled rail expansion joint. If the Contractor elects to use the welded rail expansion joint, the opening and deck dimensions shall be modified according to the dimensions detailed on this sheet. Required modifications shall be made at no additional cost to the State. All steel components shall be galvanized after fabrication according to Article 520.03 of the Standard Specifications. Maximum space between rail segments at stage lines shall be 3/16", sealed with a suitable sealant.

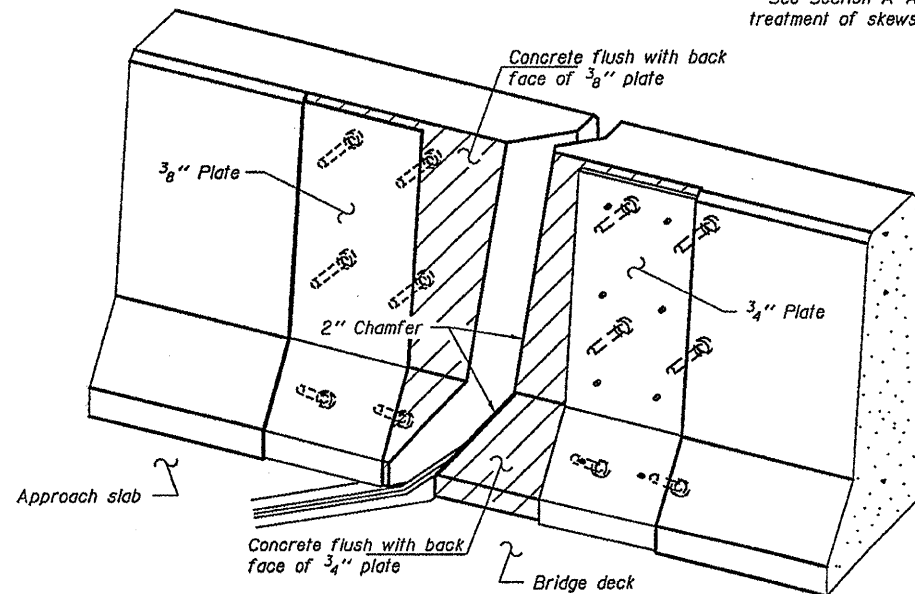


ROLLED
EXTRUDED RAIL

WELDED RAIL

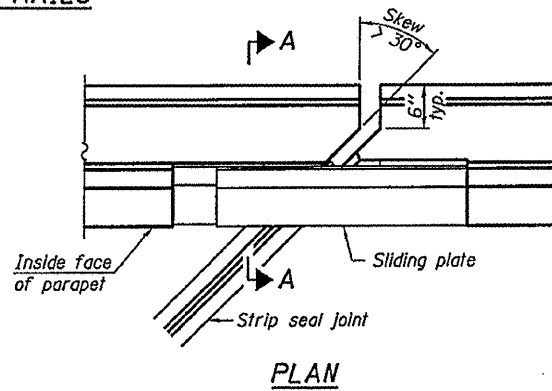
LOCKING EDGE
RAIL SPLICE

The inside of the locking edge rail groove shall be free of weld residue. Rolled rail shown, welded rail similar.

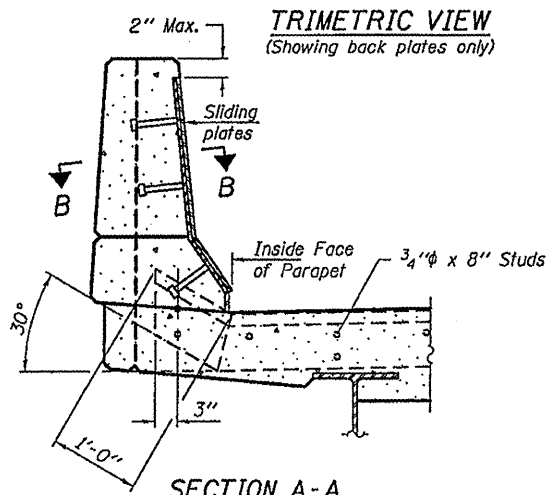


TRIMETRIC VIEW
(Showing back plates only)

LOCKING EDGE RAILS

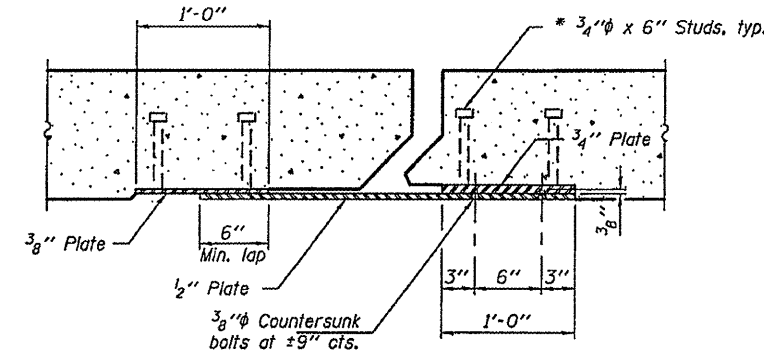


PLAN



SECTION A-A

POINT BLOCK DETAILS
(for skews > 30°)



SECTION B-B

BILL OF MATERIAL

Item	Unit	Total
Preformed Joint Strip Seal	Foot	35

PREFORMED JOINT STRIP SEAL
FA 550 OVER CEDAR CREEK
SN 085-0029

DESIGNED	IJL
CHECKED	ATH
DRAWN	baliva
CHECKED	IJL ATH

APRIL 26, 2010
EXAMINED *Carl Prosser*
PASSED *Ralph E. Anderson*
ENGINEER OF STRUCTURAL SERVICES
ENGINEER OF BRIDGES AND STRUCTURES

EJ-SSJ 11-1-09

SHEET NO. 3	F.A. RTE. 550	SECTION (9,10)I; 11(RS-1),BI	COUNTY SCHUYLER	TOTAL SHEETS 86	SHEET NO. 43
3 SHEETS	FED. ROAD DIST. NO. ILLINOIS		CONTRACT NO. 72802		

Rev. Sheet 5-26-10