

| F.A.P. RTE. | SECTION | COUNTY   | TOTAL SHEETS | SHEET NO. |
|-------------|---------|----------|--------------|-----------|
| 550         | 11 RS-1 | SCHUYLER | 86           | 1         |

STATE OF ILLINOIS  
DEPARTMENT OF TRANSPORTATION  
DIVISION OF HIGHWAYS  
**PROPOSED  
HIGHWAY PLANS**

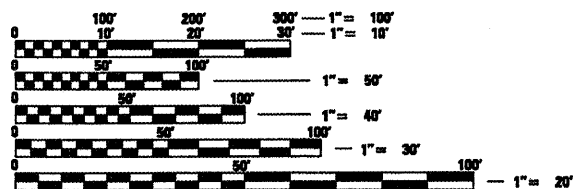
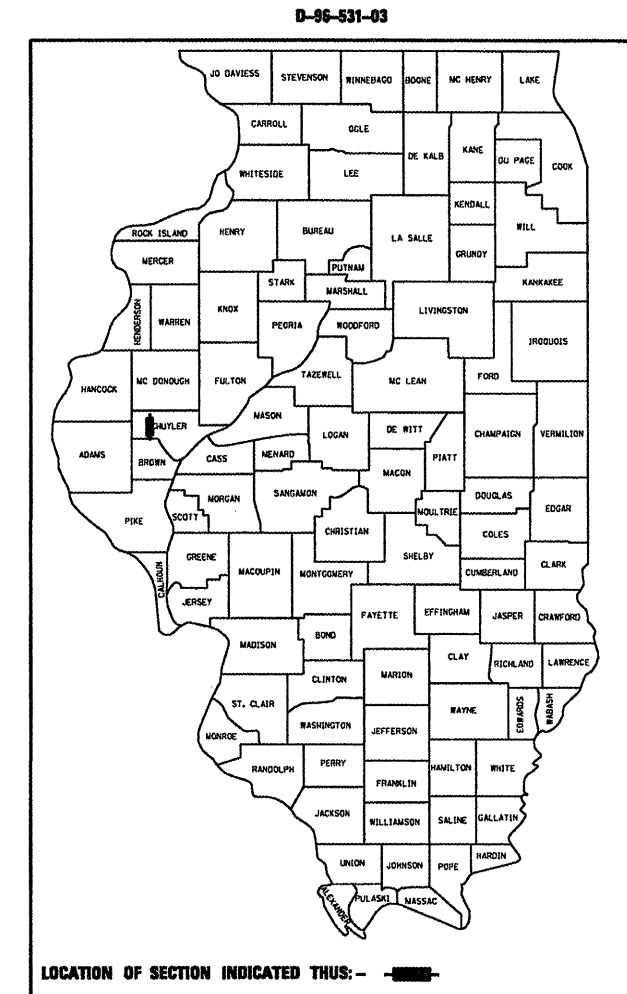
FOR INDEX OF SHEETS, SEE SHEET NO. 2

**HIGHWAY CLASSIFICATION**

FAP 550  
FUNCTIONAL CLASS - MINOR ARTERIAL  
ADT (2009) - 550  
ADT (2030) - 675  
PV - 88.0%  
SU - 8.0%  
MU - 4.0%

FAP ROUTE 550 (IL 99)  
SECTION (9,10)I; 11(RS-1, BI)

TYPE of IMPROVEMENT - 3P RESURFACING  
CULVERT EXTENSION, BRIDGE JOINT REPAIR  
SCHUYLER COUNTY  
C-96-548-04

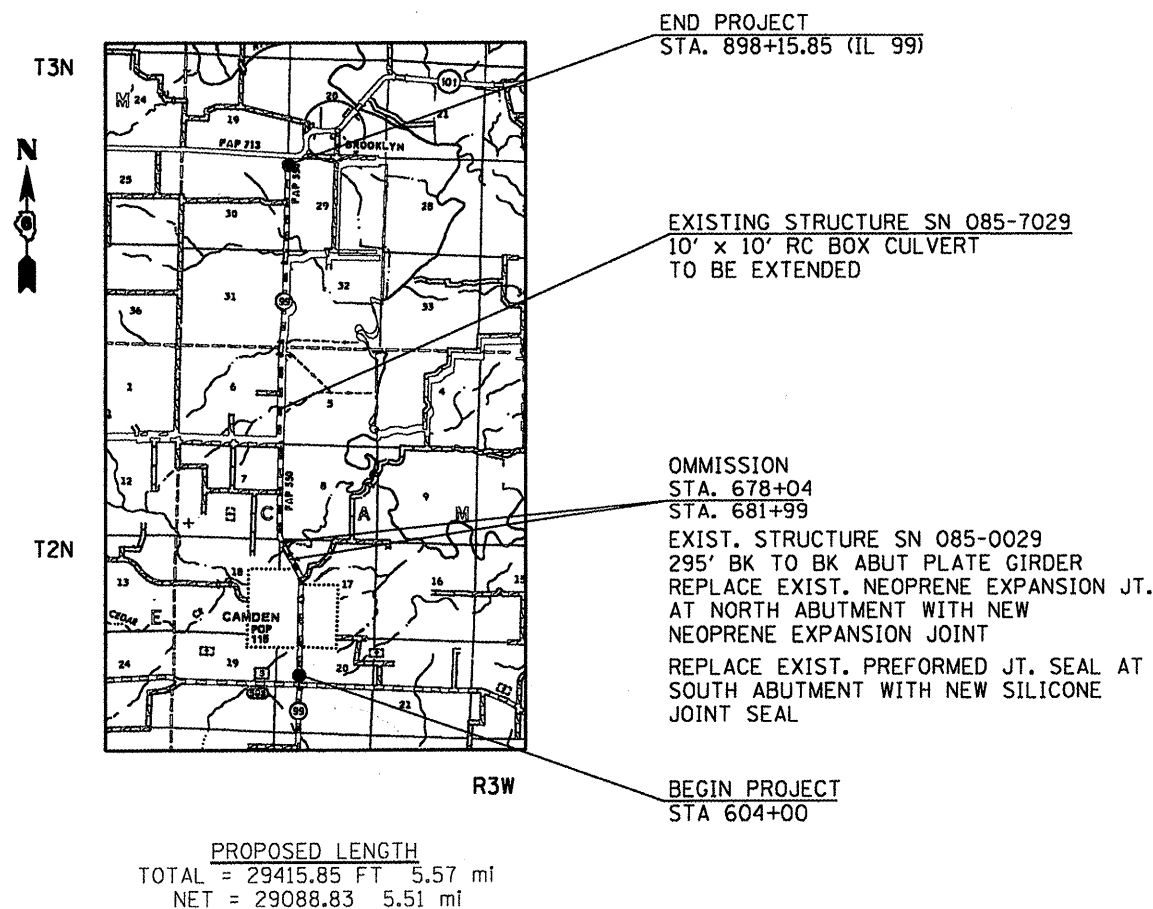


FULL SIZE PLANS HAVE BEEN PREPARED USING STANDARD ENGINEERING SCALES. REDUCED SIZED PLANS WILL NOT CONFORM TO STANDARD SCALES. IN MAKING MEASUREMENTS ON REDUCED PLANS, THE ABOVE SCALES MAY BE USED.

J.U.L.I.E.  
JOINT UTILITY LOCATION INFORMATION FOR EXCAVATION  
1-800-892-0123

PROJECT ENGINEER JOHN NEGANGARD (217)-782-6990  
PROJECT MANAGER VICTOR YOUNG (217)-557-7897

CONTRACT NO. 72802



STATE OF ILLINOIS  
DEPARTMENT OF TRANSPORTATION  
DIVISION OF HIGHWAYS

SUBMITTED April 5 2010  
Roy J. Dink DISTRICT ENGINEER

May 7 2010  
Scott E. Still, PE ENGINEER OF DESIGN AND ENVIRONMENT

May 7 2010  
Christine M. Reed DIRECTOR, DIVISION OF HIGHWAYS

**PRINTED BY THE AUTHORITY  
OF THE STATE OF ILLINOIS**