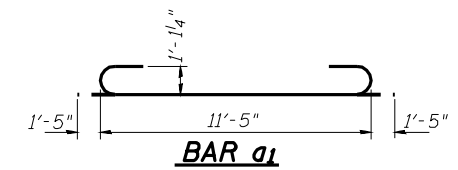
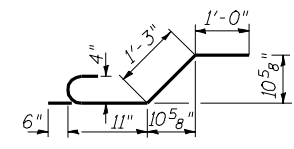


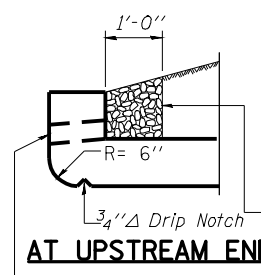
**LONGITUDINAL SECTION**



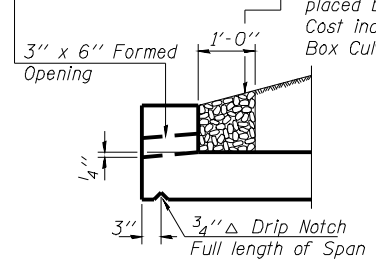
**BAR a1**



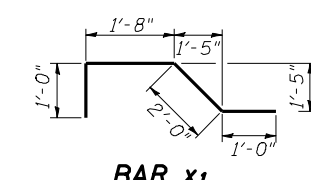
**BAR x**



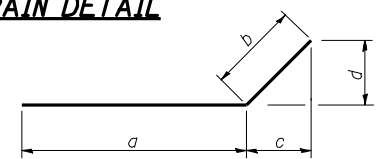
**AT UPSTREAM END**



**AT DOWNSTREAM END DRAIN DETAIL**



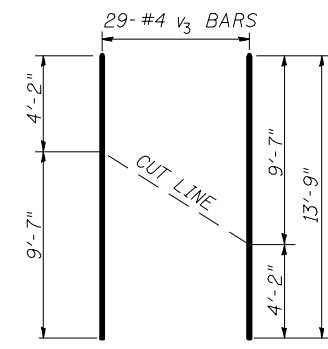
**BAR x1**



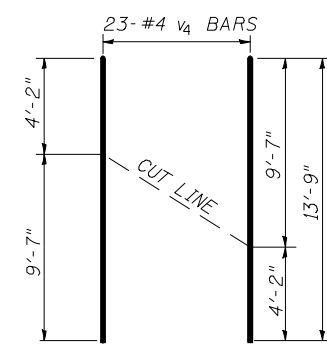
**MIN BAR LAP**  
#4 = 1'-8" (wingwall)

Bar	a	b	c	d
h4	7'-3"	3'-0"	1'-10"	2'-4 1/2"
h5	14'-6"	3'-0"	1'-10"	2'-4 1/2"
h6	18'-6"	3'-0"	2'-4 1/2"	1'-10"
h7	9'-3"	3'-0"	2'-4 1/2"	1'-10"

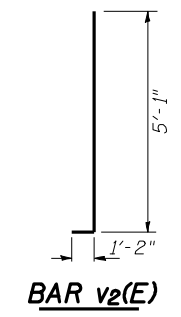
**BARS h4, h5, h6, & h7**



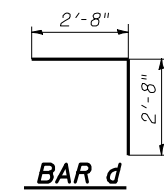
**FIELD CUTTING DIAGRAM (Long Wing)**



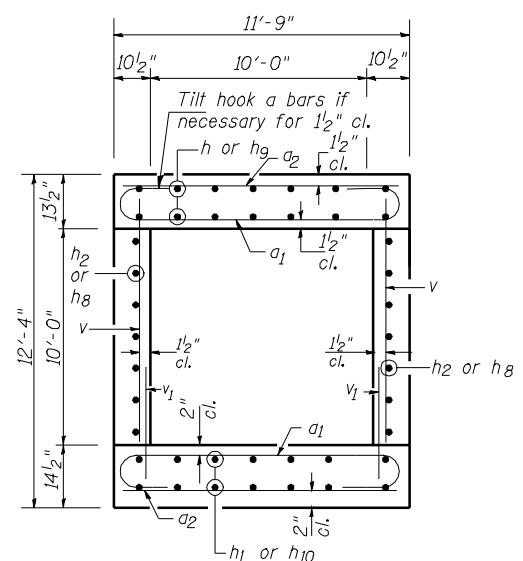
**FIELD CUTTING DIAGRAM (Short Wing)**



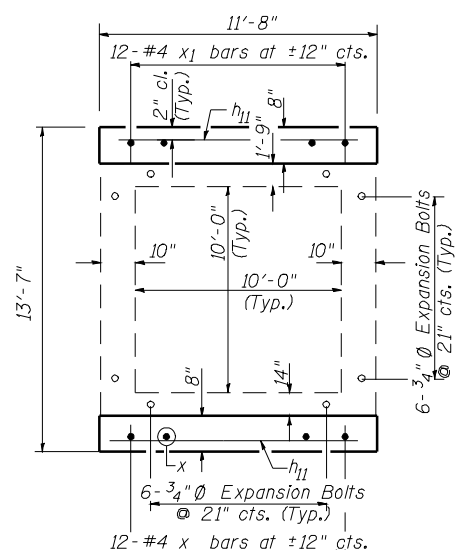
**BAR v2(E)**



**BAR d**



**SECTION B-B (Cast-in-Place)**



**SECTION A-A**

**BILL OF MATERIAL**

BAR	NO.	SIZE	LENGTH	SHAPE
a1	286	#10	14'-3"	U
a2	86	#4	10'-3"	—
b	24	#5	25'-6"	—
b1	56	#5	18'-6"	—
d	50	#4	5'-4"	L
h	44	#6	21'-9"	—
h1	36	#7	28'-1"	—
h2	40	#8	22'-7"	—
h4	28	#4	10'-3"	—
h5	36	#8	17'-6"	—
h6	50	#9	21'-6"	—
h7	40	#4	12'-3"	—
h8	40	#8	21'-9"	—
h9	44	#6	20'-11"	—
h10	36	#7	27'-3"	—
h11	16	#6	11'-5"	—
h12	48	#5	11'-0"	—
v	306	#8	10'-6"	—
v1	306	#7	3'-1"	—
v2(E)	104	#7	6'-3"	—
v3	29	#4	13'-9"	—
v4	23	#4	13'-9"	—
x	24	#4	3'-8"	—
x1	24	#4	5'-8"	—
<b>3/4" EXPANSION BOLTS</b>			EACH	48
<b>CONCRETE BOX CULVERTS</b>			CU YD	170.0
<b>REINFORCEMENT BARS</b>			POUND	49,470
<b>REINFORCEMENT BARS, EPOXY COATED</b>			POUND	1,330

**CULVERT DETAILS**  
**SCHUYLER COUNTY**  
**SECTION (9,10)I; 11 (RS-1,BI)**  
**FAP 550 (IL 99) OVER**  
**DRAINAGE DITCH**  
**STATION 756+84.99**  
**STRUCTURE NO. 085-7029**