

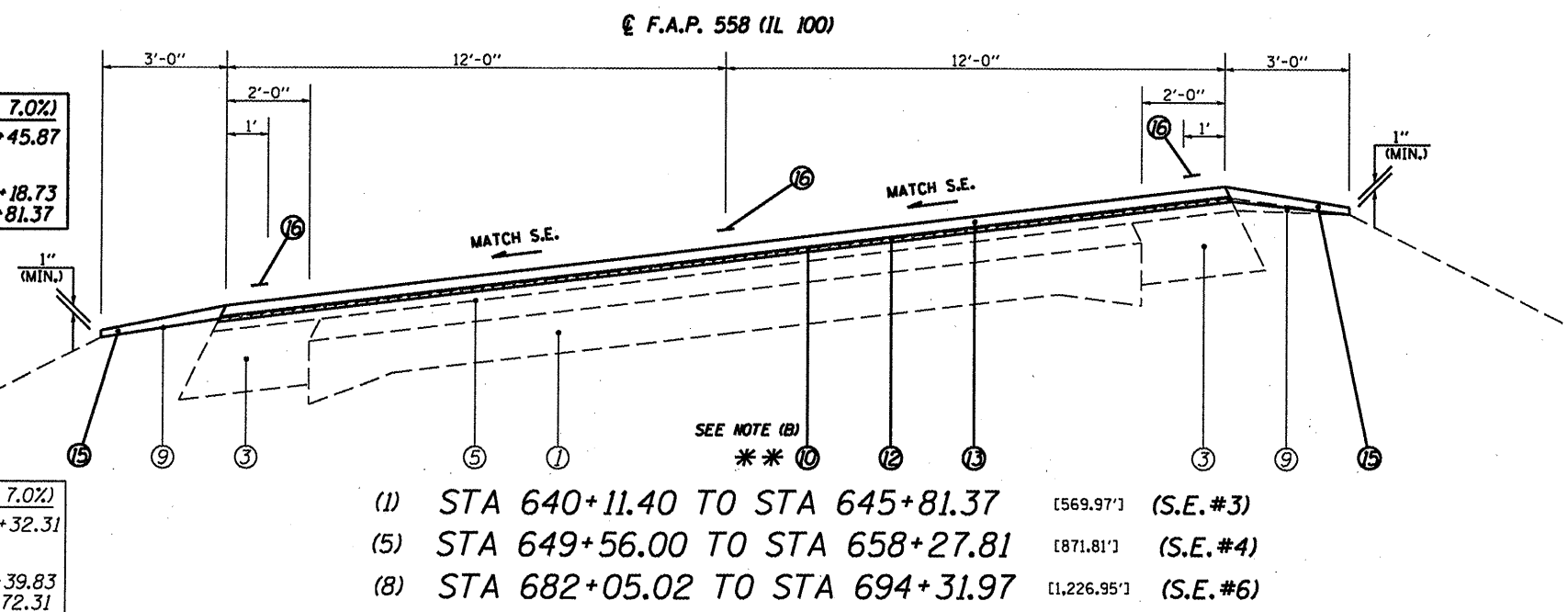
LEGEND

- ① EXIST. P.C.C. PAVEMENT 9'-6"-9"
- ② EXIST. BITUMINOUS BASE COURSE 13 1/4"
- ③ EXIST. BITUMINOUS BASE COURSE WIDENING 9"
- ④ EXIST. BITUMINOUS CONCRETE LEVELING BINDER, VARIABLE DEPTH
- ⑤ EXIST. BITUMINOUS OVERLAY 5"
- ⑥ EXIST. BITUMINOUS SHOULDERS 8"
- ⑦ EXIST. CONCRETE CURB & GUTTER, TYPE B-6.24
- ⑧ EXIST. CONCRETE GUTTER, TYPE A (MODIFIED)
- ⑨ EXIST. AGGREGATE SHOULDER
- ⑩ PROP. HOT-MIX ASPHALT SURFACE REMOVAL (VARIABLE DEPTH) *
- ⑪ PROP. HOT-MIX ASPHALT SURFACE REMOVAL 2 1/4"
- ⑫ PROP. LEVELING BINDER (MACHINE METHOD), N50 3/4"
- ⑬ PROP. HOT-MIX ASPHALT SURFACE COURSE, MIX "C", N50 1 1/2"
- ⑭ PROP. HOT-MIX ASPHALT SHOULDERS
- ⑮ PROP. AGGREGATE SHOULDERS, TYPE B
- ⑯ PROP. PAINT PAVEMENT MARKING - LINE 5"

* NOMINAL MILLING DEPTH 1/2" @ 6'

(PROP.)
FULL S.E.: (S.E.#3 = 7.0%)
 STA. 633+18.73 TO 643+45.87
S.E. TRANSITION:
 STA. 630+83.23 TO 633+18.73
 STA. 643+45.87 TO 645+81.37

(EXIST.)
FULL S.E.: (S.E.#3 = 7.0%)
 STA. 633+39.83 TO 643+32.31
S.E. TRANSITION:
 STA. 630+98.83 TO 633+39.83
 STA. 643+32.31 TO 645+72.31



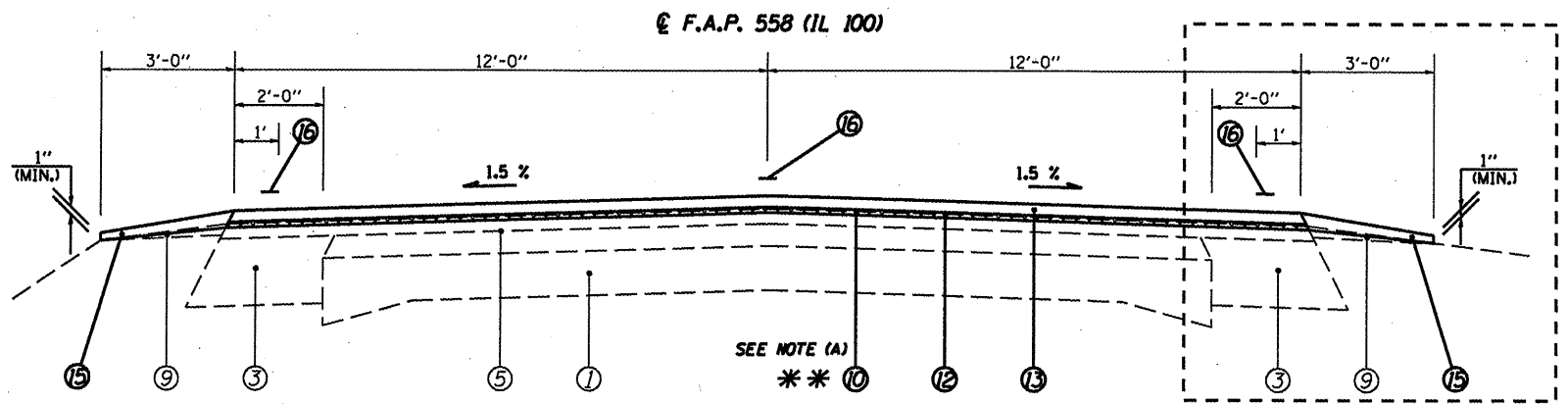
- (1) STA 640+11.40 TO STA 645+81.37 [569.97'] (S.E.#3)
- (5) STA 649+56.00 TO STA 658+27.81 [871.81'] (S.E.#4)
- (8) STA 682+05.02 TO STA 694+31.97 [1,226.95'] (S.E.#6)

(PROP.)
FULL S.E.: (S.E.#4 = 7.0%)
 STA. 650+28.93 TO 655+92.31
S.E. TRANSITION:
 STA. 647+93.43 TO 650+28.93
 STA. 655+92.31 TO 658+27.81

(EXIST.)
FULL S.E.: (S.E.#4 = 7.0%)
 STA. 650+50.14 TO 655+78.22
S.E. TRANSITION:
 STA. 648+10.14 TO 650+50.14
 STA. 655+78.22 TO 658+18.28

(PROP.)
FULL S.E.: (S.E.#6 = 6.0%)
 STA. 683+88.82 TO 692+24.17
S.E. TRANSITION:
 STA. 681+81.02 TO 683+88.82
 STA. 692+24.17 TO 694+31.97

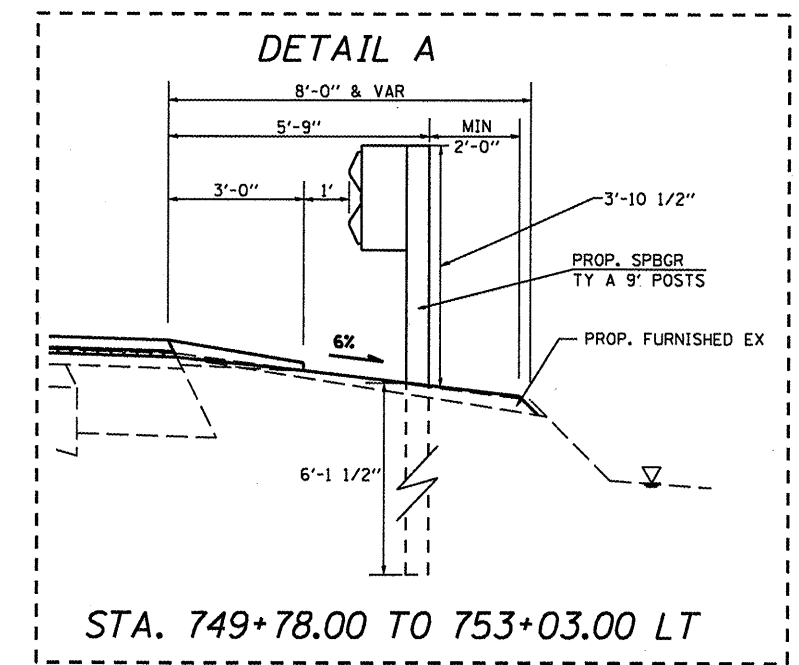
(EXIST.)
FULL S.E.: (S.E.#6 = 6.0%)
 STA. 684+15.80 TO 692+04.06
S.E. TRANSITION:
 STA. 681+80.95 TO 684+15.80
 STA. 692+04.06 TO 694+44.06



- (2) STA 645+81.37 TO STA 646+85.00 [103.63'] SEE DETAIL A
- (6) STA 658+27.81 TO STA 668+87.37 [1,059.56']
- (9) STA 694+31.97 TO STA 704+35.82 [1,003.85']
- (10) STA 707+35.59 TO STA 708+19.87 [84.28']
- (12) STA 721+53.84 TO STA 731+27.38 [973.54'] (S.E.#7)
- (14) STA 744+98.38 TO STA 754+40.09 [941.71'] (S.E.#8)

BRIDGE OMISSION #1
 S.N.: 075-0140
 STA. 704+70.82 TO
 STA. 707+00.59

(STA. EQN. #5):
 STA. 754+40.09 (BK) =
 STA. 558+85.13 (AH)



STA. 749+78.00 TO 753+03.00 LT

(NOT TO SCALE)

- ** NOTES:
- (A) MILLING DEPTH VAR. FR. 1/2" TO 2 1/4" FR. STA. 646+50.00 TO 646+85.00.
 - (B) MILLING DEPTH VAR. FR. 2 1/4" TO 1/2" FR. STA. 649+56.00 TO 649+91.00.

EXIST. CONC. BARRIER
 STA 648+30.00 TO 648+50.00

EXIST. CONC. BARRIER
 STA 648+05.00 TO 648+25.00

- (3) STA 646+85.00 TO STA 647+93.43 [108.43']