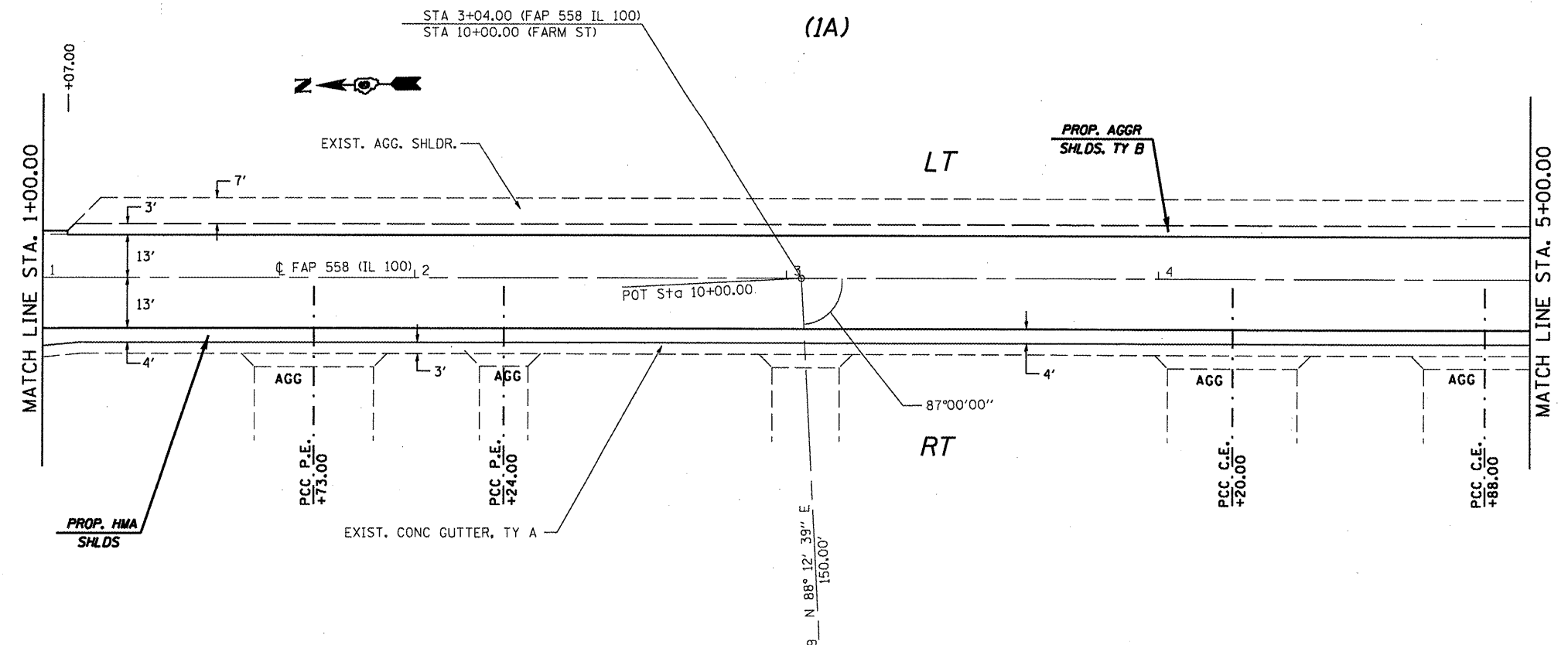


EXIST. CURVE 37  
 PI STA. = 372+07.12  
 $\Delta = 3^\circ 03' 43''$  (RT)  
 $D = 1^\circ 02' 59''$   
 $R = 5,458.41'$   
 $T = 145.88'$   
 $L = 291.69'$   
 $E = 1.95'$   
 $\theta =$   
 $T.R. =$   
 $S.E. RUN =$   
 $P.C. STA. = 370+61.24$   
 $P.T. STA. = 373+52.93$

**LEGEND**  
 PROP. HOT-MIX ASPHALT SURFACE REMOVAL - BUTT JOINT



FILE NAME =	USER NAME = coxjw	DESIGNED - RSC	REVISED -	<b>STATE OF ILLINOIS DEPARTMENT OF TRANSPORTATION</b>	<b>PLAN VIEW - AREA A</b>			F.A.P. RTE. 558	SECTION	COUNTY PIKE	TOTAL SHEETS 77	SHEET NO. 23
ct\pwwork\PWIDOT\COXJW\dms25489\06728	4-ahs-dblp1n28-1.dgn	DRAWN - JWC	REVISED -		SCALE: 20	SHEET NO. 1 OF 36 SHEETS	STA. 0+12.14 TO STA. 5+00.00	CONTRACT NO. 72814				
	PLOT SCALE = 48.0000" / IN.	CHECKED - RSC	REVISED -		ILLINOIS FED. AID PROJECT							
	PLOT DATE = Mar-18-2010 01:20:16PM	DATE -	REVISED -		118RS-2, 119RS-2, 123RS-3							