

MATCH LINE STA. 282+50.00

MATCH LINE STA. 297+50.00

MATCH LINE STA. 312+50.00

MATCH LINE STA. 297+50.00

MATCH LINE STA. 312+50.00

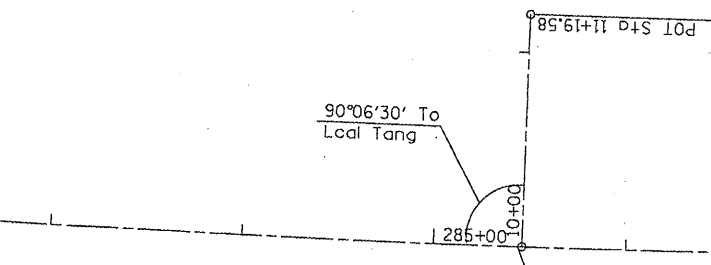
MATCH LINE STA. 322+50.00

EXIST. CURVE 82
 PI STA. = 285+07.23
 $\Delta = 6^\circ 52' 27''$ (LT)
 $D = 0^\circ 39' 29''$
 $R = 8,707.42'$
 $T = 522.97'$
 $L = 1,044.69'$
 $E = 15.69'$
 $e = N/A$
 $T.R. = N/A$
 $S.E. RUN = N/A$
 $P.C. STA. = 279+84.26$
 $P.T. STA. = 290+28.95$

EXIST. CURVE 300
 PI STA. = 316+84.72
 $\Delta = 8^\circ 16' 26''$ (RT)
 $D = 0^\circ 50' 09''$
 $R = 6,855.70'$
 $T = 495.86'$
 $L = 990.00'$
 $E = 17.91'$
 $e = N/A$
 $T.R. = N/A$
 $S.E. RUN = N/A$
 $P.C. STA. = 311+88.86$
 $P.T. STA. = 321+78.86$

PROP. GUARDRAIL REM &
 TRAF BAR TERM TI SPL TAN
 STA 299+97.00 TO 300+47.00 LT &
 STA 300+38.00 TO 300+88.00 RT
 STA 302+13.00 TO 302+63.00 RT &
 STA 303+22.00 TO 303+79.49 LT

(STA EON 4)
 Station Equation #4
 $P.O.T. STA. 303+67.18$ BK. 5
 $P.O.T. STA. 303+74.67$ AH



LT

RT

(36A)

(36A)

(37A)

LT

RT

(37A)

LT

RT

FILE NAME =	USER NAME = coxjw	DESIGNED - RSC	REVISED -	STATE OF ILLINOIS DEPARTMENT OF TRANSPORTATION	PLAN VIEW - AREA A			F.A.P. RTE. 558	SECTION *	COUNTY PIKE	TOTAL SHEETS 77	SHEET NO. 40	
CONTRACT NO. 72814	SCALE: 50	CHECKED - RSC	REVISED -		SHEET NO. 18 OF 36 SHEETS	STA. 282+50.00 TO STA. 322+50.00	ILLINOIS FED. AID PROJECT						
PLOT DATE = Mar-18-2018 01:19:32PM		DATE -	REVISED -										