

EXIST. CURVE 8
 PI STA. = 653+19.40
 $\Delta = 31^\circ 08' 02''$ (LT)
 $D = 4^\circ 29' 42''$
 $R = 1,274.67'$
 $T = 355.10'$
 $L = 692.64'$
 $E = 48.54'$
 $e = 7\%$
 $T.R. = 42'$
 $S.E. RUN = 194'$
 $P.C. STA. = 649+64.30$
 $P.T. STA. = 656+56.94$

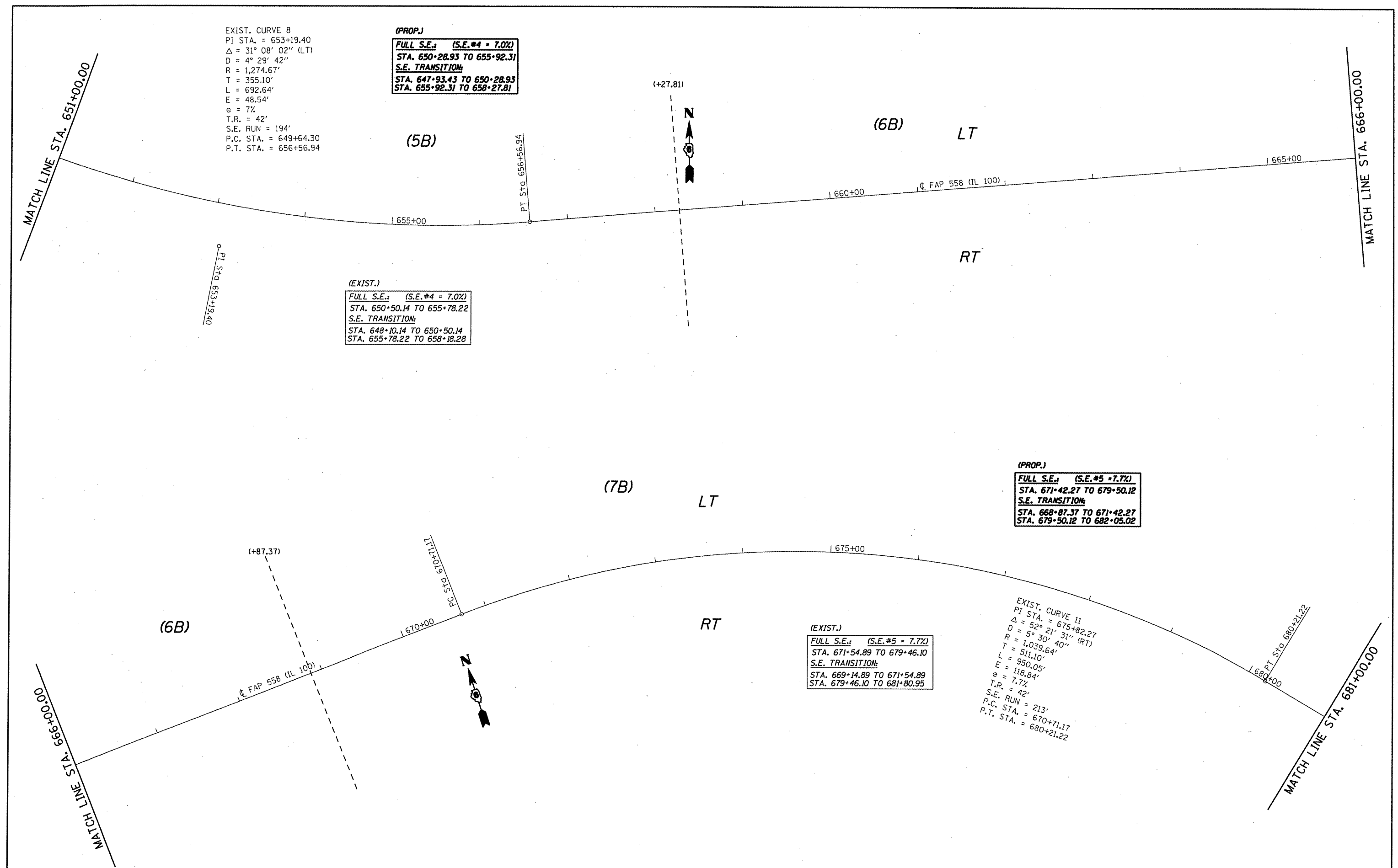
(PROP.)
FULL S.E.: (S.E.#4 = 7.0%)
STA. 650+28.93 TO 655+92.31
S.E. TRANSITION:
STA. 647+93.43 TO 650+28.93
STA. 655+92.31 TO 658+27.81

(EXIST.)
FULL S.E.: (S.E.#4 = 7.0%)
STA. 650+50.14 TO 655+78.22
S.E. TRANSITION:
STA. 648+10.14 TO 650+50.14
STA. 655+78.22 TO 658+18.28

(PROP.)
FULL S.E.: (S.E.#5 = 7.7%)
STA. 671+42.27 TO 679+50.12
S.E. TRANSITION:
STA. 668+87.37 TO 671+42.27
STA. 679+50.12 TO 682+05.02

(EXIST.)
FULL S.E.: (S.E.#5 = 7.7%)
STA. 671+54.89 TO 679+46.10
S.E. TRANSITION:
STA. 669+14.89 TO 671+54.89
STA. 679+46.10 TO 681+80.95

EXIST. CURVE 11
 PI STA. = 675+82.27
 $\Delta = 52^\circ 21' 31''$ (RT)
 $D = 5^\circ 30' 40''$
 $R = 1,039.64'$
 $T = 511.10'$
 $L = 950.05'$
 $E = 118.84'$
 $e = 7.7\%$
 $T.R. = 42'$
 $S.E. RUN = 213'$
 $P.C. STA. = 670+71.17$
 $P.T. STA. = 680+21.22$



FILE NAME =	USER NAME = coxjw	DESIGNED - RSC	REVISED -	STATE OF ILLINOIS DEPARTMENT OF TRANSPORTATION	PLAN VIEW - AREA B			F.A.P. RTE. 558	SECTION	COUNTY PIKE	TOTAL SHEETS 77	SHEET NO. 43
at\pw_work\FW100T\COXJW\dms25409\6528	4-shr-plot-50-2.dgn	DRAWN - JWC	REVISED -		SCALE: 50	SHEET NO. 21 OF 36 SHEETS	STA. 651+00.00 TO STA. 681+00.00	CONTRACT NO. 72814				
	PLOT SCALE = 1/80.0000 / IN.	CHECKED - RSC	REVISED -		ILLINOIS FED. AID PROJECT							
	PLOT DATE = Mar-18-2010 01:20:21PM	DATE -	REVISED -		118RS-2, 119RS-2, 123RS-3							