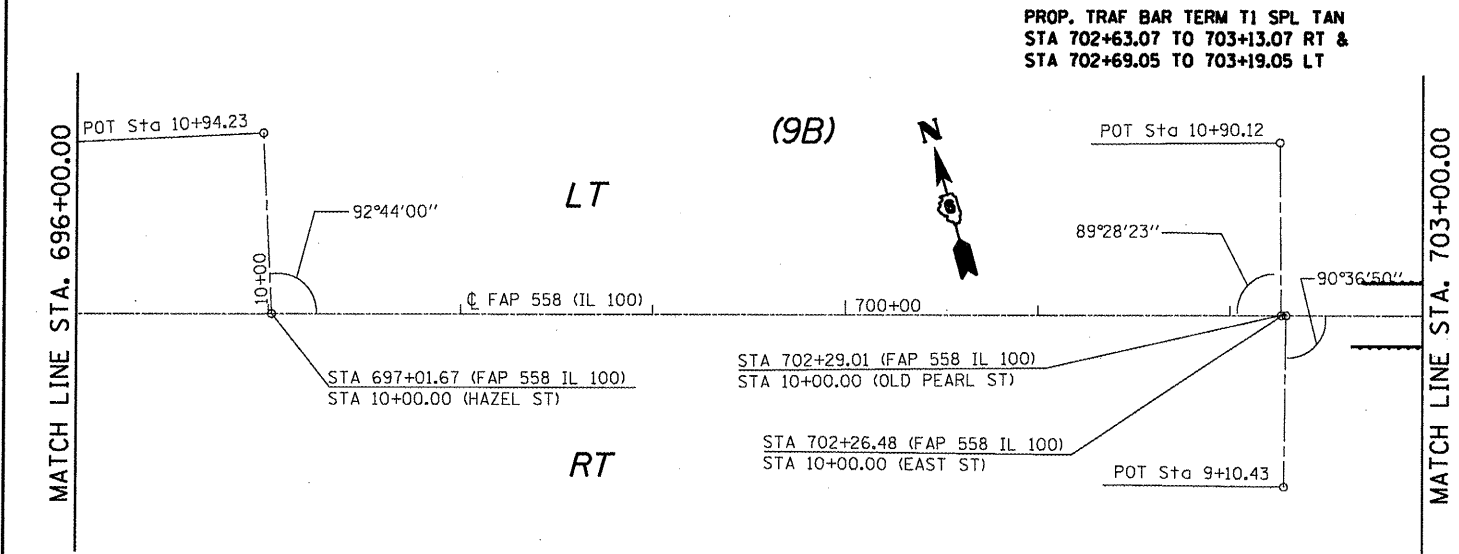


(PROP.)
FULL S.E.: (S.E.#6 = 6.0%)
 STA. 683+88.82 TO 692+24.17
S.E. TRANSITION:
 STA. 681+81.02 TO 683+88.82
 STA. 692+24.17 TO 694+31.97

EXIST. CURVE 15
 PI STA. = 688+20.12
 $\Delta = 33^\circ 07' 01''$ (LT)
 $D = 3^\circ 30' 01''$
 $R = 1,636.93'$
 $T = 486.70'$
 $L = 946.15'$
 $E = 70.82'$
 $e = 6\%$
 $T.R. = 42'$
 S.E. RUN = 166'
 P.C. STA. = 683+33.42
 P.T. STA. = 692+79.57

(EXIST.)
FULL S.E.: (S.E.#6 = 6.0%)
 STA. 684+15.80 TO 692+04.06
S.E. TRANSITION:
 STA. 681+80.95 TO 684+15.80
 STA. 692+04.06 TO 694+44.06

PROP. TRAF BAR TERM T1 SPL TAN
 STA 702+63.07 TO 703+13.07 RT &
 STA 702+69.05 TO 703+19.05 LT



FILE NAME =	USER NAME = coxjm	DESIGNED - RSC	REVISED -
ca:\pw_work\PWIDOT\COXJM\dms25489\d6528	4-sh-t-plen58-2.dgn	DRAWN - JWC	REVISED -
PLOT SCALE = 100.0000' / IN.		CHECKED - RSC	REVISED -
PLOT DATE = Mar-18-2010 01:29:22PM		DATE -	REVISED -

**STATE OF ILLINOIS
 DEPARTMENT OF TRANSPORTATION**

PLAN VIEW - AREA B

SCALE: 50 SHEET NO. 22 OF 36 SHEETS STA. 681+00.00 TO STA. 703+00.00

F.A.P. RTE.	SECTION	COUNTY	TOTAL SHEETS	SHEET NO.
558		PIKE	77	44
CONTRACT NO. 72814			ILLINOIS FED. AID PROJECT	