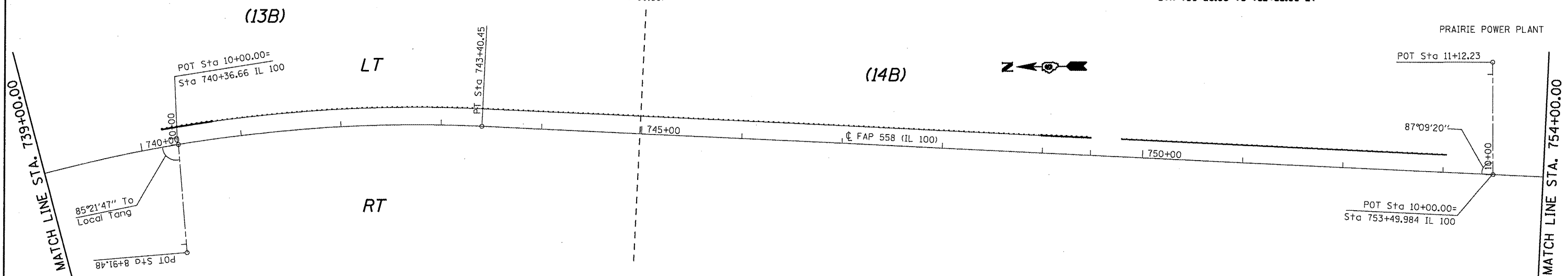


FULL S.E.: (S.E.#8 = 6.32)
 STA. 733+43.48 TO 742+82.28
 S.E. TRANSITION:
 STA. 731+27.38 TO 733+43.48
 STA. 742+82.28 TO 744+98.38

PROP. TRAF BAR TERM T1 SPL TAN
 STA 749+78.00 TO 750+28.00 LT &
 STA 752+53.00 TO 753+03.00 LT

PROP. SPBGR 9' POSTS
 STA 750+28.00 TO 752+53.00 LT



PROP. GUARDRAIL REM &
 TRAF BAR TERM T1 SPL TAN
 STA 740+23.00 TO 740+73.00 LT &
 STA 748+98.00 TO 749+48.00 LT

(EXIST.)
 FULL S.E.: (S.E.#8 = 6.32)
 STA. 733+71.94 TO 742+61.55
 S.E. TRANSITION:
 STA. 731+31.94 TO 733+71.94
 STA. 742+61.55 TO 745+01.55

FILE NAME =	USER NAME = coxjm	DESIGNED - RSC	REVISED -
at\pwork\PIWIDOT\COXJM\dms25489\d6528	4-shr-plan58-2.dgn	DRAWN - JWC	REVISED -
	PLOT SCALE = 100.0000' / IN.	CHECKED - RSC	REVISED -
	PLOT DATE = Mar-18-2010 01:20:24PM	DATE -	REVISED -

**STATE OF ILLINOIS
 DEPARTMENT OF TRANSPORTATION**

PLAN VIEW - AREA B

SCALE: 50 SHEET NO. 25 OF 36 SHEETS STA. 739+00.00 TO STA. 754+00.00

F.A.P. RTE.	SECTION	COUNTY	TOTAL SHEETS	SHEET NO.
558		PIKE	77	47
CONTRACT NO. 72814				
ILLINOIS FED. AID PROJECT				

• 118RS-2, 119RS-2, 123RS-3