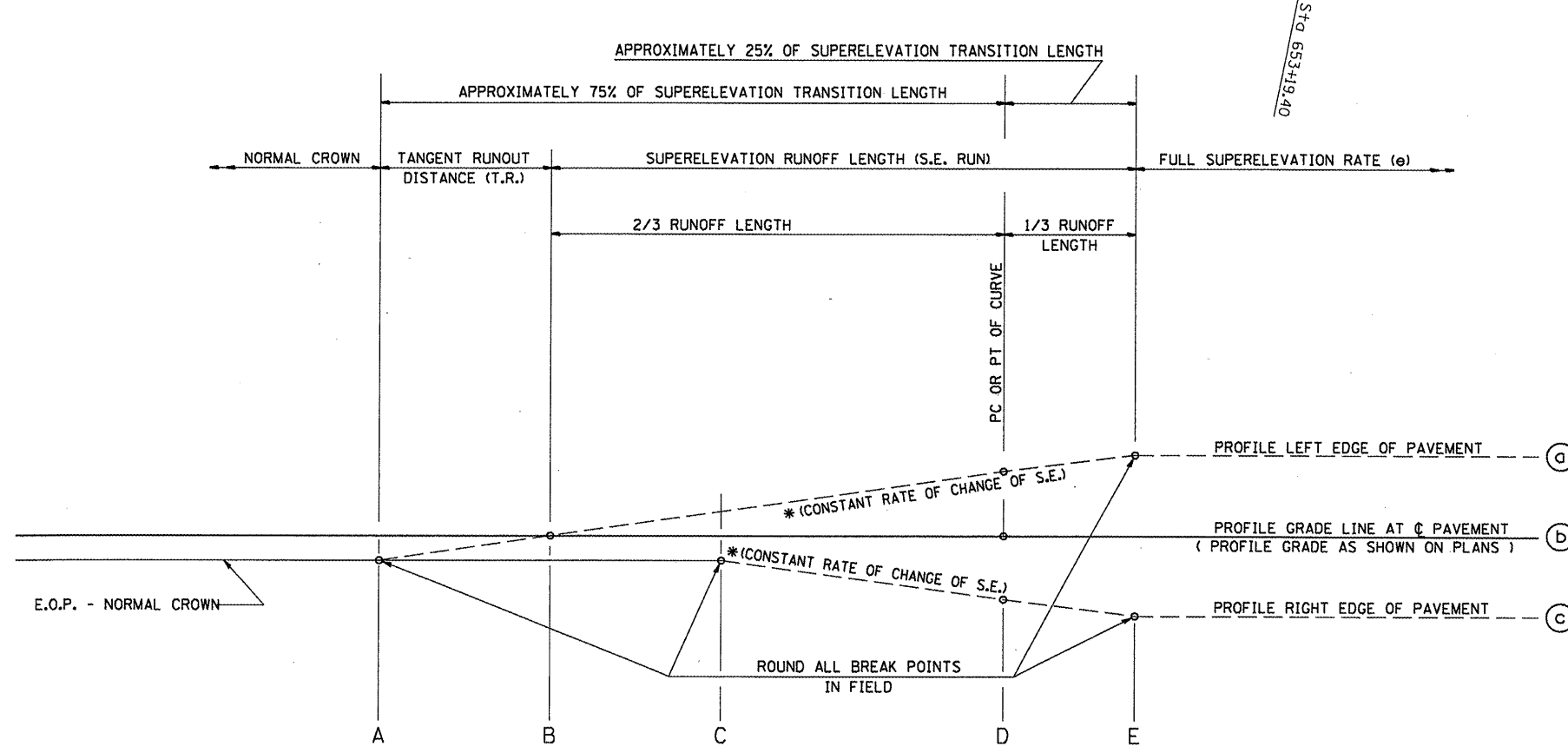
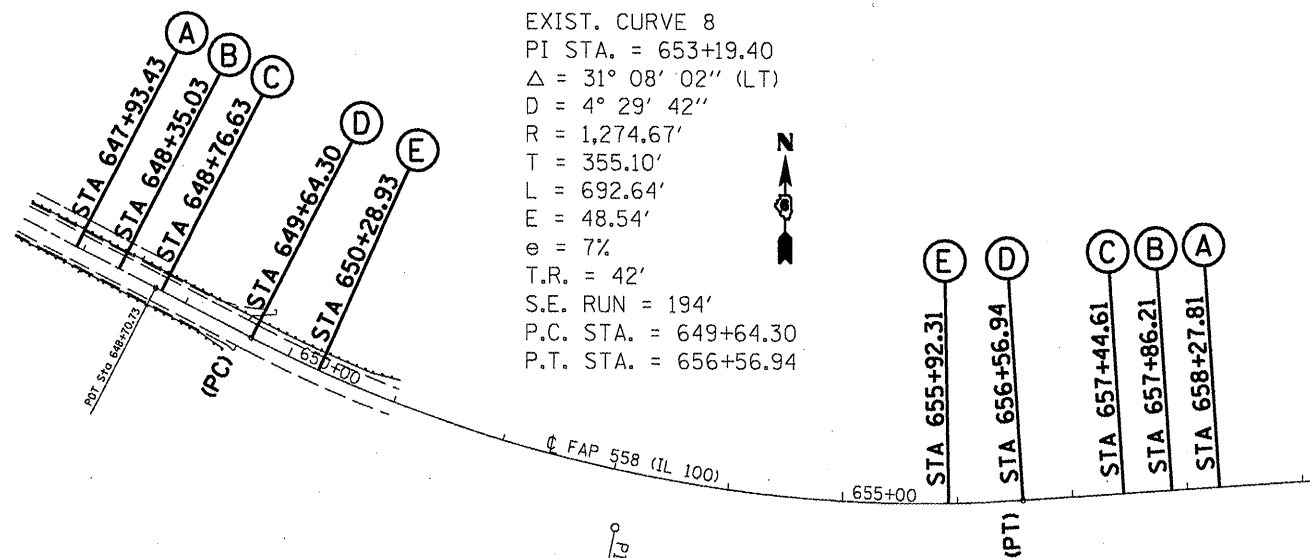


(EXISTING)
 FULL S.E.: (S.E.#4 = 7.0%)
 STA. 650+50.14 TO 655+78.22
 S.E. TRANSITION:
 STA. 648+10.14 TO 650+50.14
 STA. 655+78.22 TO 658+18.28



TYPICAL PROFILE - S.E. TRANSITION

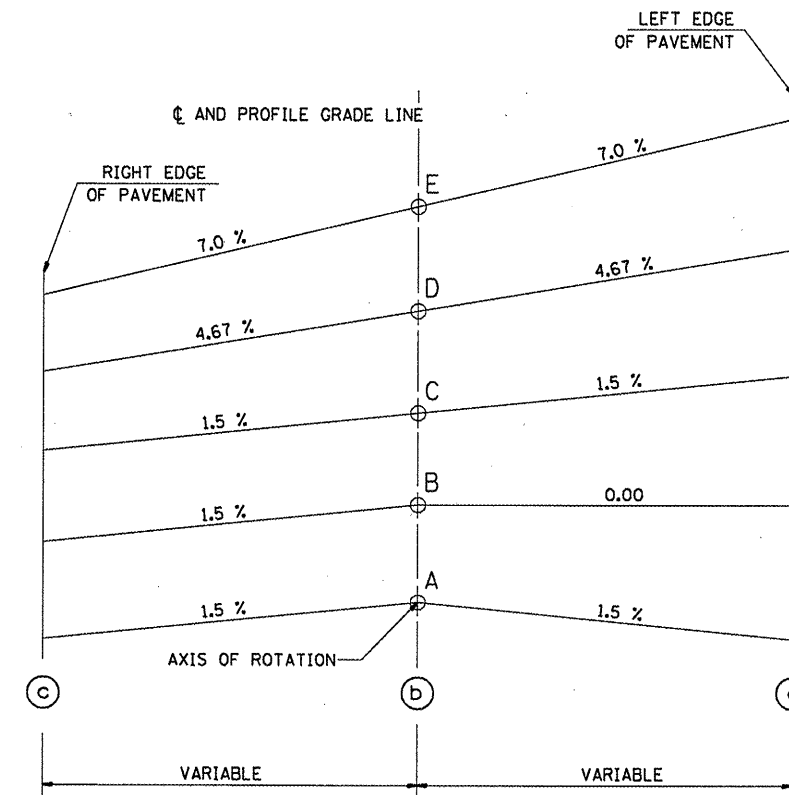


TABLE OF SUPERELEVATION BREAK POINT LOCATIONS - SE #4							
CURVE NO.	e	A	B	C	D	E	TRANSITION
8	7.00%	647+93.43	648+35.03	648+76.63	649+64.30	650+28.93	Trans. In
8	7.00%	658+27.81	657+86.21	657+44.61	656+56.94	655+92.31	Trans. Out