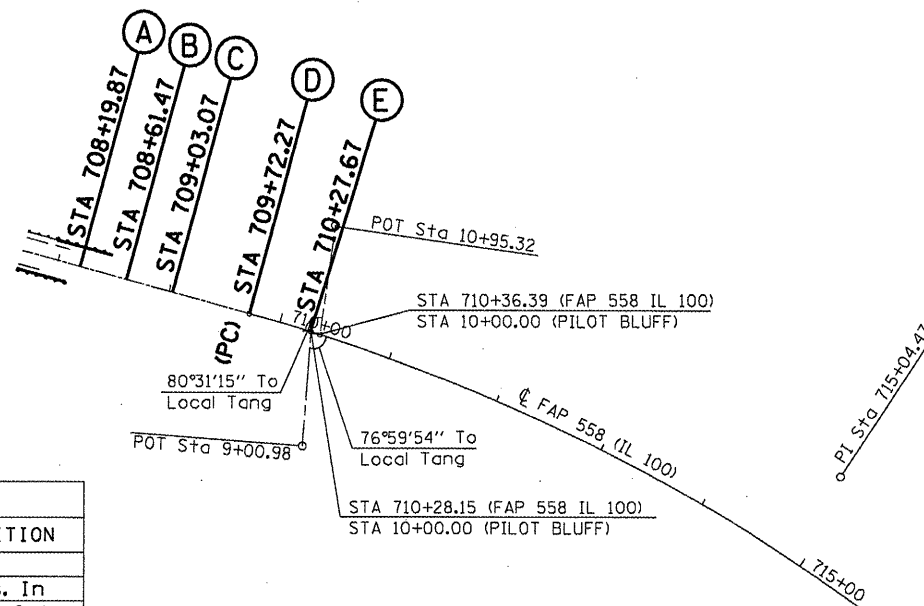


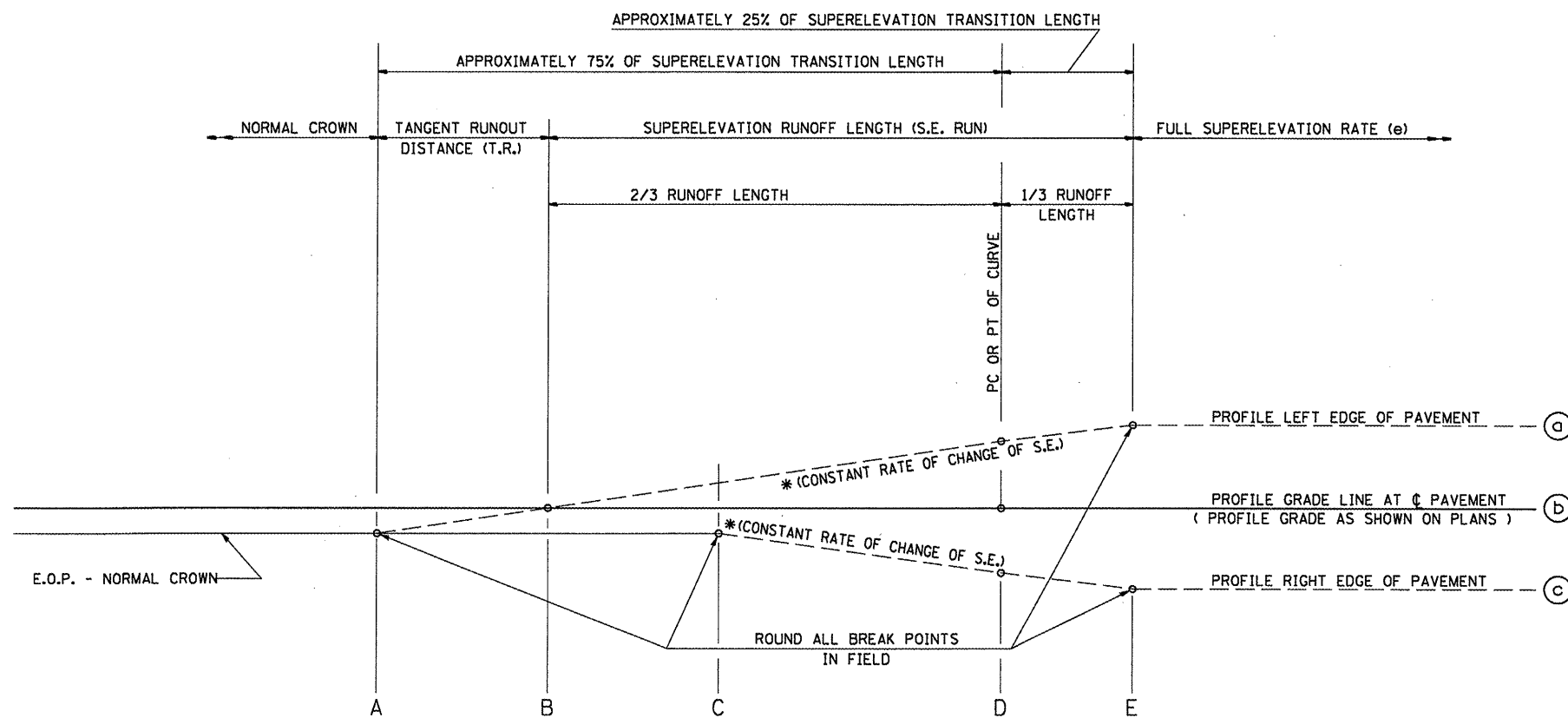
(EXISTING)

FULL S.E.: (S.E.#7 = 6.0%)
 STA. 710+54.28 TO 719+26.30
 S.E. TRANSITION:
 STA. 708+14.28 TO 710+54.28
 STA. 719+26.30 TO 721+66.30

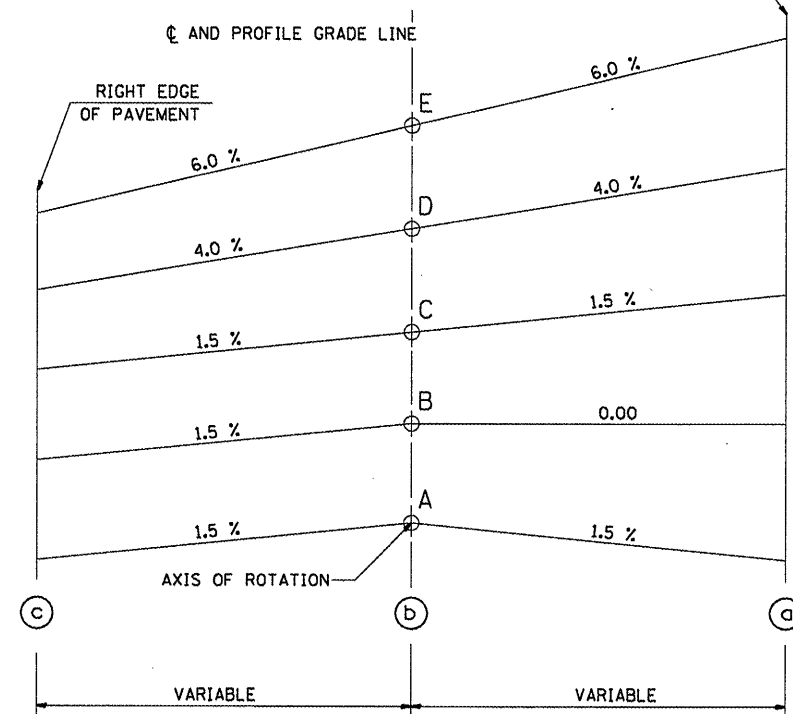
TABLE OF SUPERELEVATION BREAK POINT LOCATIONS - SE #7							
CURVE NO.	e	A	B	C	D	E	TRANSITION
39	6.00%	708+19.87	708+61.47	709+03.07	709+72.27	710+27.67	Trans. In
39	6.00%	721+53.84	721+12.24	720+70.64	720+01.44	719+46.04	Trans. Out



EXIST. CURVE 39
 PI STA. = 715+04.47
 $\Delta = 35^\circ 59' 26''$ (RT)
 $D = 3^\circ 29' 49''$
 $R = 1,638.40'$
 $T = 532.20'$
 $L = 1,029.17'$
 $E = 84.27'$
 $e = 6\%$
 $T.R. = 42'$
 $S.E. RUN = 166'$
 P.C. STA. = 709+72.27
 P.T. STA. = 720+01.44



TYPICAL PROFILE - S.E. TRANSITION



FILE NAME =
 USER NAME = coxjw
 DESIGNED - RSC
 DRAWN - RSC
 CHECKED - BSH
 PLOT SCALE = 100.0000' / IN.
 PLOT DATE = Mar-18-2010 01:15:14PM

DESIGNED - RSC
 DRAWN - RSC
 CHECKED - BSH
 DATE -
 REVISED -
 REVISED -
 REVISED -
 REVISED -

STATE OF ILLINOIS
 DEPARTMENT OF TRANSPORTATION

SUPERELEVATION DETAILS

SCALE: SHEET NO. 7 OF 12 SHEETS STA. 708+00.00 TO STA. 722+00.00

F.A.P. RTE. 558	SECTION	COUNTY PIKE	TOTAL SHEETS 77	SHEET NO. 65
CONTRACT NO. 72814				ILLINOIS FED. AID PROJECT