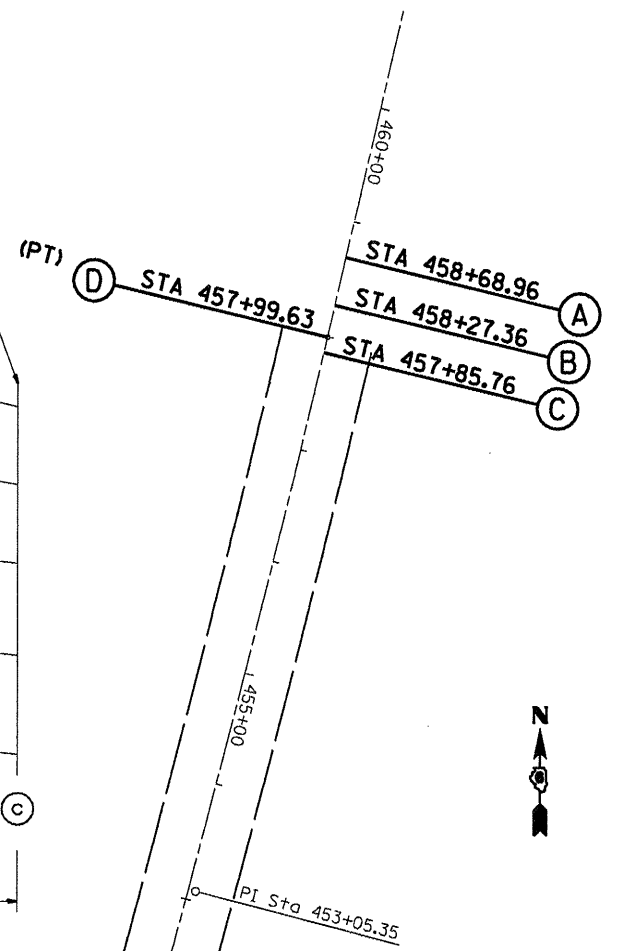
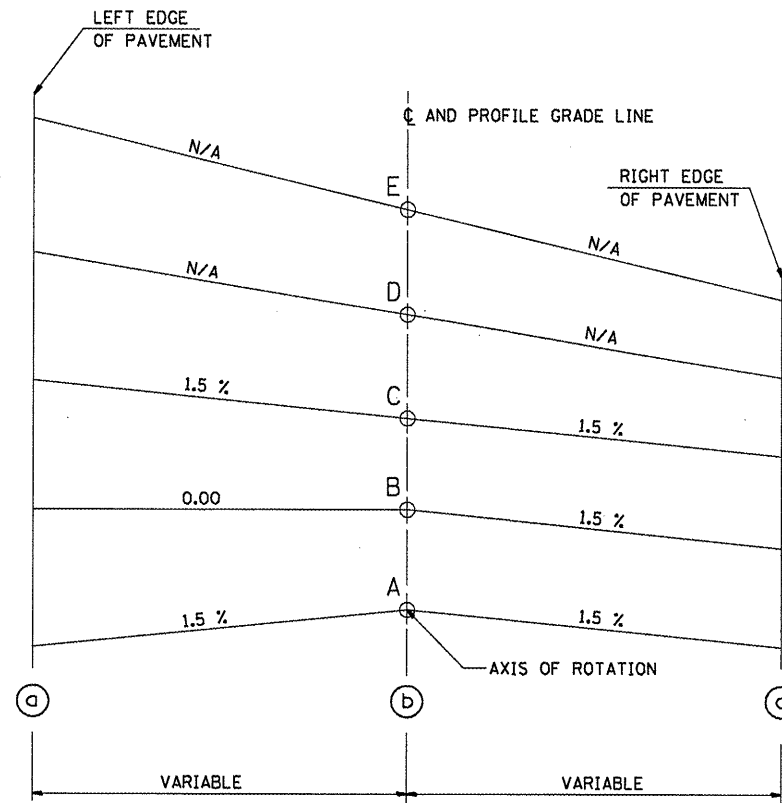
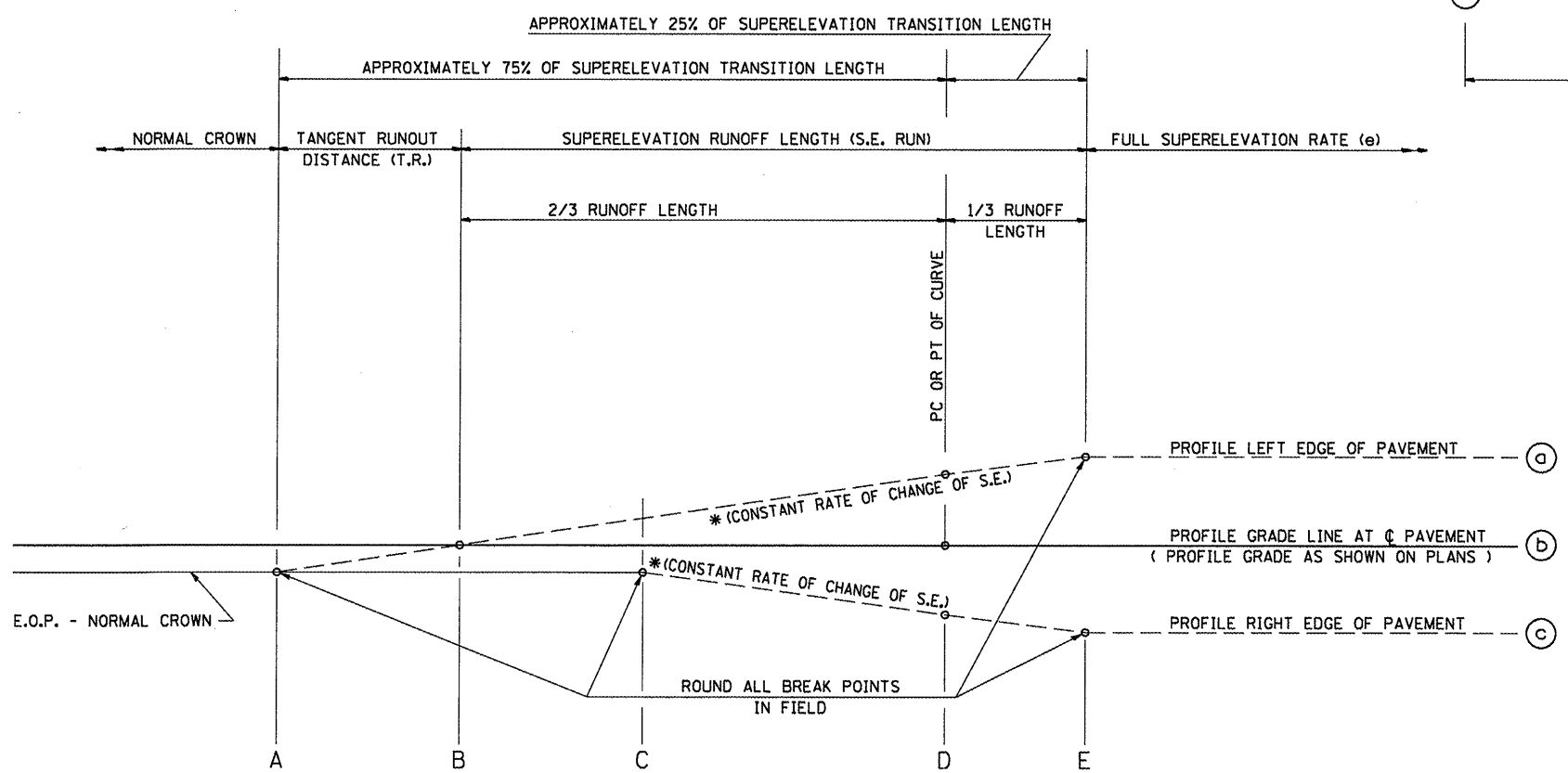
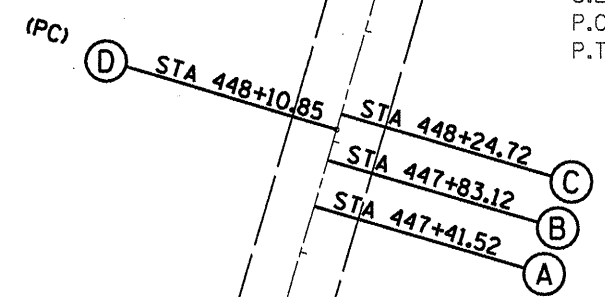


TABLE OF SUPERELEVATION BREAK POINT LOCATIONS - SE #11							
CURVE NO.	e	A	B	C	D	E	TRANSITION
23	1.50%	447+41.52	447+83.12	448+24.72	448+10.85	N/A	Trans. In
23	1.50%	458+68.96	458+27.36	457+85.76	457+99.63	N/A	Trans. Out



EXIST. CURVE 23  
 PI STA. = 453+05.35  
 $\Delta = 2^\circ 59' 44''$  (LT)  
 $D = 0^\circ 18' 11''$   
 $R = 18,912.26'$   
 $T = 494.50'$   
 $L = 988.77'$   
 $E = 6.46'$   
 $e = 1.50\%$   
 $T.R. = 42'$   
 $S.E. RUN = 42'$   
 $P.C. STA. = 448+10.85$   
 $P.T. STA. = 457+99.63$

(EXISTING)  
 FULL S.E.: (S.E.#11 = 1.25%)  
 STA. 448+44.29 TO 457+06.72  
 S.E. TRANSITION:  
 STA. 446+04.29 TO 448+44.29  
 STA. 457+06.72 TO 459+46.72



TYPICAL PROFILE - S.E. TRANSITION