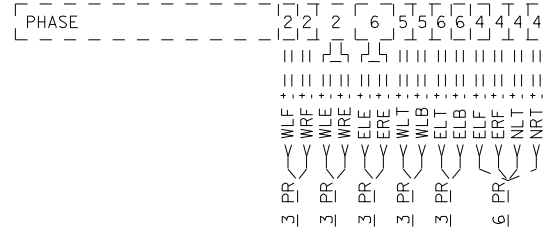
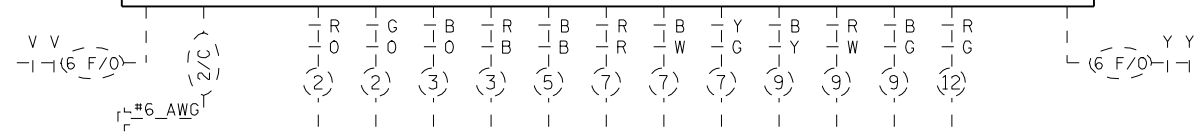


DETECTORS



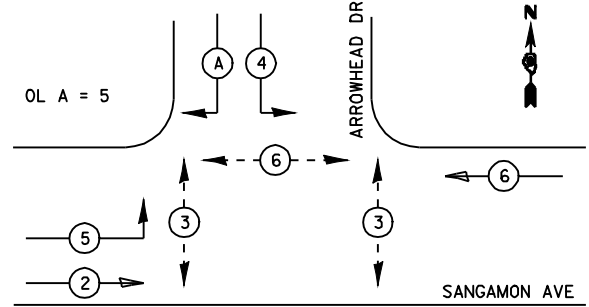
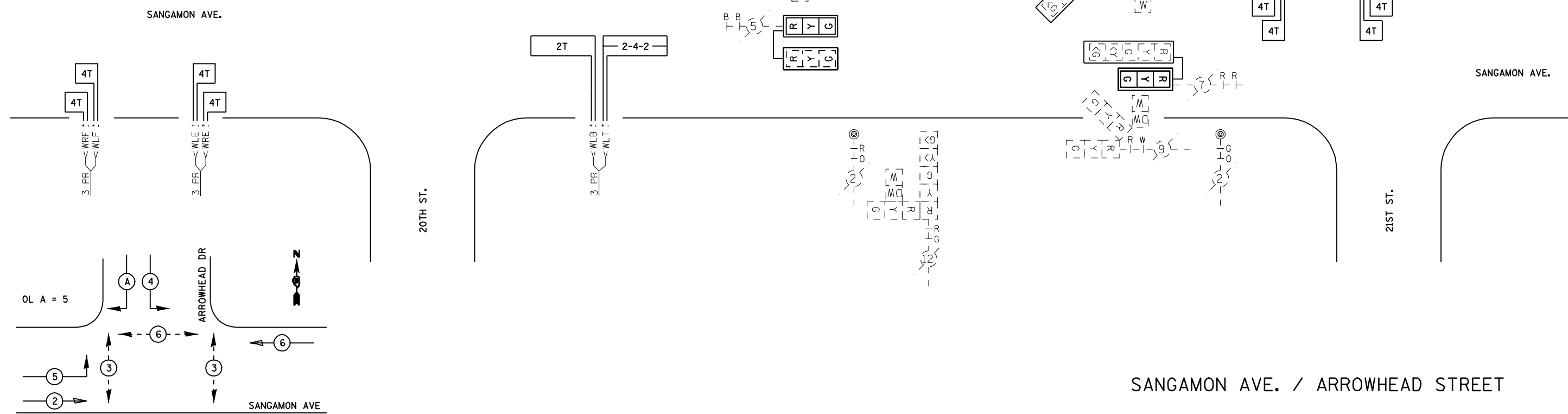
PROPOSED CONTROLLER



REMOVE EXISTING TRAFFIC SIGNAL EQUIPMENT

- 4 EACH TRAFFIC SIGNAL BACKPLATE
- 1 EACH CONTROLLER AND CABINET

REMOVED BACKPLATES SHALL BECOME PROPERTY OF THE CONTRACTOR. REMOVED CONTROLLER AND CABINET SHALL BE DELIVERED TO CWLP, 1600 GROTH ST. SPRINGFIELD, IL



PROPOSED PHASE DESIGNATION DIAGRAM

PHASE 3 IS EXCLUSIVE PED

| | | | | | | | | | | | | |
|--|-----------------------------|------------|-----------|---|---|-----------|------|--------------------|---------------------------|-----------------|-----------------|--------------|
| FILE NAME = e:\pwork\pwidot\LAUGHLINRL\dms25514\672909-shr-ta.dgn | USER NAME = laughlinr1 | DESIGNED - | REVISED - | STATE OF ILLINOIS DEPARTMENT OF TRANSPORTATION | SIGNAL WIRING DIAGRAM F.A.P. 667 (SANGAMON AVE.) | | | F.A.P. RTE. 667 | SECTION 792(RS-4) | COUNTY SANGAMON | TOTAL SHEETS 43 | SHEET NO. 36 |
| | PLOT SCALE = 40.0000' / IN. | CHECKED - | REVISED - | | | | | CONTRACT NO. 72909 | | | | |
| PLOT DATE = Mar-25-2010 10:53:27AM | DATE - | REVISED - | REVISED - | SCALE: | SHEET NO. | OF SHEETS | STA. | TO STA. | ILLINOIS FED. AID PROJECT | | | |