


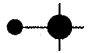
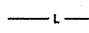
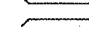
F.A.P. RTE.	SECTION	COUNTY	TOTAL SHEETS	SHEET NO.
322	11-12	CHRISTIAN	284	143
STA.		TO STA.		
FED. ROAD DIST. NO.		ILLINOIS FED. AID PROJECT		

PERFORMANCE REQUIREMENTS

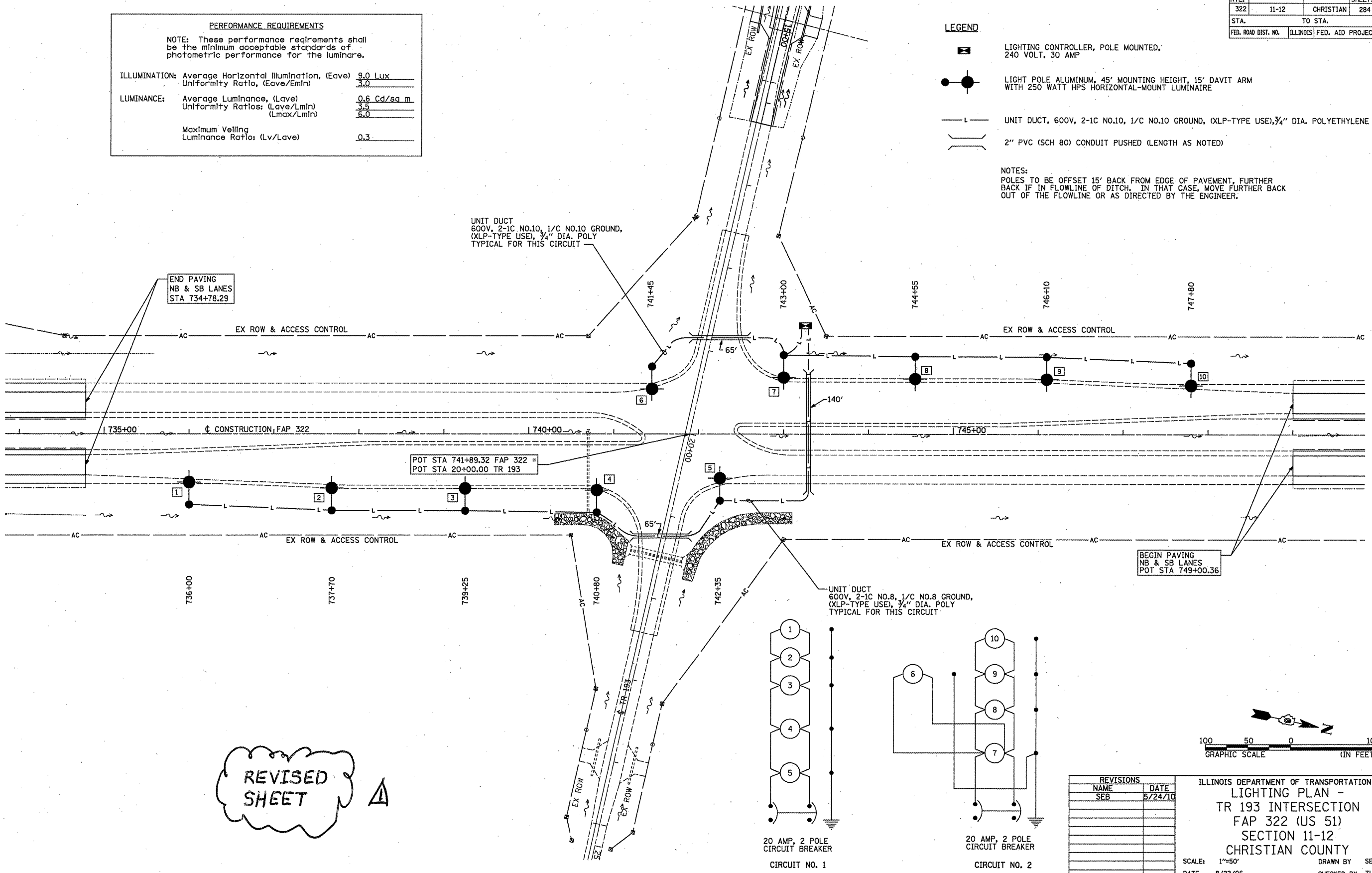
NOTE: These performance requirements shall be the minimum acceptable standards of photometric performance for the luminaire.

ILLUMINATION:	Average Horizontal Illumination, (Eave)	9.0 Lux
	Uniformity Ratio, (Eave/Emin)	3.0
LUMINANCE:	Average Luminance, (Lave)	0.6 Cd/sq m.
	Uniformity Ratios: (Lave/Lmin)	3.5
	(Lmax/Lmin)	6.0
	Maximum Veiling Luminance Ratio: (Lv/Lave)	0.3

LEGEND

-  LIGHTING CONTROLLER, POLE MOUNTED, 240 VOLT, 30 AMP
-  LIGHT POLE ALUMINUM, 45' MOUNTING HEIGHT, 15' DAVIT ARM WITH 250 WATT HPS HORIZONTAL-MOUNT LUMINAIRE
-  UNIT DUCT, 600V, 2-1C NO.10, 1/C NO.10 GROUND, (XLP-TYPE USE), 3/4" DIA. POLYETHYLENE
-  2" PVC (SCH 80) CONDUIT PUSHED (LENGTH AS NOTED)

NOTES:
 POLES TO BE OFFSET 15' BACK FROM EDGE OF PAVEMENT, FURTHER BACK IF IN FLOWLINE OF DITCH. IN THAT CASE, MOVE FURTHER BACK OUT OF THE FLOWLINE OR AS DIRECTED BY THE ENGINEER.



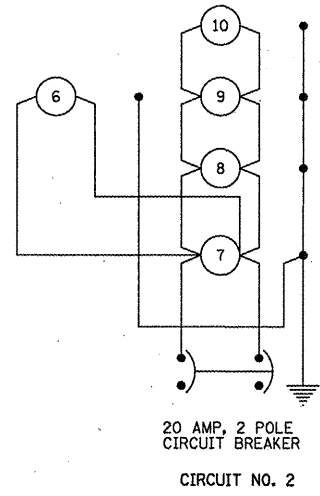
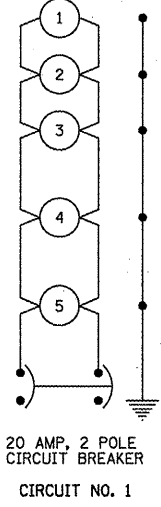
END PAVING
 NB & SB LANES
 STA 734+78.29

UNIT DUCT
 600V, 2-1C NO.10, 1/C NO.10 GROUND,
 (XLP-TYPE USE), 3/4" DIA. POLY
 TYPICAL FOR THIS CIRCUIT

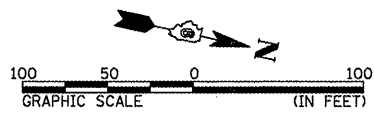
POT STA 741+89.32 FAP 322 =
 POT STA 20+00.00 TR 193

BEGIN PAVING
 NB & SB LANES
 POT STA 749+00.36

UNIT DUCT
 600V, 2-1C NO.8, 1/C NO.8 GROUND,
 (XLP-TYPE USE), 3/4" DIA. POLY
 TYPICAL FOR THIS CIRCUIT



REVISED SHEET



REVISIONS	
NAME	DATE
SEB	5/24/10

ILLINOIS DEPARTMENT OF TRANSPORTATION
 LIGHTING PLAN -
 TR 193 INTERSECTION
 FAP 322 (US 51)
 SECTION 11-12
 CHRISTIAN COUNTY

SCALE: 1"=50'
 DATE: 8/22/06

DRAWN BY: SEB
 CHECKED BY: TLD

5-25-10