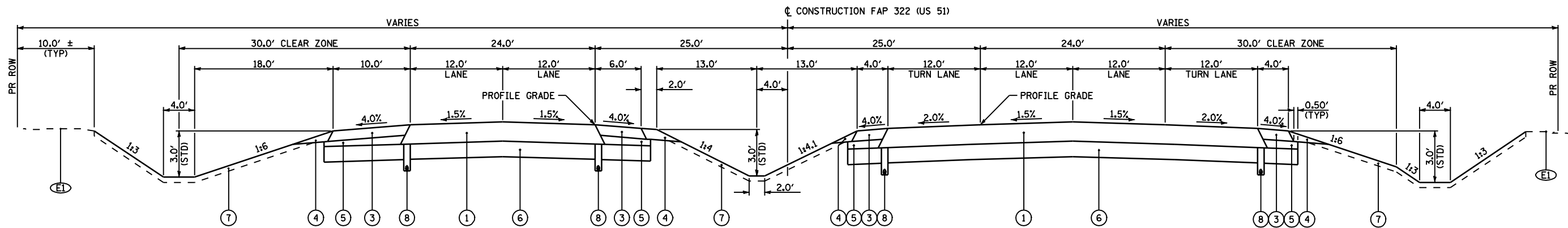
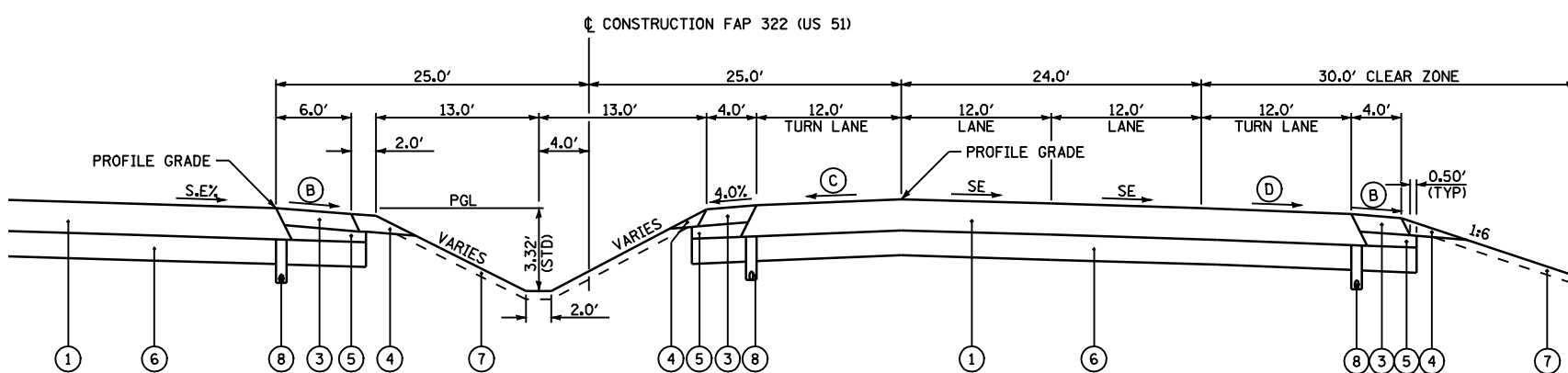


F.A.P. RTE.	SECTION	COUNTY	TOTAL SHEETS	SHEET NO.
322	11-12	CHRISTIAN	284	35
STA.	TO STA.			
FED. ROAD DIST. NO.	ILLINOIS	FED. AID PROJECT		

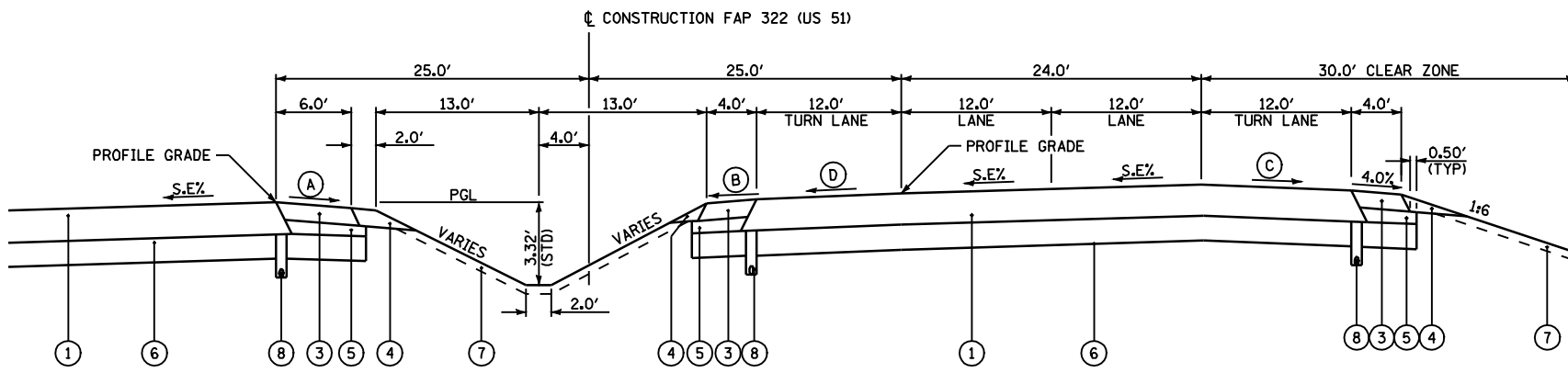


FAP 322 (US 51) TYPICAL SECTION WITH RT AND LT TURN LANES



FAP 322 (US 51) TYPICAL SUPERELEVATED SECTION WITH RT AND LT TURN LANES

LT TURN LANE ON HIGH SIDE
RT TURN LANE ON LOW SIDE



FAP 322 (US 51) TYPICAL SUPERELEVATED SECTION WITH RT AND LT TURN LANES

LT TURN LANE ON LOW SIDE
RT TURN LANE ON HIGH SIDE

LEGEND

① HOT-MIX ASPHALT PAVEMENT (FULL-DEPTH), 13 3/4" [SEE MIXTURE REQUIREMENTS AND PAVING LIFT DIAGRAMS ON SHEET 3 FOR THE PAVEMENT COMPOSITION]	Ⓔ EXISTING GROUND
② HOT-MIX ASPHALT PAVEMENT (FULL-DEPTH), 9 1/4" [SEE MIXTURE REQUIREMENTS AND PAVING LIFT DIAGRAMS ON SHEET 3 FOR THE PAVEMENT COMPOSITION]	Ⓕ EXISTING HMA SURFACE, 1 1/2"
③ HOT-MIX ASPHALT SHOULDERS, 8"	Ⓖ EXISTING HMA SURFACE, VARIES 3" - 6"
④ AGGREGATE SHOULDERS, TYPE B	Ⓗ EXISTING 9'-6"-9" PCC CONCRETE PAVEMENT
⑤ SUB-BASE GRANULAR MATERIAL, TYPE C	Ⓘ EXISTING PCC BASE COURSE WIDENING, 9"
⑥ PROCESSING LIME MODIFIED SOILS, 12"	Ⓝ EXISTING HMA SHOULDERS, 8" WITH OVERLAY
⑦ TOPSOIL FURNISH AND PLACE, 4"	Ⓖ EXISTING AGGREGATE SHOULDERS, VARIABLE DEPTH
⑧ PIPE UNDERDRAINS, 4" (STD 601001)	Ⓗ EXISTING HMA SHOULDERS, 8"
⑨ AGGREGATE BASE COURSE, TYPE A, 10"	Ⓘ EXISTING PIPE UNDERDRAINS
⑩ BITUMINOUS SURFACE TREATMENT CLASS A-3	Ⓝ EXISTING HMA PAVEMENT, 13 3/4"
⑪ HOT-MIX ASPHALT SURFACE COURSE, MIX "D", NTO, 2"	Ⓖ REMOVE EXISTING HMA SHOULDERS
⑫ HOT-MIX ASPHALT BASE COURSE WIDENING, 12" (WHEN WIDTH < 6')	Ⓗ REMOVE EXISTING HMA PAVEMENT, 13 3/4" AND HMA SHOULDERS, 8"
⑬ HOT-MIX ASPHALT BASE COURSE, 11 3/4" (WHEN WIDTH ≥ 6')	
⑭ PORTLAND CEMENT CONCRETE PAVEMENT 8" (JOINTED), STD 420101	
⑮ HOT-MIX ASPHALT SURFACE REMOVAL, 2"	
⑯ COMBINATION CONCRETE CURB AND GUTTER, TYPE B-6.24, STD 606001	
⑰ AGGREGATE SURFACE COURSE, TYPE A, 6"	
⑱ HOT-MIX ASPHALT BASE COURSE WIDENING, 9" (WHEN WIDTH < 6')	
⑲ HOT-MIX ASPHALT BASE COURSE, 8 1/2" (WHEN WIDTH ≥ 6')	
⑳ AGGREGATE BASE COURSE, TYPE A, 8"	
㉑ HOT-MIX ASPHALT SURFACE COURSE, MIX "D", N50, 2"	
Ⓐ SHOULDER SLOPE - HIGH SIDE OF SE: WHEN THE SE RATE OF THE PAVEMENT IS BETWEEN 0 AND 4% THE SHOULDER SHALL BE SLOPED AT 4%. WHEN THE SE RATE OF THE PAVEMENT EXCEEDS 4% THE SHOULDER SHALL BE SLOPED SO THAT THE ALGEBRAIC DIFFERENCE BETWEEN THE PAVEMENT AND SHOULDER SHALL BE 8%.	
Ⓑ SHOULDER SLOPE - LOW SIDE OF SE: SLOPE SHALL BE THE SAME AS THE SE BUT NOT LESS THAN 4%.	
Ⓒ TURN LANE SLOPE - HIGH SIDE OF SE: WHEN THE SE RATE OF THE PAVEMENT IS BETWEEN 0 AND 2% THE TURN LANE SHALL BE SLOPED AT 2%. WHEN THE SE RATE OF THE PAVEMENT EXCEEDS 2% THE TURN LANE SHALL BE SLOPED SO THAT THE ALGEBRAIC DIFFERENCE BETWEEN THE PAVEMENT AND TURN LANE SHALL BE 4%.	
Ⓓ TURN LANE SLOPE - LOW SIDE OF SE: SLOPE SHALL BE THE SAME AS THE SE BUT NOT LESS THAN 2%.	

NOT TO SCALE

REVISIONS	
NAME	DATE

ILLINOIS DEPARTMENT OF TRANSPORTATION
 TYPICAL SECTIONS
 SHEET 4 OF 9
 FAP 322 (US 51)
 SECTION 11-12
 CHRISTIAN COUNTY

SCALE: NONE
 DATE: 8/22/06

DRAWN BY: SEB
 CHECKED BY: TLD