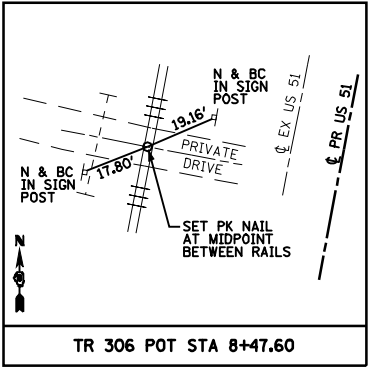
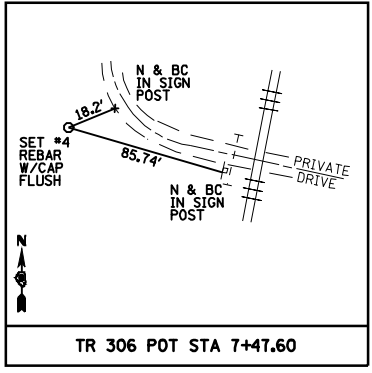
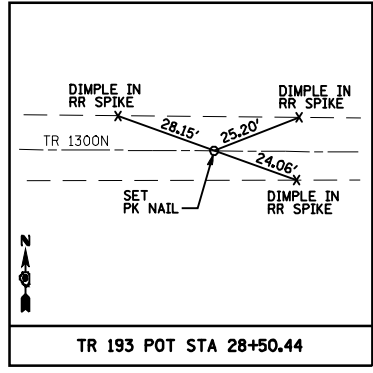
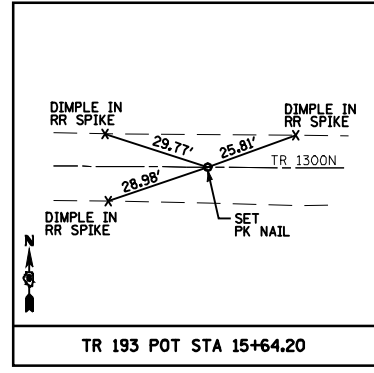
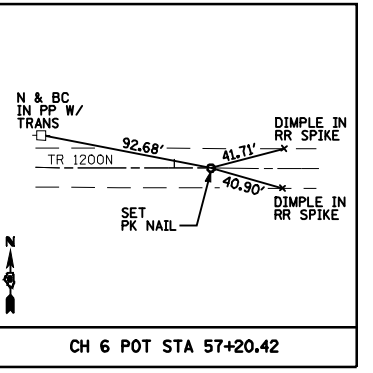
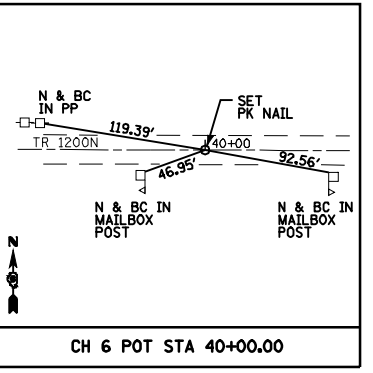
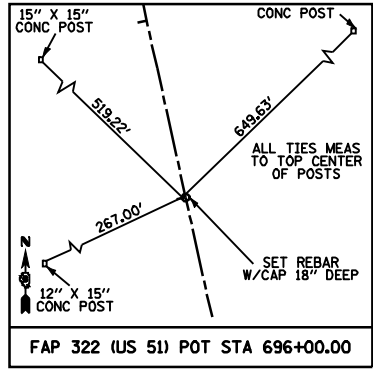
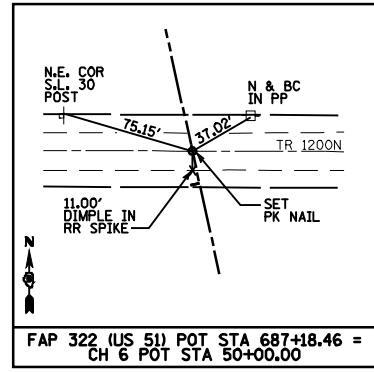
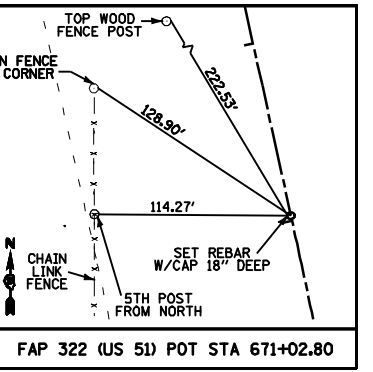
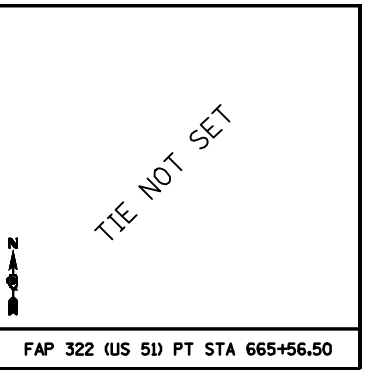
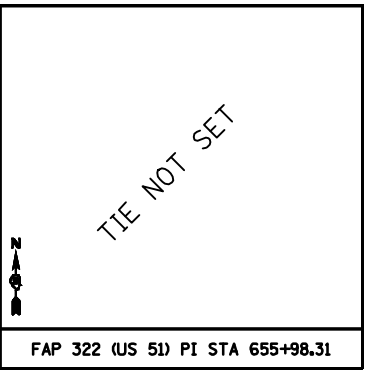
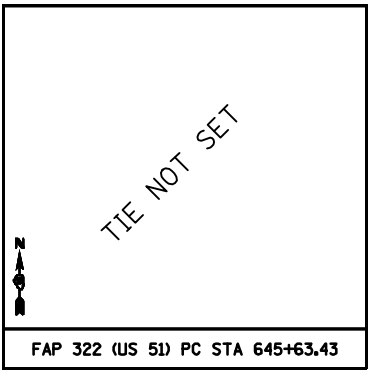
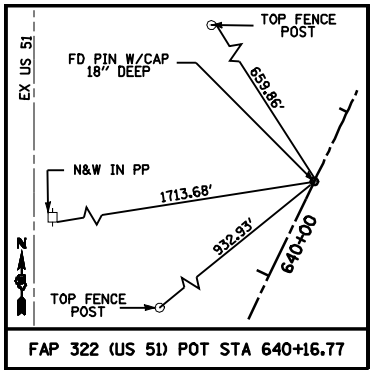
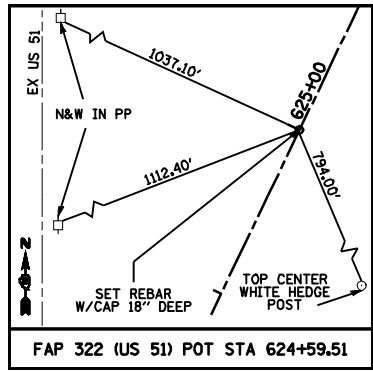
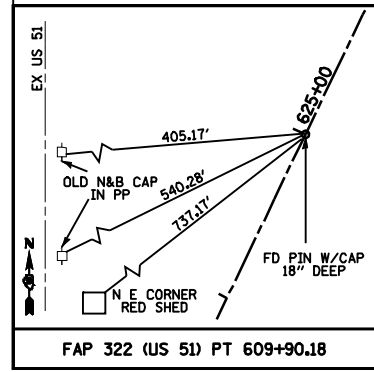
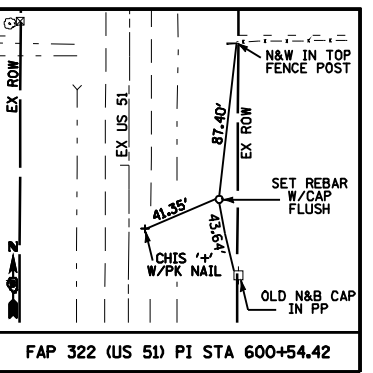
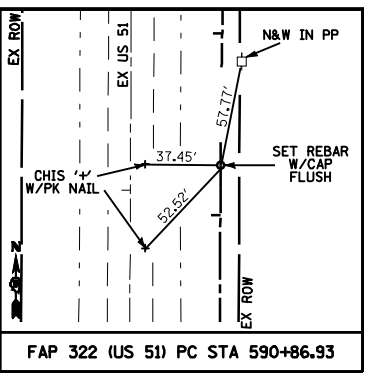
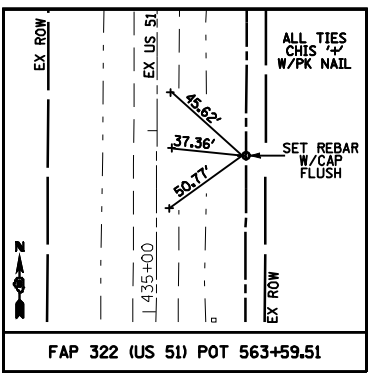
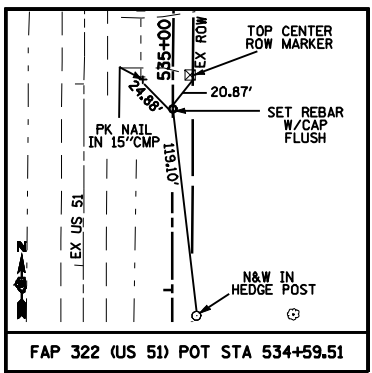
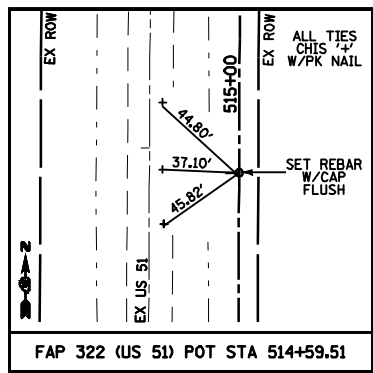
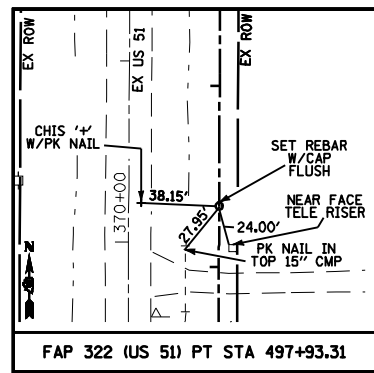


F.A.P. RTE.	SECTION	COUNTY	TOTAL SHEETS	SHEET NO.
322	11-12	CHRISTIAN	284	44
STA.		TO STA.		
FED. ROAD DIST. NO.		ILLINOIS FED. AID PROJECT		



REVISIONS	
NAME	DATE

ILLINOIS DEPARTMENT OF TRANSPORTATION
 HORIZONTAL CONTROL TIES
 FAP 322 (US 51)
 SECTION 11-12
 CHRISTIAN COUNTY
 SCALE: NONE
 DATE: 8/22/06
 DRAWN BY: BLJ
 CHECKED BY: TLD

Mo-15-2018 01465142M

SFILE4