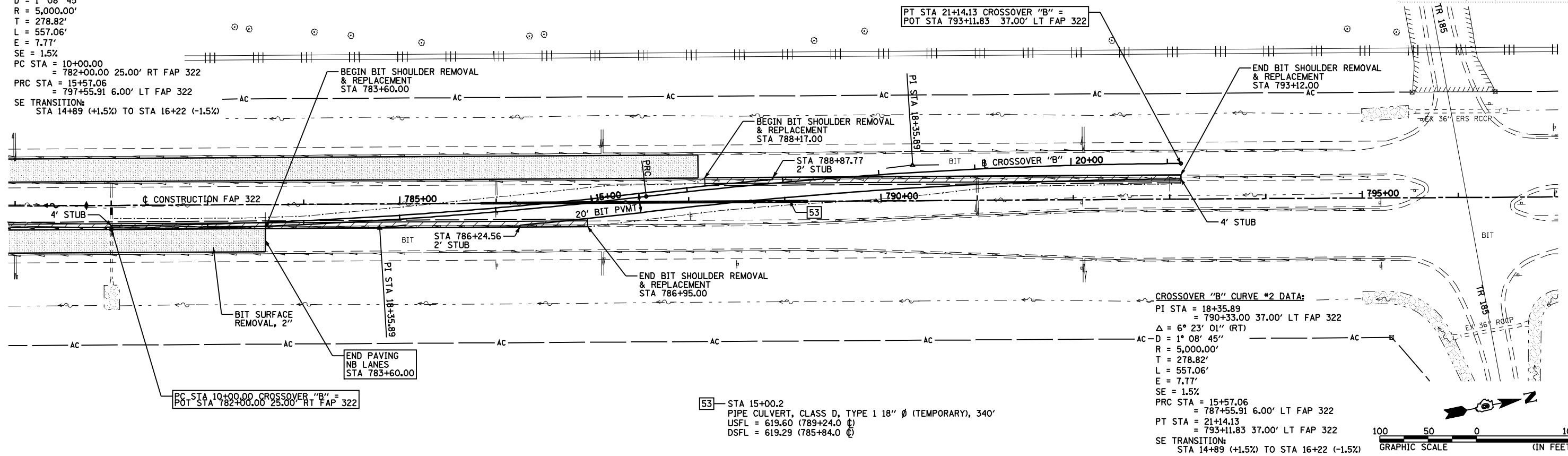


CROSSOVER "B" CURVE #1 DATA:
 PI STA = 12+78.82
 = 784+78.82 25.00' RT FAP 322
 $\Delta = 6^\circ 23' 01''$ (LT)
 D = 1° 08' 45"
 R = 5,000.00'
 T = 278.82'
 L = 557.06'
 E = 7.77'
 SE = 1.5%
 PC STA = 10+00.00
 = 782+00.00 25.00' RT FAP 322
 PRC STA = 15+57.06
 = 797+55.91 6.00' LT FAP 322
 SE TRANSITION:
 STA 14+89 (+1.5%) TO STA 16+22 (-1.5%)

F.A.P. RTE.	SECTION	COUNTY	TOTAL SHEETS	SHEET NO.
322	11-12	CHRISTIAN	284	53
STA.	TO STA.			
FED. ROAD DIST. NO.	ILLINOIS FED. AID PROJECT			

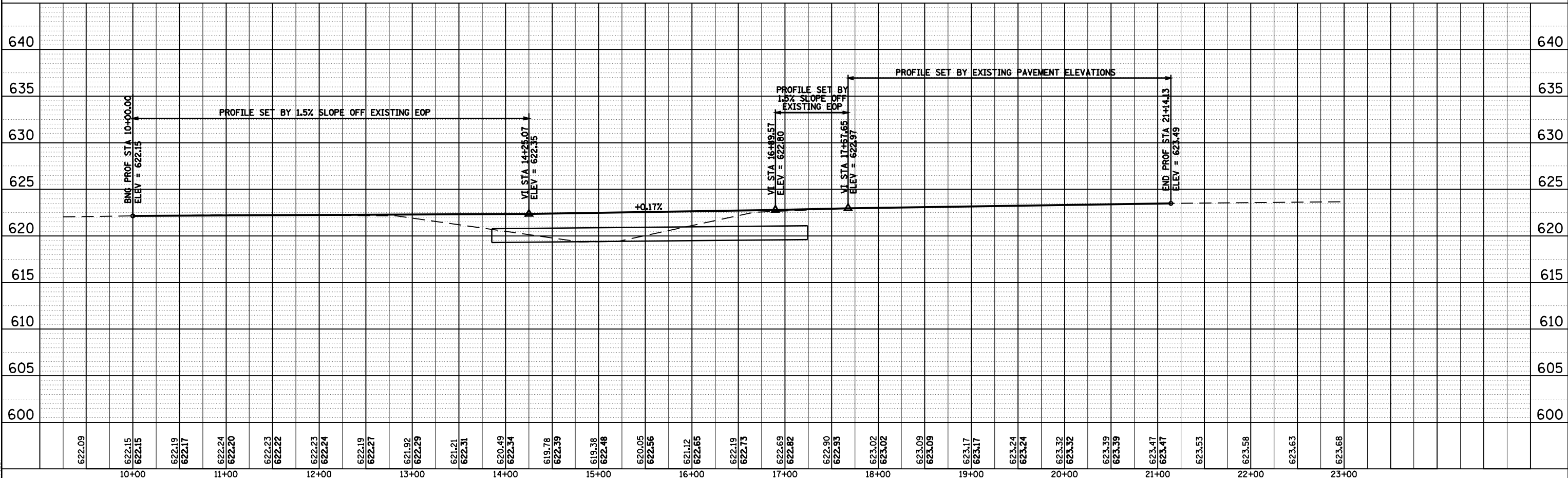
DATE	BY	REVISION

DATE	BY	REVISION



CROSSOVER "B" CURVE #2 DATA:
 PI STA = 18+35.89
 = 790+33.00 37.00' LT FAP 322
 $\Delta = 6^\circ 23' 01''$ (RT)
 D = 1° 08' 45"
 R = 5,000.00'
 T = 278.82'
 L = 557.06'
 E = 7.77'
 SE = 1.5%
 PRC STA = 15+57.06
 = 787+55.91 6.00' LT FAP 322
 PT STA = 21+14.13
 = 793+11.83 37.00' LT FAP 322
 SE TRANSITION:
 STA 14+89 (+1.5%) TO STA 16+22 (-1.5%)

53— STA 15+00.2
 PIPE CULVERT, CLASS D, TYPE 1 18" Ø (TEMPORARY), 340'
 USFL = 619.60 (789+24.0) ☉
 DSFL = 619.29 (785+84.0) ☉



STAGE 1 - CROSSOVER "B" STA 10+00.00 TO STA 21+14