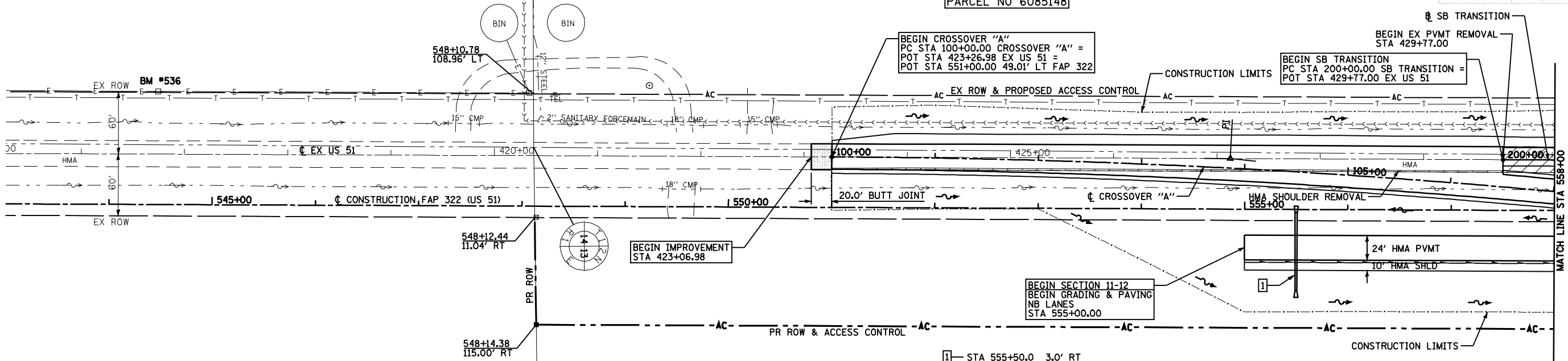


|                     |                           |           |              |           |
|---------------------|---------------------------|-----------|--------------|-----------|
| F.A.P. RTE.         | SECTION                   | COUNTY    | TOTAL SHEETS | SHEET NO. |
| 322                 | 11-12                     | CHRISTIAN | 284          | 58        |
| STA.                | TO STA.                   |           |              |           |
| FED. ROAD DIST. NO. | ILLINOIS FED. AID PROJECT |           |              |           |

AGRI ENTERPRISES, INC.

CLETA MAXINE ROYER  
[PARCEL NO 6085148]

SEE SHEETS 75 & 76 FOR  
CROSSOVER "A"  
&  
SB TRANSITION DETAILS



BEGIN IMPROVEMENT  
STA 423+06.98

BEGIN CROSSOVER "A"  
PC STA 100+00.00 CROSSOVER "A" =  
POT STA 423+26.98 EX US 51 =  
POT STA 551+00.00 49.01' LT FAP 322

BEGIN SB TRANSITION  
PC STA 200+00.00 SB TRANSITION =  
POT STA 429+77.00 EX US 51

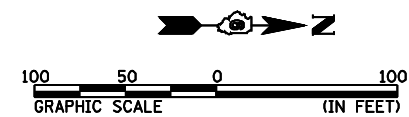
BEGIN SECTION 11-12  
BEGIN GRADING & PAVING  
NB LANES  
STA 555+00.00

1 - STA 555+50.0 3.0' RT  
PIPE CULVERT, CLASS A, TYPE 2, 24"Ø X 76'  
USFL = 638.17 DSFL = 637.88  
CONCRETE FLARED END SECTION 24", STD 542301, 2 EACH  
TRENCH BACKFILL, 16.9 CU YD

LA CHARITE FARMS, INC.  
A NEVADA CORPORATION

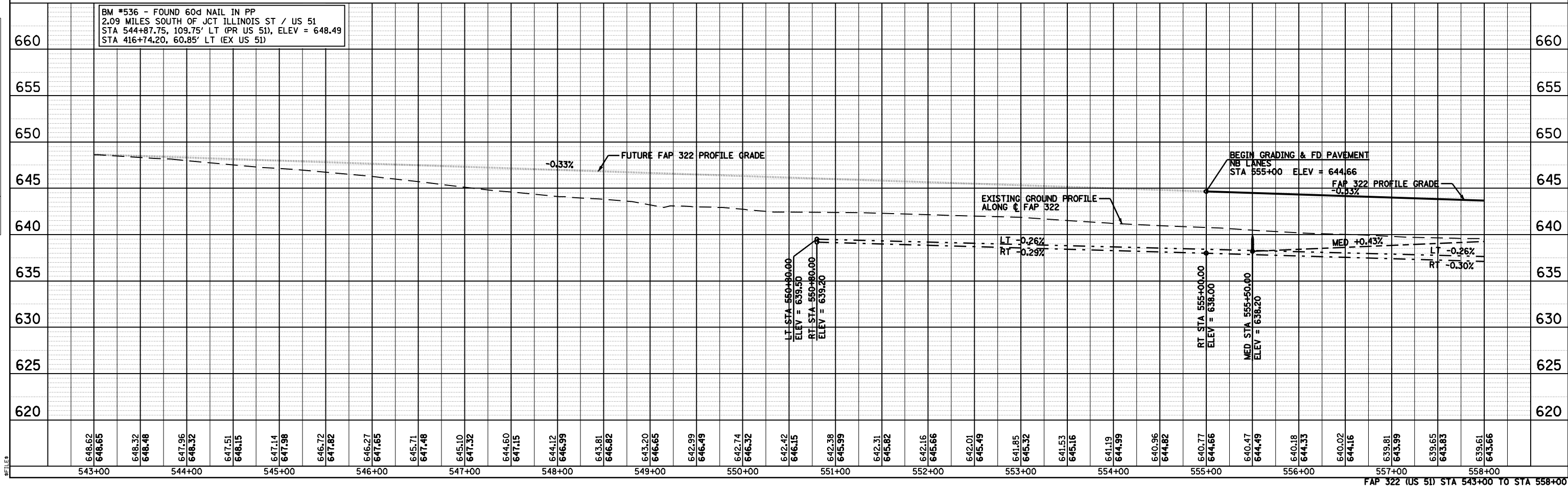
CLETA MAXINE ROYER  
[PARCEL NO 6085148]

NW 1/4 SEC 36, T13N, R1E, 3RD PM



|               |  |
|---------------|--|
| DATE          |  |
| BY            |  |
| PLAN          |  |
| NOTE BOOK NO. |  |
| DATE          |  |
| BY            |  |
| PLAN          |  |
| NOTE BOOK NO. |  |
| DATE          |  |
| BY            |  |
| PLAN          |  |
| NOTE BOOK NO. |  |

|               |  |
|---------------|--|
| DATE          |  |
| BY            |  |
| PROFILE       |  |
| NOTE BOOK NO. |  |
| DATE          |  |
| BY            |  |
| PROFILE       |  |
| NOTE BOOK NO. |  |



BM #536 - FOUND 60d NAIL IN PP  
2.09 MILES SOUTH OF JCT ILLINOIS ST / US 51  
STA 544+87.75, 109.75' LT (PR US 51), ELEV = 648.49  
STA 416+74.20, 60.85' LT (EX US 51)

FAP 322 (US 51) STA 543+00 TO STA 558+00