

F.A.P. RTE.	SECTION	COUNTY	TOTAL SHEETS	SHEET NO.
322	11-12	CHRISTIAN	284	64
STA.	TO STA.			
FED. ROAD DIST. NO.	ILLINOIS FED. AID PROJECT			

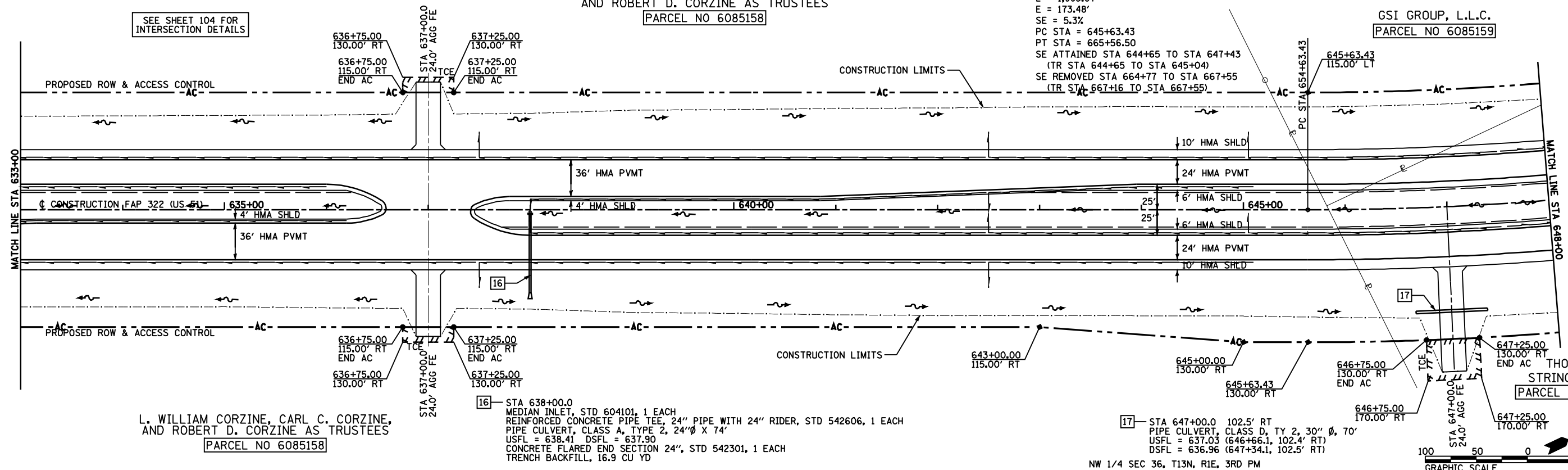
FAP 322 (US 51) CURVE *M2 DATA:
 PI STA = 655+98.31
 $\Delta = 38^\circ 03' 53''$ (LT)
 $D = 1^\circ 54' 35''$
 $R = 3,000.00'$
 $T = 1,034.88'$
 $L = 1,993.07'$
 $E = 173.48'$
 $SE = 5.3\%$
 PC STA = 645+63.43
 PT STA = 665+56.50
 SE ATTAINED STA 644+65 TO STA 647+43
 (TR STA 644+65 TO STA 645+04)
 SE REMOVED STA 664+77 TO STA 667+55
 (TR STA 667+16 TO STA 667+55)

L. WILLIAM CORZINE, CARL C. CORZINE,
 AND ROBERT D. CORZINE AS TRUSTEES
 PARCEL NO 6085158

GSI GROUP, L.L.C.
 PARCEL NO 6085159

THOMAS L. STRINGER et al
 PARCEL NO 6085161

SEE SHEET 104 FOR
 INTERSECTION DETAILS



L. WILLIAM CORZINE, CARL C. CORZINE,
 AND ROBERT D. CORZINE AS TRUSTEES
 PARCEL NO 6085158

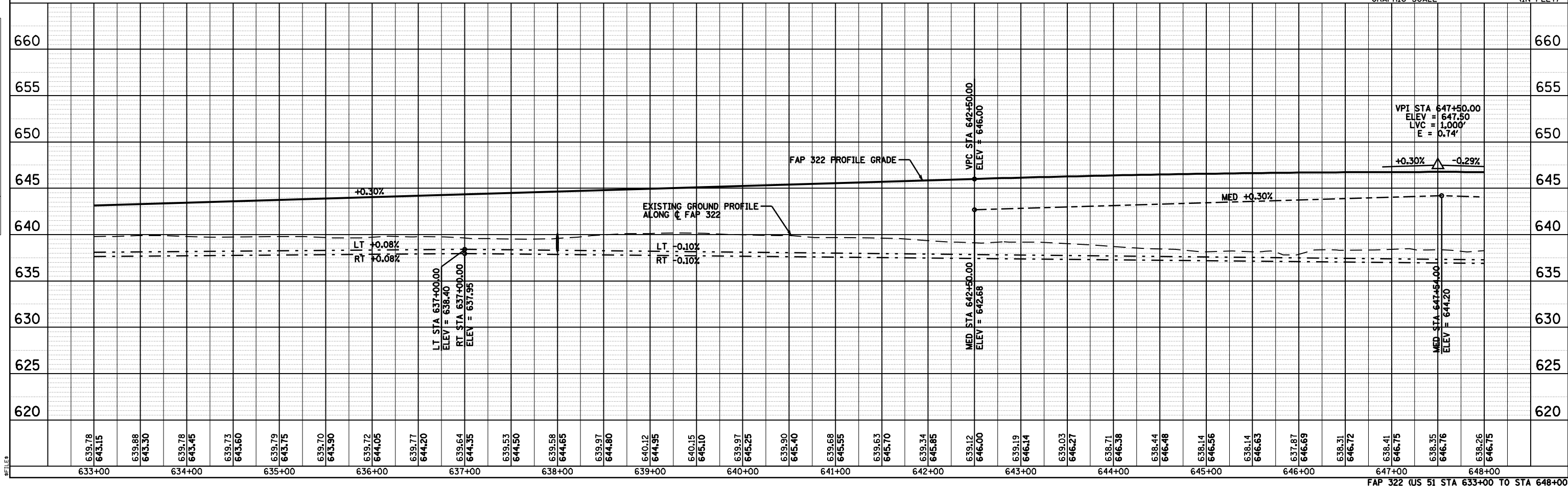
[16] STA 638+00.0
 MEDIAN INLET, STD 604101, 1 EACH
 REINFORCED CONCRETE PIPE TEE, 24" PIPE WITH 24" RIDER, STD 542606, 1 EACH
 PIPE CULVERT, CLASS A, TYPE 2, 24" Ø X 74'
 USFL = 638.41 DSFL = 637.90
 CONCRETE FLARED END SECTION 24", STD 542301, 1 EACH
 TRENCH BACKFILL, 16.9 CU YD

[17] STA 647+00.0 102.5' RT
 PIPE CULVERT, CLASS D, TY 2, 30" Ø, 70'
 USFL = 637.03 (646+66.1, 102.4' RT)
 DSFL = 636.96 (647+34.1, 102.5' RT)

NW 1/4 SEC 36, T13N, R1E, 3RD PM
 GRAPHIC SCALE (IN FEET)

DATE	
BY	
PLAN	
NO.	
NO.	
NO.	

DATE	
BY	
PROFILE	
NO.	
NO.	
NO.	



FAP 322 (US 51) STA 633+00 TO STA 648+00