

F.A.P. RTE.	SECTION	COUNTY	TOTAL SHEETS	SHEET NO.
322	11-12	CHRISTIAN	284	67
STA.		TO STA.		
FED. ROAD DIST. NO.		ILLINOIS FED. AID PROJECT		

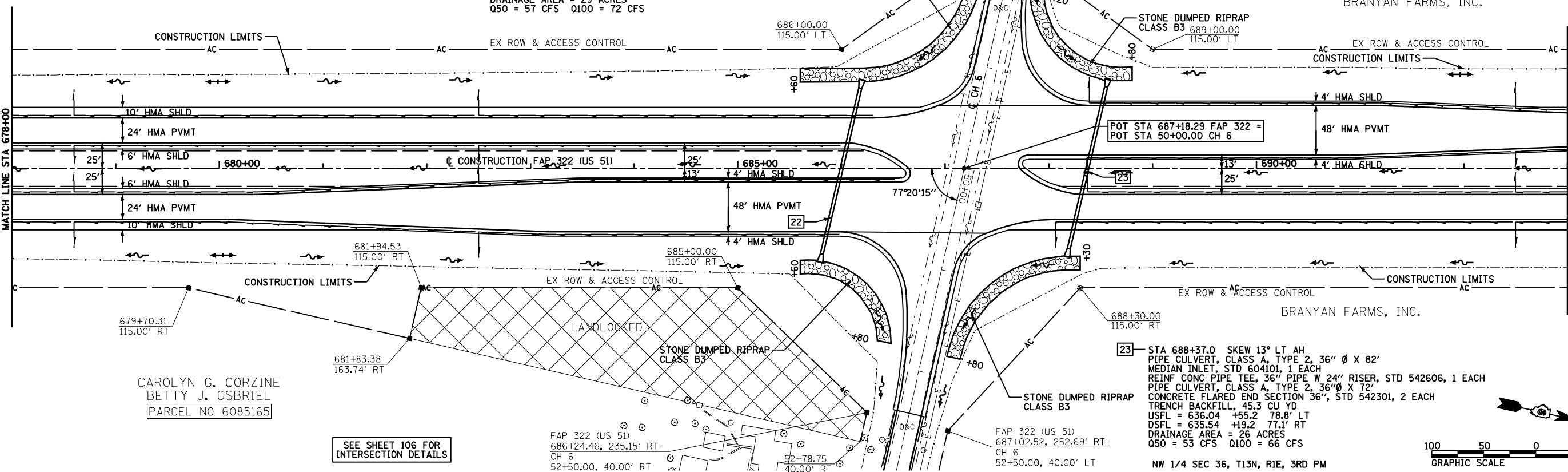
BRANYAN FARMS, INC.
PARCEL NO 6085166

22 STA 686+00.0 SKEW 13° LT AH
PIPE CULVERT, CLASS A, TYPE 2, 36" Ø X 164'
CONCRETE FLARED END SECTION 36", STD 542301, 2 EACH
TRENCH BACKFILL, 64.4 CU YD
USFL = 634.95 +17.3 77.6' LT
DSFL = 634.52 +81.0 82.2' RT
DRAINAGE AREA = 29 ACRES
Q50 = 57 CFS Q100 = 72 CFS

FAP 322 (US 51)
687+23.11, 203.90' LT=
CH 6
48+00.00, 40.00' RT

FAP 322 (US 51)
688+01.16,
186.37' LT=
CH 6
48+00.00,
40.00' LT

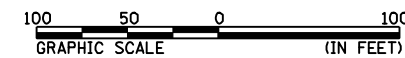
BRANYAN FARMS, INC.



CAROLYN G. CORZINE
BETTY J. GSBRIEL
PARCEL NO 6085165

SEE SHEET 106 FOR
INTERSECTION DETAILS

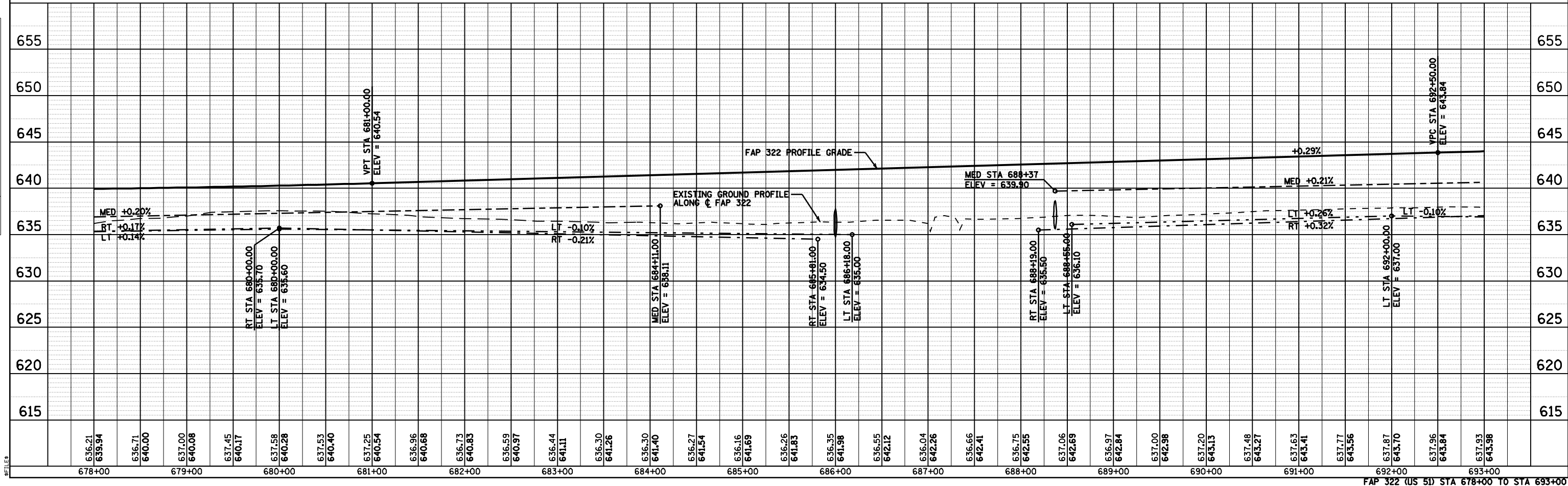
23 STA 688+37.0 SKEW 13° LT AH
PIPE CULVERT, CLASS A, TYPE 2, 36" Ø X 82'
MEDIAN INLET, STD 604101, 1 EACH
REINF CONC PIPE TEE, 36" PIPE W 24" RISER, STD 542606, 1 EACH
PIPE CULVERT, CLASS A, TYPE 2, 36" Ø X 72'
CONCRETE FLARED END SECTION 36", STD 542301, 2 EACH
TRENCH BACKFILL, 45.3 CU YD
USFL = 636.04 +55.2 78.8' LT
DSFL = 635.54 +19.2 77.1' RT
DRAINAGE AREA = 26 ACRES
Q50 = 53 CFS Q100 = 66 CFS



NW 1/4 SEC 36, T13N, R1E, 3RD PM

DATE	BY

DATE	BY



FAP 322 (US 51) STA 678+00 TO STA 693+00