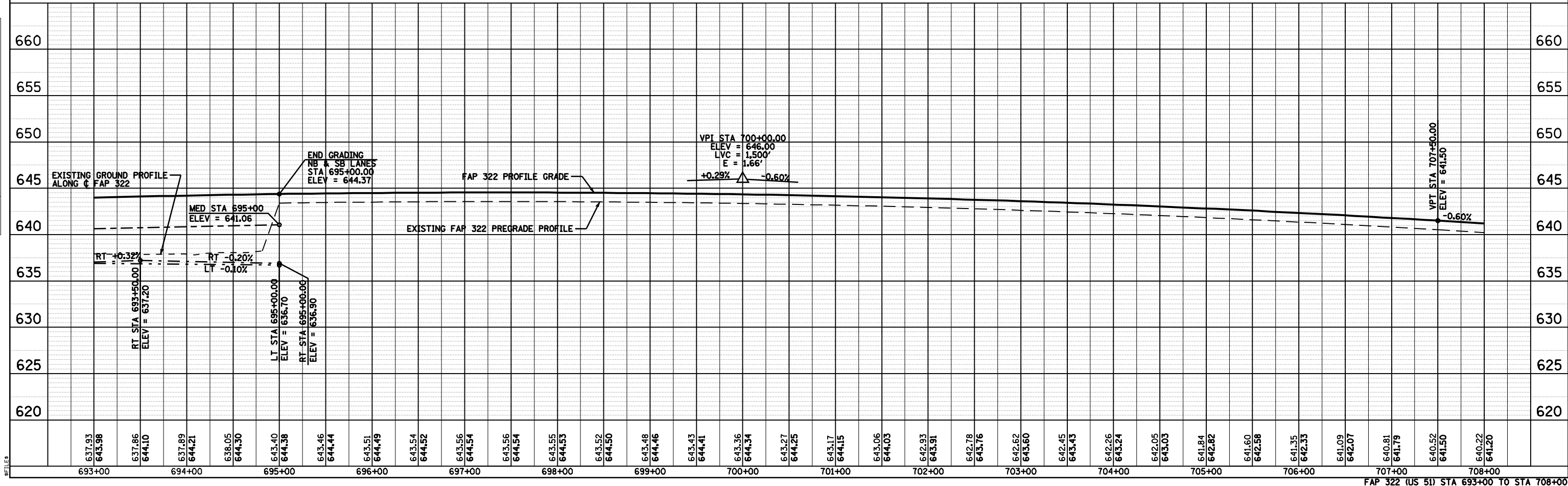
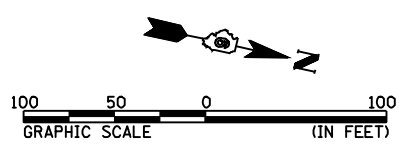
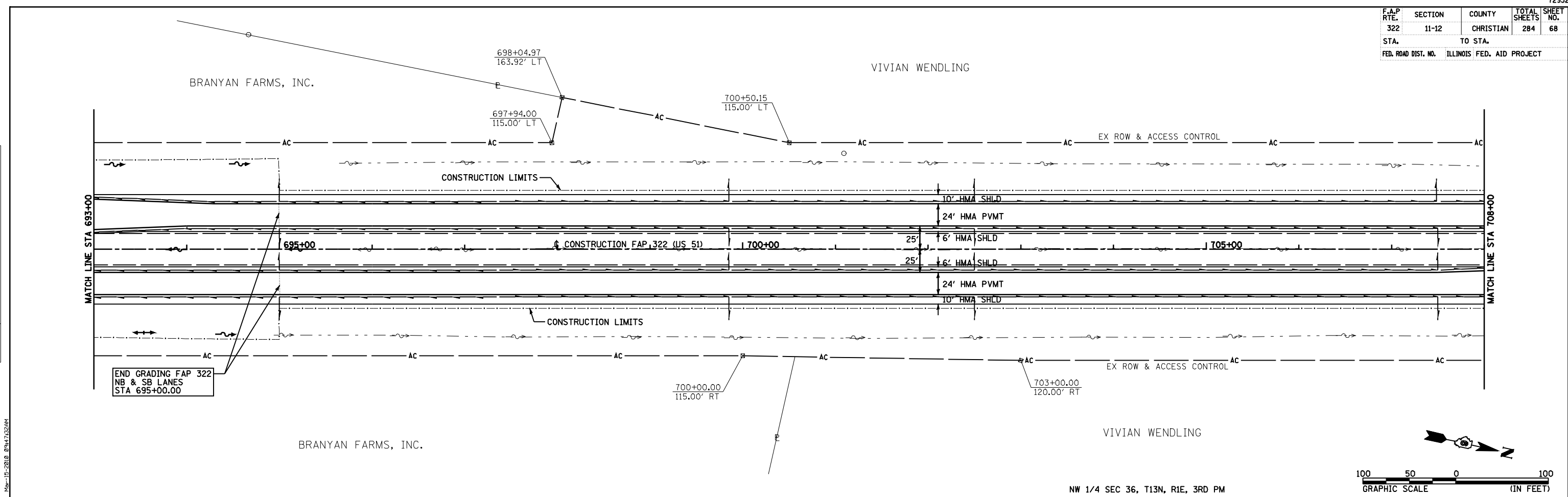


F.A.P. RTE.	SECTION	COUNTY	TOTAL SHEETS	SHEET NO.
322	11-12	CHRISTIAN	284	68
STA.	TO STA.			
FED. ROAD DIST. NO.	ILLINOIS FED. AID PROJECT			

PLAN	SURVEYED	DATE
NOTE BOOK NO.	ALIGNED CHECKED	
	BY	
	DATE	

PROFILE	SURVEYED	DATE
NOTE BOOK NO.	GRADES CHECKED	
	BY	
	DATE	



693+00	694+00	695+00	696+00	697+00	698+00	699+00	700+00	701+00	702+00	703+00	704+00	705+00	706+00	707+00	708+00
637.93	643.98	637.86	644.10	637.89	644.21	638.05	644.30	643.40	644.38	643.46	644.44	643.51	644.49	643.54	644.52
643.56	644.54	643.56	644.54	643.56	644.54	643.55	644.55	643.52	644.50	643.48	644.46	643.43	644.41	643.36	644.34
643.27	644.25	643.17	644.15	643.06	644.03	642.93	643.91	642.78	643.76	642.62	643.60	642.45	643.43	642.26	643.24
642.05	643.03	641.84	642.82	641.60	642.58	641.35	642.33	641.09	642.07	640.81	641.79	640.52	641.50	640.22	641.20

FAP 322 (US 51) STA 693+00 TO STA 708+00