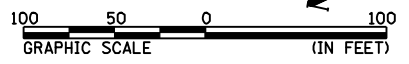
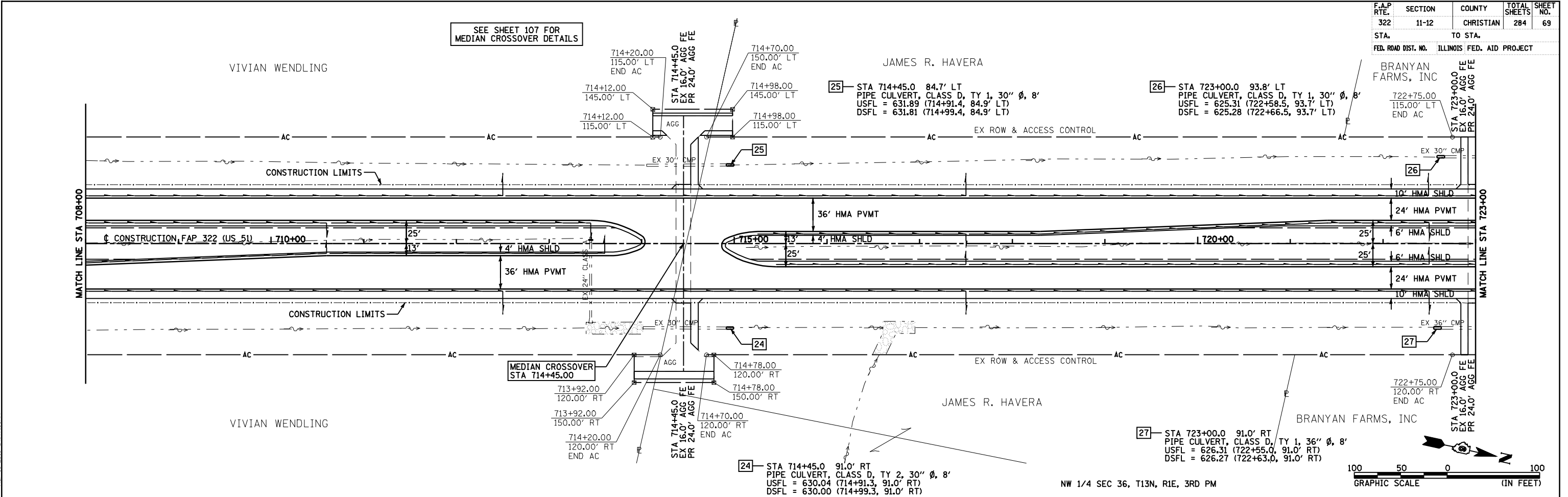


F.A.P. RTE. 322	SECTION 11-12	COUNTY CHRISTIAN	TOTAL SHEETS 284	SHEET NO. 69
STA.	TO STA.			
FED. ROAD DIST. NO.	ILLINOIS FED. AID PROJECT			

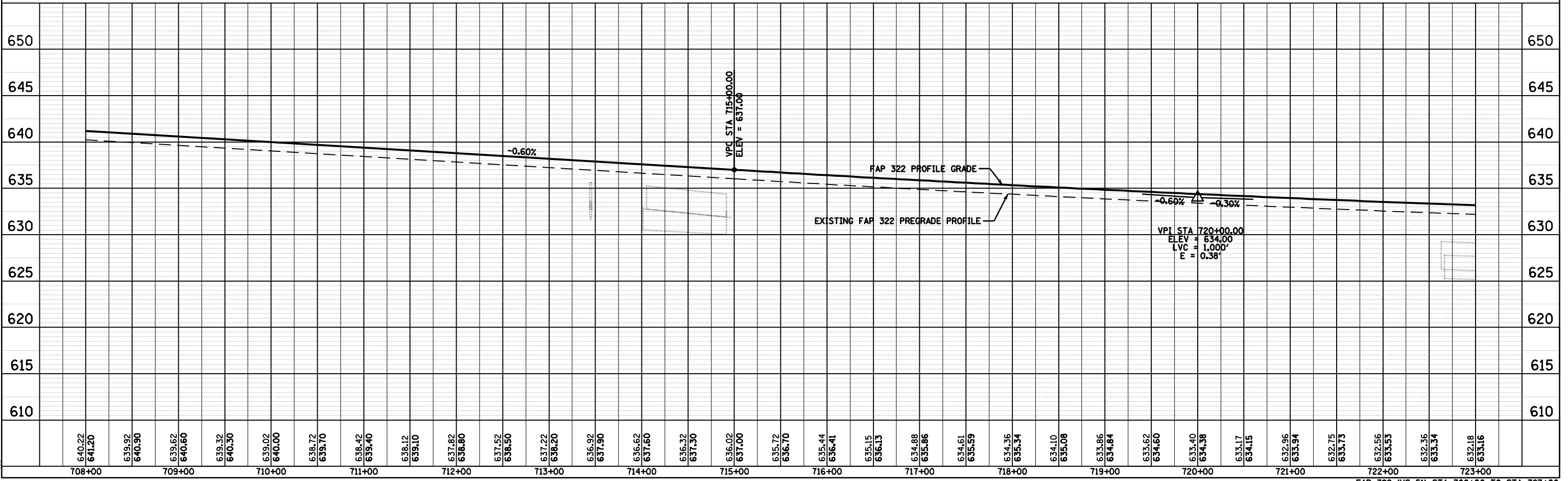
SEE SHEET 107 FOR MEDIAN CROSSOVER DETAILS



NW 1/4 SEC 36, T13N, R1E, 3RD PM

PLAN	SURVEYED	DATE
NOTE BOOK NO.	ALIGNED	
	CHECKED	
	BY	
	DATE	

PROFILE	SURVEYED	DATE
NOTE BOOK NO.	GRADES CHECKED	
	BY	
	DATE	



FAP 322 (US 51) STA 708+00 TO STA 723+00