

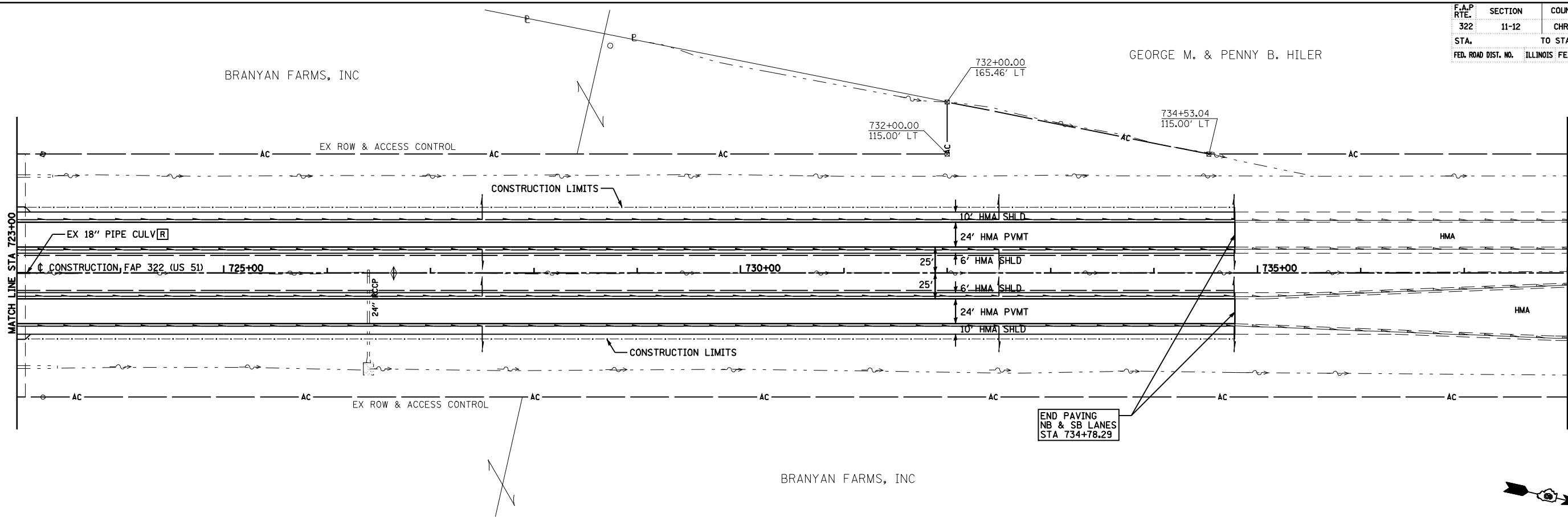
F.A.P. RTE.	SECTION	COUNTY	TOTAL SHEETS	SHEET NO.
322	11-12	CHRISTIAN	284	70
STA.	TO STA.			
FED. ROAD DIST. NO.	ILLINOIS FED. AID PROJECT			

BRANYAN FARMS, INC

GEORGE M. & PENNY B. HILER

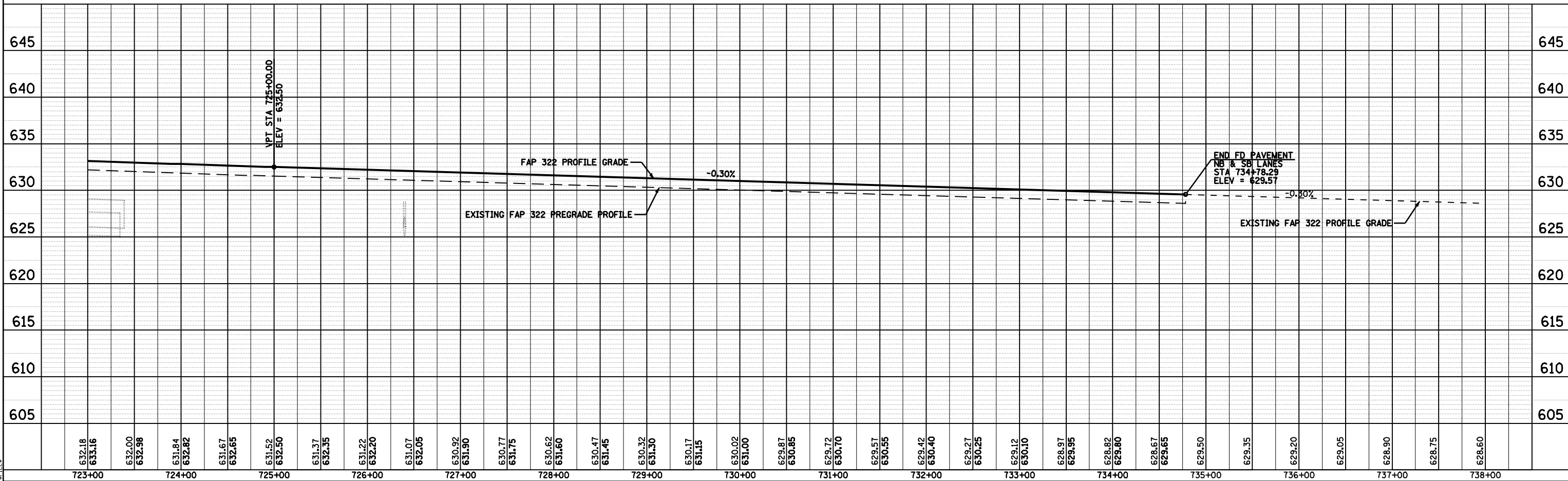
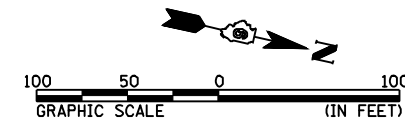
PLAN	DATE
BY	
REVISIONS	
NO.	
DATE	
BY	
REVISIONS	
NO.	
DATE	

PROFILE	DATE
BY	
REVISIONS	
NO.	
DATE	
BY	
REVISIONS	
NO.	
DATE	



BRANYAN FARMS, INC

NW 1/4 SEC 36, T13N, R1E, 3RD PM



FAP 322 (US 51) STA 723+00 TO STA 738+00

FILE#