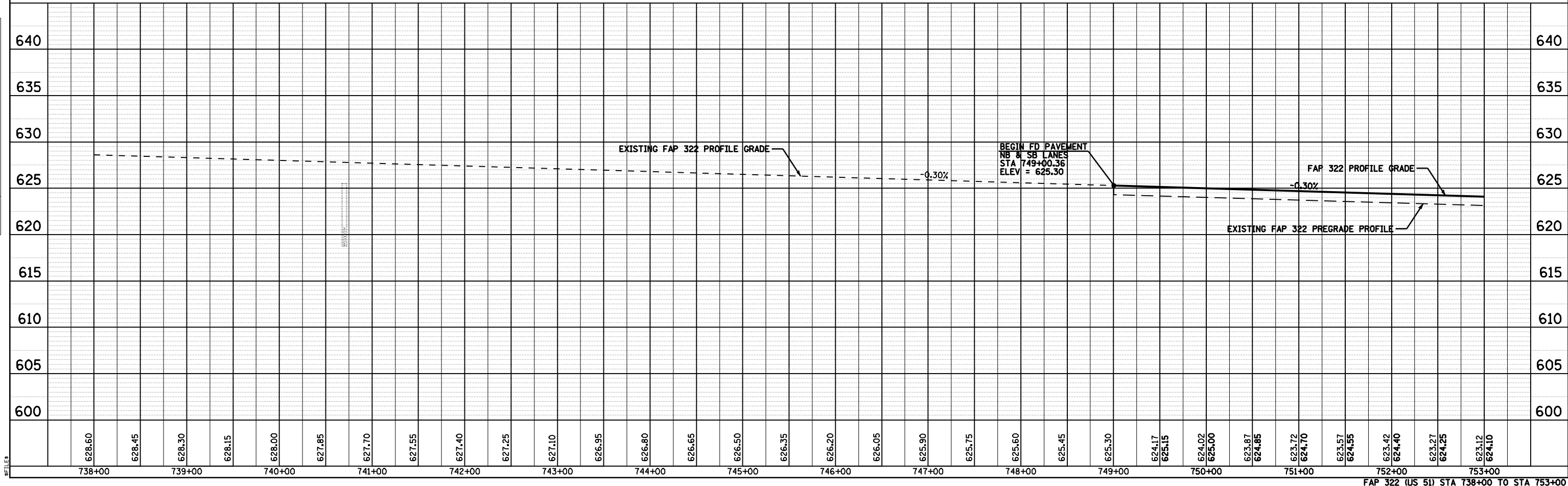
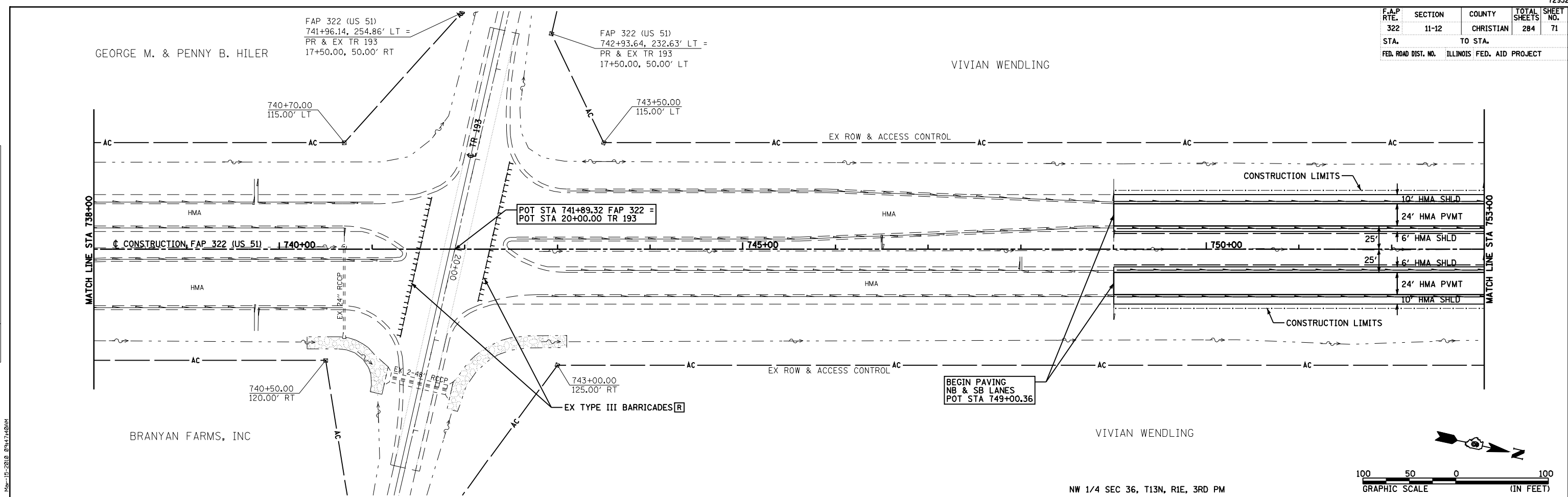


F.A.P. RTE.	SECTION	COUNTY	TOTAL SHEETS	SHEET NO.
322	11-12	CHRISTIAN	284	71
STA.	TO STA.			
FED. ROAD DIST. NO.	ILLINOIS FED. AID PROJECT			

PLAN	SURVEYED	DATE
NOTE BOOK NO.	ALIGNED CHECKED	
	BY: [NAME]	
	DATE	

PROFILE	SURVEYED	DATE
NOTE BOOK NO.	GRADES CHECKED	
	BY: [NAME]	
	DATE	



FAP 322 (US 51) STA 738+00 TO STA 753+00