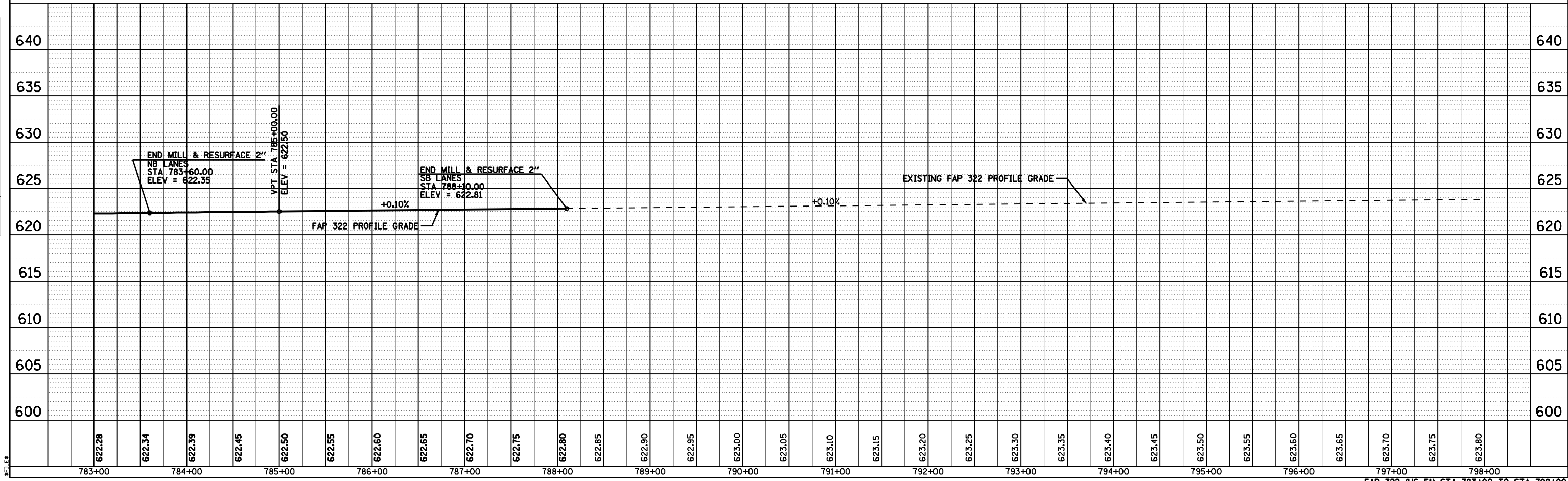
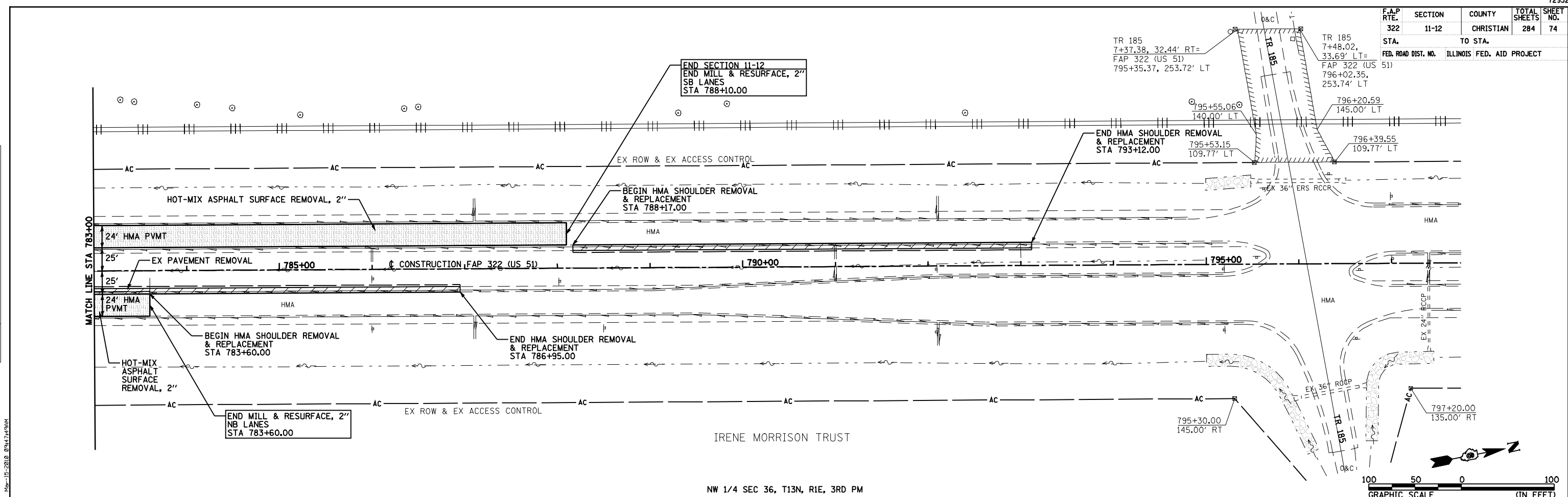


F.A.P. RTE.	SECTION	COUNTY	TOTAL SHEETS	SHEET NO.
322	11-12	CHRISTIAN	284	74
STA.	TO STA.			
FED. ROAD DIST. NO.	ILLINOIS FED. AID PROJECT			

DATE	BY
DATE	BY

DATE	BY
DATE	BY



FAP 322 (US 51) STA 783+00 TO STA 798+00

FILE#