

F.A.P. RTE.	SECTION	COUNTY	TOTAL SHEETS	SHEET NO.
322	11-12	CHRISTIAN	284	76
STA.		TO STA.		
FED. ROAD DIST. NO.		ILLINOIS FED. AID PROJECT		

**SB TRANSITION CURVE #1 DATA:**  
 PI STA = 202+21.83  
 = 559+71.85 49.15' LT FAP 322  
 $\Delta = 1^\circ 57' 19''$  (RT)  
 $D = 0^\circ 26' 27''$   
 $R = 13,000.00'$   
 $T = 221.83'$   
 $L = 443.61'$   
 $E = 1.89'$   
 $SE = NC$   
 PC STA = 200+00.00  
 = 557+50.02 49.11' LT FAP 322  
 PRC STA = 204+43.61  
 = 561+93.55 41.61' LT FAP 322

**SB TRANSITION CURVE #2 DATA:**  
 PI STA = 205+79.49  
 = 563+29.34 37.00' LT FAP 322  
 $\Delta = 1^\circ 56' 46''$  (LT)  
 $D = 0^\circ 42' 58''$   
 $R = 8,000.00'$   
 $T = 135.88'$   
 $L = 271.73'$   
 $E = 1.15'$   
 $SE = RC$   
 PRC STA = 204+43.61  
 = 561+93.55 41.61' LT FAP 322  
 PT STA = 207+15.34  
 = 564+65.22 37.00' LT FAP 322

**CROSSOVER "A" CURVE #2 DATA:**  
 PI STA = 112+81.06  
 = 563+77.51 37.00' RT FAP 322  
 $\Delta = 5^\circ 30' 49''$  (LT)  
 $D = 0^\circ 42' 58''$   
 $R = 8,000.00'$   
 $T = 385.22'$   
 $L = 769.84'$   
 $E = 9.27'$   
 $SE = NC$   
 PC STA = 108+95.84  
 = 559+94.08 0.01' LT FAP 322  
 PT STA = 116+65.68  
 = 567+62.73 37.00' RT FAP 322

**CROSSOVER "A" CURVE #1 DATA:**  
 PI STA = 103+85.86  
 = 554+85.86 49.07' LT FAP 322  
 $\Delta = 5^\circ 31' 22''$  (RT)  
 $D = 0^\circ 42' 58''$   
 $R = 8,000.00'$   
 $T = 385.86'$   
 $L = 771.12'$   
 $E = 9.30'$   
 $SE = NC$   
 PC STA = 100+00.00  
 = 551+00.00 49.01' LT FAP 322  
 PT STA = 107+71.12  
 = 558+69.93 12.00' LT FAP 322

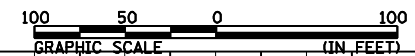
**CROSSOVER "A" SE DATA:**  
 TRANSITION SE:  
 STA 107+72 (-1.5%) TO STA 108+95 (+1.5%)

END SB TRANSITION  
 POT STA 207+16.12 SB TRANSITION =  
 POT STA 564+66.00 37.00' LT FAP 322

END CROSSOVER "A"  
 POT STA 116+65.95 CROSSOVER "A" =  
 POT STA 567+63.00 37.00' RT FAP 322

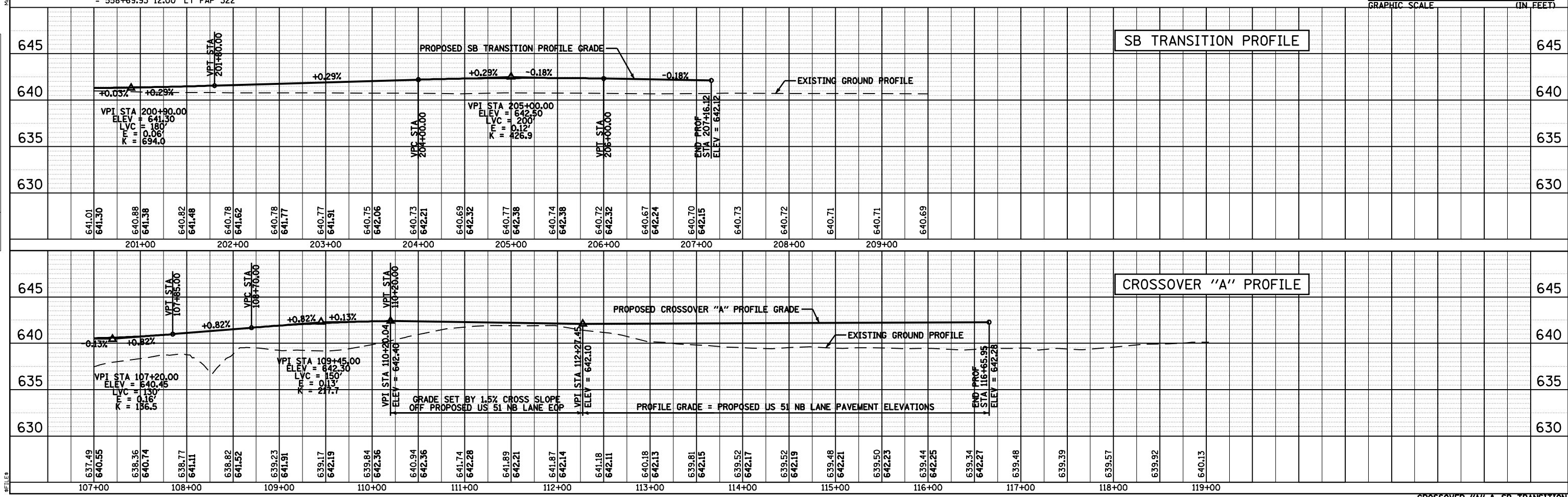
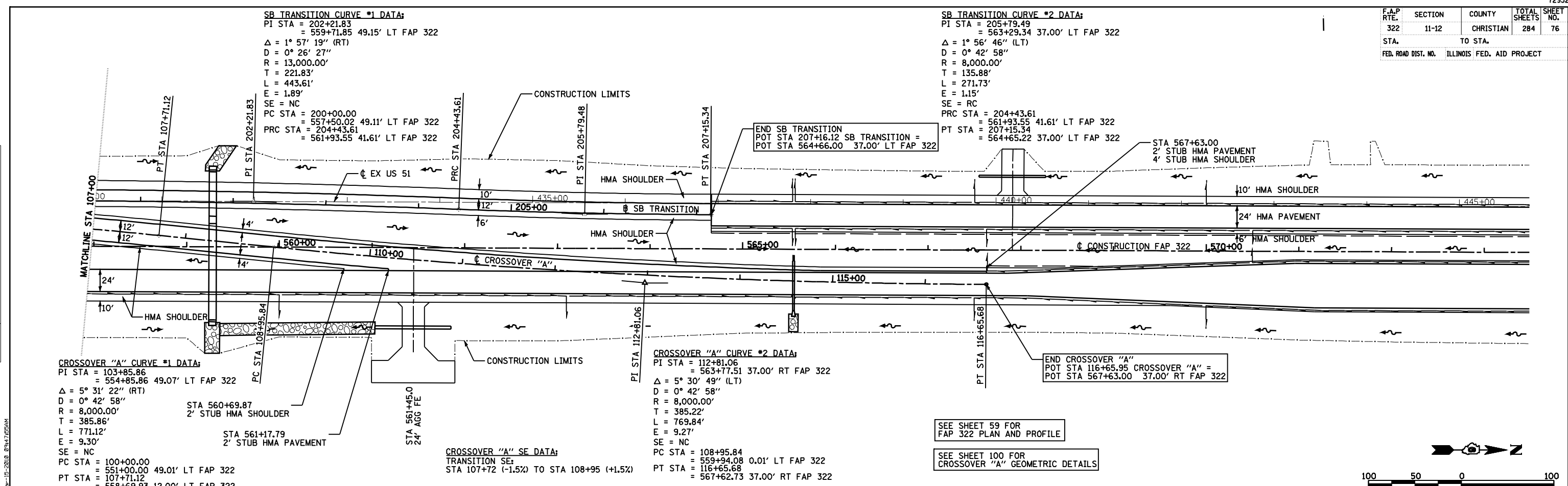
SEE SHEET 59 FOR  
 FAP 322 PLAN AND PROFILE

SEE SHEET 100 FOR  
 CROSSOVER "A" GEOMETRIC DETAILS



DATE	BY

DATE	BY



CROSSOVER "A" & SB TRANSITION