

SE 1/4 SEC 11, T12N, R1E, 3RD PM

SW 1/4 SEC 12, T12N, R1E, 3RD PM

F.A.P. RTE.	SECTION	COUNTY	TOTAL SHEETS	SHEET NO.
322	11-12	CHRISTIAN	284	79
STA.		TO STA.		
FED. ROAD DIST. NO.		ILLINOIS FED. AID PROJECT		

PRIVATE DRIVE 595 CURVE #1 DATA
 PI STA = 17+84.72 (594+50.85 196.08' LT)
 $\Delta = 49^\circ 11' 11''$ (LT)
 $D = 81^\circ 51' 04''$
 $R = 70.00'$
 $T = 32.04'$
 $L = 60.09'$
 $E = 6.98'$
 $SE = NONE$
 PC STA = 17+52.68 (594+48.14 228.00 LT)
 PRC STA = 18+12.77 (594+75.83 177.46' LT)

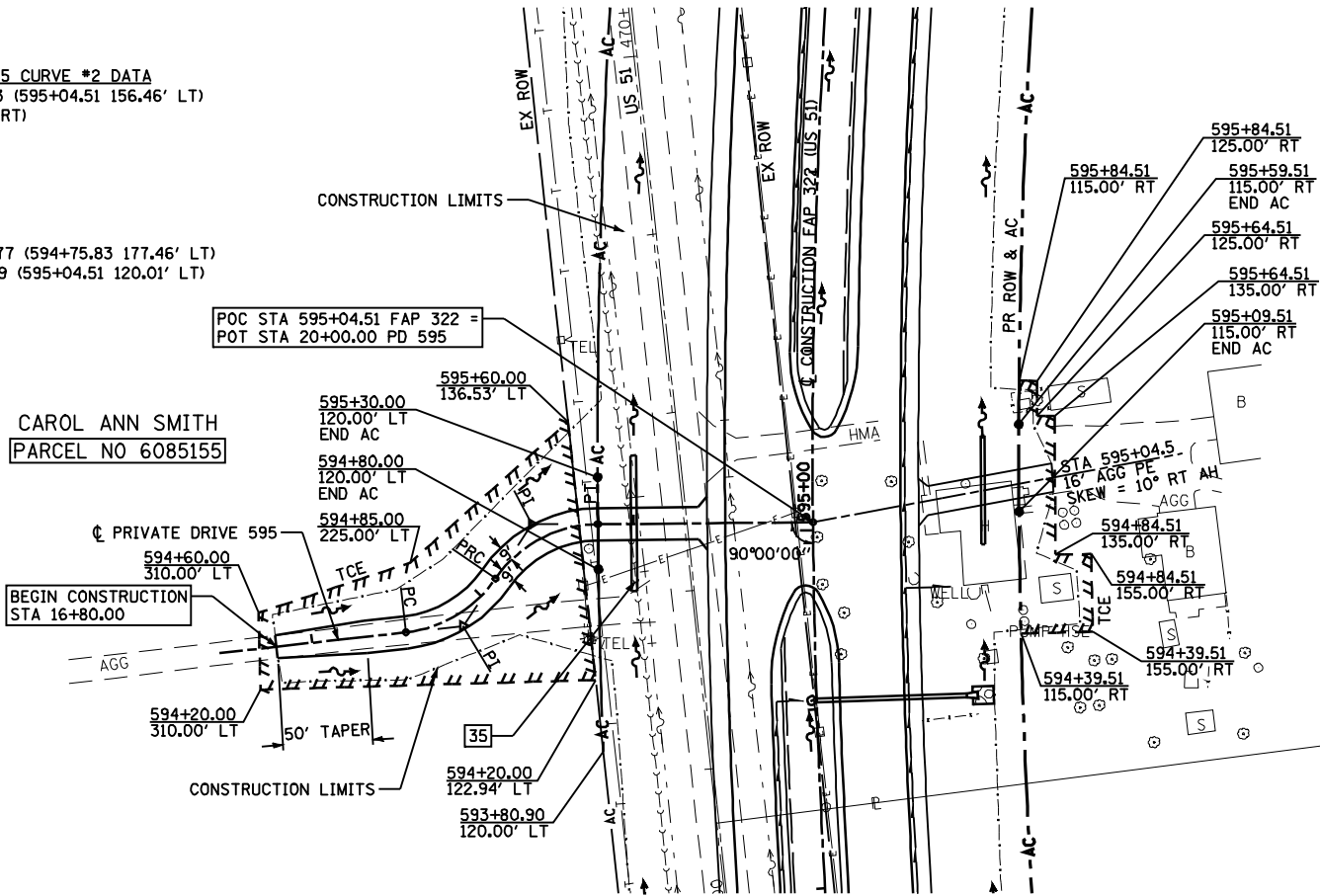
PRIVATE DRIVE 595 CURVE #2 DATA
 PI STA = 18+49.23 (595+04.51 156.46' LT)
 $\Delta = 55^\circ 00' 55''$ (RT)
 $D = 81^\circ 51' 04''$
 $R = 70.00'$
 $T = 36.45'$
 $L = 67.21'$
 $E = 8.92'$
 $SE = NONE$
 PRC STA = 18+12.77 (594+75.83 177.46' LT)
 PT STA = 18+79.99 (595+04.51 120.01' LT)

35 - STA 19+00.2
 PIPE CULVERT, CLASS D, TY 2, 24" ϕ , 76'
 USFL = 639.29 (37.7' RT)
 DSFL = 639.07 (38.3' LT)

CAROL ANN SMITH
 PARCEL NO 6085155

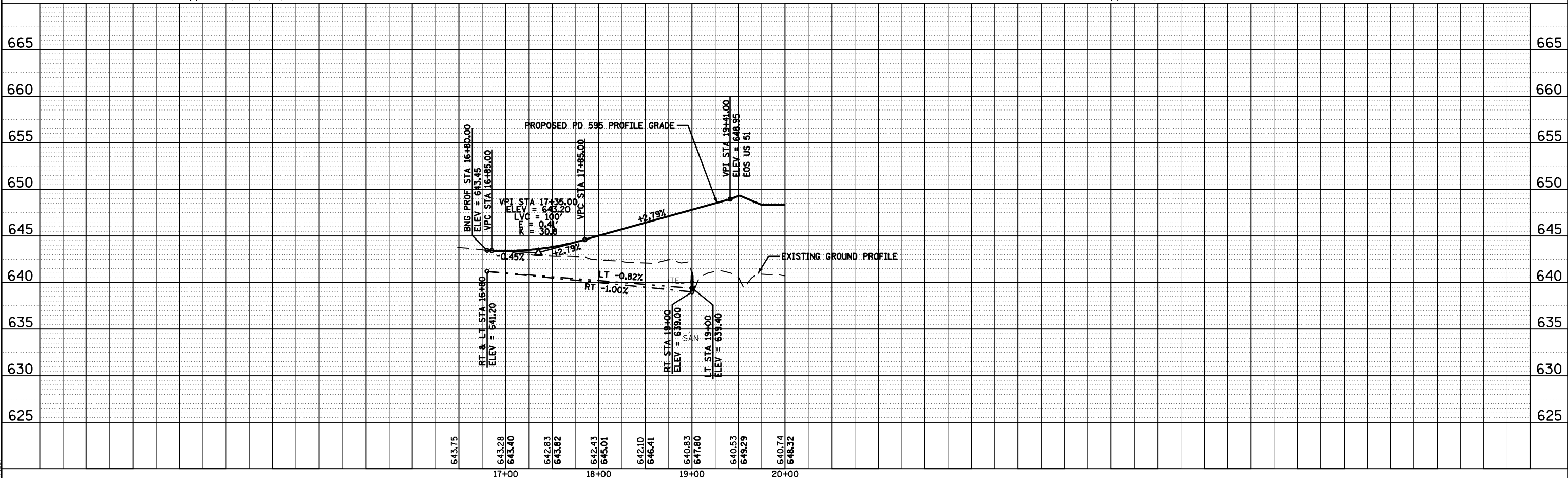
LELAH ROSE HEBERT
 PARCEL NO 6085152

KENNETH R. & ELEANOR DORR
 PARCEL NO 6085154



SE 1/4 SEC 11, T12N, R1E, 3RD PM

SW 1/4 SEC 12, T12N, R1E, 3RD PM



PRIVATE DRIVE 595 STA 16+80 TO STA 20+00

PLAN
 SURVEYED
 ALIGNED
 CHECKED
 DATE

PROFILE
 SURVEYED
 GRADES CHECKED
 DATE

Ms-15-2018 014480-14H

\$FILE\$