

STATE OF ILLINOIS  
DEPARTMENT OF TRANSPORTATION

F.A.P. RTE.	SECTION	COUNTY	TOTAL SHEETS	SHEET NO.
322	11-12	CHRISTIAN	284	91
STA. TO STA.		FED. ROAD DIST. NO. ILLINOIS FED. AID PROJECT		

NW 1/4 SEC 12, T12N, R1E, 3RD PM

SW 1/4 SEC 1, T12N, R1E, 3RD PM

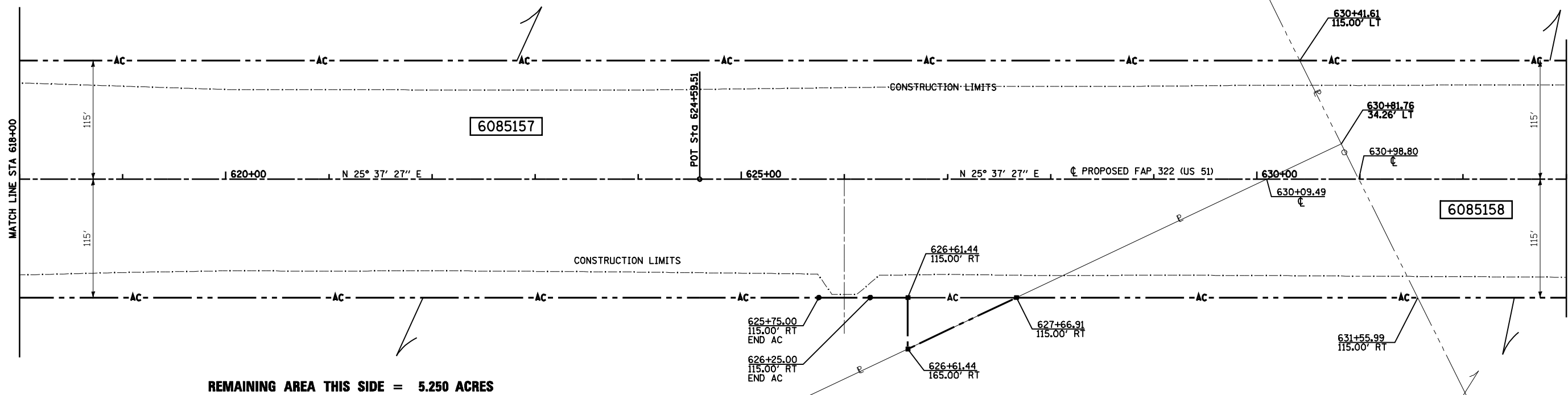
PARCEL NO 6085157  
PAUL H. YOUNG, JR.

PARCEL NO 6085158  
L. WILLIAM CORZINE, CARL C. CORZINE,  
AND ROBERT D. CORZINE AS TRUSTEES  
SEE TABULATIONS ON SHEET 7

TOTAL AREA = 38.840 ACRES  
REQUIRED ROW AREA = 9.153 ACRES  
EXISTING ROW AREA = 0.000 ACRES  
TOTAL ROW AREA = 9.153 ACRES  
REMAINING AREA = 29.687 ACRES

REMAINING AREA THIS SIDE = 24.437 ACRES

REMAINING AREA THIS SIDE = 87.620 ACRES



REMAINING AREA THIS SIDE = 5.250 ACRES

REMAINING AREA THIS SIDE = 106.735 ACRES

PARCEL NO 6085158  
L. WILLIAM CORZINE, CARL C. CORZINE,  
AND ROBERT D. CORZINE AS TRUSTEES  
SEE TABULATIONS ON SHEET 7

NW 1/4 SEC 12, T12N, R1E, 3RD PM

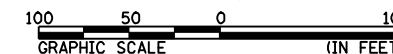
NOTES:  
BEARINGS ARE BASED ON THE ILLINOIS STATE PLANE  
COORDINATE SYSTEM, NAD83 1986 - WEST ZONE  
SURVEYED IN ENGLISH.

PLAT DISTANCES AND STATIONING ARE IN GRID ENGLISH.  
TO CONVERT TO GROUND DIVIDE BY GRID FACTOR.  
GRID FACTOR = 1.00003150

RIGHT OF WAY PLANS

ROUTE F.A.P. 322 (US 51)  
SECTION 11-1  
PROJECT  
COUNTY CHRISTIAN  
JOB NO. R-96-008-95  
STA 518+00 TO STA 633+00  
SCALE 1 = 50'

SHEET NO. 6 OF 14



3448356 AM

Map-15-2010 09448356 AM

8 FILES