

STATE OF ILLINOIS  
DEPARTMENT OF TRANSPORTATION

NW 1/4 SEC 1, T12N, R1E, 3RD PM

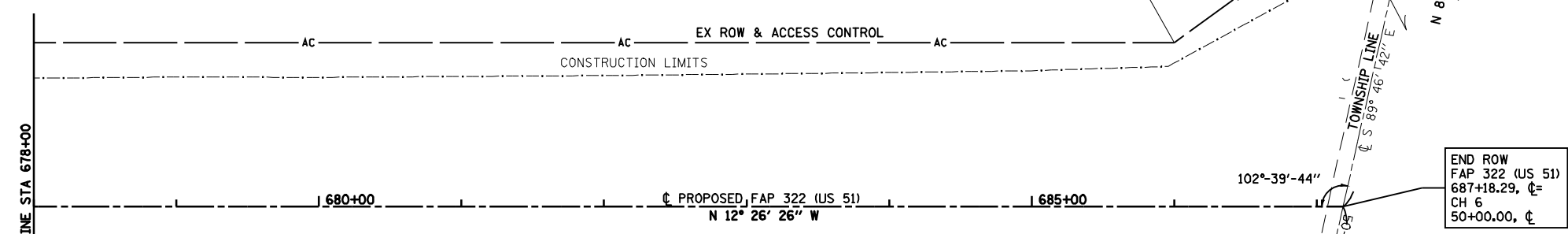
F.A.P. RTE.	SECTION	COUNTY	TOTAL SHEETS	SHEET NO.
322	11-12	CHRISTIAN	284	95
STA.		TO STA.		
FED. ROAD DIST. NO.		ILLINOIS	FED. AID PROJECT	

BRANYAN FARMS, INC.  
6085166  
(CONTRACT 1)

FAP 322 (US 51)  
687+23.11, 203.90' LT=  
CH 6  
48+00.00, 40.00' RT

S 89° 53' 37" E  
29.40'

SET #4  
REBAR  
SW CORNER  
SEC 36



6085165A

PR ROW & ACCESS CONTROL  
679+70.31  
115.00' RT

PARCEL NO 6085165A & B  
CAROLYN G. CORZINE  
BETTY J. GABRIEL

TOTAL AREA = 180.753 ACRES  
REQUIRED ROW AREA  
TRACT A = 1.171 ACRES  
TRACT B = 0.089 ACRES  
EXISTING ROW AREA = 0.093 ACRES  
TOTAL ROW AREA = 1.353 ACRES  
REMAINING AREA = 179.400 ACRES

NW 1/4 SEC 1, T12N, R1E, 3RD PM

NOTES:  
BEARINGS ARE BASED ON THE ILLINOIS STATE PLANE  
COORDINATE SYSTEM, NAD83 1986 - WEST ZONE  
SURVEYED IN ENGLISH.

PLAT DISTANCES AND STATIONING ARE IN GRID ENGLISH.  
TO CONVERT TO GROUND DIVIDE BY GRID FACTOR.  
GRID FACTOR = 1.00003150

SET #4 REBAR  
NE CORNER  
NW 1/4  
SEC 1  
8.12'

FOUND #4 REBAR OVER PIPE  
SE CORNER  
SW 1/4  
SEC 36

FAP 322 (US 51)  
686+24.46, 235.15' RT=  
CH 6  
52+50.00, 40.00' RT

52+78.75  
40.00' RT

52+78.83  
20.00' RT

52+78.90  
0.60' RT

6085165B

53+45.00  
40.00' RT  
END AC

54+60.00  
40.00' RT

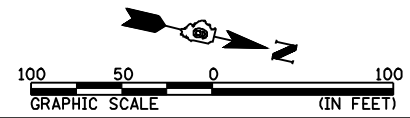
54+85.00  
20.00' RT

54+85.00  
0.19' RT

**RIGHT OF WAY PLANS**

ROUTE F.A.P. 322 (US 51)  
SECTION 11-1  
PROJECT  
COUNTY CHRISTIAN  
JOB NO. R-96-008-95  
STA 678+00 TO STA 687+18.29  
SCALE 1 = 50'

SHEET NO. 10 OF 14



344847.dwg

Map-15-2010 09/14/14/17.dwg

8/FILES