

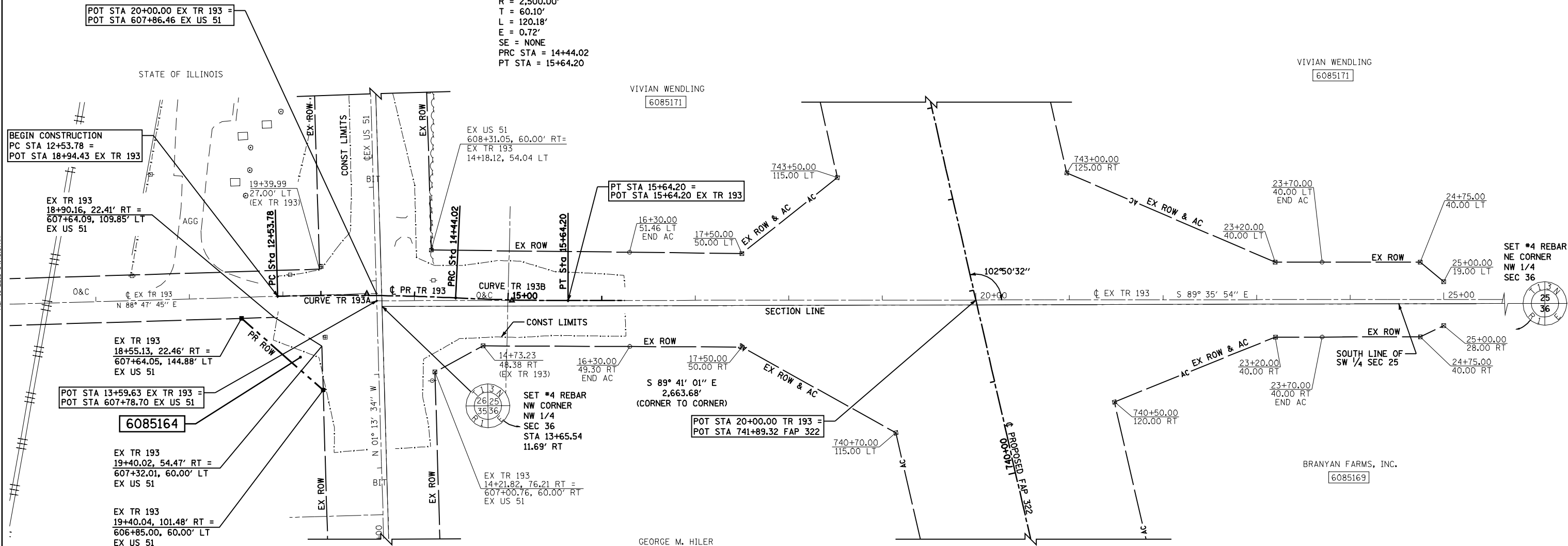
STATE OF ILLINOIS
DEPARTMENT OF TRANSPORTATION

F.A.P. RTE.	SECTION	COUNTY	TOTAL SHEETS	SHEET NO.
322	11-12	CHRISTIAN	284	99
STA.		TO STA.		
FED. ROAD DIST. NO.	ILLINOIS	FED. AID PROJECT		

SW 1/4 SEC 25, T13N, R1E, 3RD PM

SW 1/4 SEC 25, T13N, R1E, 3RD PM

PR TR 193B CURVE DATA:
 PI STA = 15+04.12
 $\Delta = 2^\circ 45' 15''$ (LT)
 $D = 2^\circ 17' 31''$
 $R = 2,500.00'$
 $T = 60.10'$
 $L = 120.18'$
 $E = 0.72'$
 $SE = NONE$
 PRC STA = 14+44.02
 PT STA = 15+64.20



BEGIN CONSTRUCTION
 PC STA 12+53.78 =
 POT STA 18+94.43 EX TR 193

POT STA 20+00.00 EX TR 193 =
 POT STA 607+86.46 EX US 51

PT STA 15+64.20 =
 POT STA 15+64.20 EX TR 193

POT STA 13+59.63 EX TR 193 =
 POT STA 607+78.70 EX US 51

6085164

POT STA 20+00.00 TR 193 =
 POT STA 741+89.32 FAP 322

PARCEL NO 6085164
 HILER FARMS, INC
 TOTAL AREA = 30.431 ACRES
 REQUIRED ROW AREA = 0.059 ACRES
 EXISTING ROW AREA = 0.000 ACRES
 TOTAL ROW AREA = 0.059 ACRES
 REMAINING AREA = 30.372 ACRES

PR TR 193A CURVE DATA:
 PI STA = 13+48.95
 $\Delta = 4^\circ 21' 36''$ (RT)
 $D = 2^\circ 17' 31''$
 $R = 2,500.00'$
 $T = 95.17'$
 $L = 190.24'$
 $E = 1.81'$
 $SE = NONE$
 PC STA = 12+53.78
 PRC STA = 14+44.02

NW 1/4 SEC 36, T13N, R1E, 3RD PM

NW 1/4 SEC 36, T13N, R1E, 3RD PM

RIGHT OF WAY PLANS

ROUTE F.A.P. 322 (US 51)
 SECTION 11-1
 PROJECT
 COUNTY CHRISTIAN
 JOB NO. R-96-008-95
 STA 18+60.00 TO STA 19+40.00
 SCALE 1 = 50'

