

POINT	FAP 322 (US 51)		TR 229A		ELEVATION
	STATION	OFFSET	STATION	OFFSET	
A1	573+67.94	49.00 LT	19+45.74	113.69 RT	644.06
A2	573+82.02	49.57 LT	19+45.82	99.59 RT	644.10
A3	573+96.01	51.27 LT	19+44.76	85.54 RT	644.12
A4	574+09.81	54.08 LT	19+42.58	71.62 RT	644.12
A5	574+23.35	58.00 LT	19+39.28	57.92 RT	644.08
A6	574+36.53	63.00 LT	19+34.89	44.53 RT	643.97
A7	574+47.01	69.06 LT	19+29.32	33.78 RT	643.84
A8	574+55.72	77.46 LT	19+21.33	24.69 RT	643.71
A9	574+62.17	87.70 LT	19+11.39	17.79 RT	643.57
A10	574+65.96	99.20 LT	19+00.08	13.47 RT	643.43
A11	574+66.88	111.27 LT	18+88.07	12.00 RT	643.29

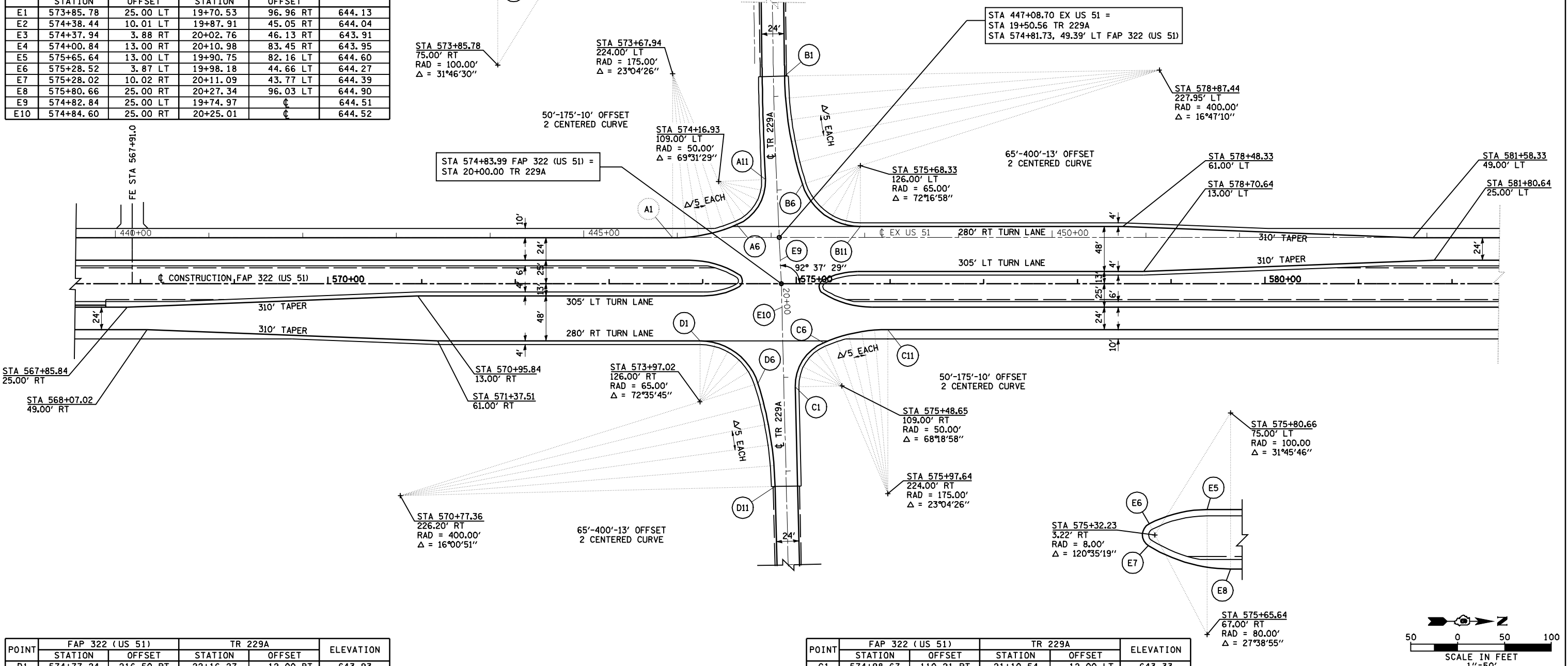
POINT	FAP 322 (US 51)		TR 229A		ELEVATION
	STATION	OFFSET	STATION	OFFSET	
E1	573+85.78	25.00 LT	19+70.53	96.96 RT	644.13
E2	574+38.44	10.01 LT	19+87.91	45.05 RT	644.04
E3	574+37.94	3.88 RT	20+02.76	46.13 RT	643.91
E4	574+00.84	13.00 RT	20+10.98	83.45 RT	643.95
E5	575+65.64	13.00 LT	19+90.75	82.16 LT	644.60
E6	575+28.52	3.87 LT	19+98.18	44.66 LT	644.27
E7	575+28.02	10.02 RT	20+11.09	43.77 LT	644.39
E8	575+80.66	25.00 RT	20+27.34	96.03 LT	644.90
E9	574+82.84	25.00 LT	19+74.97	∅	644.51
E10	574+84.60	25.00 RT	20+25.01	∅	644.52

POINT	FAP 322 (US 51)		TR 229A		ELEVATION
	STATION	OFFSET	STATION	OFFSET	
D1	574+77.24	216.50 RT	22+16.27	12.00 RT	643.93
D2	574+76.07	194.17 RT	21+93.92	12.63 RT	643.96
D3	574+73.66	171.95 RT	21+71.64	14.50 RT	643.90
D4	574+70.01	149.89 RT	21+49.50	17.61 RT	643.75
D5	574+65.13	128.07 RT	21+27.57	21.96 RT	643.54
D6	574+59.05	106.56 RT	21+05.92	27.52 RT	643.31
D7	574+52.19	91.63 RT	20+90.83	34.01 RT	643.09
D8	574+41.81	78.90 RT	20+77.85	44.08 RT	642.92
D9	574+28.57	69.17 RT	20+67.81	57.08 RT	642.81
D10	574+13.32	63.08 RT	20+61.34	72.18 RT	642.75
D11	573+97.02	61.00 RT	20+58.87	88.42 RT	642.71

POINT	FAP 322 (US 51)		TR 229A		ELEVATION
	STATION	OFFSET	STATION	OFFSET	
B1	574+87.49	221.45 LT	17+78.57	12.00 LT	642.52
B2	574+88.56	198.04 LT	18+02.08	12.61 LT	642.61
B3	574+91.00	174.73 LT	18+25.52	14.45 LT	642.70
B4	574+94.79	151.61 LT	18+48.86	17.51 LT	642.82
B5	574+99.94	128.74 LT	18+72.02	21.78 LT	643.02
B6	575+06.41	106.22 LT	18+94.92	27.26 LT	643.30
B7	575+13.31	91.39 LT	19+10.05	33.47 LT	643.62
B8	575+23.69	78.75 LT	19+23.15	43.27 LT	644.00
B9	575+36.90	69.10 LT	19+33.39	56.02 LT	644.33
B10	575+52.10	63.06 LT	19+40.13	70.93 LT	644.51
B11	575+68.33	61.00 LT	19+42.93	87.04 LT	644.61

POINT	FAP 322 (US 51)		TR 229A		ELEVATION
	STATION	OFFSET	STATION	OFFSET	
C1	574+98.67	110.21 RT	21+10.54	12.00 LT	643.33
C2	574+99.80	98.37 RT	20+98.73	13.42 LT	643.45
C3	575+03.69	87.13 RT	20+87.58	17.58 LT	643.57
C4	575+10.13	77.13 RT	20+77.74	24.26 LT	643.74
C5	575+18.75	68.93 RT	20+69.75	33.07 LT	643.95
C6	575+29.06	63.00 RT	20+64.07	43.53 LT	644.19
C7	575+42.23	58.00 RT	20+59.40	56.82 LT	644.43
C8	575+55.77	54.08 RT	20+55.81	70.45 LT	644.62
C9	575+69.58	51.27 RT	20+53.33	84.32 LT	644.79
C10	575+83.56	49.57 RT	20+51.97	98.34 LT	644.90
C11	575+97.64	49.00 RT	20+51.74	112.43 LT	644.97

F.A.P. RTE.	SECTION	COUNTY	TOTAL SHEETS	SHEET NO.
322	11-12	CHRISTIAN	284	101
STA.		TO STA.		
FED. ROAD DIST. NO.		ILLINOIS FED. AID PROJECT		



NOTES:  
 ALL STATIONS, OFFSETS, AND ELEVATIONS SHOWN ARE FOR FINAL PAVING.  
 SEE SHEETS 60 & 77 FOR PLAN AND PROFILES.

REVISIONS	
NAME	DATE

ILLINOIS DEPARTMENT OF TRANSPORTATION  
 GEOMETRIC DETAILS  
 TR 229A  
 FAP 322 (US 51)  
 SECTION 11-12  
 CHRISTIAN COUNTY

SCALE: 1"=50'  
 DATE: 8/22/06  
 DRAWN BY: B.G.J.  
 CHECKED BY: T.L.D.

