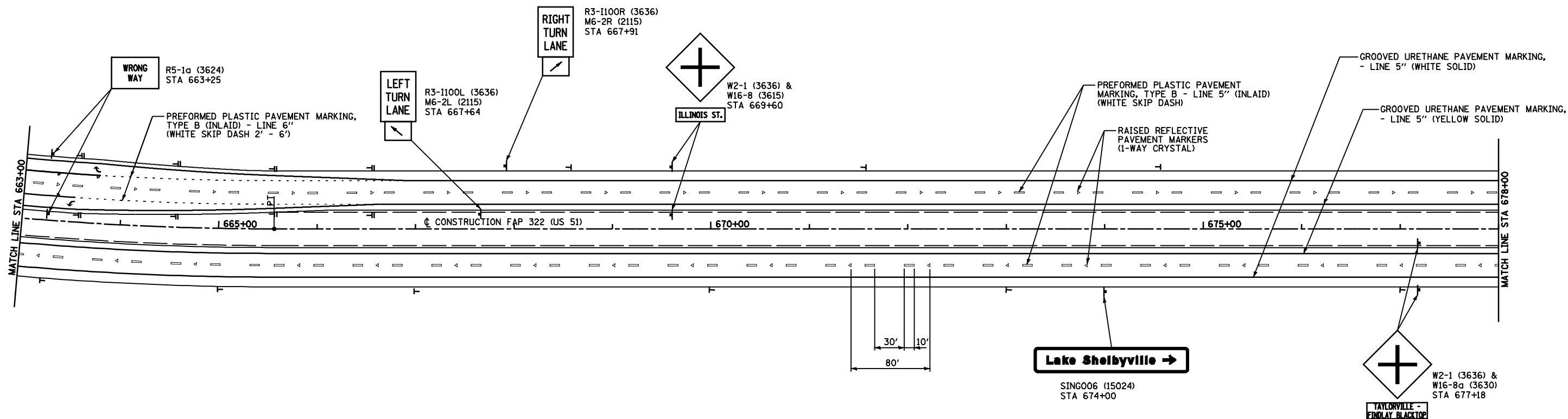


F.A.P. RTE.	SECTION	COUNTY	TOTAL SHEETS	SHEET NO.
322	11-12	CHRISTIAN	284	120
STA.		TO STA.		
FED. ROAD DIST. NO.	ILLINOIS	FED. AID PROJECT		

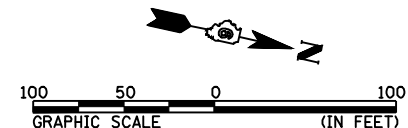
FAP 322 (US 51) CURVE *M2 DATA:
 PI STA = 655+98.31
 $\Delta = 38^\circ 03' 53''$ (LT)
 D = 1° 54' 35"
 R = 3,000.00'
 T = 1,034.88'
 L = 1,993.07'
 E = 173.48'
 SE = 5.3%
 PC STA = 645+63.43
 PT STA = 665+56.50
 SE ATTAINED STA 644+65 TO STA 647+43
 (TR STA 644+65 TO STA 645+04)
 SE REMOVED STA 664+77 TO STA 667+55
 (TR STA 667+16 TO STA 667+55)



Ms-15-2018 12/28/07PH

SFILE4

Lake Shelbyville →
 SING006 (15024)
 STA 674+00



DELINEATOR SYMBOLS:
 I - SINGLE
 II - DOUBLE

REVISIONS	
NAME	DATE

ILLINOIS DEPARTMENT OF TRANSPORTATION
 SIGNING & STRIPING PLAN
 STA 663+00 TO STA 678+00
 FAP 322 (US 51)
 SECTION 11-12
 CHRISTIAN COUNTY
 SCALE: 1"=50'
 DATE: 8/22/06
 DRAWN BY: BGJ
 CHECKED BY: SEB